

For Research Use Only

# CoraLite®594-conjugated Vimentin Polyclonal antibody



Catalog Number:CL594-10366

Featured Product

## Basic Information

Catalog Number:

CL594-10366

Size:

1000 µg/ml

Source:

Rabbit

Isotype:

IgG

Immunogen Catalog Number:

AG0489

GenBank Accession Number:

BC000163

GeneID (NCBI):

7431

Full Name:

vimentin

Calculated MW:

466 aa, 54 kDa

Observed MW:

54 kDa

Purification Method:

Antigen affinity purification

Recommended Dilutions:

IF 1:300-1:1200

Excitation/Emission maxima  
wavelengths:

593 nm/614 nm

## Applications

Tested Applications:

IF

Species Specificity:

human, mouse, rat

Positive Controls:

IF : HepG2 cells,

## Background Information

Vimentin, also named as VIM, belongs to the intermediate filament family. Vimentin is class-III intermediate filaments found in various non-epithelial cells, especially mesenchymal cells. Vimentin is important for stabilizing the architecture of the cytoplasm. Monocyte-derived macrophages secrete vimentin into the extracellular space in vitro. Secretion of vimentin was enhanced by the proinflammatory cytokine tumor necrosis factor-alpha (TNFA; 191160) and inhibited by the antiinflammatory cytokine IL10 (124092), suggesting that vimentin is involved in the immune response. Vimentin has specialized functions that contribute to specific dynamic cellular processes. As a phosphoprotein, 55-60 kDa of vimentin proteins can be observed due to the different phosphorylation level. Isoforms of vimentin (49 kDa and 60 kDa) had also been reported. (PMID: 8640945, 22728585).

## Storage

Storage:

Store at -20°C. Avoid exposure to light.

Storage Buffer:

PBS with 50% Glycerol, 0.05% Proclin300, 0.5% BSA, pH 7.3.

Aliquoting is unnecessary for -20°C storage

For technical support and original validation data for this product please contact:

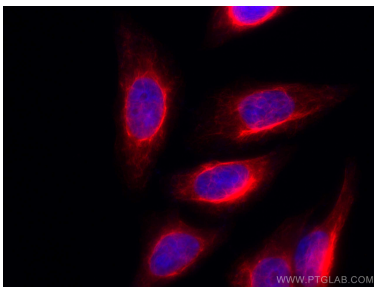
T: 4006900926

E: Proteintech-CN@ptglab.com

W: ptgcn.com

This product is exclusively available under Proteintech Group brand and is not available to purchase from any other manufacturer.

## Selected Validation Data



Immunofluorescent analysis of (-20°C Methanol) fixed HepG2 cells using CoraLite®594 Vimentin antibody (CL594-10366) at dilution of 1:600. DAPI (blue).