

For Research Use Only

CoraLite®594-conjugated TOM20 Polyclonal antibody



Catalog Number:CL594-11802

Featured Product

Basic Information

Catalog Number:

CL594-11802

Size:

1000 µg/ml

Source:

Rabbit

Isotype:

IgG

Immunogen Catalog Number:

AG2378

GenBank Accession Number:

BC000882

GeneID (NCBI):

9804

Full Name:

translocase of outer mitochondrial
membrane 20 homolog (yeast)

Calculated MW:

145 aa, 16 kDa

Observed MW:

16 kDa

Purification Method:

Antigen affinity purification

Recommended Dilutions:

IF 1:50-1:500

Excitation/Emission maxima
wavelengths:

593 nm/614 nm

Applications

Tested Applications:

FC (Intra), IF

Species Specificity:

human, mouse, rat

Positive Controls:

IF : HUVEC cells,

Background Information

TOM20, also named as KIAA0016, belongs to the Tom20 family. It is a central component of the receptor complex responsible for the recognition and translocation of cytosolically synthesized mitochondrial preproteins. Together with TOM22, TOM20 functions as the transit peptide receptor at the surface of the mitochondrion outer membrane and facilitates the movement of preproteins into the TOM40 translocation pore. TOM20 is characterized as major docking receptors to mediate the recognition by different mechanisms.

Storage

Storage:

Store at -20°C. Avoid exposure to light.

Storage Buffer:

PBS with 50% Glycerol, 0.05% Proclin300, 0.5% BSA, pH 7.3.

Aliquoting is unnecessary for -20°C storage

For technical support and original validation data for this product please contact:

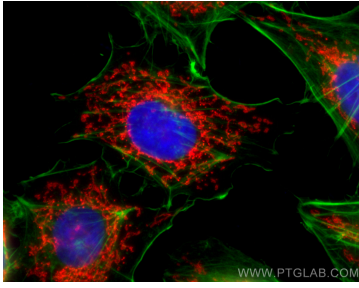
T: 4006900926

E: Proteintech-CN@ptglab.com

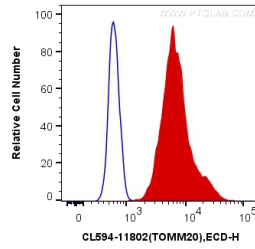
W: ptgcn.com

This product is exclusively available under Proteintech Group brand and is not available to purchase from any other manufacturer.

Selected Validation Data



Immunofluorescent analysis of (4% PFA) fixed HUVEC cells using CoraLite®594 TOM20 antibody (CL594-11802) at dilution of 1:200, CL488-Phalloidin (green).



1X10⁶ HepG2 cells were intracellularly stained with 0.2 ug CoraLite®594 Anti-Human TOM20 (CL594-11802) (red), or 0.2 ug Control Antibody. Cells were fixed with 4% PFA and permeabilized with Flow Cytometry Perm Buffer (PF00011-C).