

For Research Use Only

CoraLite®594-conjugated 14-3-3 Sigma Monoclonal antibody



Catalog Number:CL594-66251

Basic Information

Catalog Number: CL594-66251	GenBank Accession Number: BC002995	Purification Method: Protein G purification
Size: 1000 µg/ml	GeneID (NCBI): 2810	CloneNo.: 3F10D9
Source: Mouse	UNIPROT ID: P31947	Recommended Dilutions: IF/ICC 1:50-1:500
Isotype: IgG1	Full Name: stratifin	Excitation/Emission maxima wavelengths: 588 nm / 604 nm
Immunogen Catalog Number: AG12644	Calculated MW: 28 kDa	
	Observed MW: 28-30 kDa	

Applications

Tested Applications: IF/ICC, FC (Intra)	Positive Controls: IF/ICC : MCF-7 cells,
Species Specificity: human	

Background Information

14-3-3 Sigma is a member 14-3-3 family of highly conserved proteins participating in diverse cellular processes including cell cycle progression. It is exclusively present in various epithelial cells, and alternatively named as human epithelial marker (HEM), or stratifin. Alteration of its expression has been linked to cancer.

Storage

Storage:
Store at -20°C. Avoid exposure to light.
Storage Buffer:
PBS with 50% Glycerol, 0.05% Proclin300, 0.5% BSA, pH 7.3.
Aliquoting is unnecessary for -20°C storage

For technical support and original validation data for this product please contact:

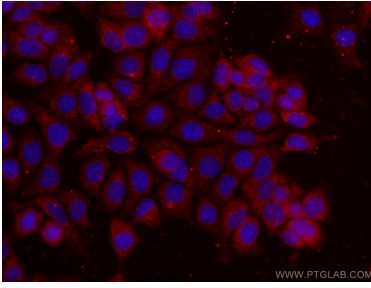
T: 4006900926

E: Proteintech-CN@ptglab.com

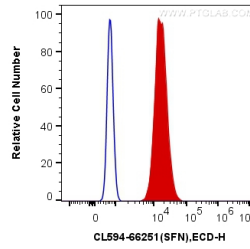
W: ptgcn.com

This product is exclusively available under Proteintech Group brand and is not available to purchase from any other manufacturer.

Selected Validation Data



Immunofluorescent analysis of (-20°C Ethanol) fixed MCF-7 cells using CoraLite@594 14-3-3 Sigma antibody (CL594-66251, Clone: 3F10D9) at dilution of 1:100.



1X10⁶ A431 cells were intracellularly stained with 0.2 ug CoraLite@594 Anti-Human 14-3-3 Sigma (CL594-66251, Clone:3F10D9) (red), or 0.2 ug Mouse IgG1 Isotype Control (CL594-66360, Clone: T1F8D3F10) (blue). Cells were fixed with 4% PFA and permeabilized with Flow Cytometry Perm Buffer (PF00011-C).