

For Research Use Only

# CoraLite®594-conjugated Alpha 1B-Glycoprotein Monoclonal antibody



**Catalog Number: CL594-66260**

## Basic Information

<b>Catalog Number:</b> CL594-66260	<b>GenBank Accession Number:</b> BC035719	<b>CloneNo.:</b> 4D4E5
<b>Size:</b> 1000 µg/ml	<b>GeneID (NCBI):</b> 1	<b>Recommended Dilutions:</b> IF 1:50-1:500
<b>Source:</b> Mouse	<b>Full Name:</b> alpha-1-B glycoprotein	<b>Excitation/Emission maxima wavelengths:</b> 593 nm/614 nm
<b>Isotype:</b> IgG1	<b>Calculated MW:</b> 54 kDa	
<b>Purification Method:</b> Protein G purification	<b>Observed MW:</b> 72 kDa	
<b>Immunogen Catalog Number:</b> AG5414		

## Applications

<b>Tested Applications:</b> IF	<b>Positive Controls:</b> IF : HepG2 cells;
<b>Species Specificity:</b> human	

## Background Information

Alpha-1B-glycoprotein (A1BG) is a plasma protein and is a member of the immunoglobulin superfamily. A1BG contains 474 amino acids and has 5 intrachain disulfide bonds. It has been reported that cysteine-rich secretory protein 3 (CRISP-3) is a specific and high-affinity ligand of A1BG. A1BG-CRISP-3 complex displays a similar function in protecting the circulation from a potentially harmful effect of free CRISP3 (PMID: 15461460).

## Storage

**Storage:**  
Store at -20°C. Avoid exposure to light. Stable for one year after shipment.  
**Storage Buffer:**  
PBS with 50% Glycerol, 0.05% Proclin300, 0.5% BSA, pH 7.3.  
Aliquoting is unnecessary for -20°C storage

For technical support and original validation data for this product please contact:

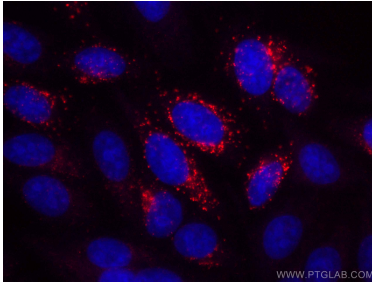
T: 4006900926

E: [Proteintech-CN@ptglab.com](mailto:Proteintech-CN@ptglab.com)

W: [ptgcn.com](http://ptgcn.com)

**This product is exclusively available under Proteintech Group brand and is not available to purchase from any other manufacturer.**

## Selected Validation Data



Immunofluorescent analysis of (-20°C Ethanol) fixed HepG2 cells using CoraLite@594 Alpha 1B-Glycoprotein antibody (CL594-66260, Clone: 4D4E5) at dilution of 1:100.