

For Research Use Only

CoraLite®594-conjugated ACC1 Monoclonal antibody



Catalog Number: CL594-67373

Basic Information

Catalog Number: CL594-67373	GenBank Accession Number: BC137287	CloneNo.: 1A11G10
Size: 1000 µg/ml	GeneID (NCBI): 31	Recommended Dilutions: IF 1:50-1:500
Source: Mouse	Full Name: acetyl-Coenzyme A carboxylase alpha	Excitation/Emission maxima wavelengths: 593 nm/614 nm
Isotype: IgG2a	Calculated MW: 2383 aa, 275 kDa	
Purification Method: Protein A purification	Observed MW: 260-270 kDa	
Immunogen Catalog Number: AG17503		

Applications

Tested Applications: FC (Intra), IF	Positive Controls: IF : HepG2 cells;
Species Specificity: Human	

Background Information

ACACA (Acetyl-CoA carboxylase 1, ACC), also named as ACAC, ACC1 and ACCA, belongs to the biotin containing enzyme family. It catalyzes the synthesis of malonyl-CoA, which is an intermediate substrate playing a pivotal role in the regulation of fatty acid metabolism and energy production. ACACA is involved in the biosynthesis of fatty acids, and malonyl-CoA produced is used as a building block to extend the chain length of fatty acids by fatty acid synthase (FAS) (PMID:19900410).

Storage

Storage:
Store at -20°C. Avoid exposure to light. Stable for one year after shipment.
Storage Buffer:
PBS with 50% Glycerol, 0.05% Proclin300, 0.5% BSA, pH 7.3.
Aliquoting is unnecessary for -20°C storage

For technical support and original validation data for this product please contact:

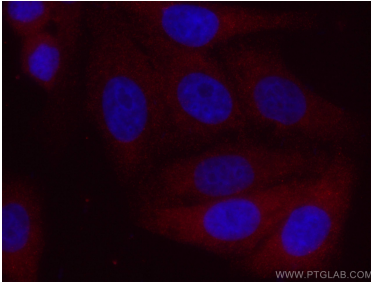
T: 4006900926

E: Proteintech-CN@ptglab.com

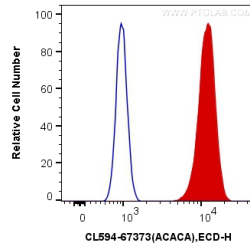
W: ptgcn.com

This product is exclusively available under Proteintech Group brand and is not available to purchase from any other manufacturer.

Selected Validation Data



Immunofluorescent analysis of (-20°C Ethanol) fixed HepG2 cells using CoraLite®594-conjugated ACC1 antibody (CL594-67373, Clone: 1A11G10) at dilution of 1:100.



1X10⁶ HeLa cells were intracellularly stained with 0.4 ug CoraLite®594 Anti-Human ACC1 (CL594-67373, Clone:1A11G10) (red), or 0.4 ug Mouse IgG2a Isotype Control (CL594-66360-2, Clone: K11A1B2A2) (blue). Cells were fixed with 4% PFA and permeabilized with Flow Cytometry Perm Buffer (PF00011-C).