

For Research Use Only

CoraLite®647-conjugated PAX8 Polyclonal antibody



Catalog Number: CL647-10336

Featured Product

Basic Information

Catalog Number:

CL647-10336

Size:

1000 µg/ml

Source:

Rabbit

Isotype:

IgG

Purification Method:

Antigen affinity purification

Immunogen Catalog Number:

AG0306

GenBank Accession Number:

BC001060

GeneID (NCBI):

7849

Full Name:

paired box 8

Calculated MW:

48 kDa

Observed MW:

48 kDa, 58 kDa

Recommended Dilutions:

IF 1:50-1:500

Excitation/Emission maxima
wavelengths:

650 nm/665 nm

Applications

Tested Applications:

IF

Species Specificity:

human, mouse, rat

Positive Controls:

IF : SKOV-3 cells;

Background Information

PAX8 is a member of the paired box (PAX) family of transcription factors, typically containing a paired box domain and a paired-type homeodomain. It is expressed during organogenesis of the thyroid gland, kidney and Mullerian system. It is thought to regulate the expression of Wilms tumor suppressor (WT1) gene and mutations in PAX8 have been associated with Wilms tumor cells, thyroid and ovarian carcinomas. PAX8 is a useful marker in distinguishing ovarian carcinomas from mammary carcinomas (PMID: 18724243). PAX8 is expressed in a high percentage of ovarian serous, endometrioid, and clear cell carcinomas, but only rarely in primary ovarian mucinous adenocarcinomas.

This antibody can detect all 5 isoforms of PAX8 (31 kDa, 34 kDa, 41 kDa, 43 kDa and 48 kDa). A 58-60 kDa form has also been reported (PMID:15650356, 1049952). Proteintech's 10336-1-AP antibody has cross-reactivities with the other PAX family members.

Storage

Storage:

Store at -20°C. Avoid exposure to light. Stable for one year after shipment.

Storage Buffer:

PBS with 50% Glycerol, 0.05% Proclin300, 0.5% BSA, pH 7.3.

Aliquoting is unnecessary for -20°C storage

For technical support and original validation data for this product please contact:

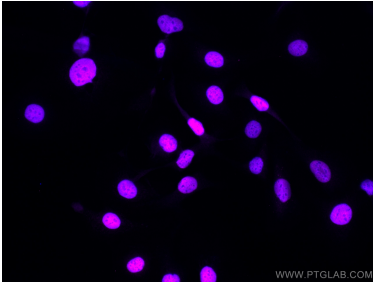
T: 4006900926

E: Proteintech-CN@ptglab.com

W: ptgcn.com

This product is exclusively available under Proteintech Group brand and is not available to purchase from any other manufacturer.

Selected Validation Data



Immunofluorescent analysis of (4% PFA) fixed SKOV-3 cells using CoraLite®647 PAX8 antibody (CL647-10336) at dilution of 1:200.