

HumanKine[®] pro IGF-II (Recombinant Human)



Animal Component-Free	Human cell expressed	Tag-Free	Endotoxin Free
-----------------------	----------------------	----------	----------------

Product Description

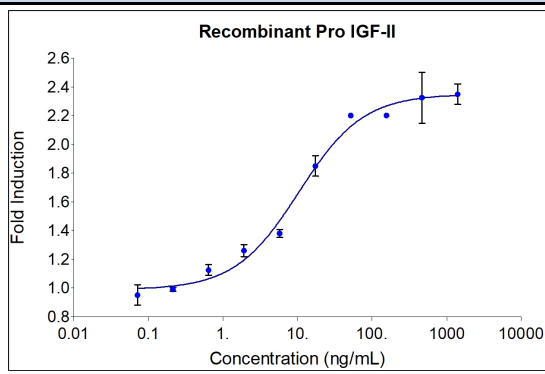
Animal-free Recombinant Human pro-IGF-II is expressed in human 293 cells as a monomeric glycoprotein with an apparent molecular mass of 25 kDa. Glycosylation contributes to stability in cell growth media and other applications. IGF-II expressed in E. coli is typically 7.5 kDa and nonglycosylated. This cytokine is produced in a human cell expression system with serum-free, chemically defined media.

Alternative Names	C11orf43, FLJ22066, FLJ44734, IGF II, IGF2, INSIGF, Insulin like growth factor II, pp9974, Somatomedin A
Source	Human Embryonic Kidney cells (HEK293). HEK293-derived pro IGF-II protein

Specifications

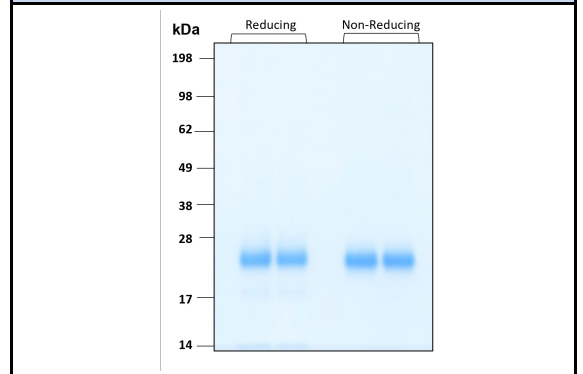
Test	Method	Specification
Activity	Dose-dependent stimulation of the proliferation of MCF-7 cells (human breast cancer cell line)	12-80 ng/mL
Molecular Mass	SDS-PAGE	25 kDa reduced and non-reduced, monomer, glycosylated
Purity	SDS-PAGE	>95%
Endotoxin	LAL	<1 EU/ μ g

Activity Data



The activity was determined by the dose-dependent stimulation of the proliferation of MCF-7 cells (human breast cancer cell line) using the Promega CellTiter96[®] Aqueous Non-Radioactive Cell Proliferation Assay.

SDS-PAGE



Preparation	
Shipping Temperature	ambient temperature
Formulation	10 mM Tris-HCl pH 7.4 + 350 mM NaCl, See Certificate of Analysis for details
Reconstitution	Briefly centrifuge the vial before opening. It is recommended to reconstitute the protein to 0.2 mg/mL in sterile 1x PBS pH 7.4 containing 0.1% endotoxin-free recombinant human serum albumin (HSA). Gently swirl or tap vial to mix.

Stability and Storage	Product Form	Temperature Conditions	Storage Time (From Date of Receipt)
	Lyophilized	-20°C to -80°C	Until Expiry Date
	Lyophilized	Room Temperature	2 weeks
	Reconstituted as per CofA	-20°C to -80°C	6 months
	Reconstituted as per CofA	4°C	1 week
Avoid repeated freeze-thaw cycles.			

www.ptglab.com

Document #: FR-QA118-101 Rev 0
Data Sheet Version #: 1

Proteintech Group, Inc.
5500 Pearl Street, Suite 400 Rosemont, IL 60612
t: 1-888-478-4522; f: 1-312-455-8408
Email: proteintech@ptglab.com