

**HumanKine® EPO (Recombinant Human)**



Animal Component-Free	Human cell expressed	Tag-Free	Endotoxin Free
-----------------------	----------------------	----------	----------------

**Product Description**

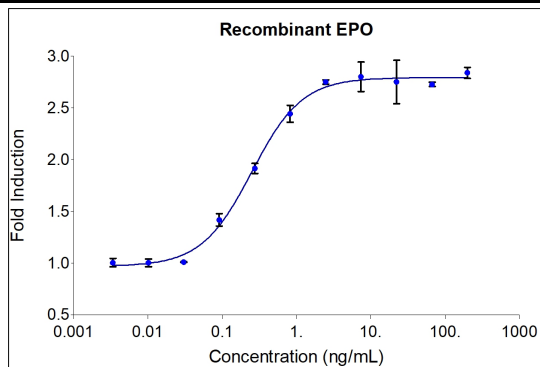
Animal-free Recombinant Human EPO is expressed in human 293 cells in a serum-free, chemically defined media. EPO has more abundant and diverse glycan profiles and exhibits a lower molecular mass and substantially higher content of neutral glycans than the CHO cell produced version. See "EPO Authentic Glycan Structure" article for more information on the comparison of glycan structure.

Alternative Names	EP, EPO, Epoetin, erythropoietin, MVCD2
Source	Human Embryonic Kidney cells (HEK293). HEK293-derived EPO protein

**Specifications**

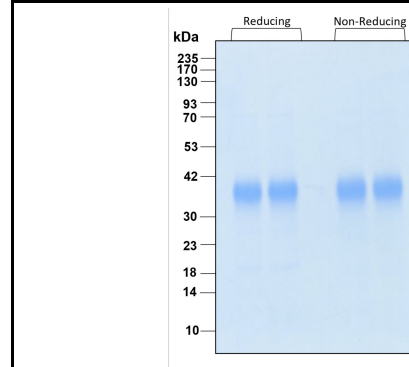
Test	Method	Specification
Activity	Dose-dependent stimulation of the proliferation of human TF-1 cells (human erythroleukemic indicator cell line)	0.2-3.0 ng/mL
Molecular Mass	SDS-PAGE	36 kDa reduced and non-reduced, monomer, glycosylated
Purity	SDS-PAGE	>95%
Endotoxin	LAL	<1 EU/μg

**Activity Data**



Recombinant human EPO (HZ-1168) stimulates dose-dependent proliferation of the TF-1 human erythroleukemic indicator cell line. Cell number was quantitatively assessed by PrestoBlue® Cell Viability Reagent. TF-1 cells were treated with increasing concentrations of recombinant EPO for 72 hours. The EC<sub>50</sub> was determined using a 4-parameter non-linear

**SDS-PAGE**



Preparation	
Shipping Temperature	ambient temperature
Formulation	1x PBS, See Certificate of Analysis for details
Reconstitution	Briefly centrifuge the vial before opening. It is recommended to reconstitute the protein to 0.2 mg/mL in sterile 1x PBS pH 7.4 containing 0.1% endotoxin-free recombinant human serum albumin (HSA). Gently swirl or tap vial to mix.

Stability and Storage	Product Form	Temperature Conditions	Storage Time (From Date of Receipt)
	Lyophilized	-20°C to -80°C	Until Expiry Date
	Lyophilized	Room Temperature	2 weeks
	Reconstituted as per CofA	-20°C to -80°C	6 months
	Reconstituted as per CofA	4°C	1 week
Avoid repeated freeze-thaw cycles.			

[www.ptglab.com](http://www.ptglab.com)

Document #: FR-QA118-101 Rev 0  
Data Sheet Version #: 1

**Proteintech Group, Inc.**  
5500 Pearl Street, Suite 400 Rosemont, IL 60612  
t: 1-888-478-4522; f: 1-312-455-8408  
Email: [proteintech@ptglab.com](mailto:proteintech@ptglab.com)