

# 全系列

## 内参/标签抗体

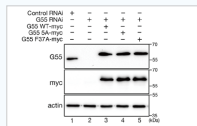
★ 文献明星抗体  
种属覆盖应用广  
高效特异性

### 内参抗体

#### β-Actin (66009-1-Ig)



528 Publications



引自PMID: 29689198

1. *Cell Res.* 2019 Jul;29(7):548-561.
2. *Nat Commun.* 2019 May 30;10(1):2375.
3. *Nat Commun.* 2019 Apr 23;10(1):1858.
4. *Sci Adv.* 2019 Feb 27;5(2):eaau6328.
5. *Nat Cell Biol.* 2018 Nov;20(11):1256-1266.

#### GAPDH (60004-1-Ig)



1596 Publications



引自PMID: 25908662

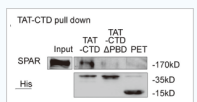
1. *Nat Cell Biol.* 2019 May;21(5):651-661.
2. *Brain.* 2019 May 1;142(5):1349-1364.
3. *Sci Rep.* 2019 Apr 8;9(1):5790.
4. *Cell Rep.* 2019 Mar 12;26(11):2984-2997.e4.
5. *Sci Adv.* 2019 Feb 13;5(2):eaav4971.

### 标签抗体

#### 6\*His, His-Tag (66005-1-Ig)



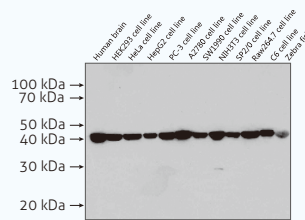
146 Publications



引自PMID: 26880202

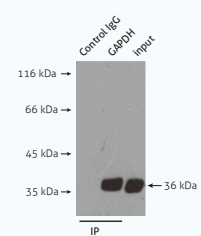
1. *Nature.* 2019 Jul;571(7763):127-131.
2. *Sci Adv.* 2019 Mar 13;5(3):eaau7887.
3. *Nat Commun.* 2019 Mar 1;10(1):991.
4. *J Clin Invest.* 2019 Jan 2;129(1):252-267.
5. *Nature.* 2018 Apr;556(7700):255-258.

### 免疫印迹



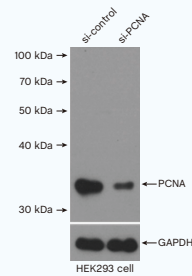
β-Actin Antibody 66009-1-Ig

### 免疫沉淀



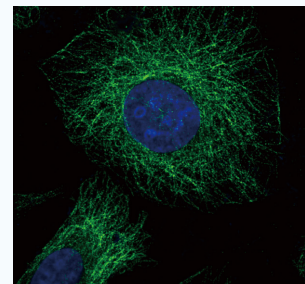
GAPDH Antibody 60004-1-Ig

### 抗体特异性验证



PCNA Antibody 10205-2-AP

### 免疫荧光



α-Tubulin Antibody 66031-1-Ig



实验技术 • 优惠活动

☎ 027-87531629

☎ 4006900926

✉ Proteintech-CN@ptglab.com

	适用范围	名称	分子量	抗体类型	货号	应用	WB推荐稀释比	文献
内参抗体	胞浆或全细胞	GAPDH	36 kDa	鼠单抗	60004-1-Ig	WB, IP, IHC, IF, FC	1:5000-1:50000	1596
				兔多抗	10494-1-AP	WB, IP, IHC, IF, FC, CoIP	1:10000-1:40000	1168
		β-Actin	42 kDa	鼠单抗	66009-1-Ig	WB, IP, IHC, IF, FC	1:5000-1:50000	528
				兔多抗	20536-1-AP	WB, IHC, IF	1:5000-1:15000	402
		α-Tubulin	50-55 kDa	鼠单抗	66031-1-Ig	WB, IP, IHC, IF, FC	1:2000-1:10000	127
				兔多抗	11224-1-AP	WB, IP, IHC, IF, FC	1:800-1:8000	219
	β-Tubulin	50-55 kDa	鼠单抗	66240-1-Ig	WB, IP, IHC, IF	1:20000-1:100000	32	
			兔多抗	10094-1-AP	WB, IP, IHC, IF, FC, CoIP	1:500-1:2000	111	
	Vinculin	117 kDa	鼠单抗	66305-1-Ig	WB, IHC, IF, FC	1:2000-1:20000	13	
			兔多抗	10298-1-AP	WB, IP, IF, FC	1:1000-1:6000	43	
	细胞核膜	Lamin A/C	65-75 kDa	兔多抗	10298-1-AP	WB, IP, IF, FC	1:1000-1:6000	43
		Lamin B1	66-72 kDa	鼠单抗	66095-1-Ig	WB, IP, IHC, IF, FC	1:5000-1:50000	50
	细胞核	TBP	33-43 kDa*	兔多抗	12987-1-AP	WB, IP, IHC, IF, FC, CHIP	1:1000-1:6000	208
				鼠单抗	66166-1-Ig	WB, IP, IHC, IF, FC	1:2000-1:16000	3
		PCNA	36 kDa	兔多抗	22006-1-AP	WB, IP, IHC, IF	1:500-1:3000	23
				鼠单抗	60097-1-Ig	WB, IP, IHC, IF, FC	1:5000-1:50000	17
		Histone-H3	15-17 kDa	兔多抗	10205-2-AP	WB, IP, IHC, IF, FC	1:2000-1:10000	176
				鼠单抗	17168-1-AP	WB, IHC, IF	1:1000-1:6000	136
	YY1	65-70 kDa	兔多抗	66281-1-Ig	WB, IP, IHC, IF	1:5000-1:50000	8	
			鼠单抗	22156-1-AP	WB, IP, IHC	1:500-1:2000	2	
	膜蛋白	ATP1A1	97-110 kDa	兔多抗	14418-1-AP	WB, IP, IHC, IF	1:500-1:1000	25
				鼠单抗	55187-1-AP	WB, IHC, IF, FC	1:1000-1:4000	2
	线粒体	VDAC1/Porin	31-37 kDa	兔多抗	66345-1-Ig	WB, IHC	1:5000-1:50000	2
				鼠单抗	10866-1-AP	WB, IP, IHC, IF	1:500-1:3000	47
		COX4I1	17-20 kDa	兔多抗	66110-1-Ig	WB, IHC, IF, FC	1:2000-1:8000	-
	鼠单抗			11242-1-AP	WB, IP, IHC, IF, FC	1:5000-1:50000	88	
	COX4I2	17-20 kDa	兔多抗	11463-1-AP	WB, IP, IHC, IF	1:500-1:3000	10	
			鼠单抗	66241-1-Ig	IHC, IF	—	13	
	细胞增殖	BrdU	—	兔多抗	66171-1-Ig	WB, IHC	1:2000-1:20000	-
				鼠单抗	66171-1-Ig	WB, IHC	1:2000-1:20000	-
全血/血浆/血清	Transferrin	77 kDa	兔多抗	17435-1-AP	WB, IHC, IF	1:200-1:1000	8	
			鼠单抗	66051-1-Ig	WB, IP, IHC, IF	1:5000-1:50000	3	
	Albumin	66 kDa	兔多抗	16475-1-AP	WB, IP, IHC, IF	1:5000-1:50000	19	

\*TBP在人类是37-43 kDa, 在小鼠和大鼠中是33-36 kDa

	名称	抗体类型	货号	应用	WB推荐稀释比	文献
标签抗体	6*His, His-tag	鼠单抗	66005-1-Ig	WB, IP, IF, FC	1:5000-1:50000	145
		兔多抗	10001-0-AP	WB	1:500-1:2000	8
	Flag tag	鼠单抗	66008-3-Ig	WB, IP, IF	1:1000-1:5000	2
		兔多抗	20543-1-AP	WB, IP, IHC, IF, FC, CoIP	1:200-1:1000	74
	GFP tag	鼠单抗	66002-1-Ig	WB, IP, IF	1:2000-1:16000	102
		兔多抗	50430-2-AP	WB, IP, IHC, IF	1:1000-1:4000	136
	GST tag	鼠单抗	66001-2-Ig	WB, IP, IF	1:5000-1:50000	2
		兔多抗	10000-0-AP	WB, IP, FC	1:1000-1:4000	43
	HA tag	鼠单抗	66006-2-Ig	WB, IP	1:10000-1:100000	5
		兔多抗	51064-2-AP	WB, IP, IF	1:1000-1:8000	71
	MYC tag	鼠单抗	60003-2-Ig	WB, IP, IF	1:2000-1:10000	16
		兔多抗	16286-1-AP	WB, IP, IF	1:1000-1:8000	21
	V5 tag	兔多抗	14440-1-AP	WB, IP	1:2000-1:20000	2
	S1 tag	鼠单抗	66165-1-Ig	WB	1:5000-1:50000	-
	MBP tag	鼠单抗	66003-1-Ig	WB, IP, IF	1:1000-1:8000	6
		兔多抗	15089-1-AP	WB	1:1000-1:6000	5

	适用范围	名称	货号	应用	WB推荐稀释比	文献
标记内参/标签抗体	HRP标记内参抗体	HRP-anti GAPDH	HRP-60004	WB	1:5000-1:50000	96
		HRP-anti β-Actin	HRP-66009	WB	1:2000-1:50000	-
		HRP-anti α-Tubulin	HRP-66031	WB	1:2000-1:16000	19
		HRP-anti β-Tubulin	HRP-66240	WB	1:2000-1:16000	-
	HRP标记标签抗体	HRP-anti 6*His, His-tag	HRP-66005	WB	1:5000-1:50000	19
		HRP-anti GFP tag	HRP-66002	WB	1:5000-1:50000	1
		HRP-anti GST tag	HRP-66001	WB	1:5000-1:50000	1
		HRP-anti Flag tag	HRP-66008	WB	1:5000-1:50000	1
	荧光标记内参抗体	CoraLite594-Conjugated Beta Actin	CL594-66009	IF	—	-
		CoraLite488-Conjugated Beta Actin	CL488-66009	IF, FC	—	-
		CoraLite594-Conjugated Alpha Tubulin	CL594-66031	IF	—	-
		CoraLite488-Conjugated Alpha Tubulin	CL488-66031	IF	—	-

	名称	货号	应用	WB推荐稀释比	文献
同型对照抗体	Mouse IgG1 isotype control	66360-1-Ig	WB, FC	1:500-1:2000	-