



proteintech®

Antibodies | ELISA kits | Proteins

# 经典集锦

## ANTIBODY



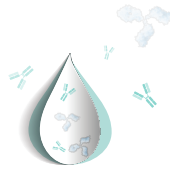
www.ptglab.com



proteintech®

Antibodies | ELISA kits | Proteins

One day your  
research  
will on  
the map



Over 26,000 publications now feature Proteintech products worldwide.  
Thank you for putting Proteintech on the map.

As the silent partner in your research

# 目录 contents

---

◎ Loading control antibodies 内参/标签抗体	6
◎ Organelle and subcellular Markers 细胞器和亚细胞标记物	10
◎ Cell cycle 细胞周期	16
◎ Apoptosis 凋亡	18
◎ Autophagy 自噬	20
◎ Stem cell 干细胞	22
◎ Cancer 肿瘤	24
◎ Neuroscience 神经生物学	26
◎ Cardiovascular research 心血管研究	30
◎ Endocrinology & Metabolism 内分泌与代谢	32
◎ Immunology 免疫学	34

---

# 经典抗体精选



## 内参/标签抗体

- 547  **$\beta$ -Actin Antibody** (Cat.No.66009-1-Ig)
- 590 **GAPDH Antibody** (Cat.No.60004-1-Ig)
- 70 **6\*His, His-Tag Antibody** (Cat.No.66005-1-Ig)
- 56 **GFP Tag Antibody** (Cat.No.66002-1-Ig)



## 细胞器和亚细胞标记物

- 132 **ARL13B Antibody** (Cat.No.17711-1-AP)
- 4 **Acetylated Tubulin Antibody** (Cat.No.66200-1-Ig)
- 27 **TOM20 Antibody** (Cat.No.11802-1-AP)
- 18 **Mitofilin Antibody** (Cat.No.10179-1-AP)



## 细胞周期

- 99 **Cyclin D1 Antibody** (Cat.No.60186-1-Ig)
- 32 **CDK4 Antibody** (Cat.No.11026-1-AP)



## 凋亡

- 1 **Caspase 3 Antibody** (Cat.No.66470-2-Ig)
- 115 **Caspase 9/P35/P10 Antibody** (Cat.No.10380-1-AP)



## 自噬

- 5 **LC3 Antibody** (Cat.No.14600-1-AP)
- 70 **P62/SQSTM1 Antibody** (Cat.No.18420-1-AP)



## 干细胞

- 30 LIN28 Antibody (Cat.No.11724-1-AP)
- 30 OCT4 Antibody (Cat.No.11263-1-AP)



## 肿瘤

- 201 PAX8 Antibody (Cat.No.10336-1-AP)
- 1 Claudin 18 Antibody (Cat.No.66167-1-Ig)



## 神经生物学

- 49 IBA1 Antibody (Cat.No.10904-1-AP)
- 28 GFAP Antibody (Cat.No.16825-1-AP)
- 610 TDP-43 Antibody (Cat.No.10782-2-AP)
- 9 FUS/TLS Antibody (Cat.No.60160-1-Ig)



## 心血管研究

- 5 ACTA2 Antibody (Cat.No.23081-1-AP)
- 23 CD31 Antibody (Cat.No.11265-1-AP)



## 内分泌与代谢

- 2 Perilipin 2 Antibody (Cat.No.15294-1-AP)
- 9 Insulin Antibody (Cat.No.15848-1-AP)



## 免疫学

- 3 CD3 Antibody (Cat.No.17617-1-AP)
- 18 CD68 Antibody (Cat.No.25747-1-AP)



# 内参 / 标签抗体

完整的抗体生产线 严格的抗体质检标准  
 种属：人 \ 大鼠 \ 小鼠 \ 斑马鱼...  
 应用：ELISA \ WB \ IHC \ IF \ IP

## 内参抗体

	名称	分子量	文献数量	抗体类型	货号	应用	WB 推荐稀释比
胞浆或全细胞	GAPDH	36 kDa	590	鼠单抗	60004-1-Ig	WB, IF, FC, IP, IHC	1:5000-1:20000
			490	兔多抗	10494-1-AP	WB, IHC, IP, IF, FC	1:2000-1:20000
			599	鼠单抗	60008-1-Ig	WB, IHC, IF, FC	1:2000-1:20000
	β-Actin	42 kDa	547	鼠单抗	66009-1-Ig	WB, IHC, FC, IP, IF	1:5000-1:50000
			94	兔多抗	20536-1-AP	WB, IF, IHC	1:1000-1:10000
			35	鼠单抗	66031-1-Ig	WB, IHC, FC, IP, IF	1:2000-1:10000
	α-Tubulin	50-55 kDa	71	兔多抗	11224-1-AP	WB, IP, IHC, FC, IF	1:500-1:10000
			1	兔多抗	14555-1-AP	WB, IHC, IF	1:500-1:5000
			3	鼠单抗	66240-1-Ig	WB, IHC, IF, IP	1:2000-1:20000
β-Tubulin	50-55 kDa	19	兔多抗	10068-1-AP	WB, IHC, IF, IP	1:500-1:5000	
		32	兔多抗	10094-1-AP	WB, IF, IP, IHC, FC	1:500-1:5000	
		2	鼠单抗	66305-1-Ig	WB, IF, IHC, FC	1:2000-1:20000	

	名称	分子量	文献数量	抗体类型	货号	应用	WB 推荐稀释比
细胞核膜	Lamin A/C	65-75 kDa	18	兔多抗	10298-1-AP	WB, IP, FC, IF	1:1000-1:10000
	Lamin B1	66-72 kDa	17	鼠单抗	66095-1-Ig	WB, FC, IP, IF	1:5000-1:50000
			76	兔多抗	12987-1-AP	WB, IHC, IP, FC, IF	1:500-1:5000

	名称	分子量	文献数量	抗体类型	货号	应用	WB 推荐稀释比
细胞核	TBP	33-43 kDa*	1	鼠单抗	66166-1-Ig	WB, IP, IHC, IF	1:2000-1:20000
			11	兔多抗	22006-1-AP	WB, IP, IHC, IF	1:500-1:5000
	PCNA	36 kDa	6	鼠单抗	60097-1-Ig	WB, IHC, FC, IP, IF	1:5000-1:50000
			63	兔多抗	10205-2-AP	WB, IF, IP, FC, IHC	1:1000-1:10000
	Histone-H3	15-17 kDa	40	兔多抗	17168-1-AP	WB, IHC, IF	1:500-1:5000
YY1	65-70 kDa	1	鼠单抗	66281-1-Ig	WB, IP, IF, IHC	1:5000-1:50000	
		2	兔多抗	22156-1-AP	WB, IP, IHC	1:500-1:5000	

\*TBP在人类是37-43 kDa, 在小鼠和大鼠中是33-36 kDa

	名称	分子量	文献数量	抗体类型	货号	应用	WB 推荐稀释比
膜蛋白	ATP1A1	97-110 kDa	6	兔多抗	14418-1-AP	WB, IP, IHC	1:500-1:5000
			1	兔多抗	55187-1-AP	WB, IHC, FC, IF	1:1000-1:10000

	名称	分子量	文献数量	抗体类型	货号	应用	WB 推荐稀释比
线粒体	VDAC1/ Porin	31-37 kDa		鼠单抗	66345-1-Ig	WB, IHC	1:5000-1:50000
			27	兔多抗	10866-1-AP	WB, IHC, IP, IF	1:500-1:5000
				兔多抗	55259-1-AP	WB, IHC, FC, IP	1:200-1:2000
	COX4I1	17-20 kDa		鼠单抗	66110-1-Ig	WB, IHC, IF, FC	1:2000-1:20000
			31	兔多抗	11242-1-AP	WB, IF, IP, FC, IHC	1:500-1:5000
COX4I2	17-20 kDa	6	兔多抗	11463-1-AP	WB, IHC, IF, IP	1:500-1:5000	

	名称	分子量	文献数量	抗体类型	货号	应用	IHC 推荐稀释比
细胞增殖	BrdU	-	5	鼠单抗	66241-1-Ig	IHC, IF	1:200-1:1000

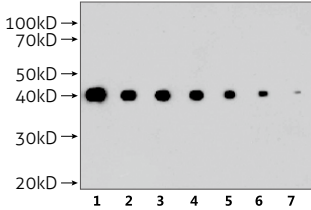
	名称	分子量	文献数量	抗体类型	货号	应用	WB 推荐稀释比
全血/血浆/血清	Transferrin	77 kDa	5	鼠单抗	66171-1-Ig	WB, IHC	1:2000-1:20000
				兔多抗	17435-1-AP	WB, IHC	1:200-1:1000
	Albumin	66 kDa	3	鼠单抗	66051-1-Ig	WB, IP, IHC, IF	1:5000-1:50000
			12	兔多抗	16475-1-AP	WB, IP, IHC, IF	1:5000-1:50000

# 内参抗体

## β-Actin Antibody (Cat.No.66009-1-Ig)

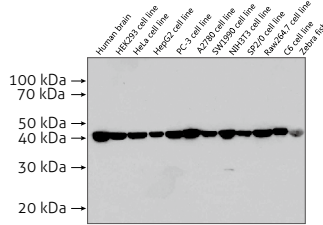
547 Publications

KD/KO validated



HeLa whole cell lysate(15ug/lane) was followed by western blot with beta-actin antibody 66009-1-Ig at dilution of

Lane 1: 1:5000      Lane 5: 1:80000  
 Lane 2: 1:10000    Lane 6: 1:160000  
 Lane 3: 1:20000    Lane 7: 1:320000  
 Lane 4: 1:40000

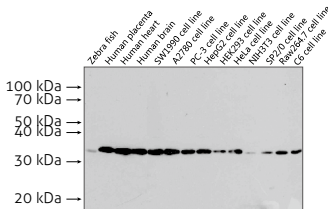


Western blot analysis of beta-actin in various tissues and cell lines using antibody 66009-1-Ig at a dilution of 1:20000.

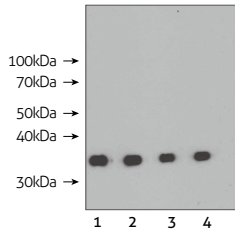
- ◆ 特异性验证 RNA interference
- ◆ 应用检测全 ELISA, FC, IF, IHC, WB
- ◆ 适用物种多 human, mouse, rat, hamster, zebrafish, monkey, goat, pig
- ◆ 效价高 WB稀释比达1:320000

## GAPDH Antibody (Cat.No.60004-1-Ig)

590 Publications



Western blot analysis of GAPDH in various tissues and cell lines using Proteintech antibody 60004-1-Ig at a dilution of 1:10000.



Western blot of HeLa cell with anti-GAPDH (60004-1-Ig) at various dilutions.

Lane 1: 1:4000    Lane 3: 1:16000  
 Lane 2: 1:8000    Lane 4: 1:32000

- ◆ 应用检测全 ELISA, FC, IF, IHC, WB
- ◆ 适用物种多 覆盖 16 种以上  
 动物: human, mouse, rat, hamster, monkey, pig, Porcine Müller, swine, cow, Xenopus laevis, fish, Cyprinus carpio, zebrafish, Eelworm, moth  
 植物: Arabidopsis thaliana, soybean  
 真菌: yeast
- ◆ 被Cell, Nat Cell Biol 封面文章引用

## 标签抗体

名称	文献数量	抗体类型	货号	应用	WB 推荐稀释比
6*His, His-tag	70	鼠单抗	66005-1-Ig	WB, IP, IF	1:5000-1:50000
	6	兔多抗	10001-0-AP	WB	1:1000-1:5000
Flag tag	14	鼠单抗	66008-2-Ig	WB, IP, IF	1:1000-1:10000
	15	兔多抗	20543-1-AP	WB, IF	1:1000-1:4000
GFP tag	56	鼠单抗	66002-1-Ig	WB, IP, IF	1:2000-1:20000
	55	兔多抗	50430-2-AP	WB, IP, IF	1:2000-1:10000
GST tag	14	鼠单抗	66001-1-Ig	WB, IP	1:5000-1:50000
	24	兔多抗	10000-0-AP	WB, IP	1:2000-1:20000
HA tag	11	鼠单抗	66006-1-Ig	WB, IP, IF	1:5000-1:50000
	33	兔多抗	51064-2-AP	WB, IP, IF	1:2000-1:20000
MYC tag	7	鼠单抗	60003-2-Ig	WB, IP, IF	1:2000-1:20000
	11	鼠单抗	66004-1-Ig	WB, IP, IF	1:2000-1:20000
	5	兔多抗	16286-1-AP	WB, IP, IF	1:1000-1:4000
V5 tag	3	鼠单抗	66007-1-Ig	WB, IP	1:5000-1:50000
		兔多抗	14440-1-AP	WB, IP	1:2000-1:20000
S1 tag		鼠单抗	66165-1-Ig	WB	1:5000-1:50000
MBP tag	2	鼠单抗	66003-1-Ig	WB, IP, IF	1:2000-1:20000
	2	兔多抗	15089-1-AP	WB	1:1000-1:10000

## HRP 标记内参 / 标签抗体

类别	文献数量	鼠单抗名称	货号	应用	WB 推荐稀释比
HRP 标记内参抗体	19	HRP-anti GAPDH	HRP-60004	WB	1:5000-1:50000
		HRP-anti $\beta$ -Actin	HRP-60008	WB	1:2000-1:20000
		HRP-anti $\alpha$ -Tubulin	HRP-66031	WB	1:2000-1:10000
HRP 标记标签抗体		HRP-anti 6*His, His-tag	HRP-66005	WB	1:5000-1:50000
		HRP-anti GFP tag	HRP-66002	WB	1:5000-1:50000
		HRP-anti GST tag	HRP-66001	WB	1:5000-1:50000
		HRP-anti Flag tag	HRP-66008	WB	1:5000-1:50000

## 同型对照抗体

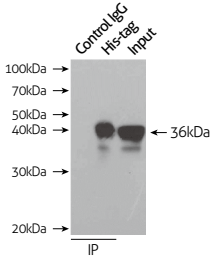
名称	抗体类型	货号	应用
Mouse IgG1 isotype control	鼠单抗	66360-1-Ig	WB



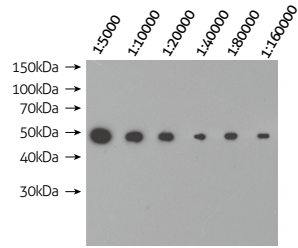
## 标签抗体

### 6\*His, His-Tag Antibody (Cat.No.66005-1-Ig)

70 Publications



IP Result of anti-6\*His, His-Tag (IP:66005-1-Ig, 7 $\mu$ g; Detection:66005-1-Ig 1:10000) with Transfected HEK-293 cells lysate 300 $\mu$ g.

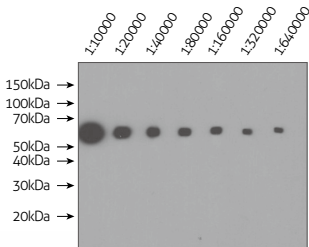


Western blot of 6\*His-tagged fusion protein with anti-6\*His tag (66005-1-Ig) at various dilutions.

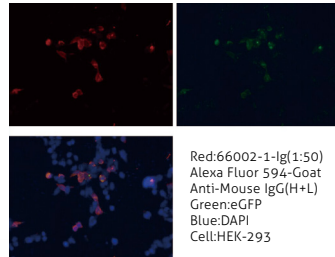
- ◆ 应用检测全 ELISA,IF, IP, WB
- ◆ 效价高 WB稀释比达1:160000

### GFP Tag Antibody (Cat.No.66002-1-Ig)

56 Publications



WB result of eGFP fusion protein with anti-eGFP tag (66002-1-Ig) with GFP fusion protein at various dilutions.

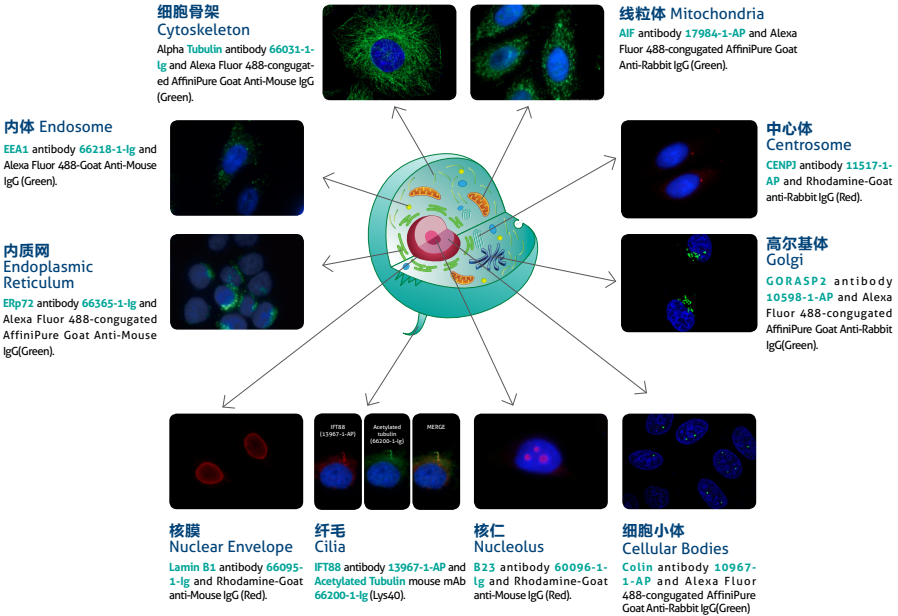


Immunofluorescent analysis of Transfected HEK-293 cells using 66002-1-Ig(GFP tag antibody) at dilution of 1:50 and Alexa Fluor 488-conjugated AffiniPure Goat Anti-Mouse IgG(H+L)

- ◆ 应用检测全 ELISA,IF, IP, WB
- ◆ 效价高 WB稀释比达1:640000

# 细胞器和亚细胞标记物

细胞器标记物抗体是细胞生物学中常用的研究工具。通过免疫荧光可用于观察细胞器的形态结构，了解蛋白定位及探究其功能。此外，在细胞器分离提取物的 western blot 的研究中可用作阳性对照。



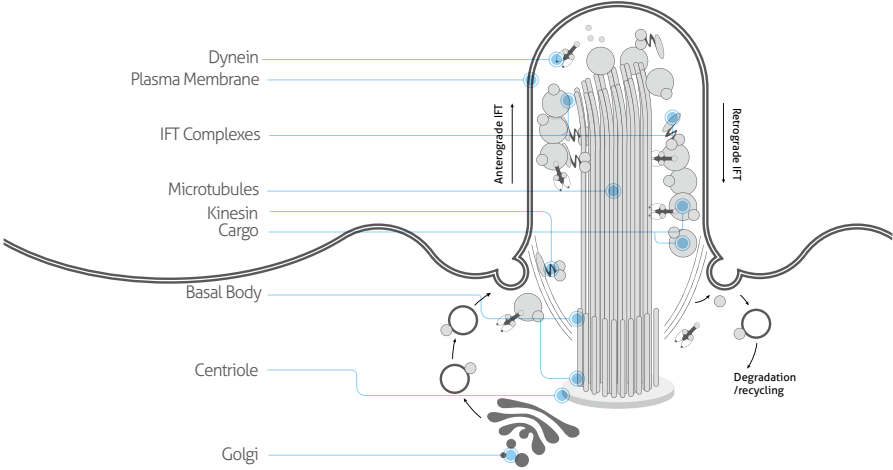
## 部分精选抗体

细胞器	文献数量	名称	货号	应用
线粒体 (Mitochondria)	31	COXIV	11242-1-AP	ELISA, WB, IHC, IF, IP, FC
	27	VDAC1/Porin	10866-1-AP	ELISA, WB, IHC, IP, IF
	17	Mitofilin	10179-1-AP	ELISA, IHC, WB, IP, FC, IF
	15	SMCR7L/MID51	20164-1-AP	ELISA, WB, IF, IP
	6	FASTKD2	17464-1-AP	ELISA, WB, IF, IP
	5	NDUFS7	15728-1-AP	ELISA, WB, IHC, IF
	13	AIF	17984-1-AP	ELISA, IF, IHC, IP, WB
内质网 (Endoplasmic eticulum)	11	Erp57/Erp60	15967-1-AP	ELISA, WB, IHC, WB, IP, FC, IF
	9	PDI	11245-1-AP	ELISA, WB, IF, FC, IP, IHC
	7	GRP94	14700-1-AP	ELISA, WB, IHC, IF, FC, IP
	6	Erp72	14712-1-AP	ELISA, WB, IHC, IF, IP
		Erp72	66365-1-Ig	ELISA, WB, IHC, IF

细胞器	文献数量	名称	货号	应用
高尔基体 (Golgi)	15	GORASP2	10598-1-AP	ELISA, WB, IHC, IP, IF
	5	GOLGA2/GM130	11308-1-AP	ELISA, WB, IHC, FC, IF
	5	Syntaxin 6	10841-1-AP	ELISA, WB, IF, IP, IHC
	31	NCL	10556-1-AP	ELISA, WB, IHC, IP
细胞核 (Nucleus)	2	FBL	16021-1-AP	ELISA, WB, IF, IP
	4	B23	10306-1-AP	ELISA, IHC, WB, IP, IF
	18	Lamin A /C	10298-1-AP	ELISA, WB, IF, FC, IP
	78	Lamin B1	12987-1-AP	ELISA, IHC, IP, WB, FC, IF, CHIP
	41	Histone-H3	17168-1-AP	ELISA, WB, IHC, IF
细胞骨架 (cytoskeleton)	83	Vimentin	10366-1-AP	ELISA, IHC, FC, IF, WB
	10	Cytokeratin 7-specific	17513-1-AP	ELISA, WB, IF, IP, IHC
	4	Connexin-43	15386-1-AP	ELISA, WB, FC, IP, IHC, IF
细胞连接 (Cellular junction)	76	E-cadherin	20874-1-AP	ELISA, IHC, IP, FC, IF, WB
	34	N-cadherin	13769-1-AP	ELISA, WB, IHC, IF
	25	ZO-1	21773-1-AP	ELISA, WB, IHC, FC, IP, IF
	3	Zyxin	10330-1-AP	ELISA, WB, IF
	36	CP110	12780-1-AP	ELISA, WB, IF, IP, FC, IHC
中心体 (Centriole)	21	CENPJ	11517-1-AP	ELISA, WB, IF
	6	Centrin 1	12794-1-AP	ELISA, WB, IF
	6	CEP250/CNAP1	14498-1-AP	ELISA, WB, IP, IHC, IF
	4	NUAK2	11592-1-AP	ELISA, WB, IHC, IF
	124	ARL13B	17711-1-AP	ELISA, WB, IHC, IP, IF
纤毛 (Cilia)	105	IFT88	13967-1-AP	ELISA, WB, IP, IHC, IF
	4	Acetylated Tubulin	66200-1-Ig	ELISA, WB, IHC, IF
	2	Rab23	11101-1-AP	ELISA, WB, IP, IHC
内体 (Endosome)	7	RAB11	15903-1-AP	ELISA, WB, IP, IF, IHC
	7	Caveolin-1	16447-1-AP	ELISA, WB, IP, IHC, IF
	14	TSG101	14497-1-AP	ELISA, WB, IHC, IF, IP, FC
	4	Integrin alpha-5	10569-1-AP	ELISA, WB, IF
外泌体 (Exosome)	2	Annexin V	11060-1-AP	ELISA, WB, IP, IHC, FC, IF
	3	CD63	25682-1-AP	ELISA, IHC, WB, IF, IF
	2	EXOSC8	11979-1-AP	ELISA, WB, IP, IHC, IF
		EEA1	66218-1-Ig	ELISA, IF
核糖体 (Ribosome)	8	Ribosomal protein L4	11302-1-AP	ELISA, IHC, IF, IP, WB
	2	RPL18A	14653-1-AP	ELISA, WB, IHC, IF
溶酶体 (Lysosome)	7	LAMP2	10397-1-AP	ELISA, WB, FC, IF, IHC
	2	LAMP1	21997-1-AP	ELISA, WB, IHC, IP, IF
过氧化物酶体 (Peroxisome)	4	Cardiac Troponin T	15513-1-AP	ELISA, IHC, WB, IF
	3	GATA4-Specific	19530-1-AP	ELISA, WB, IHC, IP
	6	Colin	10967-1-AP	ELISA, WB, IHC, FC, IP, IF
细胞小体 (Cellular Bodies)	7	eIF3	10219-1-AP	ELISA, WB, IP, IHC, IF
	5	BMI1	10832-1-AP	WB, IP, IHC, IF, CoIP, ChIP
	6	PTBP1	12582-1-AP	ELISA, WB, IHC, IP, IF

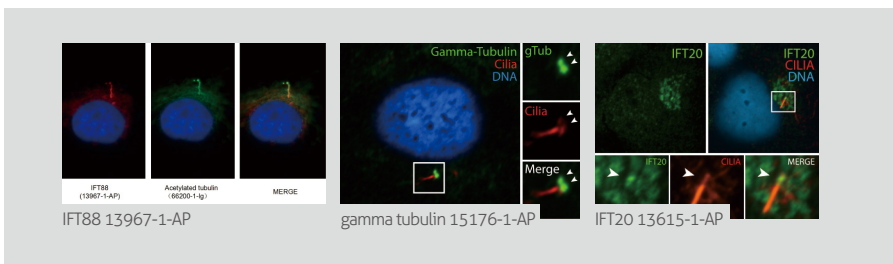
## 纤毛

纤毛是一种结构复杂、功能精细的细胞器，在机体各组织器官中发挥着重要的生理功能，其结构和功能异常会导致多种纤毛相关疾病的发生，如多囊肾、肾消耗病、视网膜色素变性、Bardet-Biedl 综合征、Joubert 综合征和 Meckel 综合征等。



## 部分精选抗体

	文献数量	靶标	货号	类型	应用
纤毛标记物	4	acetylated Tubulin(Lys40)	66200-1-Ig	MAb	ELISA, WB, IHC, IF
纤毛标记物		acetylated Tubulin(Lys40)	YF488-66200	MAb	ELISA, IF
朱伯特综合征相关	139	ARL13B	17711-1-AP	PAb	ELISA, WB, IP, IF, IHC
纤毛标记物	115	IFT88	13967-1-AP	PAb	ELISA, WB, IP, IHC, IF
纤毛基体标记物	2	gamma tubulin	15176-1-AP	PAb	ELISA, IF, IHC, IP, WB
		gamma tubulin	66320-1-Ig	MAb	ELISA, IF, WB
IFT 家族成员	20	IFT20	13615-1-AP	PAb	ELISA, IF, IHC, IP, WB

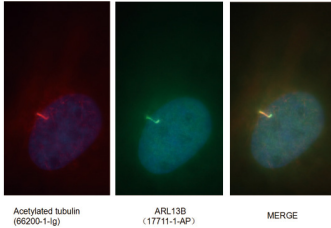


## 纤毛抗体

### ARL13B Antibody (Cat.No.17711-1-AP)

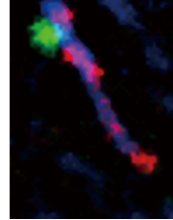
139 Publications

KD/KO validated



Immunofluorescent images of MDCK cells stained with ARL13B rabbit pAb (17711-1-AP) and acetylated tubulin mouse mAb (66200-1-ig) at dilution of 1:50

Basal body/ARL13B/cilia



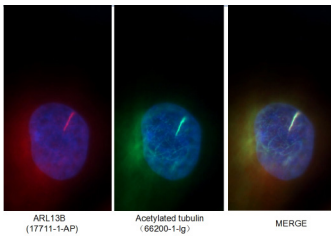
Mouse embryonic fibroblasts

IF result from Dr. Corbit, Kevin. anti-ARL13B(17711-1-AP) mark the cilium of Mouse embryonic fibroblasts.

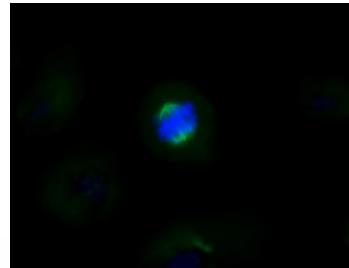
- ◆ **特异性验证** Knockdown,Knockout
- ◆ **应用检测全** ELISA, IF, IHC, IP, WB
- ◆ **适用物种多** human, mouse, rat, dog, pig, sheep, Xenopus, Zebrafish
- ◆ **被Cell、Nat Cell Biol 封面文章引用**

### Acetylated Tubulin(Lys40) Antibody (Cat.No.66200-1-Ig)

4 Publications



Immunofluorescent analysis of MDCK cells using 66200-1-Ig (TUBA1A(ace-40Lys) Antibody) at dilution of 1:50 and Alexa Fluor 488-conjugated AffiniPure GoatAnti-Rabbit IgG(H+L)

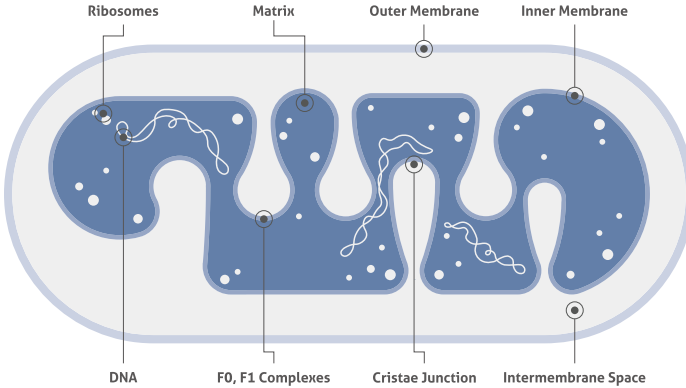


Immunofluorescent analysis of MDCK cells using 66200-1-Ig (TUBA1A(ace-40Lys) Antibody) at dilution of 1:50 and Alexa Fluor 488-conjugated AffiniPure GoatAnti-Rabbit IgG(H+L)

- ◆ **应用检测全** ELISA, IF, IHC, WB
- ◆ **适用物种多** human, mouse, rat, dog, pig
- ◆ **特异性强** 定位准确

## 线粒体

人类体细胞中除了红细胞，其他所有细胞均含有线粒体，它们是真核细胞内的重要细胞器。线粒体支持和参与了许多重要的细胞功能，如：能量转换，介导代谢，保持离子稳态，脂质、核酸和氨基酸的合成及细胞增殖和启动细胞凋亡等。线粒体 DNA 是细胞内唯一的核外遗传物质，与肿瘤发生的相关性也已得到肯定。



## 部分精选抗体

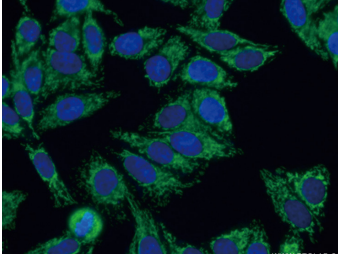
	文献数量	靶标	货号	类型	应用
线粒体分裂	29	MFF	17090-1-AP	PAb	ELISA,WB,IHC,IF,IP
	16	SMCR7L	20164-1-AP	PAb	ELISA,WB,IHC,IF,IP
	33	FIS1	10956-1-AP	PAb	ELISA,WB,IHC,IF,IP
线粒体嵴形态	18	Mitofilin	10179-1-AP	PAb	ELISA,WB,IHC,IF,FC
线粒体自噬	27	VDAC1	10866-1-AP	PAb	ELISA,WB,IHC,IF,IP
	18	MFN2	12186-1-AP	PAb	ELISA,WB,IHC,IF,IP
线粒体蛋白转运	27	TOM20	11802-1-AP	PAb	ELISA,WB,IHC,IF,FC,IP
线粒体脂代谢	14	ECHS1	11305-1-AP	PAb	ELISA,WB,IHC,IP
	36	CPT1A	15184-1-AP	PAb	ELISA,WB,IHC,IF,IP
	10	MTCO2	55070-1-AP	PAb	ELISA,WB,IHC,IF,FC
线粒体呼吸链复合物	34	COXIV	11242-1-AP	PAb	ELISA,WB,IHC,IF,IF,FC
	14	ATP5A1	14676-1-AP	PAb	ELISA,WB,IHC,IF
	12	NDUFS1	12444-1-AP	PAb	ELISA,WB,IHC,IF

## 线粒体抗体

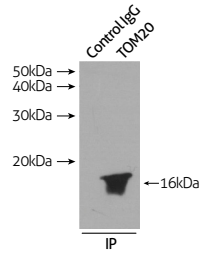
### TOM20 Antibody (Cat.No.11802-1-AP)

27 Publications

KD/KO validated



Immunofluorescent analysis of (4% PFA) fixed HepG2 cells using 11802-1-AP(TOM20 Antibody) at dilution of 1:50 and Alexa Fluor 488-conjugated AffiniPure Goat Anti-Rabbit IgG(H+L)



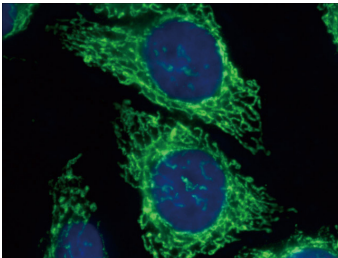
IP Result of anti-TOM20 (IP:11802-1-AP, 3ug; Detection:11802-1-AP 1:2000) with HEK-293 cells lysate 2400ug.

- ◆ 特异性验证 Knockdown
- ◆ 应用检测全 ELISA, FC, IF, IHC, IP, WB
- ◆ 适用物种多 human, mouse, rat,

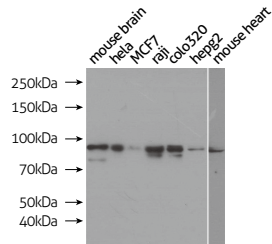
### Mitofilin Antibody (Cat.No.10179-1-AP)

18 Publications

KD/KO validated



Immunofluorescent analysis of (10% Formaldehyde) fixed HeLa cells using 10179-1-AP(IMMT Antibody) at dilution of 1:50 and Alexa Fluor 488-conjugated AffiniPure Goat Anti-Rabbit IgG(H+L)

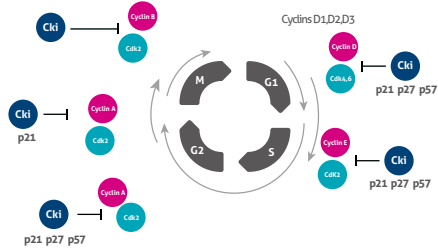


WB result of 10179-1-AP(IMMT antibody) at dilution of 1:1000.

- ◆ 特异性验证 Knockdown
- ◆ 应用检测全 ELISA, FC, IF, IHC, IP, WB
- ◆ 适用物种多 human, mouse, hamster, rat

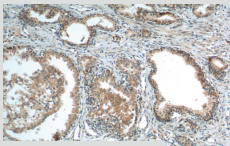
# 细胞周期

细胞以分裂的方式进行增殖，是生物体的重要生命特征。细胞周期就是细胞从一次分裂完成开始到下一次分裂结束所经历的全过程。Cyclin 家族和 CDK 家族基因穿梭在整个细胞周期过程中，发挥着重要的调控作用。

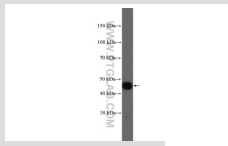


## 部分精选抗体

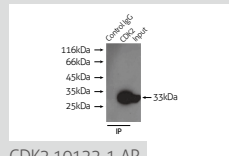
	文献数量	靶标	货号	类型	应用
Cyclins	99	Cyclin D1	60186-1-Ig	MAb	ELISA, IHC, WB
	29	Cyclin B1	55004-1-AP	PAb	ELISA, WB, IP, IHC, IF
	29	Cyclin E1	11554-1-AP	PAb	ELISA, WB, FC
CDKs	32	CDK4	11026-1-AP	PAb	ELISA, WB, IP, IHC, IF, FC
	26	CDK2	10122-1-AP	PAb	ELISA, WB, IP, IHC, IF, FC
	22	CDK1-Specific	19535-1-AP	PAb	ELISA, WB, IHC, IF
	16	CDK6	14052-1-AP	PAb	ELISA, WB, IP, IHC, IF



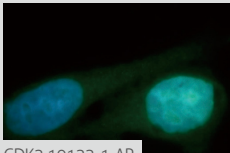
Cyclin B1 55004-1-AP



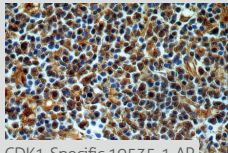
Cyclin E1 11554-1-AP



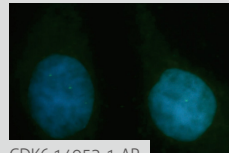
CDK2 10122-1-AP



CDK2 10122-1-AP



CDK1-Specific 19535-1-AP



CDK6 14052-1-AP

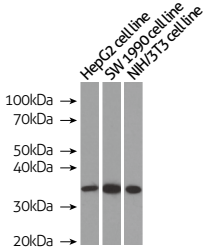


## 细胞周期抗体

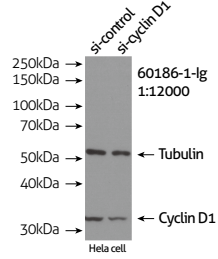
### Cyclin D1 Antibody (Cat.No.60186-1-Ig)

99 Publications

KD/KO validated



Western blot of Cyclin D1 in HepG2, SW 1990 and NIH/3T3 cell lines with 60186-1-Ig at dilution of 1:10000 incubated at room temperature for 1.5 hours

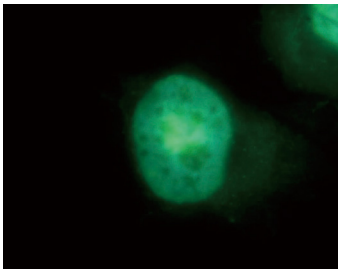


WB result of Cyclin D1 antibody (60186-1-Ig, 1:12,000) with si-Control and si-Cyclin D1 transfected HeLa cells.

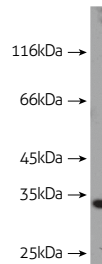
- ◆ 特异性验证 RNA interference
- ◆ 应用检测多 ELISA, IHC, WB
- ◆ 适用物种多 human,mouse,zebrafish
- ◆ 效价高 WB推荐稀释比 1:2000-1:10000

### CDK4 Antibody (Cat.No.11026-1-AP)

32 Publications



Immunofluorescent analysis of MCF-7 cells, using CDK4 antibody 11026-1-AP at 1:50 dilution and FITC-labeled donkey anti-rabbit IgG(green). Blue pseudocolor = DAPI (fluorescent DNA dye)

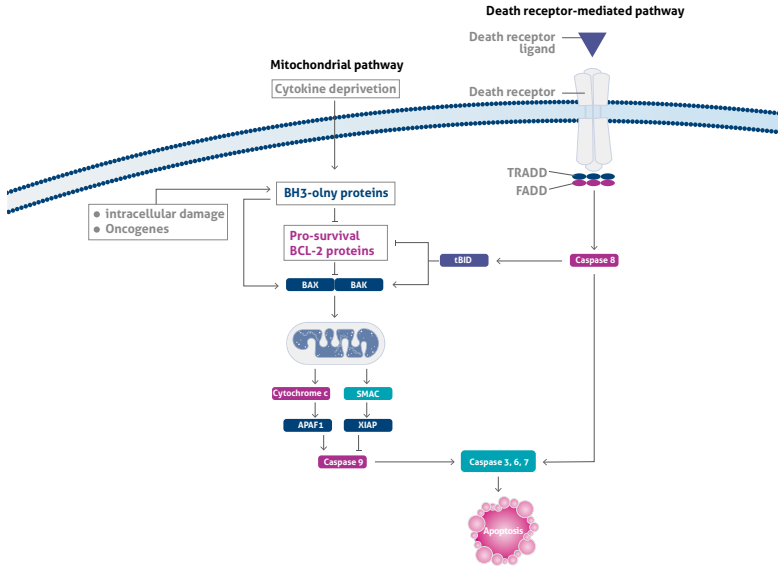


HeLa cells were subjected to SDS PAGE followed by western blot with 11026-1-AP(CDK4 antibody) at dilution of 1:1000 incubated at room temperature for 1.5 hours.

- ◆ 应用检测全 ELISA, FC, IF, IHC, IP, WB
- ◆ 适用物种多 human, mouse, rat, zebrafish

# 凋亡

细胞凋亡是为了维持内环境稳定，由基因控制的细胞自主有序的死亡。凋亡涉及一系列基因的激活、表达以及调控等作用，如 caspase 家族、BCL-2 家族等。



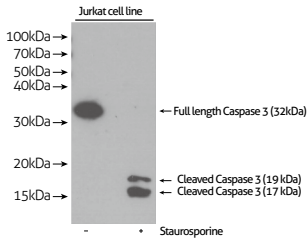
## 部分精选抗体列表

	文献数量	靶标	货号	类型	应用
caspase家族		Caspase3	66470-1-Ig	MAb	ELISA, WB, IHC
	1	Caspase3	66470-2-Ig	MAb	ELISA, IF, IHC, WB
	157	Caspase3	19677-1-AP	PAb	ELISA, WB, IHC, IF, IP
	54	Caspase8	13423-1-AP	PAb	ELISA, WB, IP, IHC, IF
	6	Caspase8	66093-1-Ig	MAb	ELISA, WB, IP, IF, IHC
	115	Caspase9	10380-1-AP	PAb	ELISA, WB, IHC, IF, IP, FC
BCL-2家族	4	Caspase9	66169-1-Ig	MAb	ELISA, WB, IP, IF, IHC
	237	BCL2	12789-1-AP	PAb	ELISA, WB, FC, IP, IHC, IF
	8	BCL2	60178-1-Ig	MAb	ELISA, WB, FC, IP, IHC
	288	BAX	50599-2-Ig	PAb	ELISA, WB, IP, IF, IHC, FC
	7	BAX	60267-1-Ig	MAb	ELISA, WB, IF, IHC

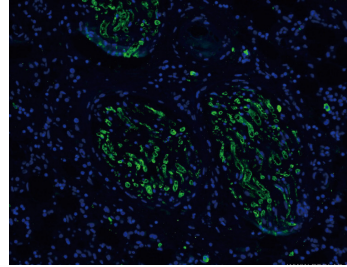
## 凋亡抗体

### Caspase 3 Antibody (Cat.No.66470-2-Ig)

1 Publications



Immunohistochemistry of paraffin-embedded human breast cancer tissue slide using 66470-2-Ig(CASP3 antibody) at dilution of 1:4000 (under 10x lens) heat mediated antigen retrieved with Tris-EDTA buffer(pH9).

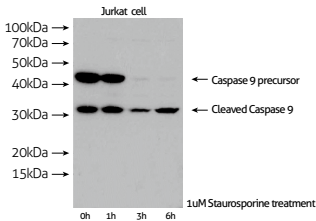


Immunofluorescent analysis of (4% PFA) fixed human breast cancer tissue using 66470-2-Ig(CASP3 antibody) at dilution of 1:100 and Alexa Fluor 488-conjugated AffiniPure Goat Anti-Mouse IgG(H+L)

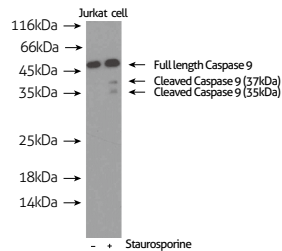
- ◆ 应用检测多 ELISA, IF, IHC, WB
- ◆ 适用物种多 Human, mouse, rat
- ◆ 效价高 WB推荐稀释度 1:1000-1:8000
- ◆ 特异性强 可识别caspase 3 蛋白的前体与剪切体

### Caspase 9/P35/P10 Antibody (Cat.No.10380-1-AP)

115 Publications



Staurosporine treated Jurkat cells were subjected to SDS PAGE followed by western blot with 10380-1-AP (Caspase 9/p35/p10 antibody) at dilution of 1:300 incubated at room temperature for 1.5 hours

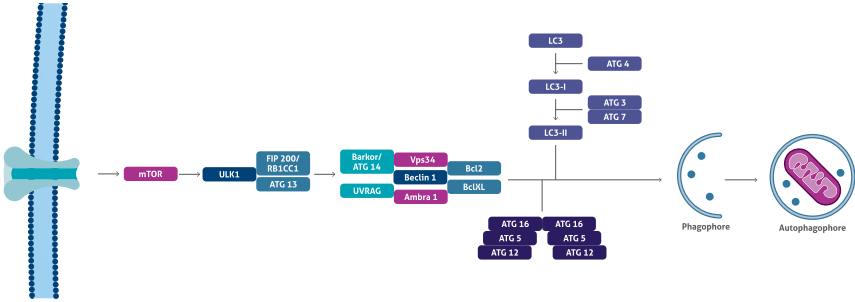


Staurosporine treat Jurkat cells were subjected to SDS PAGE followed by western blot with 10380-1-AP(Caspase 9/p35/p10 antibody) at dilution of 1:300 incubated at room temperature for 1.5 hours

- ◆ 应用检测全 ELISA, FC, IF, IHC, IP, WB
- ◆ 适用物种多 human, mouse, rat, hamsters, sheep
- ◆ 特异性强 可识别caspase 9 蛋白的前体与剪切体

# 自噬

自噬是细胞内的一种“自食”现象。在哺乳动物的自噬体形成中，由 ATG 家族和 LC3 参与组成的两条泛素样蛋白加工修饰过程：Atg12 结合过程和 LC3 修饰过程起着至关重要的作用。



## 部分精选抗体

	文献数量	靶标	货号	类型	应用
自噬标记物	27	LC3	12135-1-AP	PAb	ELISA, IF, WB
	24	LC3B-Specific	18725-1-AP	PAb	ELISA, IF, IHC, FC, WB
	13	LC3A/B	66139-1-Ig	MAB	ELISA, IHC, WB, FC
	5	LC3	14600-1-AP	PAb	ELISA, FC, IF, IHC, IP, WB
	70	P62/SQSTM1	18420-1-AP	PAb	ELISA, WB, IHC, IP, FC, IF
Atg 家族	2	P62/SQSTM1	66184-1-Ig	MAB	ELISA, WB, IF, IHC
	26	ATG5	10181-2-AP	PAb	ELISA, WB, IHC, IF
	20	GABARAPL1	11010-1-AP	PAb	ELISA, IP, IHC, IF, FC
	48	Beclin 1	11306-1-AP	PAb	ELISA, IP, WB, IF, IHC

LC3 12135-1-AP

LC3 12135-1-AP

LC3B-Specific 18725-1-AP

GABARAPL1-Specific 11010-1-AP

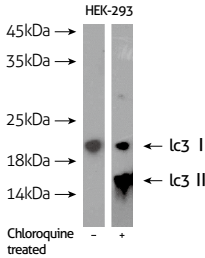
Beclin 1 11306-1-AP

ATG5 10181-2-AP

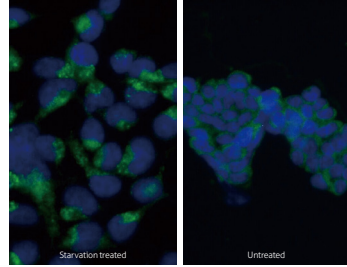
## 自噬抗体

### LC3 Antibody (Cat.No.14600-1-AP)

5 Publications



Chloroquine treated HEK-293 cells were subjected to SDS PAGE followed by western blot with 14600-1-AP(LC3 Antibody) at dilution of 1:1000 incubated at room temperature for 1.5 hours



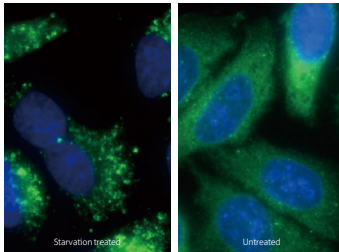
Immunofluorescent analysis of Starvation treated HEK-293 cells using 14600-1-AP(LC3 Antibody) at dilution of 1:50 and Alexa Fluor 488-conjugated AffiniPure Goat Anti-Rabbit IgG(H+L). 20 mM chloroquine was used to block the autophagy flux.

- ◆ 应用检测多 ELISA, FC, IF, IHC, IP, WB
- ◆ 适用物种多 human, mouse, rat
- ◆ 特异性强 可识别LC3- I 和 LC3- II

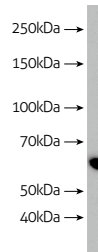
### P62/SQSTM1 Antibody (Cat.No.18420-1-AP)

70 Publications

KD/KO validated



Immunofluorescent analysis of (-20C Ethanol) fixed Starvation treated HepG2 cells using 18420-1-AP(P62,SQSTM1 Antibody) at dilution of 1:50 and Alexa Fluor 488-conjugated AffiniPure Goat Anti-Rabbit IgG(H+L)

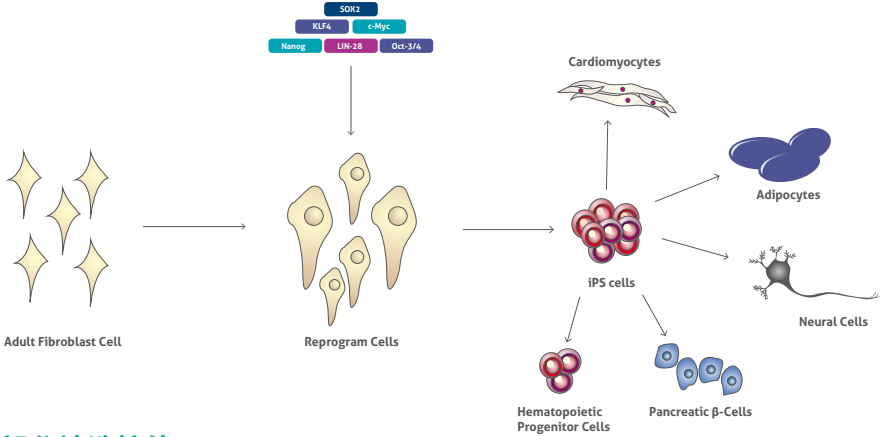


HEK-293 cells were subjected to SDS PAGE followed by western blot with 18420-1-AP(SQSTM1 antibody) at dilution of 1:1000 incubated at room temperature for 1.5 hours

- ◆ 特异性验证 Knockdown
- ◆ 应用检测多 ELISA, FC, IF, IHC, IP, WB

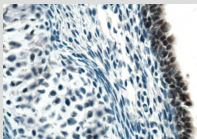
# 干细胞

干细胞是胚胎及某些器官中具有自我复制和多向分化潜能的原始细胞，是重建、修复病损或衰老组织、器官功能的理想种子细胞。干细胞的研究与应用几乎涉及所有生命科学和生物医学领域，是当今生命科学领域的热点和重点。

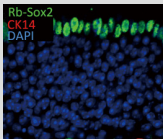


## 部分精选抗体

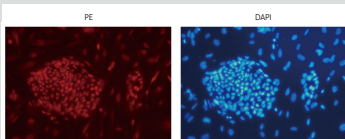
靶标	文献数量	货号	类型	应用
LIN28	30	11724-1-AP	PAb	ELISA,WB,IHC,IF,IP
Lin28A-specific	2	16177-1-AP	PAb	ELISA,WB,IHC
Lin28B-specific	7	16178-1-AP	PAb	ELISA,WB,IHC,IF
OCT4	30	11263-1-AP	PAb	ELISA,WB,IHC,IF
		60242-1-Ig	MAb	ELISA,WB,IHC
c-MYC	35	10828-1-AP	PAb	ELISA,WB,IHC,IF,IP
		10057-1-AP	PAb	ELISA,WB
		11064-1-AP	PAb	ELISA,WB,IHC,IF
SOX2	4	20118-1-AP	PAb	ELISA,WB,IHC, IF
		66411-1-Ig	MAb	ELISA,WB,IHC, IF
NANOG	8	14295-1-AP	PAb	ELISA,WB,IHC,IF
KLF4	15	11880-1-AP	PAb	ELISA,WB,IHC,IF,IP



SOX2 11064-1-AP



SOX2 11064-1-AP



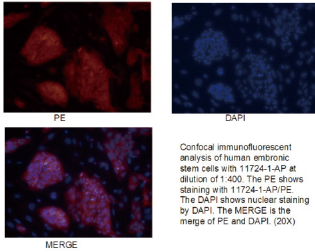
KLF4 11880-1-AP

## 干细胞抗体

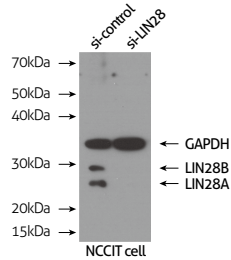
### LIN28 Antibody (Cat.No.11724-1-AP)

30 Publications

KD/KO validated



Confocal immunofluorescent analysis of human embryonic stem cells with 11724-1-AP at dilution of 1:200. The PE shows staining with 11724-1-AP/PE. The DAPI shows nuclear staining by DAPI. The MERGE is the merge of PE and DAPI. (10X)



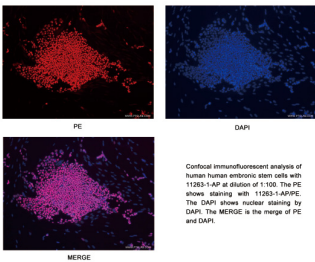
WB data of LIN28 antibody (11724-1-AP, 1:500) with si-control and si-LIN28 transfected NCCIT cells.

- ◆ 特异性验证 RNA interference
- ◆ 应用检测多 ELISA, IF, IHC, IP, WB
- ◆ 适用物种多 human, mouse, rat
- ◆ 多次被高分文章 (IF > 20) 引用 Nature, Nat Genet, Cell Stem Cell等

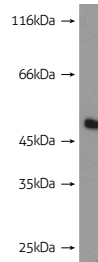
### OCT4 Antibody (Cat.No.11263-1-AP)

30 Publications

KD/KO validated



Confocal immunofluorescent analysis of human embryonic stem cells with 11263-1-AP at dilution of 1:100. The PE shows staining with 11263-1-AP/PE. The DAPI shows nuclear staining by DAPI. The MERGE is the merge of PE and DAPI.

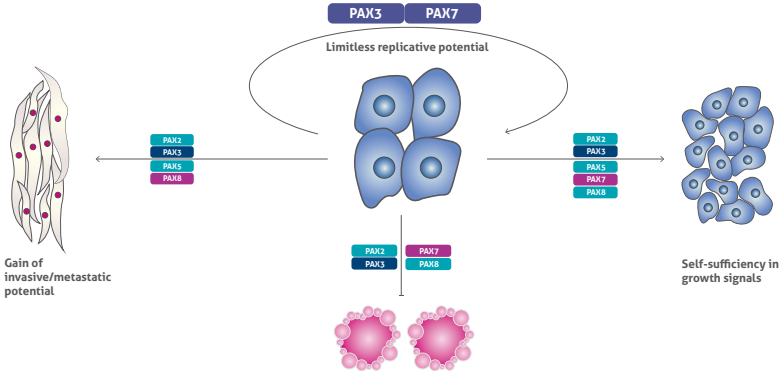


Mouse brain tissue were subjected to SDS PAGE followed by western blot with 11263-1-AP (OCT4 antibody) at dilution of 1:1000 incubated at room temperature for 1.5 hours

- ◆ 特异性验证 Knockdown
- ◆ 应用检测多 ELISA, IF, IHC, WB
- ◆ 适用物种多 human, mouse, rat

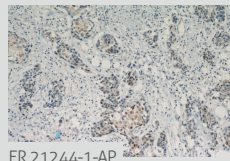
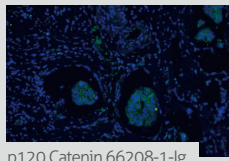
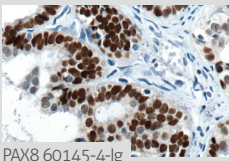
## 肿瘤

随着对肿瘤细胞信号传导途径不断深入的研究，人们对肿瘤细胞内部的癌基因以及抗癌基因的相互作用越来越清楚。利用肿瘤相关抗体可以完成对肿瘤的鉴别和诊断工作，也有助于对肿瘤机制做进一步的研究。



## 部分精选抗体

	文献数量	靶标	货号	类型	应用
卵巢浆液性癌，透明细胞癌和甲状腺癌标记物	201	PAX8	10336-1-AP	PAb	ELISA, WB, IP, FC, IF, IHC
	1	PAX8	60145-4-Ig	MAb	ELISA, WB, IHC
乳腺癌浸润性小叶癌标记物		p120 Catenin	66208-1-Ig	MAb	ELISA, WB, IHC, IF
乳腺癌预后标记物	12	ER	21244-1-AP	PAb	ELISA, IF, IHC, WB
		HER2/ErbB2	60311-1-Ig	MAb	ELISA, IHC, FC
		PR	66300-1-Ig	MAb	ELISA, IHC
胰腺导管腺癌标记物	1	Claudin 18	66167-1-Ig	MAb	ELISA, IHC, IP



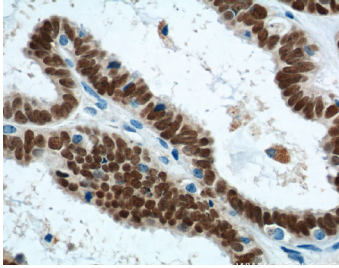


## 🔬 肿瘤抗体 🔬

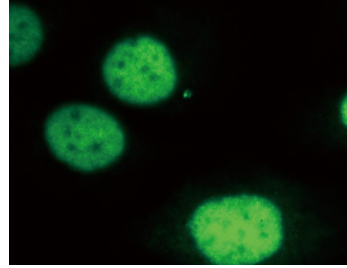
### PAX8 Antibody (Cat.No.10336-1-AP)

201 Publications

KD/KO validated



Immunohistochemistry of paraffin-embedded human ovary tumor tissue slide using 10336-1-AP (PAX8 Antibody) at dilution of 1:1200 (under 40x lens). heat mediated antigen retrieved with Tris-EDTA buffer(pH9).

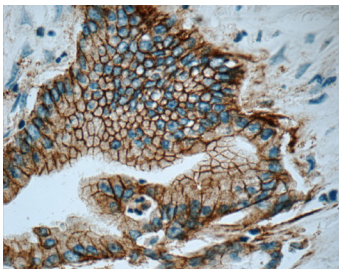


Immunofluorescent analysis of (4% PFA) fixed SKOV-3 cells using 10336-1-AP (PAX8 antibody) at dilution of 1:100 and Alexa Fluor 488-conjugated AffiniPure Goat Anti-Rabbit IgG(H+L)

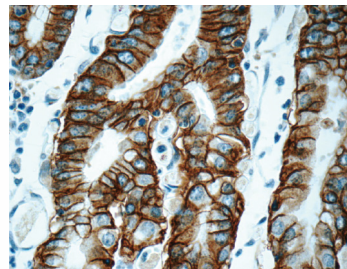
- ◆ 特异性验证 Knockdown
- ◆ 应用检测全 ELISA, FC, IF, IHC, IP, WB
- ◆ 适用物种多 human, mouse, rat, bovine, zebrafish
- ◆ 2012年被NordiQC ( 北欧免疫组化质量控制机构 ) 验证

### Claudin 18 Antibody (Cat.No.66167-1-Ig)

1 Publications



Immunohistochemistry of paraffin-embedded human pancreas cancer tissue slide using 66167-1-Ig (CLDN18 Antibody) at dilution of 1:600 (under 40x lens).

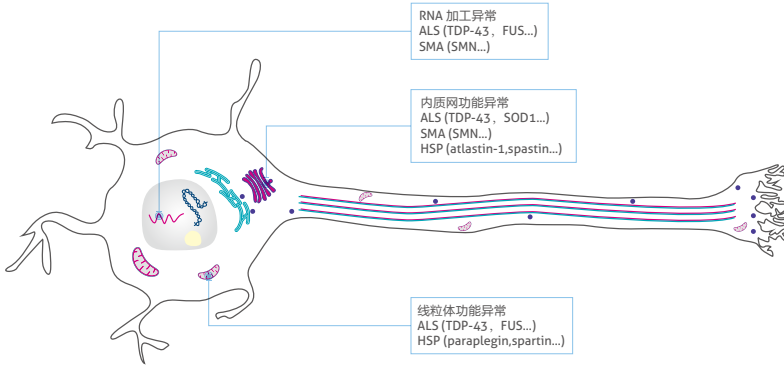


Immunohistochemistry of paraffin-embedded human stomach tissue slide using 66167-1-Ig (CLDN18 Antibody) at dilution of 1:600 (under 40x lens)

- ◆ 应用检测多 ELISA, IHC, IP
- ◆ 适用物种多 human, mouse
- ◆ 特异性强 定位准确

# 神经生物学

神经生物学是一门研究神经系统结构和功能的科学。大脑的结构和功能是生命科学研究中最具有挑战性的课题。



## 神经细胞标记物

神经元是大脑的基本信号组件。利用各种细胞组分的抗体，研究者能够识别功能不同的各类型神经细胞，从而从整体上研究大脑是如何工作的。

## 部分精选抗体

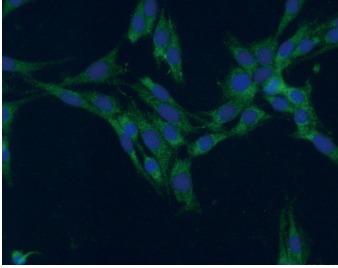
	文献数量	靶标	货号	类型	应用
星形胶质细胞标记物	28	GFAP	16825-1-AP	PAb	ELISA, WB, IHC, IF
	7	GFAP	60190-1-Ig	MAb	ELISA, WB, IHC, IP, IF
小胶质细胞标记物	49	IBA1	10904-1-AP	PAb	ELISA, WB, IP, IHC, IF
前体细胞标记物	28	DACH1	10914-1-AP	PAb	ELISA, IP, WB, IF, IHC
	1	Nestin	66259-1-Ig	MAb	ELISA, WB, IHC, IF
神经元标记物		TUBB3-specific	66375-1-Ig	MAb	ELISA, IF, IHC, WB
	21	MAP2	17490-1-AP	PAb	ELISA, FC, IF, IHC, IP, WB
	2	NF-L	12998-1-AP	PAb	ELISA, IF, IHC, IP, WB
		NF-L	60189-1-Ig	MAb	ELISA, IHC, WB
多巴胺神经元标记物	1	NF-M-Specific	20664-1-AP	PAb	ELISA, IF, IHC, IP, WB
		TH	25859-1-AP	PAb	ELISA, WB, IP, IHC, IF
少突胶质细胞标记物	6	TH	66334-1-Ig	MAb	ELISA, IF, IHC, WB
		OLIG2	13999-1-AP	PAb	ELISA, IF, IHC, IP, WB
海马 CA1 标记物	23	WFS1	11558-1-AP	PAb	ELISA, colP, IF, IHC, IP, WB

## 神经细胞标记物抗体

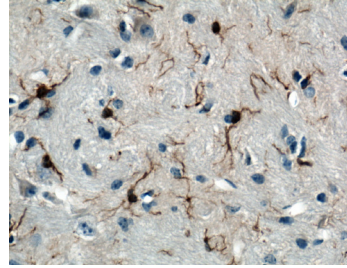
### IBA1 Antibody (Cat.No.10904-1-AP)

49 Publications

KD/KO validated



Immunofluorescent analysis of (-20°C Ethanol) fixed C6 cells using 10904-1-AP( IBA1 Antibody) at dilution of 1:50 and Alexa Fluor 488-conjugated AffiniPure Goat Anti-Rabbit IgG(H+L).

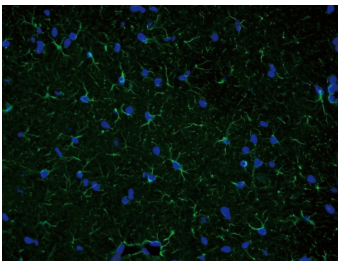


Immunohistochemistry of paraffin-embedded mouse brain tissue slide using 10904-1-AP( IBA1 Antibody) at dilution of 1:200 (under 40x lens). heat mediated antigen retrieved with Tris-EDTA buffer(pH9).

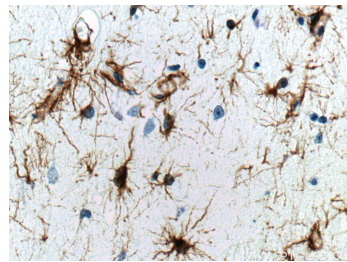
- ◆ 特异性验证 Knockdown, knockout
- ◆ 应用检测全 ELISA, IHC, IP
- ◆ 适用物种多 human, mouse, rat, hamsters

### GFAP Antibody (Cat.No.16825-1-AP)

28 Publications



Immunofluorescent analysis of (4% PFA) fixed mouse brain tissue using 16825-1-AP( GFAP Antibody) at dilution of 1:100 and Alexa Fluor 488-conjugated AffiniPure Goat Anti-Rabbit IgG(H+L).



Immunohistochemistry of paraffin-embedded human brain tissue slide using 16825-1-AP( GFAP Antibody) at dilution of 1:2000 (under 40x lens).

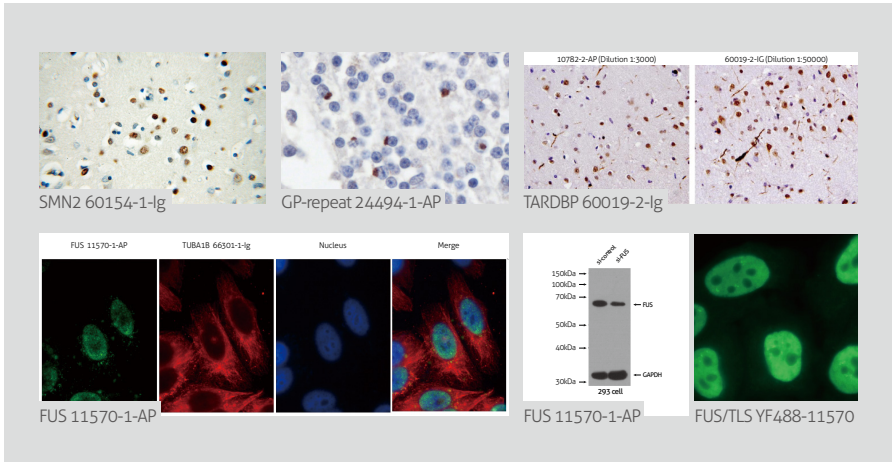
- ◆ 应用检测多 ELISA, IHC, IP
- ◆ 适用物种多 human, mouse, rat, hamsters

## 神经退行性疾病

随着老龄化加剧，神经退行性疾病患病率也节节攀升。神经退行性疾病是一类大脑和脊髓的神经细胞丧失的疾病状态。常见的神经退行性疾病包括脊髓侧索硬化症（Amyotrophic Lateral Sclerosis, ALS），额颞叶痴呆（Frontotemporal dementia,FTLD），脊髓型肌萎缩症（Spinal Muscular Atrophy, SMA），阿茨海默症（Alzheimer Disease, AD）等。

## 部分精选抗体

	文献数量	靶标	货号	类型	应用
肌萎缩性侧索硬化症 (ALS)	810	TDP-43	10782-2-AP	PAb	ELISA, WB, IHC, IP, FC, IF
	39	TDP-43 (Human Specific)	60019-2-Ig	MAb	ELISA, FC, IF, IHC, IP, WB
	62	TDP-43 (C-Terminal)	12892-1-AP	PAb	ELISA, IF, IHC, IP, WB, WB
	1	Phospho(403/404)-TDP43	66079-1-Ig	MAb	ELISA, WB, IF
	32	FUS/TLS	11570-1-AP	PAb	ELISA, IP, WB, FC, IHC, IF
	9	FUS/TLS	60160-1-Ig	MAb	ELISA, IF, IHC, IP, WB
		FUS/TLS	YF488-11570	PAb	ELISA, IF
脊髓性肌肉萎缩症 (SMA)		SMN (Human-Specific)	60154-1-Ig	MAb	ELISA, WB, IHC, IP, IF
额颞叶痴呆 (FTLD) & 肌萎缩性侧索硬化症 (ALS)	8	GR Repeat	23978-1-AP	PAb	ELISA, IF, IHC, WB
	6	PR Repeat	23979-1-AP	PAb	ELISA, WB, IHC, IF
	5	GP Repeat	24494-1-AP	PAb	ELISA, WB, IHC, IF
	3	GA Repeat	24492-1-AP	PAb	ELISA, WB, IHC, IF

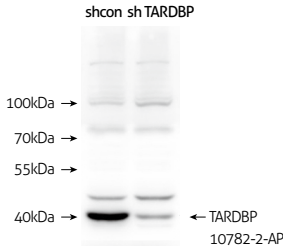


## 🧬 神经退行性疾病抗体 🧬

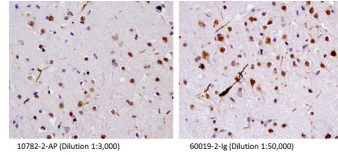
### TDP-43 Antibody (Cat.No.10782-2-AP)

810 Publications

KD/KO validated



A549 cells (shcontrol and shRNA of TDP43) were subjected to SDS PAGE followed by western blot with 10782-2-AP (TARDBP antibody) at dilution of 1:1000. (Data provided by Angran Biotech).



40X of FTLD-U case stained by 10782-2-AP and 60019-2-Ig, showing dystrophic neurites. (Figs were provided by Linda K. Kwong).

◆ **特异性验证** RNA interference

◆ **应用检测多** ELISA, ChIP, CoIP, FC, IF, IHC, IP, RIP, WB

◆ **适用物种多** 覆盖 14 种以上

动物: human, mouse, rat, chicken, dog, hamster, horse, monkey,  
zebrafish, C. elegans, Drosophila, fly, worm

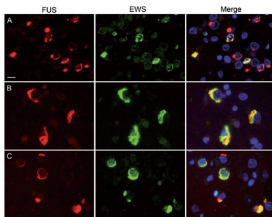
真菌: Yeast

◆ 被Cell, Nature, Science 文章引用; 被Brain, Mol cell封面文章引用

### FUS/TLS Antibody (Cat.No.60160-1-Ig)

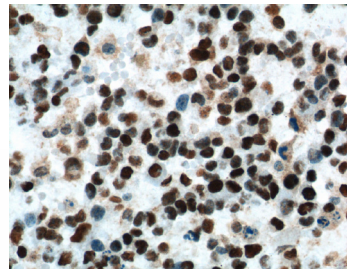
9 Publications

KD/KO validated



Colocalization of EWS and FUS in FTLD-FUS inclusions. Double-label immunofluorescence for FUS (red) and EWS (green), with DAPI staining of nuclei in the merged images. In atypical FTLD-U, only a subset of FUS-positive neuronal cytoplasmic and intranuclear inclusions were stained for EWS (A). In contrast, robust colabeling for EWS and FUS was observed in most inclusions in NFD (B) and BRBD (C).

IF result of McAB FUS(60160-1-Ig) in the Paper "FET proteins TAF15 and EWS are selective markers that distinguish FTLD with FUS pathology from amyotrophic lateral sclerosis with FUS mutations" from Manuela Neumann.



Immunohistochemistry of paraffin-embedded human glioma tissue slide using 60160-1-Ig( FUS/TLS Antibody) at dilution of 1:1000 (under 40X lens), heat mediated antigen retrieved with Tris-EDTA buffer(pH9).

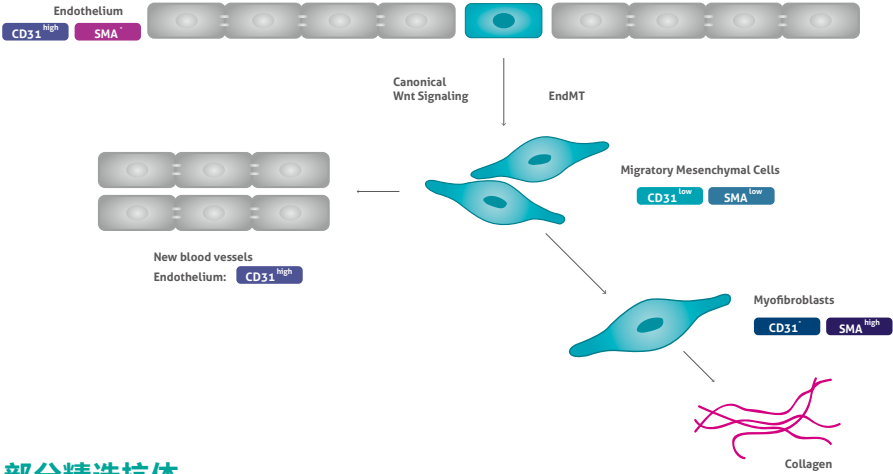
◆ **特异性验证** Konckdown

◆ **应用检测多** ELISA, IF, IHC, IP, WB

◆ **适用物种多** human, mouse, Drosophila

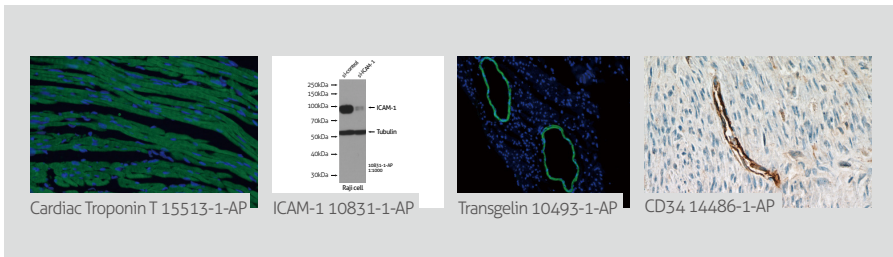
# 心血管研究

心脑血管疾病是心脏血管和脑血管疾病的统称，泛指由于高脂血症、血液黏稠、动脉粥样硬化、高血压等所导致的心脏、大脑及全身组织发生的缺血性或出血性疾病，具有高患病率、高致残率和高死亡率的特点。利用心血管相关抗体有助于对心血管疾病机制做进一步深入的研究。



## 部分精选抗体

	文献数量	靶标	货号	类型	应用
内皮细胞标记物	18	ICAM-1	10831-1-AP	PAb	ELISA, FC, IF, IHC, IP, WB
	5	ICAM-1	60299-1-Ig	MAB	ELISA, FC, IF, IHC, WB
	1	CD34	60180-1-Ig	MAB	ELISA, WB, IHC
	6	CD34	14486-1-AP	PAb	ELISA, IF, IHC, WB
平滑肌细胞标记物	23	CD31	11265-1-AP	PAb	ELISA, IP, IHC, WB, FC, IF
	5	ACTA2/smooth muscle actin	23081-1-AP	PAb	ELISA, WB, IHC, IP
	74	ACTA2/smooth muscle actin	14395-1-AP	PAb	ELISA, FC, IF, IHC, IP, WB
	25	transgelin/SM22	10493-1-AP	PAb	ELISA, WB, IHC, IF, FC
心肌细胞标记物	5	Cardiac Troponin T	15513-1-AP	PAb	ELISA, IF, IHC, WB
	2	alpha Actinin	11313-2-AP	PAb	ELISA, IHC, WB, IF

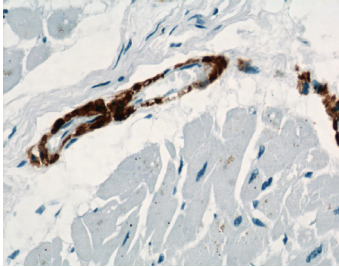


## 心血管研究抗体

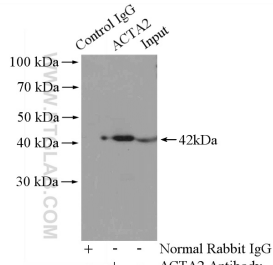
### ACTA2/Smooth Muscle Actin Antibody (Cat.No.23081-1-AP)

5 Publications

#### 平滑肌细胞标记物



Immunohistochemical of paraffin-embedded human heart using 23081-1-AP(ACTA2/smooth muscle actin antibody) at dilution of 1:500 (under 40x lens)



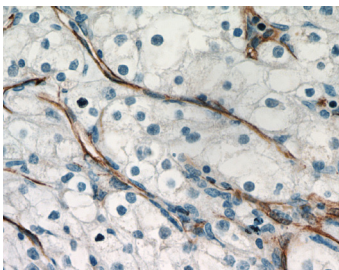
IP Result of anti-a-SMA specific (IP:23081-1-AP, 4ug; Detection:23081-1-AP 1:1000) with mouse heart tissue lysate 3200ug.

- ◆ 应用检测全 ELISA, WB, IP, IHC
- ◆ 适用物种多 human, mouse, rat

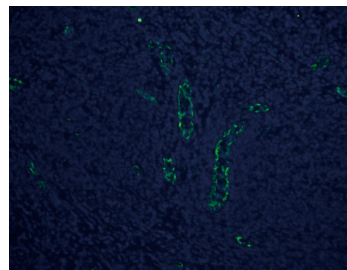
### CD31 Antibody (Cat.No.11265-1-AP)

23 Publications

#### 内皮细胞标记物



Immunohistochemistry of paraffin-embedded human renal cell carcinoma tissue slide using 11265-1-AP( CD31 Antibody) at dilution of 1:400 (under 40x lens)

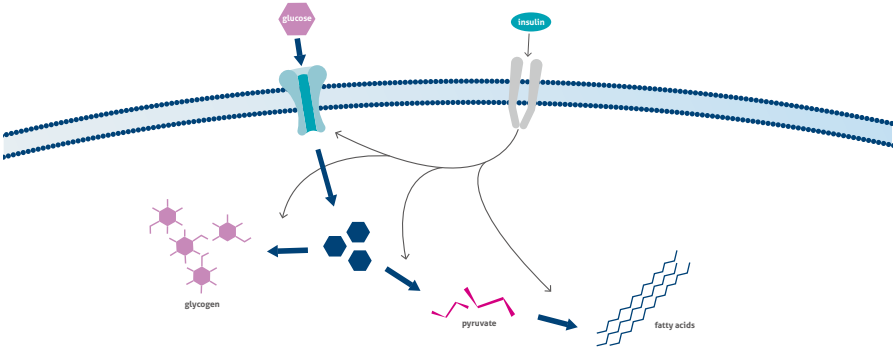


Immunofluorescent analysis of (4% PFA) fixed human tonsillitis tissue using 11265-1-AP( CD31 Antibody) at dilution of 1:50 and Alexa Fluor 488-conjugated AffiniPure Goat Anti-Rabbit IgG(H+L).

- ◆ 应用检测全 ELISA, FC, IF, IHC, IP, WB
- ◆ 适用物种多 human, monkey
- ◆ 特异性强 定位准确

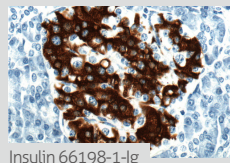
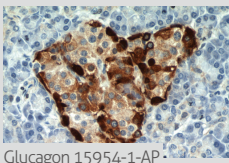
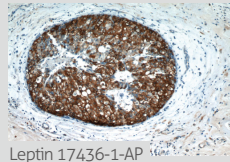
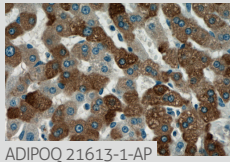
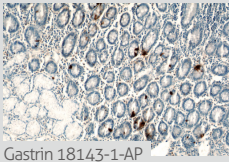
# 内分泌与代谢

内分泌系统是由内分泌腺和某些内分泌细胞组成的一个体内信息传递系统。任何一种内分泌细胞的功能失常所致的一种激素分泌过多或缺乏，均可引起相应的生理代谢变化，如糖和脂类代谢异常，从而引起一系列相关疾病，如糖尿病，肥胖症等。利用内分泌与代谢相关抗体可以帮助科研人员对这类疾病做出有效的诊断和机制研究。



## 部分精选抗体

	文献数量	靶标	货号	类型	应用
肥胖症		Leptin	17436-1-AP	PAb	ELISA, WB, IHC, IF
		ADIPOQ	21613-1-AP	PAb	ELISA, IF, IHC, WB
	9	Insulin	15848-1-AP	PAb	ELISA, WB, IHC, IF
		Insulin	66198-1-Ig	MAb	ELISA, IHC
	1	Glucagon	15954-1-AP	PAb	ELISA, IHC
糖尿病 diabetes		Gastrin	60346-1-Ig	MAb	ELISA, IHC
		Gastrin	18143-1-AP	PAb	ELISA, WB, IHC
		Growth hormone	27079-1-AP	PAb	ELISA, IHC, WB
	2	Perilipin 2	15294-1-AP	PAb	ELISA, WB, IHC, IF



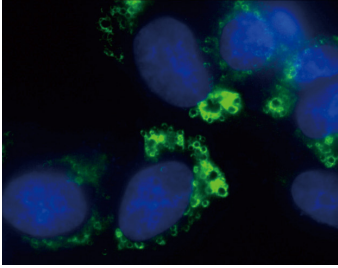


## 内分泌与代谢抗体

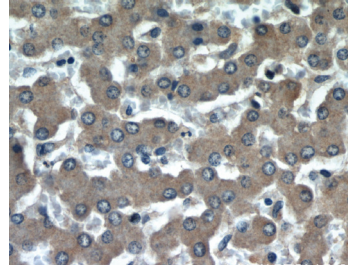
### ADRP/Perilipin 2 Antibody (Cat.No.15294-1-AP)

2 Publications

KD/KO validated



Immunofluorescent analysis of (-20°C Ethanol) fixed Oleic acid treated HeLa cells using 15294-1-AP (ADRP Antibody) at dilution of 1:50 and Alexa Fluor 488-conjugated AffiniPure Goat Anti-Rabbit IgG(H+L)



Immunohistochemical of paraffin-embedded human liver using 15294-1-AP (ADRP antibody) at dilution of 1:50 (under 40x lens)

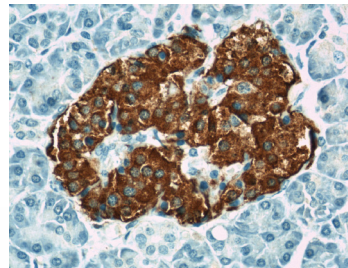
- ◆ 特异性验证 Konckdown
- ◆ 应用检测多 ELISA, IF, IHC, WB
- ◆ 适用物种多 human, mouse, rat

### Insulin Antibody (Cat.No.15848-1-AP)

9 Publications

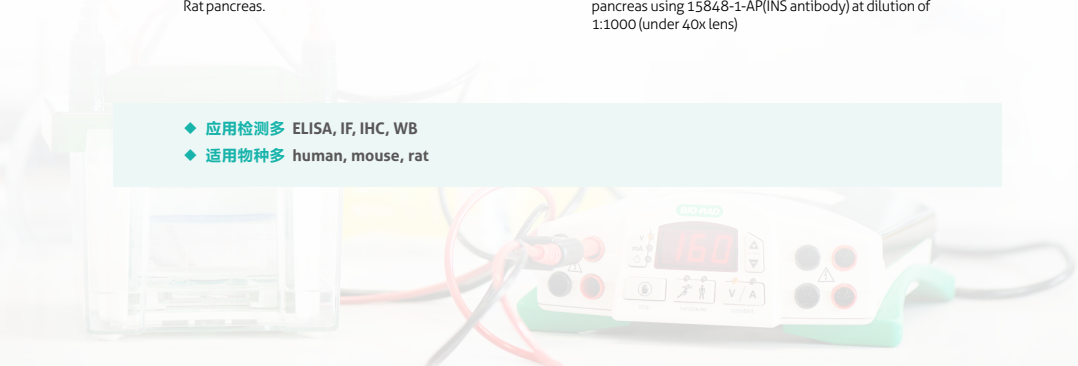


IF result of Insulin antibody (15848-1-AP, 1:500) with Rat pancreas.



Immunohistochemical of paraffin-embedded human pancreas using 15848-1-AP (INS antibody) at dilution of 1:1000 (under 40x lens)

- ◆ 应用检测多 ELISA, IF, IHC, WB
- ◆ 适用物种多 human, mouse, rat



# 免疫学

免疫学涉及免疫识别、应答和调节，以及免疫机制在相关疾病发生发展中的作用，还涉及免疫学技术在疾病诊断、治疗和预防中的应用。近几年人们对各种免疫细胞类和免疫相关分子的了解不断深入并逐步向临床应用转化，尤其是肿瘤免疫治疗更是得到广泛的关注，基础研究与临床应用的关系也日趋密切。



B 细胞



T 细胞



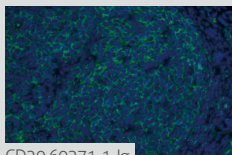
巨噬细胞



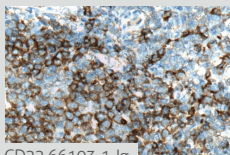
滤泡树突状细胞

## 部分精选抗体列表

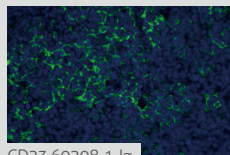
	文献数量	靶标	货号	类型	应用
B 细胞		CD20	60271-1-Ig	MAb	ELISA, FC, IF, IHC, WB
		CD22	66103-1-Ig	MAb	ELISA, WB, IHC
T 细胞	3	CD3e	17617-1-AP	PAb	ELISA, FC, IF, IHC, IP, WB
		CD43	66224-1-Ig	MAb	ELISA, IF, IHC, WB
卵泡树突细胞		CD23	60208-2-Ig	MAb	ELISA, IF, IHC, WB
巨噬细胞	18	CD68	25747-1-AP	PAb	ELISA, FC, IF, IHC, IP, WB
血小板	3	CD42b	12860-1-AP	PAb	ELISA, IHC, WB
		CD41	24552-1-AP	PAb	ELISA, WB, IP, IHC



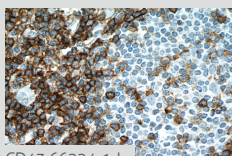
CD20 60271-1-Ig



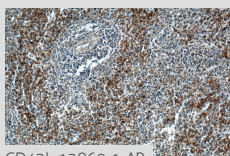
CD22 66103-1-Ig



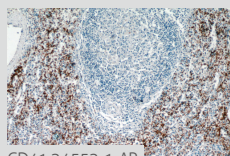
CD23 60208-1-Ig



CD43 66224-1-Ig



CD42b 12860-1-AP

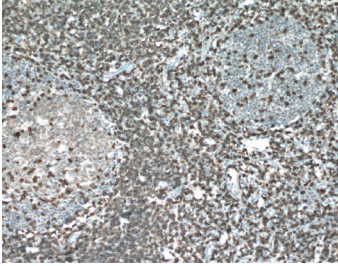


CD41 24552-1-AP

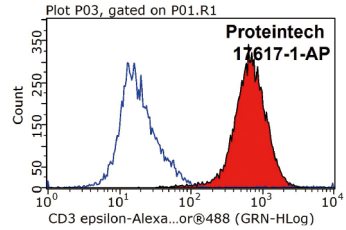
## 免疫学抗体

### CD3 Antibody (Cat.No.17617-1-AP)

3 Publications



Immunohistochemistry of paraffin-embedded human tonsillitis tissue slide using 17617-1-AP( CD3 Antibody) at dilution of 1:200 (under 10x lens). Heat mediated antigen retrieved with Tris-EDTA buffer, pH9.0

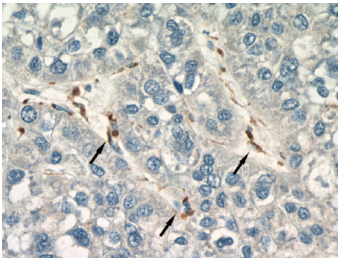


1X10<sup>6</sup> Jurkat cells were stained with 0.5ug CD3 antibody (17617-1-AP, red) and control antibody (blue). Fixed with 90% MeOH blocked with 3% BSA (30 min). Alexa Fluor 488-conjugated AffiniPure Goat Anti-Rabbit IgG(H+L) with dilution 1:1000.

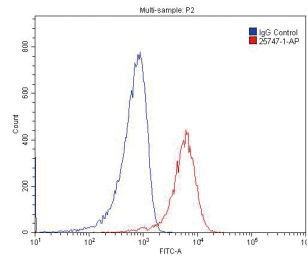
- ◆ 应用检测全 ELISA, IF, IHC, WB
- ◆ 适用物种多 human, pig

### CD68 Antibody (Cat.No.25747-1-AP)

18 Publications



Immunohistochemistry of paraffin-embedded human liver cancer tissue slide using 25747-1-AP( CD68 Antibody) at dilution of 1:200 (under 40x lens) (the arrows show Kupffer cells)



1X10<sup>6</sup> RAW 264.7 cells were stained with 0.2ug CD68 antibody (25747-1-AP, red) and control antibody (blue). Fixed with 4% PFA blocked with 3% BSA (30 min). Alexa Fluor 488-conjugated AffiniPure Goat Anti-Rabbit IgG(H+L) with dilution 1:1500.

- ◆ 应用检测全 ELISA, IF, IHC, WB
- ◆ 适用物种多 human, mouse



## THE BENCHMARK IN ANTIBODIES

### Contact

---

#### North America (HQ)

---

Phone 1-888-478-4522(toll free in USA),

Email [proteintech@ptglab.com](mailto:proteintech@ptglab.com)

---

#### European Office

---

Phone 0044 161 839 3007

Email [europe@ptglab.com](mailto:europe@ptglab.com)

---

#### Chinese Office

---

Phone 027-87531629

400-6900-926

Fax 027-87531627

Email [Proteintech-CN@ptglab.com](mailto:Proteintech-CN@ptglab.com)

---

### Support

---

#### Live Chat

[www.ptglab.com](http://www.ptglab.com)

#### Marketing QQ

4006900926

#### WeChat Official Account

Proteintech Group

#### Blog

[blog.ptglab.com](http://blog.ptglab.com)

---

### Download

You can download this marker and lots like it, including all Proteintech pathway posters at [www.ptglab.com](http://www.ptglab.com)



WeChat Official Account

