

干细胞研究相关抗体

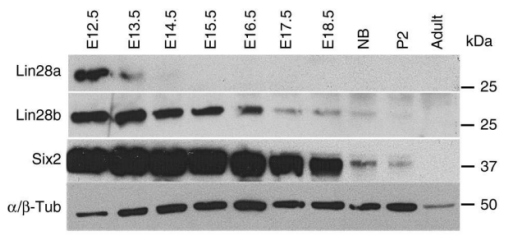
靶标齐全

多重技术验证特异性

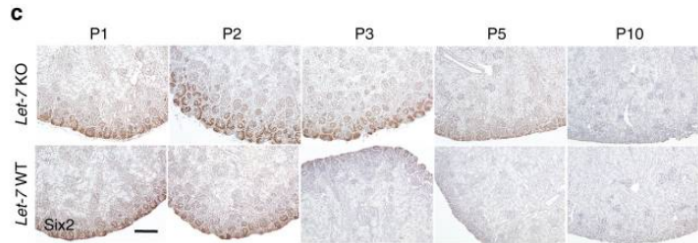
文献推荐

SIX2 Polyclonal antibody

货号: 11562-1-AP 212



Western blot analysis against Lin28a, Lin28b, Six2, and α/β -Tubulin proteins in lysates collected from dissected embryonic day 12.5–18.5 (E12.5–E18.5), newborn (NB), postnatal day 2 (P2), and adult wild-type kidneys.

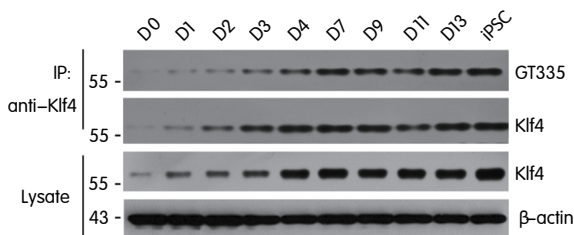


Representative immunohistochemistry staining against Six2, in let-7 KO mice and WT littermates.

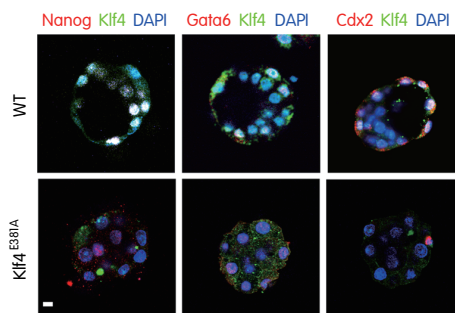
图片源于: Nat Commun.2019 Jan 11;10(1):168. 使用Proteintech SIX2 Polyclonal antibody (11562-1-AP)。

KLF4 Polyclonal antibody

货号: 11880-1-AP 82



MEFs Lysates induced by OSKM for the indicated days were immunoprecipitated with anti-Klf4 antibody and analyzed by immunoblotting with GT335.



Indicated preimplantation embryos from WT and Klf4E381A knock-in mice were stained with cell fate markers (Nanog for epiblast (EPI), Gata6 for primitive endoderm (PrE), and Cdx2 for trophectoderm (TE)) together with Klf4.

图片源于: Nat Commun.2018 Mar 28;9(1):1261. 使用Proteintech KLF4 Polyclonal antibody (11880-1-AP)。

00 参考文献篇数

Proteintech覆盖人类基因组靶标的抗体
超过15万次SCI文献引用



干细胞研究相关抗体

抗体靶标	货号	应用	文献
AFP	14550-1-AP	WB, IP, IHC, IF, FC, CoIP	73
ALDH1A1	15910-1-AP	WB, IP, IHC, IF, FC	85
ALDH1A1	60171-1-Ig	WB, IHC, IF, FC	5
ALDH1A1-specific	22109-1-AP	WB, IP, IHC, IF, FC	6
BCRP,ABCG2	27286-1-AP	WB, IHC	20
Beta Catenin	51067-2-AP	WB, IP, IHC, IF, CoIP, ChIP	466
Beta Catenin	17565-1-AP	WB, IP, IHC, IF	83
Beta Catenin	66379-1-Ig	WB, IP, IHC, IF, CoIP	45
BMI1	10832-1-AP	WB, IP, IHC, IF, CoIP, ChIP	23
BMI1	66161-1-Ig	WB, IP, IHC, IF	7
BMPRIA	12702-1-AP	WB, IP, IF	7
CD13	14553-1-AP	WB, IHC, IF, FC	5
CD13	66211-1-Ig	WB, IHC, IF, FC	5
CD24	18330-1-AP	WB	9
CD24	10600-1-AP	WB	4
CD29	65191-1-Ig	FC	1
CD33	17425-1-AP	WB, IHC, IF, FC	3
CD34	14486-1-AP	WB, IHC, IF, FC	46
CD34	60180-1-Ig	WB, IHC, IF, FC	14
CD34	PE-65183	FC	2
CD38	60006-1-Ig	WB, IHC, IF, FC	4
CD38	25284-1-AP	WB, IHC, IF, FC	3
CD44	15675-1-AP	WB, IP, IHC, IF, FC, CoIP, Cell treatment	182
CD44	60224-1-Ig	WB, IHC, IF, FC	24
CD44	65063-1-Ig	FC	1
CD44	FITC-65063	FC	1
CD44	PE-65063	FC	1
CD45	20103-1-AP	WB, IP, IHC, IF, FC	44
CD45	60287-1-Ig	WB, IHC, IF, FC	13
CD45	65109-1-Ig	IF, FC	1
CD59	10742-1-AP	WB, IHC, IF, FC	6
CD71	10084-2-AP	WB, IP, IHC, IF	42
CD71	66180-1-Ig	WB, IP, IHC, IF, FC	4
CD73	65162-1-Ig	FC	1
CD90	66766-1-Ig	WB, IHC, IF, FC	9
CD133	18470-1-AP	WB, IHC, IF, FC	169
CD133	66666-1-Ig	WB, IHC, IF, FC	28
c-Kit/CD117	18696-1-AP	WB, IHC, IF, FC	9
c-Met (Cytoplasmic)	25869-1-AP	WB, IP, IHC, IF	31
c-MYC	10828-1-AP	WB, IP, IF, FC, EMSA, CoIP, ChIP	380
c-MYC	67447-1-Ig	WB, IP, IHC, FC, CoIP	31
CXCR4	11073-2-AP	WB, IP, IHC, IF	27
CXCR4	60042-1-Ig	WB, IHC, IF, FC, CoIP	26
Cytokeratin 14	10143-1-AP	WB, IP, IHC, IF, FC	43
Cytokeratin 14	60320-1-Ig	WB, IHC, IF, FC	7
Cytokeratin 14	22221-1-AP	WB, IP, IHC, IF, FC	1
Cytokeratin 19	10712-1-AP	WB, IHC, IF, FC	90
Cytokeratin 19	14965-1-AP	WB, IHC, IF, FC	8
Cytokeratin 19	60187-1-Ig	WB, IHC, IF	4
DAZL	12633-1-AP	WB, IP, IHC, IF	3
Desmin	16520-1-AP	WB, IP, IHC, IF, FC	27
Desmin	67793-1-Ig	WB, IHC, IF	2
DKK3	10365-1-AP	WB, IHC, IF, FC	14
E-cadherin	20874-1-AP	WB, IP, IHC, IF, FC, CoIP	1085
E-cadherin	60335-1-Ig	WB, IHC, IF, FC	82
Endoglin/CD105	10862-1-AP	WB, IP, IHC, IF	13
Endoglin/CD105	28117-1-AP	WB, IHC	1
EPCAM/CD326	21050-1-AP	WB, IHC, IF, FC, ChIP	39
EPCAM/CD326	66316-1-Ig	WB, IHC, IF, FC	4
ESRRB	22644-1-AP	WB, IP, IHC, IF	6
ESRRB	66818-1-Ig	WB, IF	1
ETV5	13011-1-AP	WB, IF, CoIP, ChIP	16
ETV5	66657-1-Ig	WB, ChIP	2
FABP3	10676-1-AP	WB, IHC, IF	12

抗体靶标	货号	应用	文献
FABP3	60280-1-Ig	WB, IHC, IF	3
FGFR1	60325-1-Ig	WB, IHC, IF, FC	17
FLT3	21049-1-AP	WB, IP, IF	3
Frizzled 9	13865-1-AP	WB, IHC	2
FUT4	19497-1-AP	WB, IP, IHC, IF	21
GFAP	16825-1-AP	WB, IHC, IF	268
GFAP	60190-1-Ig	WB, IP, IHC, Dot blot	82
GLI1	66905-1-Ig	WB, IHC, IF	38
HES5	22666-1-AP	WB, IHC	11
Integrin Beta 1	12594-1-AP	WB, IHC, IF	37
Integrin Beta 1	26918-1-AP	WB, IHC, IF, FC	15
Integrin Beta 1	66315-1-Ig	WB, FC	1
KLF4	11880-1-AP	WB, IP, IHC, IF, FC, ChIP	82
KLF5	21017-1-AP	WB, IP, IHC, IF, CoIP, ChIP	24
Lamin A/C	10298-1-AP	WB, IP, IF, FC	127
LIN28	11724-1-AP	WB, IP, IHC, IF	42
LIN28	60344-1-Ig	WB, IHC, IF	2
MEF2C	10056-1-AP	WB, IP, IHC, IF, ChIP	34
MME,CD10	18008-1-AP	WB, IP, IHC, IF, FC	12
MYOD1	18943-1-AP	WB, IHC, IF, FC	41
MYOD1	66214-1-Ig	WB	3
NANOG	14295-1-AP	WB, IHC, IF, FC	124
NANOG	67255-1-Ig	WB	3
NCAM1/CD56	14255-1-AP	WB, IHC, IF, FC	31
NCAM1/CD56	60238-1-Ig	WB, IHC, IF	3
Nestin	19483-1-AP	WB, IHC, IF	47
Nestin	66259-1-Ig	WB, FC	23
NOTCH1	20687-1-AP	WB, IHC, IF, FC, CoIP	52
Notch1	10062-2-AP	WB, IP, IHC, IF	18
NT5E/CD73	12231-1-AP	WB, IHC, IF, FC	15
OCT4	60242-1-Ig	WB, IHC, IF	18
OCT4/POU5F1	11263-1-AP	WB, IP, IHC, IF, FC	155
OLIG2	13999-1-AP	WB, IP, IHC, IF	38
OLIG2	66513-1-Ig	WB, IHC, IF	5
p63	12143-1-AP	WB, IP, IHC, IF, ChIP	22
p63	60332-1-Ig	WB, IHC	2
p75NTR	55014-1-AP	WB, IP, IHC, FC	17
PAX2	29307-1-AP	WB, IHC, FC	2
PAX6	12323-1-AP	WB, IHC, IF, FC	35
PAX6	67529-1-Ig	WB, IHC, IF	1
Phospho-Beta Catenin (Ser33)	80067-1-RR	WB	2
Phospho-Beta Catenin (Ser675)	80084-1-RR	WB	1
Podocalyxin	18150-1-AP	WB, IHC, IF, FC	5
PTEN	22034-1-AP	WB, IP, IHC, IF, FC	102
RUNX1 (middle)	25315-1-AP	WB, IP, IHC, IF	7
RUNX1 (N-terminal)	19555-1-AP	WB, IP	1
S100 Beta	15146-1-AP	WB, IHC, IF	44
SALL4	66236-1-Ig	WB, IHC	2
SIX2	11562-1-AP	WB, IP, ChIP	212
SIX2	66347-1-Ig	WB, IHC, IF	2
SNAI1	13099-1-AP	WB, IP, IF, CoIP, ChIP	260
SNAI2	12129-1-AP	WB, IHC, IF, FC	86
SOX10	66786-1-Ig	WB, IHC, IF, FC	4
SOX10	10422-1-AP	WB, IP, IHC, IF	3
SOX2	11064-1-AP	WB, IHC, IF, FC	153
SOX2	20118-1-AP	WB, IHC, IF, FC	14
SOX2	66411-1-Ig	WB, IHC, IF	10
SOX9	67439-1-Ig	WB, IF, FC	12
STAT3	10253-2-AP	WB, IP, IHC, IF, FC, CoIP, ChIP	220
STAT3	60199-1-Ig	WB, IP, IHC, IF, FC	30
TBX3	16741-1-AP	WB, IP, IHC	7
TWIST1-specific	25465-1-AP	WB, IP, IHC, IF, CoIP, ChIP	116
Vimentin	10366-1-AP	WB, IP, IHC, IF, FC, CoIP	896
Vimentin	60330-1-Ig	WB, IP, IHC, IF, FC	108
YAP1	13584-1-AP	WB, IP, IHC, IF, FC, CoIP	128

更多相关抗体请登录Proteintech中文官网www.ptgcn.com查询

Proteintech 旗下品牌



抗体 · ELISA试剂盒 · 蛋白质



人源细胞表达高活性蛋白



纳米抗体相关产品



表观遗传学专家(独家代理)