

Human CD4 Magnetic Beads Kit

Catalog#/Size: KMS002-10/10 test
KMS002-100/100 test

Description

CD4 is a 55 kDa glycoprotein that is a co-receptor of T cell receptor in T lymphocytes. CD4+ cells are essential for achieving effective immune response by associating with class II MHC molecules. 25%-65% human lymphocytes are CD4 positive. Human CD4 Magnetic Beads Kit is used for isolation or depletion of human CD4 T lymphocytes from PBMC, whole blood, or other sample types. Following incubation with biotinylated human CD4 antibody and Streptavidin magnetic beads, the cell sample is placed on a magnet. CD4+ cells remain attached to magnetic beads after separation and can be used for downstream applications, such as cell expansion, but not suitable for flow cytometry. CD4- cells remain in supernatant and can also be used for further application.

Product Details

Components

KMS002-10:

- MS001-10: 100 μ L 10mg/mL streptavidin magnetic beads
- MS65143-10: 100 μ L 0.1mg/mL Biotin-CD4 (clone: RPAT4)

KMS002-100:

- MS001-100: 1mL 10mg/mL streptavidin magnetic beads
- MS65143-100: 1mL 0.1mg/mL Biotin-CD4 (clone: RPAT4)

Reactivity

Human

Beads Diameter

2.7 μ m

Storage buffer

PBS, pH7.4, 0.2% BSA and 0.05% Sodium Azide

Storage temperature

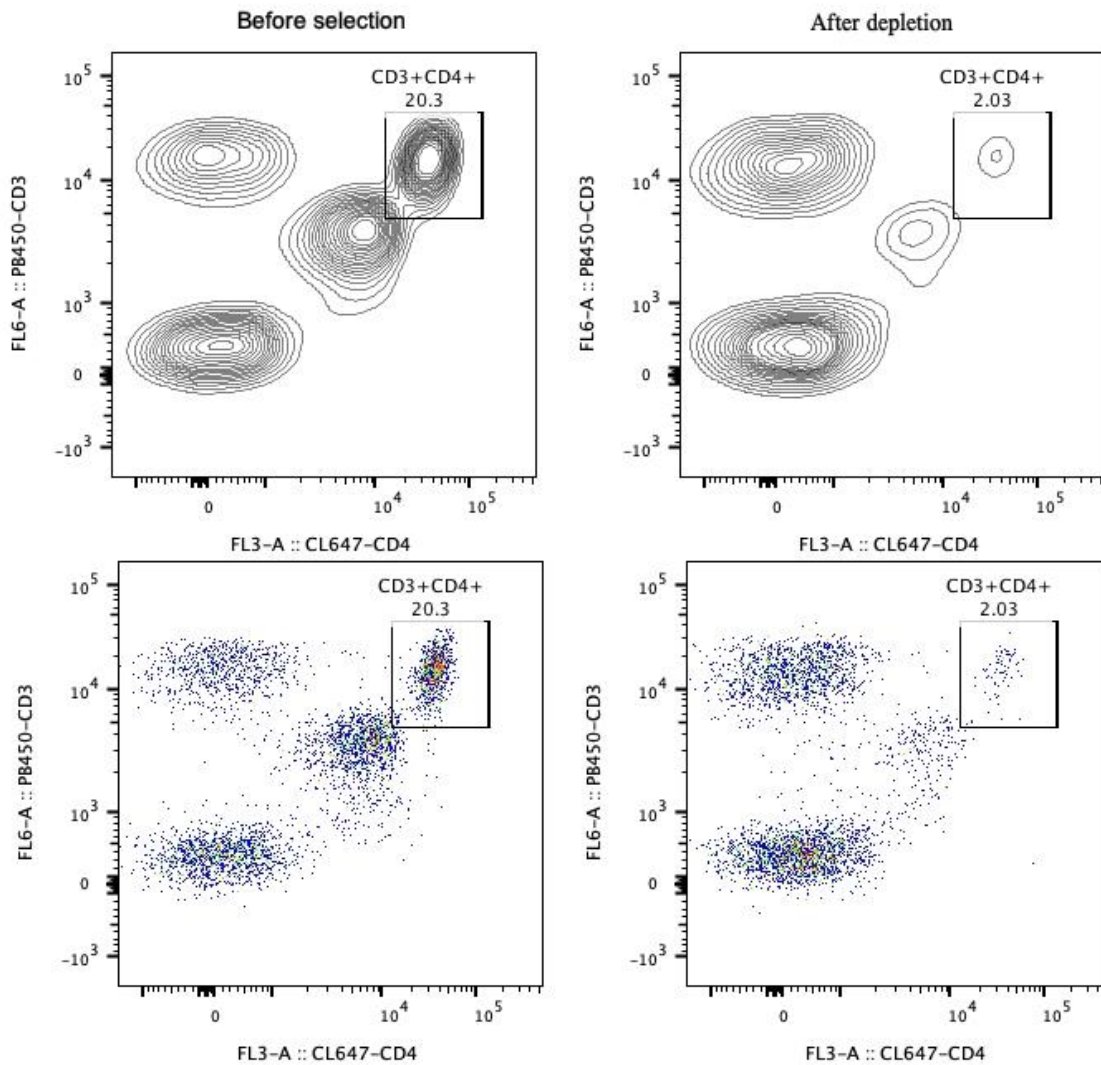
2-8 $^{\circ}$ C

Recommended Usage

10 μ L Biotin-CD4 antibody and 10 μ L streptavidin beads for 1x10⁷ cells

Representative example of depletion

Following depletion of CD4+ cells, supernatant cell suspension was stained with PB450-CD3(clone: HIT3a) and CL647-CD4(clone: OKT4). CD45+ cells are gated in the analysis. Left panel: CD3+CD4+ cells before selection. Right panel: CD3+CD4+ cells after depletion. Human CD4 magnetic beads kit is tested using PBMC from three donors.



For technical support for this product please contact:

T: 1(888)4PTGLAB(1-888-478-4522) (toll free in USA), or 1(312)455-8498 (outside USA)

E: proteintech@ptglab.com

W: ptglab.com