

## Human CD19 Magnetic Beads

Catalog#/Size: MS005-10/10 test

MS005-100/100 test

---

### Description

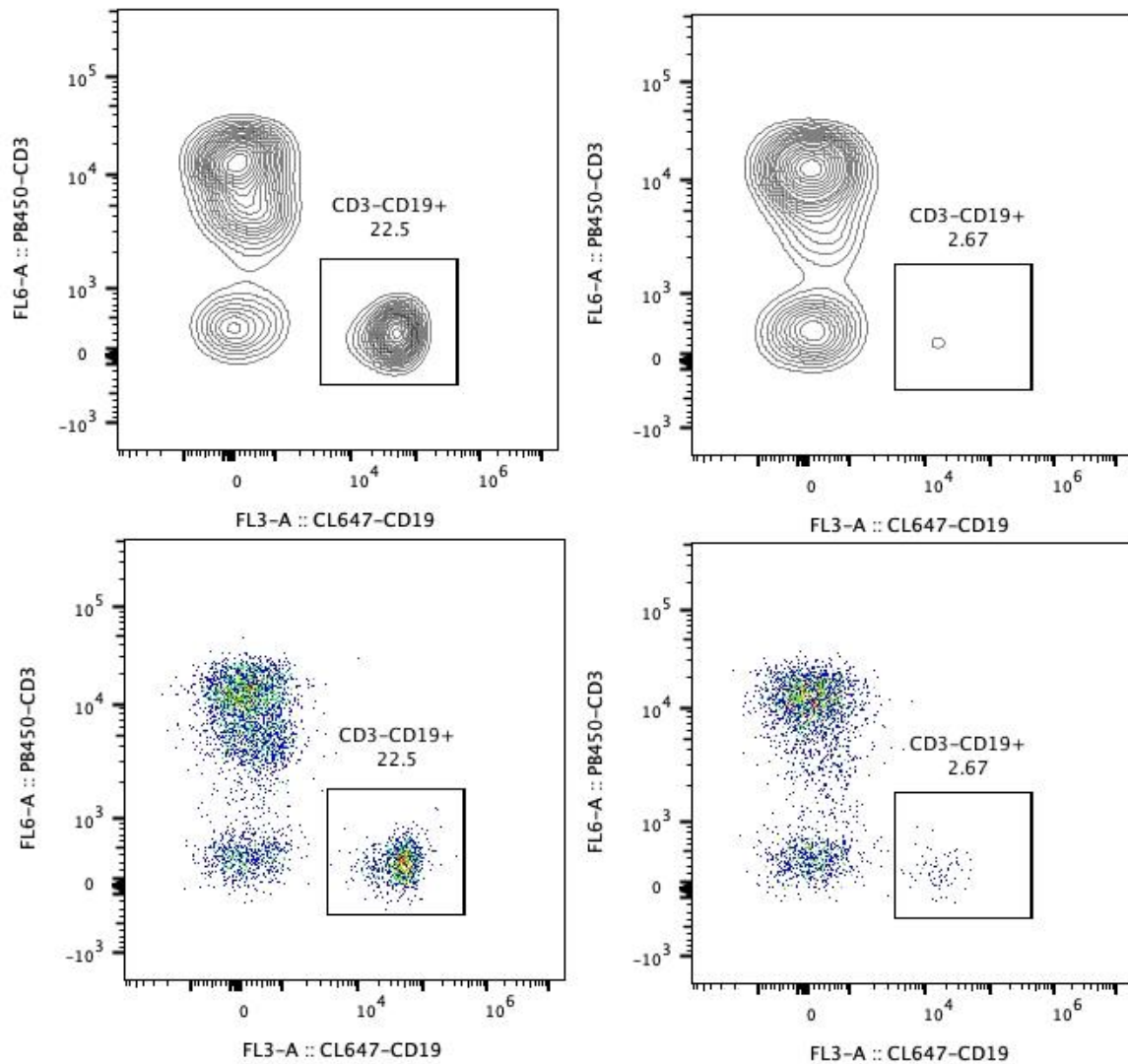
CD19 is a 95kDa, type I transmembrane glycoprotein that belongs to the immunoglobulin superfamily. It is expressed by B cells and follicular dendritic cells and regulates B cell lineage commitment during hematopoietic stem cell differentiation. It is observed that 6%-23% human PBMC are CD19 positive. Human CD19 Magnetic Beads can be used for isolation or depletion of human CD19 B lymphocytes from PBMC, whole blood, or other sample types. Following incubation with human CD19 antibody conjugated magnetic beads, the cell sample is placed on a magnet. CD19+ cells remain attached to magnetic beads after separation and can be used for downstream applications, such as in expansion of cells, but are not suitable for flow cytometry analysis. CD19- cells remain in supernatant and could be used for further applications.

### Product Details

Components	MS005-10: 100µL 10mg/mL Human CD19 Magnetic Beads MS005-100: 1mL 10mg/mL Human CD19 Magnetic Beads
Reactivity	Human
Beads Diameter	2.7 µm
Storage buffer	PBS, pH7.4, 0.2% BSA and 0.05% Sodium Azide
Storage temperature	2-8 °C
Recommend usage	10µL Human CD19 Magnetic Beads for 1x10 <sup>7</sup> cells

## Representative example of depletion

Following depletion of CD19+ cells, supernatant cell suspension was stained with PB450-CD3(clone: HIT3a) and CL647-CD19(clone: SJ25C1) antibodies. CD45 positive cells are gated in the analysis. Left panel: CD3-CD19+ cells before selection. Right panel: CD3-CD19+ cells after depletion. Human CD19 Magnetic Beads are tested using PBMC from three different donors.



For technical support for this product please contact:

T: 1(888)4PTGLAB(1-888-478-4522) (toll free in USA), or 1(312)455-8498 (outside USA)

E: [proteintech@ptglab.com](mailto:proteintech@ptglab.com)

W: [ptglab.com](http://ptglab.com)