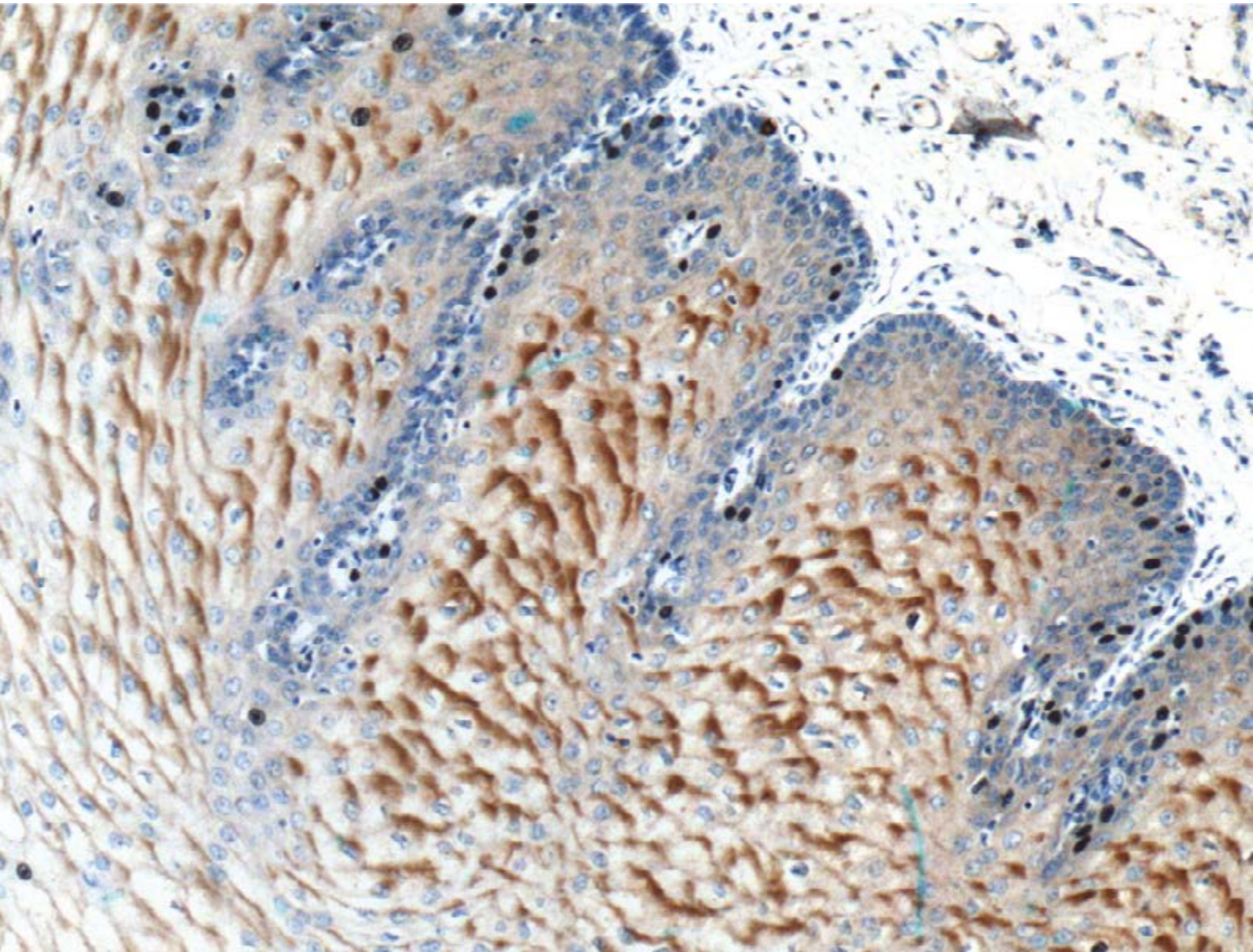


ANTIBODIES FOR IMMUNE RESPONSE

www.ptglab.com



Front Cover:

Immunohistochemistry of paraffin-embedded human oesophagus tissue slide using VEGFA antibody (19003-1-AP) at a dilution of 1:200 (10x objective).

WELCOME

The human immune system contains a collection of different cell types and molecules that help to protect the body from toxins, viral infections, bacteria, and parasites. Although immunology covers all aspects of this complex network, the field is united by the immune cell. The central points of immunology are: understanding, identifying, and distinguishing the many different immune cells that are essential for diagnosis and therapy. This includes research on both the innate and adaptive immune response and processes such as pathogen recognition, immune cell activation and recruitment, cytokine secretion, inflammation, and antibody production. Cell markers are helpful tools for immunophenotyping diverse types of human immune cells. This catalog offers a detailed choice of the most commonly used cell markers and an extensive selection of antibodies used in immunology.

What's Inside

- **4–5** **Product Focus**
 - Natural killer (NK) cells and NCAM1/CD56
 - CD20 and B cells
 - A keystone cytokine – the many faces of Interleukin-6 (IL-6)
 - Multiple roles for Tumor Necrosis Factor-Alpha (TFNA/TNFSF2)
- **6–17** **Antibodies:**
 - AGER → ZC3HAV1
- **18** **Contact Us**

Please Note: All products featured in this catalog are for research use only.

*Proteintech® and the Proteintech logo are trademarks of Proteintech Group registered in the US Patent and Trademark Office.

PRODUCT FOCUS

Natural killer (NK) cells and NCAM1/CD56

Focus Antibody
NCAM1/CD56

Catalog Number
14255-1-AP

Type
Rabbit Polyclonal

Applications
ELISA, FC, IF, IHC, WB

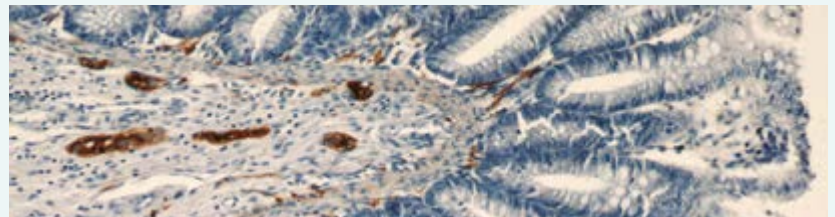
6 Publications

Natural killer (NK) cells are the most responsive immune cells to acute exercise. Their sensitivity to physiological stress combined with their role in innate immune defenses shows that there is a link between regular physical activity and overall health status. NK cells are a heterogeneous population consisting of at least two distinct subsets based on the expression intensity of neural cell adhesion molecule 1 (NCAM1, also known as CD56).

NCAM1/CD56 is a cell adhesion molecule involved in neuron-neuron adhesion, neurite fasciculation, an outgrowth of neurites, synaptic plasticity, neurodevelopment, and neurogenesis. Besides NK cells, NCAM1

is also expressed on the surface of human neurons, glial cells, and skeletal muscle cells. It is also involved in the expansion of CD4+ and CD8+ T cells and dendritic cells, which play an important role in immune surveillance. There are three main forms of human NCAM-1 that arise by alternative splicing: 120kDa (761 amino acids (aa) (glycosylphosphatidylinositol (GPI) anchored)), 140kDa (848 aa, short cytoplasmic domain), and 180kDa (1120 aa, long cytoplasmic domain).

NCAM1/CD56 is already broadly used as a sensitive and diagnostically useful immunohistochemical marker for problematical small cell lung carcinomas or neuroendocrine tumors.



Immunohistochemical staining of paraffin-embedded human colon slide using NCAM1 antibody (14255-1-AP) at a dilution of 1:400.

CD20 and B cells

Focus Antibody
CD20

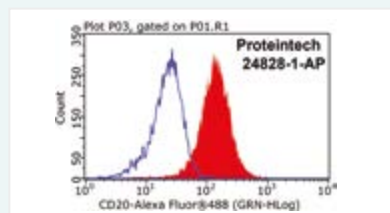
Catalog Number
24828-1-AP

Type
Rabbit Polyclonal

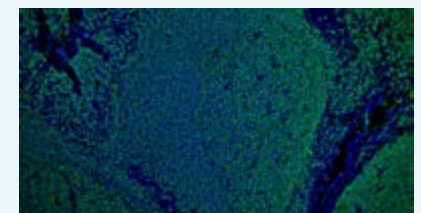
Applications
ELISA, FC, IHC, IP, WB

CD20 is a 33-37 kDa transmembrane phosphoprotein. B-lymphocyte antigen CD20 is also known as B-lymphocyte surface antigen B1, Leukocyte surface antigen Leu-16, Membrane-spanning 4-domains subfamily A member 1, and MS4A1. It is an activated-glycosylated protein expressed on the surface of all B cells beginning at the pro-B phase (CD45R+, CD117+) and progressively increasing in concentration until maturity. CD20 is expressed in all stages of B cell development except the first and last.

CD20 serves as a useful target for antibody-mediated therapeutic depletion of B cells. It is the target of the monoclonal antibodies (mAb) rituximab, Ibritumomab tiuxetan, and tositumomab, which are all active agents in the treatment of all B-cell lymphomas and leukemias.



1X10⁶ Raji cells were stained with 0.2 µg MS4A1/CD20 antibody (24828-1-AP, red) and control antibody (blue). Fixed with 4% PFA blocked with 3% BSA (30 min). Alexa Fluor 488-Goat anti-Rabbit IgG at a dilution of 1:100.



Immunofluorescent staining of 4% PFA fixed human tonsillitis tissue using CD20 antibody (24828-1-AP) at a dilution of 1:50 and Alexa Fluor 488-conjugated AffiniPure Goat Anti-Rabbit IgG (H+L) (10x objective).

A keystone cytokine – the many faces of Interleukin-6 (IL-6)

Focus Antibody
IL-6

Catalog Number
21865-1-AP

Type
Rabbit Polyclonal

Applications
ELISA, IHC, WB

28 Publications

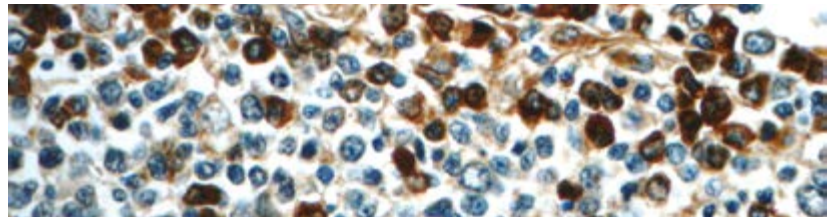
KD/KO Validated

Interleukin-6 (IL-6) acts as both a pro-inflammatory and an anti-inflammatory cytokine. It is an endogenous chemical, active in inflammation and in B cell maturation.

In the early phase of infectious inflammation, IL-6 is produced by monocytes and macrophages immediately after the stimulation of Toll-like receptors (TLRs) with distinct pathogen-associated molecular patterns (PAMPs). In non-infectious inflammations, such as a burn or traumatic injury, damage-associated molecular patterns (DAMPs) from damaged or dying cells stimulate TLRs to produce IL-6. This acute IL-6 expression plays a significant role in host defense by stimulating various cell populations. IL-6 is released by monocytes and macrophages in response to other inflammatory cytokines, which include interleukin-11 and tumor necrosis factor (TNF)-beta.

IL-6 is a molecule with multiple forms and functions depending on where it is secreted. IL-6 helps T cells to differentiate in their development. It is required for progenitor cell development and helps B cells differentiate and proliferate, and it promotes the formation of plasma cells from B cells. IL-6 also plays a vital role in the development of blood cells, whether white cells, red cells, or platelets. IL-6 also leads to the activation of osteoclasts and osteoporosis. It also induces the secretion of vascular endothelium growth factor (VEGF), which leads to the increased growth of blood vessels and vascular permeability in inflammation.

Genetic variations of IL6 are associated with rheumatoid arthritis systemic juvenile (RASJ), and polymorphism of IL6 promoter can be an indicator for Kaposi sarcoma development in HIV-infected men.



Immunohistochemical staining of paraffin-embedded human tonsillitis slide using IL6 antibody (21865-1-AP) at a dilution of 1:50.

Multiple roles for Tumor Necrosis Factor-Alpha (TNFA/TNFSF2)

Focus Antibody
TNFR2

Catalog Number
19272-1-AP

Type
Rabbit Polyclonal

Applications
ELISA, FC, IF, IHC, IP, WB

4 Publications

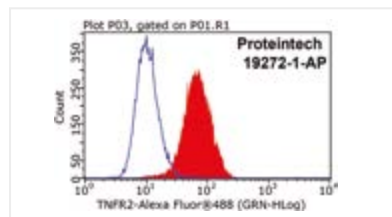
KD/KO Validated

Tumor necrosis factor-alpha (TNFA/TNFSF2) is an important multifunctional cytokine that regulates inflammation, host defense, immune responses, and apoptosis. TNFA/TNFSF2 signals through two distinct cell surface receptors, TNFR1 (TNFRSF1A, CD120a, p55) and TNFR2 (TNFRSF1B, CD120b, p75). TNFR1 is widely expressed, whereas TNFR2 exhibits more restricted expression, being found on CD4 and CD8 T lymphocytes, endothelial cells, microglia, oligodendrocytes, neuron subtypes, cardiac myocytes, thymocytes, and human mesenchymal stem cells. TNFA/TNFSF2 is mainly secreted by macrophages.

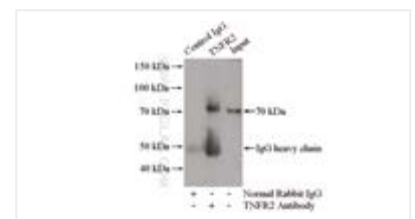
The main biologic function is to induce inflammation via the upregulation of gene transcription, primarily through the NF- κ B and AP-1 signaling pathways, which

leads to the expression of a large number of genes. TNF plays a significant role in innate immunity and host defense against bacterial, fungal, and parasitic pathogens and is particularly important for host defense against intracellular organisms such as Mycobacterium tuberculosis. Dysregulation of TNFA/TNFSF2 has been found to be involved in tumorigenesis, tumor metastasis, viral replication, septic shock, fever, inflammation, autoimmune diseases including Crohn's disease, in addition to rheumatoid arthritis and graft-versus-host disease.

Recently, growing evidence has shown that a blocking of TNFA/TNFSF2 action in patients and experimental animal models increases disease activity and severity in some T-cell-dependent autoimmune diseases (e.g., multiple sclerosis or Type 1 diabetes).




1X10⁶ HeLa cells were stained with 0.5 μ g TNFR2 antibody (19272-1-AP, red) and control antibody (blue). Fixed with 4% PFA blocked with 3% BSA (30 min). FITC-Goat anti-Rabbit IgG with dilution 1:100.



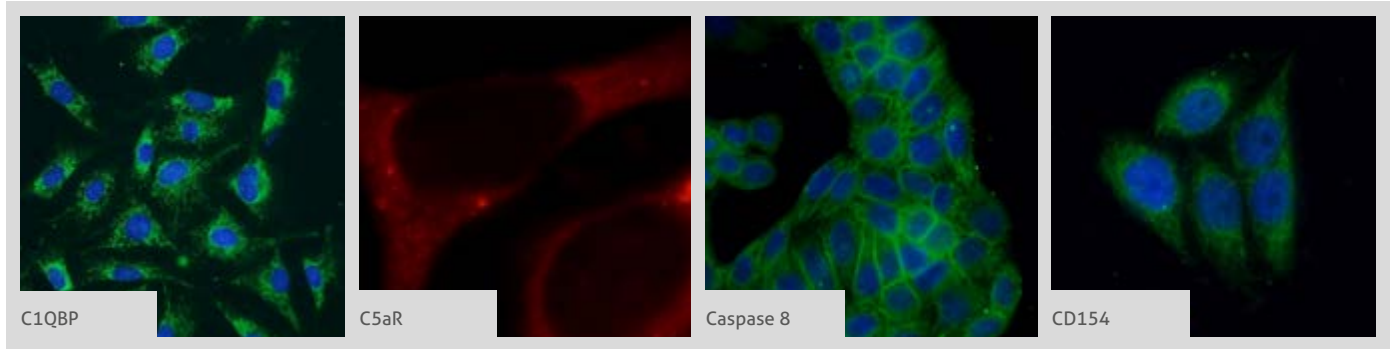
IP result of anti-TNFR2 (IP: 19272-1-AP, 4 μ g; Detection: 19272-1-AP 1:500) with HEK-293 cells lysate 1200 μ g.

ANTIBODY PRODUCT LIST

Antibody Name	Cat. No.	Type	Applications
AGER	1 16346-1-AP	Rabbit Poly	ELISA, IHC, WB
ALCAM	21972-1-AP	Rabbit Poly	ELISA, IHC, WB
AMIGO2	14076-1-AP	Rabbit Poly	ELISA, WB
AMIGO3	21278-1-AP	Rabbit Poly	ELISA, IF, WB
AP1, JUN, P39	11 10024-2-AP	Rabbit Poly	ELISA, IF, IHC, IP, WB
AP1, JUN, P39	22114-1-AP	Rabbit Poly	ELISA, IF, WB
ASGR1	11739-1-AP	Rabbit Poly	ELISA, FC, IHC, IP, WB
ASGR2	11501-2-AP	Rabbit Poly	ELISA, FC, IP, WB
ATG12	3 11122-1-AP	Rabbit Poly	ELISA, IHC, IP, WB
ATG12	11264-1-AP	Rabbit Poly	ELISA, IF, IHC, WB
ATG5	60061-1-Ig	Rabbit Poly	ELISA, WB
ATG5	22 10181-2-AP	Rabbit Poly	ELISA, IF, IHC, WB
AXL	1 13196-1-AP	Rabbit Poly	ELISA, FC, IP, WB
B2M	66207-1-Ig	Mouse Mono	ELISA, IHC, WB
Beta-2-microglobulin	1 13511-1-AP	Rabbit Poly	ELISA, FC, IF, IHC, WB
BPI	14368-1-AP	Rabbit Poly	ELISA, IF, WB
Brevican	19017-1-AP	Rabbit Poly	ELISA, IHC, WB
BSAP, PAX5	60349-1-Ig	Mouse Mono	ELISA, IHC, WB
BSAP, PAX5	26709-1-AP	Rabbit Poly	ELISA, IHC, WB
C1qA	1 11602-1-AP	Rabbit Poly	ELISA, IP, WB
C1QBP	 24474-1-AP	Rabbit Poly	ELISA, IF, IHC, WB
C1qC	66268-1-Ig	Mouse Mono	ELISA, WB
C1qC	16889-1-AP	Rabbit Poly	ELISA, IHC, WB
C1R	17346-1-AP	Rabbit Poly	ELISA, IHC, WB
C1S	14554-1-AP	Rabbit Poly	ELISA, IHC, WB
C2	27175-1-AP	Rabbit Poly	ELISA, IHC, WB

Antibody Name	Cat. No.	Type	Applications
C3/C3b/C3c	66157-1-Ig	Mouse Mono	ELISA, IF, IHC, WB
C3/C3b/C3c	1 21337-1-AP	Rabbit Poly	ELISA, IHC, IP, WB
C4 (alpha chain)	22233-1-AP	Rabbit Poly	ELISA, IHC, IP, WB
C4 (gamma chain)	66242-1-Ig	Mouse Mono	ELISA, WB
C4BPA	1 11819-1-AP	Rabbit Poly	ELISA, IHC, WB
C4BPB	15837-1-AP	Rabbit Poly	ELISA, IHC, WB
C5aR	 2 21316-1-AP	Rabbit Poly	ELISA, FC, IF, IHC, IP, WB
C6	17239-1-AP	Rabbit Poly	ELISA, IHC, IP, WB
C7	17642-1-AP	Rabbit Poly	ELISA, WB
C8A	25289-1-AP	Rabbit Poly	ELISA, WB
Cadherin-7	13598-1-AP	Rabbit Poly	ELISA, IHC, WB
Cadherin-13	12618-1-AP	Rabbit Poly	ELISA, FC, IHC, IP, WB
Cadherin-16	1 15107-1-AP	Rabbit Poly	ELISA, IF, IHC, WB
Cadherin-17	24339-1-AP	Rabbit Poly	ELISA, IHC, WB
Cadherin-18	13091-1-AP	Rabbit Poly	ELISA, WB
Cadherin-20	22049-1-AP	Rabbit Poly	ELISA, WB
CADM1	1 14335-1-AP	Rabbit Poly	ELISA, WB
CADM3	15660-1-AP	Rabbit Poly	ELISA, FC, WB
CADM4	23136-1-AP	Rabbit Poly	ELISA, WB
CAMP	12009-1-AP	Rabbit Poly	ELISA, IF, IHC, WB
CARD9	4 10669-1-AP	Rabbit Poly	ELISA, WB
Caspase 1	5 22915-1-AP	Rabbit Poly	ELISA, IF, IHC, WB
Caspase 2/p18	10436-1-AP	Rabbit Poly	ELISA, IHC, WB
Caspase 2/p18	24777-1-AP	Rabbit Poly	ELISA, IF, WB
Caspase 4/p20/p10	1 11856-1-AP	Rabbit Poly	ELISA, IF, IHC, WB
Caspase 8	 4 66093-1-Ig	Mouse Mono	ELISA, IF, IHC, IP, WB

More validation images available on our website.

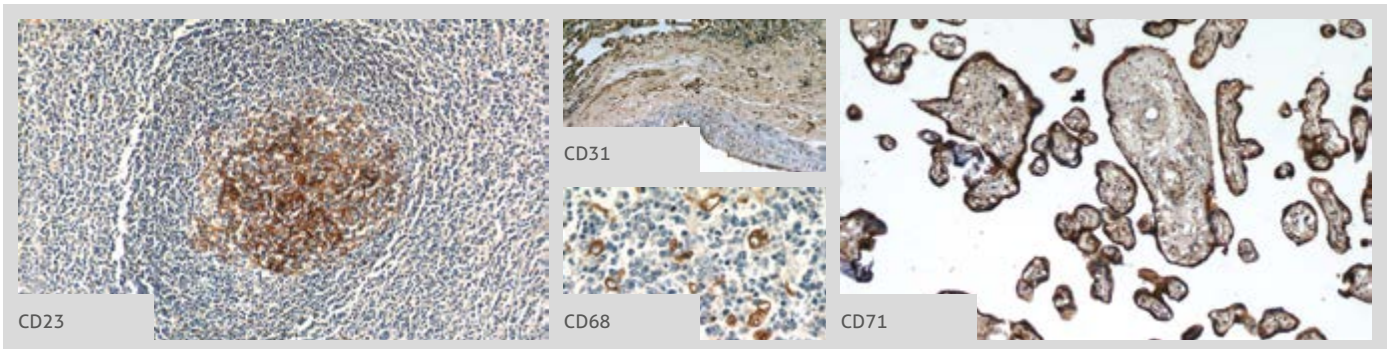


Antibody Name	Cat. No.	Type	Applications
Caspase 8	47 13423-1-AP	Rabbit Poly	ELISA, IF, IHC, IP, WB
Caspase 9/p35/p10	3 66169-1-Ig	Mouse Mono	ELISA, IF, IHC, IP, WB
Caspase 9/p35/p10	93 10380-1-AP	Rabbit Poly	ELISA, FC, IF, IHC, IP, WB
Caspase 9/p35/p10	1 23821-1-AP	Rabbit Poly	ELISA, IF, IHC, WB
Cathepsin G	23840-1-AP	Rabbit Poly	ELISA, WB
CCL17	1 22342-1-AP	Rabbit Poly	ELISA, IHC, WB
CCL18/MIP-4	22303-1-AP	Rabbit Poly	ELISA, IHC
CCL23	17865-1-AP	Rabbit Poly	ELISA, WB
CCL24/Eotaxin 2	22306-1-AP	Rabbit Poly	ELISA, IHC, WB
CCL25/TECK	25285-1-AP	Rabbit Poly	ELISA, WB
CCL27	22301-1-AP	Rabbit Poly	ELISA, IF, IHC
CCL28	18214-1-AP	Rabbit Poly	ELISA, IHC, WB
CCR10	22071-1-AP	Rabbit Poly	ELISA, FC, IHC, WB
CCR2-specific	16153-1-AP	Rabbit Poly	ELISA, FC, IHC, WB
CCR3	22351-1-AP	Rabbit Poly	ELISA, IHC
CCR5	1 17476-1-AP	Rabbit Poly	ELISA, FC, WB
CCR7	55425-1-AP	Rabbit Poly	ELISA, IHC, WB
CD10, MME	23782-1-AP	Rabbit Poly	ELISA, IHC, WB
CD11a/Integrin alpha-L	66256-1-Ig	Mouse Mono	ELISA, IHC
CD11B/Integrin alpha M	3 20991-1-AP	Rabbit Poly	ELISA, FC, IHC, WB
CD11B/Integrin alpha M	21851-1-AP	Rabbit Poly	ELISA, IHC
CD11c/Integrin alpha X	1 60258-1-Ig	Mouse Mono	ELISA, IHC, WB
CD11c/Integrin alpha X	3 17342-1-AP	Rabbit Poly	ELISA, FC, IHC, WB
CD11d/Integrin alpha D	55162-1-AP	Rabbit Poly	ELISA, WB
CD127/IL7R	17626-1-AP	Rabbit Poly	ELISA, FC, IP, WB
CD13	66211-1-Ig	Mouse Mono	ELISA, IHC, WB
CD13	1 14553-1-AP	Rabbit Poly	ELISA, FC, IHC, WB
CD134/OX40	20006-1-AP	Rabbit Poly	ELISA, FC, WB

Antibody Name	Cat. No.	Type	Applications
CD138/Syndecan-1	60185-1-Ig	Mouse Mono	ELISA, WB
CD138/Syndecan-1	4 10593-1-AP	Rabbit Poly	ELISA, IF, IHC, IP, WB
CD14	1 60253-1-Ig	Mouse Mono	ELISA, IF, IHC, WB
CD14	4 17000-1-AP	Rabbit Poly	ELISA, FC, IF, IHC, WB
CD146/MCAM	66153-1-Ig	Mouse Mono	ELISA, FC, IHC, WB
CD146/MCAM	3 17564-1-AP	Rabbit Poly	ELISA, FC, IF, IHC, IP, WB
CD147	66443-1-Ig	Mouse Mono	ELISA, IHC, WB
CD147	8 11989-1-AP	Rabbit Poly	ELISA, IF, IHC, IP, WB
CD154	3 16668-1-AP	Rabbit Poly	ELISA, IF, IHC, IP, WB
CD16	16559-1-AP	Rabbit Poly	ELISA, FC, IHC, WB
CD163	16646-1-AP	Rabbit Poly	ELISA, FC, IHC
CD164	12083-2-AP	Rabbit Poly	ELISA, FC, IHC, WB
CD169	55427-1-AP	Rabbit Poly	ELISA, IHC
CD18	10554-1-AP	Rabbit Poly	ELISA, FC, IHC, WB
CD19	66298-1-Ig	Mouse Mono	ELISA, IHC, WB
CD1A	60173-1-Ig	Mouse Mono	ELISA, WB
CD1A	17325-1-AP	Rabbit Poly	ELISA, WB
CD1d	66257-1-Ig	Mouse Mono	ELISA, IHC, WB
CD1d	17336-1-AP	Rabbit Poly	ELISA, WB
CD2	60005-1-Ig	Mouse Mono	ELISA, IHC, WB
CD2	10299-1-AP	Rabbit Poly	ELISA, FC, IHC, WB
CD2	23973-1-AP	Rabbit Poly	ELISA, IHC, WB
CD20	60271-1-Ig	Mouse Mono	ELISA, FC, IHC, WB
CD20	24828-1-AP	Rabbit Poly	ELISA, FC, IHC, IP, WB
CD200	66282-1-Ig	Mouse Mono	ELISA, IHC, WB
CD200	14057-1-AP	Rabbit Poly	ELISA, IHC, WB
CD206	1 60143-1-Ig	Mouse Mono	ELISA, FC, IP, WB
CD206	6 18704-1-AP	Rabbit Poly	ELISA, FC, IHC, WB
CD209	25404-1-AP	Rabbit Poly	ELISA, FC, WB
CD21	24374-1-AP	Rabbit Poly	ELISA, IHC

00 This number shows the amount of times our antibody has been cited in a publication.

CD22
 → CEACAM3-Specific

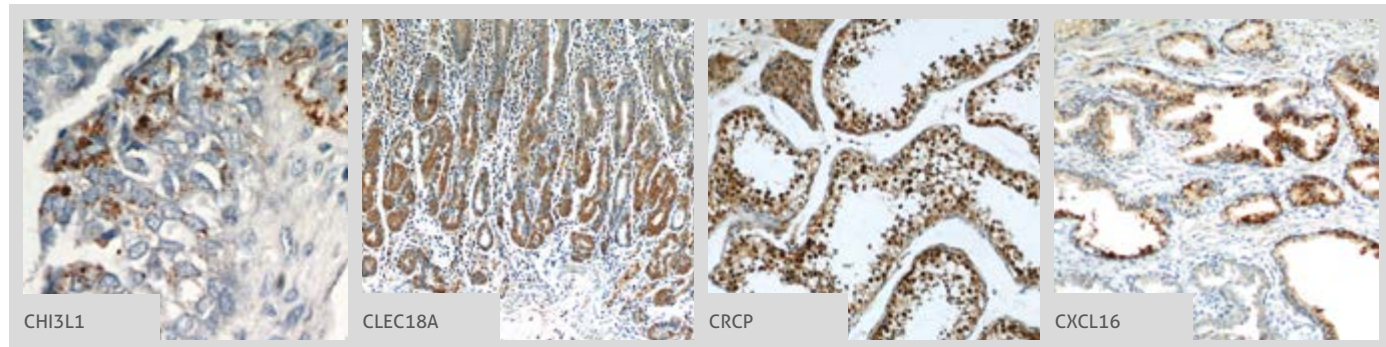
 More validation images available on our website. 


Antibody Name	Cat. No.	Type	Applications
CD22	66103-1-Ig	Mouse Mono	ELISA, IHC, WB
CD226	17842-1-AP	Rabbit Poly	ELISA, IHC, WB
CD23	60208-1-Ig	Mouse Mono	ELISA, IHC, WB
CD23	10300-1-AP	Rabbit Poly	ELISA, IHC
CD23	 18642-1-AP	Rabbit Poly	ELISA, FC, IHC, WB
CD24	10600-1-AP	Rabbit Poly	ELISA, IHC, WB
CD24	2 18330-1-AP	Rabbit Poly	ELISA, WB
CD244	16677-1-AP	Rabbit Poly	ELISA, IHC
CD247	1 12837-2-AP	Rabbit Poly	ELISA, FC, IHC, IP, WB
CD27	66308-1-Ig	Mouse Mono	ELISA, IHC, WB
CD27	11121-1-AP	Rabbit Poly	ELISA, FC, WB
CD3 delta	60194-1-Ig	Mouse Mono	ELISA, WB
CD3 delta	1 16669-1-AP	Rabbit Poly	ELISA, FC, IHC, IP, WB
CD3 gamma	60347-1-Ig	Mouse Mono	ELISA, FC, IHC, WB
CD3 gamma	21120-1-AP	Rabbit Poly	ELISA, FC, IHC, IP, WB
CD3	1 60181-1-Ig	Mouse Mono	ELISA, FC, IHC, WB
CD3	3 17617-1-AP	Rabbit Poly	ELISA, FC, IF, IHC, IP, WB
CD30	55132-1-AP	Rabbit Poly	ELISA, IHC
CD31	3 66065-1-Ig	Mouse Mono	ELISA, IF, IHC, WB
CD31	 16 11265-1-AP	Rabbit Poly	ELISA, FC, IF, IHC, IP, WB
CD33	1 17425-1-AP	Rabbit Poly	ELISA, FC, IF, IHC, WB
CD36	66395-1-Ig	Mouse Mono	ELISA, IHC, WB
CD36	13 18836-1-AP	Rabbit Poly	ELISA, FC, IF, IHC, WB
CD38	60006-1-Ig	Mouse Mono	ELISA, IF, WB
CD38	1 25284-1-AP	Rabbit Poly	ELISA, FC, IHC, WB
CD4	3 11056-2-AP	Rabbit Poly	ELISA, IHC, IP, WB
CD4	19068-1-AP	Rabbit Poly	ELISA, IHC, IP, WB
CD41/Integrin alpha 2b	60350-1-Ig	Mouse Mono	ELISA, WB
CD41/Integrin alpha 2b	18308-1-AP	Rabbit Poly	ELISA, IHC
CD41/Integrin alpha 2b	24552-1-AP	Rabbit Poly	ELISA, IHC, IP, WB

Antibody Name	Cat. No.	Type	Applications
CD42b	3 12860-1-AP	Rabbit Poly	ELISA, IHC, WB
CD43	66224-1-Ig	Mouse Mono	ELISA, IHC, WB
CD43	13959-1-AP	Rabbit Poly	ELISA, IHC, WB
CD44	1 60224-1-Ig	Mouse Mono	ELISA, FC, IF, IHC, WB
CD44	23 15675-1-AP	Rabbit Poly	ELISA, FC, IF, IHC, IP, WB
CD47	66304-1-Ig	Mouse Mono	ELISA, WB
CD47	20305-1-AP	Rabbit Poly	ELISA, IHC, WB
CD5	17227-1-AP	Rabbit Poly	ELISA, IHC, IP, WB
CD52	21809-1-AP	Rabbit Poly	ELISA, IHC
CD58	10878-1-AP	Rabbit Poly	ELISA, WB
CD63	3 25682-1-AP	Rabbit Poly	ELISA, FC, IF, IHC, WB
CD68	1 66231-1-Ig	Mouse Mono	ELISA, FC, IHC
CD68	 16 25747-1-AP	Rabbit Poly	ELISA, FC, IF, IHC, IP, WB
CD69	10803-1-AP	Rabbit Poly	ELISA, IHC, WB
CD7	60209-1-Ig	Mouse Mono	ELISA, IHC
CD7	11320-1-AP	Rabbit Poly	ELISA, IHC
CD71	 66180-1-Ig	Mouse Mono	ELISA, FC, IF, IHC, IP, WB
CD79A	22349-1-AP	Rabbit Poly	ELISA, IHC, WB
CD84	1 12566-1-AP	Rabbit Poly	ELISA, WB
CD8a	17335-1-AP	Rabbit Poly	ELISA, IHC
CD8b	21256-1-AP	Rabbit Poly	ELISA, WB
CD9	60232-1-Ig	Mouse Mono	ELISA, IHC, WB
CD9	1 20597-1-AP	Rabbit Poly	ELISA, FC, IHC, WB
CDH10-specific	19794-1-AP	Rabbit Poly	ELISA, WB
CDH17	60351-1-Ig	Mouse Mono	ELISA, IHC, WB
CDH23	1 13496-1-AP	Rabbit Poly	ELISA, WB
CDON	17634-1-AP	Rabbit Poly	ELISA, WB
CEA	1 10421-1-AP	Rabbit Poly	ELISA, IHC
CEACAM21	17209-1-AP	Rabbit Poly	ELISA, IF, WB
CEACAM3-Specific	19496-1-AP	Rabbit Poly	ELISA, FC, IHC

00 This number shows the amount of times our antibody has been cited in a publication.

More validation images available on our website.



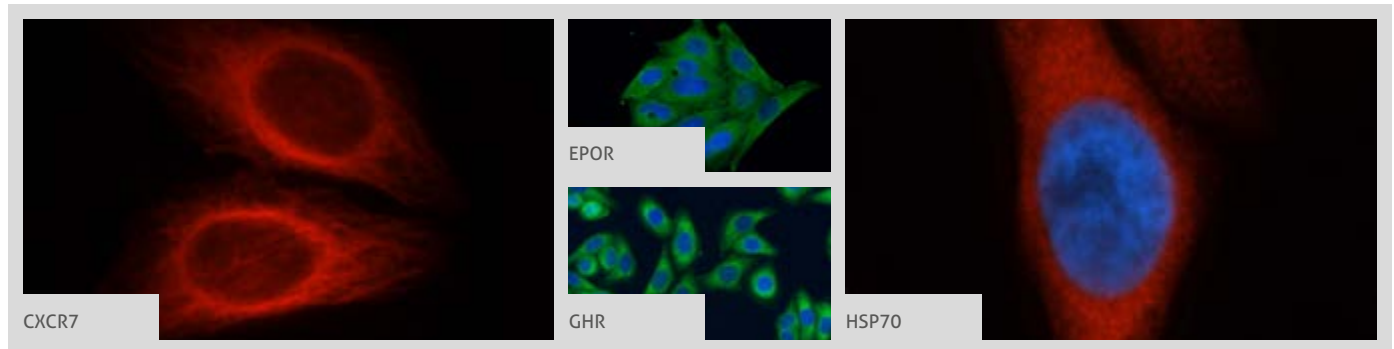
Antibody Name	Cat. No.	Type	Applications
CFD	26050-1-AP	Rabbit Poly	ELISA, WB
CFHR3	2 16583-1-AP	Rabbit Poly	ELISA, IHC, IP, WB
c-FOS	26192-1-AP	Rabbit Poly	ELISA, WB
CFP	17192-1-AP	Rabbit Poly	ELISA, IHC, WB
CHI3L1	1 12036-1-AP	Rabbit Poly	ELISA, IF, IHC
CHL1	25250-1-AP	Rabbit Poly	ELISA, WB
Chromogranin A	60135-1-Ig	Mouse Mono	ELISA, IHC, WB
Chromogranin A	10529-1-AP	Rabbit Poly	ELISA, IHC
Chromogranin A	23342-1-AP	Rabbit Poly	ELISA, IHC
ciAP1	9 10022-1-AP	Rabbit Poly	ELISA, IF, IHC, WB
ciAP2	3 24304-1-AP	Rabbit Poly	ELISA, IF, IHC, IP, WB
c-Kit/CD117	18696-1-AP	Rabbit Poly	ELISA, FC, IF, IHC, WB
CLEC10A/CD301	13590-1-AP	Rabbit Poly	ELISA, WB
CLEC11A	60295-1-Ig	Mouse Mono	ELISA, IHC, WB
CLEC12B	26077-1-AP	Rabbit Poly	ELISA, WB
CLEC14A	23964-1-AP	Rabbit Poly	ELISA, FC, WB
CLEC16A	26257-1-AP	Rabbit Poly	ELISA, WB
CLEC18A	21013-1-AP	Rabbit Poly	ELISA, IHC, WB
CLEC1A	13394-1-AP	Rabbit Poly	ELISA, IHC, WB
CLEC2D	13188-1-AP	Rabbit Poly	ELISA, WB
CLEC3B	20311-1-AP	Rabbit Poly	ELISA, IP, WB
CLEC4C	17941-1-AP	Rabbit Poly	NULL
CLEC4D	18930-1-AP	Rabbit Poly	ELISA, IHC
CLEC4G	66233-1-Ig	Mouse Mono	ELISA, WB
CLEC4G	18173-1-AP	Rabbit Poly	ELISA, IHC, WB
CLEC4M	22003-1-AP	Rabbit Poly	ELISA, IHC, WB
CLMP	16127-1-AP	Rabbit Poly	ELISA, WB
Clusterin	66109-1-Ig	Mouse Mono	ELISA, IHC, WB
Clusterin	2 12289-1-AP	Rabbit Poly	ELISA, IHC, IP, WB
CNTRF	10796-1-AP	Rabbit Poly	ELISA, WB
CNTN1	1 13843-1-AP	Rabbit Poly	ELISA, IP, WB

Antibody Name	Cat. No.	Type	Applications
CNTN4	12777-1-AP	Rabbit Poly	ELISA, WB
COLEC11	3 15269-1-AP	Rabbit Poly	ELISA, FC, IF, IHC, IP, WB
Complement factor B	66154-1-Ig	Mouse Mono	ELISA, IHC, WB
Complement factor B	2 10170-1-AP	Rabbit Poly	ELISA, IHC, WB
Complement factor H	12748-1-AP	Rabbit Poly	ELISA, IP, WB
CR1	55092-1-AP	Rabbit Poly	ELISA, IHC
CRCP	14348-1-AP	Rabbit Poly	ELISA, FC, IHC, IP, WB
CRP	66250-1-Ig	Mouse Mono	ELISA, IHC, WB
CRP	1 24175-1-AP	Rabbit Poly	ELISA, IHC, WB
CSF1R	25949-1-AP	Rabbit Poly	ELISA, IHC
CSF2RA/CD116	18307-1-AP	Rabbit Poly	ELISA, IHC, WB
c-SRC	1 60315-1-Ig	Mouse Mono	ELISA, IF, IHC, WB
c-SRC	25978-1-AP	Rabbit Poly	ELISA, IHC, WB
CX3CL1	60339-1-Ig	Mouse Mono	ELISA, IHC, WB
CX3CL1	2 10108-2-AP	Rabbit Poly	ELISA, IHC, WB
CX3CR1	1 13885-1-AP	Rabbit Poly	ELISA, FC, IHC, IP, WB
CXADR	11777-1-AP	Rabbit Poly	ELISA, IHC, WB
CXCL11	10707-1-AP	Rabbit Poly	ELISA, WB
CXCL12	2 17402-1-AP	Rabbit Poly	ELISA, IF, IHC
CXCL13/BCA1	2 10927-1-AP	Rabbit Poly	ELISA, IF, IHC, WB
CXCL14	3 10468-1-AP	Rabbit Poly	ELISA, IHC, WB
CXCL16	60123-1-Ig	Mouse Mono	ELISA, WB
CXCL16	13902-1-AP	Rabbit Poly	ELISA, IF, IHC, WB
CXCL17	18108-1-AP	Rabbit Poly	ELISA, IHC
CXCL8/IL8	2 60141-2-Ig	Mouse Mono	ELISA, IHC, WB
CXCR1	55450-1-AP	Rabbit Poly	ELISA, IP, WB
CXCR2	20634-1-AP	Rabbit Poly	ELISA, IF, IP, WB
CXCR3	26756-1-AP	Rabbit Poly	ELISA, IHC, WB
CXCR3B-specific	5 60065-1-Ig	Mouse Mono	ELISA, FC, IF, IHC, WB
CXCR4	3 60042-1-Ig	Mouse Mono	ELISA, FC, WB

00 This number shows the amount of times our antibody has been cited in a publication.

CXCR4
→ FGFR4

More validation images available on our website. 



Antibody Name	Cat. No.	Type	Applications
CXCR4	3 11073-2-AP	Rabbit Poly	ELISA, IP, WB
CXCR7	60216-1-Ig	Mouse Mono	ELISA, IHC, WB
CXCR7	1 20423-1-AP	Rabbit Poly	ELISA, FC, IF, IP, WB
CXCR7	6 51024-1-AP	Rabbit Poly	ELISA, FC, IF, IHC, WB
CXCR7-Specific	14840-1-AP	Rabbit Poly	ELISA, IHC, IP, WB
CYLD	4 11110-1-AP	Rabbit Poly	ELISA, IHC, IP, WB
DAK	12224-1-AP	Rabbit Poly	ELISA, IP, WB
DCD	11985-1-AP	Rabbit Poly	ELISA, IHC
DcR2	2 16781-1-AP	Rabbit Poly	ELISA, IHC, WB
DDX3	11115-1-AP	Rabbit Poly	ELISA, IF, IHC, IP, WB
DDX58	4 20566-1-AP	Rabbit Poly	ELISA, IF, IP, WB
DDX58	25068-1-AP	Rabbit Poly	ELISA, IHC, IP, WB
DEFA1	18057-1-AP	Rabbit Poly	ELISA, IHC, WB
DEFB1	14738-1-AP	Rabbit Poly	ELISA, IHC
DEFB121	25761-1-AP	Rabbit Poly	ELISA, IHC
Desmocollin 2	60239-1-Ig	Mouse Mono	ELISA, WB
Desmocollin 2	13876-1-AP	Rabbit Poly	ELISA, IHC
DR3	55397-1-AP	Rabbit Poly	ELISA, WB
DR4	1 24063-1-AP	Rabbit Poly	ELISA, WB
DR5-Specific	15497-1-AP	Rabbit Poly	ELISA, WB
DSG1	24587-1-AP	Rabbit Poly	ELISA, IF, IHC
DSG2	2 21880-1-AP	Rabbit Poly	ELISA, IF, IP, WB
DSG4	23087-1-AP	Rabbit Poly	ELISA, WB
EBI3	66354-1-Ig	Mouse Mono	ELISA, WB
EBI3	12371-1-AP	Rabbit Poly	ELISA, IP, WB
E-cadherin	60335-1-Ig	Mouse Mono	ELISA, IF, IHC, WB
E-cadherin	3 20648-1-AP	Rabbit Poly	ELISA, FC, IF, IHC, WB
E-cadherin	71 20874-1-AP	Rabbit Poly	ELISA, FC, IF, IHC, IP, WB
EDA	25892-1-AP	Rabbit Poly	ELISA, IHC, WB
ELA2	17943-1-AP	Rabbit Poly	ELISA, IP

Antibody Name	Cat. No.	Type	Applications
Eotaxin	11786-1-AP	Rabbit Poly	ELISA, WB
EPO	17908-1-AP	Rabbit Poly	ELISA, IHC, WB
EPOR	6 55308-1-AP	Rabbit Poly	ELISA, FC, IF, IP, WB
ERMAP	21375-1-AP	Rabbit Poly	ELISA, IF, IP, WB
ESAM	12445-1-AP	Rabbit Poly	ELISA, WB
E-selectin/ CD62E	2 20894-1-AP	Rabbit Poly	ELISA, FC, WB
EXOSC1	12585-1-AP	Rabbit Poly	ELISA, IHC, WB
EXOSC4	1 15937-1-AP	Rabbit Poly	ELISA, IF, IHC, WB
F4/80	9 18705-1-AP	Rabbit Poly	ELISA, IHC, WB
FADD	2 14906-1-AP	Rabbit Poly	ELISA, IF, IHC, IP, WB
FAS/CD95	60196-1-Ig	Mouse Mono	ELISA, FC, IHC, WB
FAS/CD95	17 13098-1-AP	Rabbit Poly	ELISA, FC, IF, IHC, IP, WB
Fc epsilon RI alpha	3 10980-1-AP	Rabbit Poly	ELISA, IHC, WB
FCGR2B	21541-1-AP	Rabbit Poly	IHC, WB
FCN1	11775-1-AP	Rabbit Poly	ELISA, WB
FCN3	11867-1-AP	Rabbit Poly	ELISA, WB
FGF1	17400-1-AP	Rabbit Poly	ELISA, IHC
FGF12	60152-1-Ig	Mouse Mono	ELISA, WB
FGF12	13784-1-AP	Rabbit Poly	ELISA, IHC, WB
FGF13	1 13201-1-AP	Rabbit Poly	ELISA, IHC, WB
FGF13	26235-1-AP	Rabbit Poly	ELISA, WB
FGF16-Specific	16876-1-AP	Rabbit Poly	ELISA, IHC, WB
FGF17	25314-1-AP	Rabbit Poly	ELISA, IF, WB
FGF18	60341-1-Ig	Mouse Mono	ELISA, WB
FGF18	11495-1-AP	Rabbit Poly	ELISA, IF, WB
FGF21	26272-1-AP	Rabbit Poly	ELISA, IHC, WB
FGF3-Specific	16874-1-AP	Rabbit Poly	ELISA, IHC
FGF5	1 18171-1-AP	Rabbit Poly	ELISA, IF, IHC, IP, WB
FGF8	1 20711-1-AP	Rabbit Poly	ELISA, IHC, WB
FGFR4	11098-1-AP	Rabbit Poly	ELISA, IF, IHC, WB

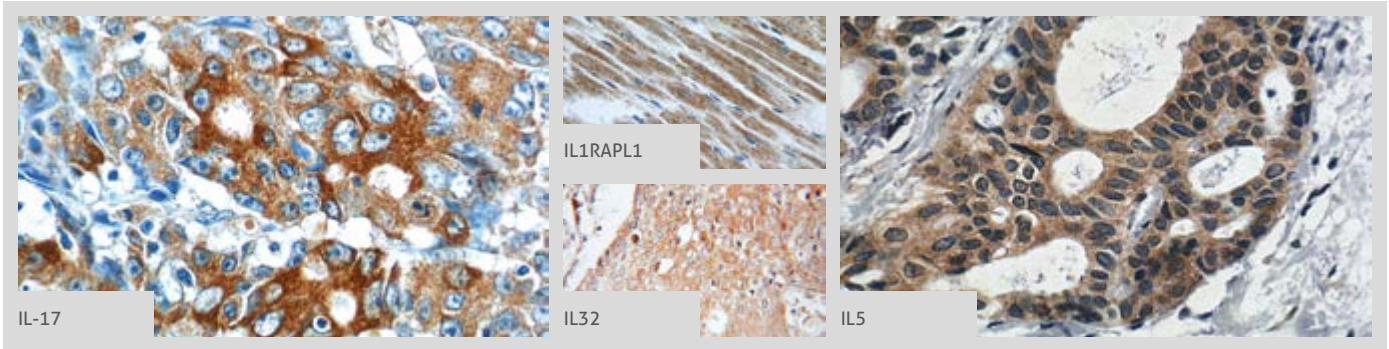
00 This number shows the amount of times our antibody has been cited in a publication.

Antibody Name	Cat. No.	Type	Applications
Galectin 9	1 17938-1-AP	Rabbit Poly	ELISA, IP, WB
GALP	25116-1-AP	Rabbit Poly	ELISA, WB
GBP5	4 13220-1-AP	Rabbit Poly	ELISA, FC, IF, IHC, WB
G-CSF	17185-1-AP	Rabbit Poly	ELISA, IF, IHC, WB
G-CSFR	18310-1-AP	Rabbit Poly	ELISA, FC, WB
GHR	2 20713-1-AP	Rabbit Poly	ELISA, IF, WB
GM-CSF	17762-1-AP	Rabbit Poly	ELISA, IF, IHC, WB
GP9	14564-1-AP	Rabbit Poly	ELISA, IHC, WB
GPR116	14047-1-AP	Rabbit Poly	ELISA, IHC, WB
GPR44	25264-1-AP	Rabbit Poly	ELISA, IHC
GRO alpha	8 12335-1-AP	Rabbit Poly	ELISA, IF, IHC, WB
GZMB	2 13588-1-AP	Rabbit Poly	ELISA, IF, IHC, WB
HAPLN4	21228-1-AP	Rabbit Poly	ELISA, IHC, WB
Haptoglobin	2 16665-1-AP	Rabbit Poly	ELISA, IHC, IP, WB
HEPACAM	8 18177-1-AP	Rabbit Poly	ELISA, IF, IHC, IP, WB
HERC5	22692-1-AP	Rabbit Poly	ELISA, IP
Histone H2B	2 15857-1-AP	Rabbit Poly	ELISA, IHC, IP, WB
HLA class I (HLA-A)	2 66013-1-Ig	Mouse Mono	ELISA, FC, IHC, WB
HLA class I (HLA-A)	3 15240-1-AP	Rabbit Poly	ELISA, FC, IF, IHC, IP, WB
HLA class I (HLA-B)	17260-1-AP	Rabbit Poly	ELISA, IF, IHC, IP, WB
HLA class I (HLA-C)	15777-1-AP	Rabbit Poly	ELISA, IF, IHC, IP, WB
HLA-A	55383-1-AP	Rabbit Poly	ELISA, IHC, WB
HLA-DMA	11838-1-AP	Rabbit Poly	ELISA, WB
HLA-DMB	21704-1-AP	Rabbit Poly	ELISA, IHC, WB
HLA-DPA1	16109-1-AP	Rabbit Poly	ELISA, WB
HLA-DPB1	11298-1-AP	Rabbit Poly	ELISA, IHC
HLA-DQA1	1 16918-1-AP	Rabbit Poly	ELISA, IHC, WB
HLA-DQA2	55072-1-AP	Rabbit Poly	ELISA, WB
HLA-DQB2	17315-1-AP	Rabbit Poly	ELISA, WB
HLA-DRA	17221-1-AP	Rabbit Poly	ELISA, IHC, WB
HLA-DRB1	1 15862-1-AP	Rabbit Poly	ELISA, IP, WB
HLA-DRB4	15733-1-AP	Rabbit Poly	ELISA, WB
HLA-DRB5	21702-1-AP	Rabbit Poly	ELISA, IHC, WB
HLA-E	15008-1-AP	Rabbit Poly	ELISA, WB
HLA-F	5 14670-1-AP	Rabbit Poly	ELISA, IHC, WB
HLA-F	55379-1-AP	Rabbit Poly	ELISA, WB
HLA-G	66447-1-Ig	Mouse Mono	IHC, WB
HLA-G	16913-1-AP	Rabbit Poly	WB

Antibody Name	Cat. No.	Type	Applications
HP	66229-1-Ig	Mouse Mono	ELISA, WB
HSP70	1 66183-1-Ig	Mouse Mono	ELISA, IF, IHC, WB
HSP70	8 10995-1-AP	Rabbit Poly	ELISA, FC, IF, IHC, IP, WB
HSP70	1 25405-1-AP	Rabbit Poly	ELISA, IP, WB
HSPA1L	13970-1-AP	Rabbit Poly	ELISA, IF, IHC, IP, WB
HSPG2-Specific	1 19675-1-AP	Rabbit Poly	ELISA, WB
HVEM/TNFRSF14	10138-1-AP	Rabbit Poly	NULL
ICAM-1	5 60299-1-Ig	Mouse Mono	ELISA, FC, IF, IHC, WB
ICAM-1	FITC-60299	Mouse Mono	NULL
ICAM-1	13 10831-1-AP	Rabbit Poly	ELISA, FC, IHC, IP, WB
ICAM-1	1 15364-1-AP	Rabbit Poly	ELISA, FC, IHC, IP, WB
ICAM2	2 10121-2-AP	Rabbit Poly	ELISA, IHC, WB
ICAM3	17699-1-AP	Rabbit Poly	ELISA, FC, IHC, WB
ICAM5	1 12759-1-AP	Rabbit Poly	ELISA, IP, WB
ICOS	13338-1-AP	Rabbit Poly	ELISA, WB
IFIH1	4 21775-1-AP	Rabbit Poly	ELISA, IHC, IP, WB
IFNA6	24811-1-AP	Rabbit Poly	ELISA, WB
IFNAR1	2 13083-1-AP	Rabbit Poly	ELISA, FC, WB
IFNAR2	10522-1-AP	Rabbit Poly	ELISA, FC, WB
IFNGR1	1 10808-1-AP	Rabbit Poly	ELISA, FC, IHC, IP, WB
IFNGR2	10266-1-AP	Rabbit Poly	ELISA, FC, IP, WB
IGF1A-Specific	8 20214-1-AP	Rabbit Poly	ELISA, IF, IHC, IP, WB
IGF1B-Specific	20215-1-AP	Rabbit Poly	ELISA, IHC, WB
IGFBP7	19961-1-AP	Rabbit Poly	ELISA, IHC, IP, WB
IGSF11	14003-1-AP	Rabbit Poly	ELISA, IHC, WB
IkB alpha	66418-1-Ig	Mouse Mono	ELISA, IHC, WB
IkB alpha	31 10268-1-AP	Rabbit Poly	ELISA, FC, IF, IHC, IP, WB
IkB alpha	3 18220-1-AP	Rabbit Poly	ELISA, IF, IHC, IP, WB
IkB alpha	2 51066-1-AP	Rabbit Poly	ELISA, IHC, IP, WB
IkB beta	12660-1-AP	Rabbit Poly	ELISA, IF, IHC, WB
IKBKB	65036-1-Ig	Mouse Mono	ELISA, IHC
IKBKB	3 15649-1-AP	Rabbit Poly	ELISA, IF, WB
IKBKB	2 20979-1-AP	Rabbit Poly	ELISA, IF, IHC, WB
IKBKG	66460-1-Ig	Mouse Mono	ELISA, WB
IKBKG	5 18474-1-AP	Rabbit Poly	ELISA, IF, IHC, WB
IL1 alpha	16765-1-AP	Rabbit Poly	ELISA, IF, WB
IL1 beta	22 16806-1-AP	Rabbit Poly	ELISA, IF, IHC, WB
IL-10	1 60269-1-Ig	Mouse Mono	ELISA, IHC, WB

IL-10
→ IL6R

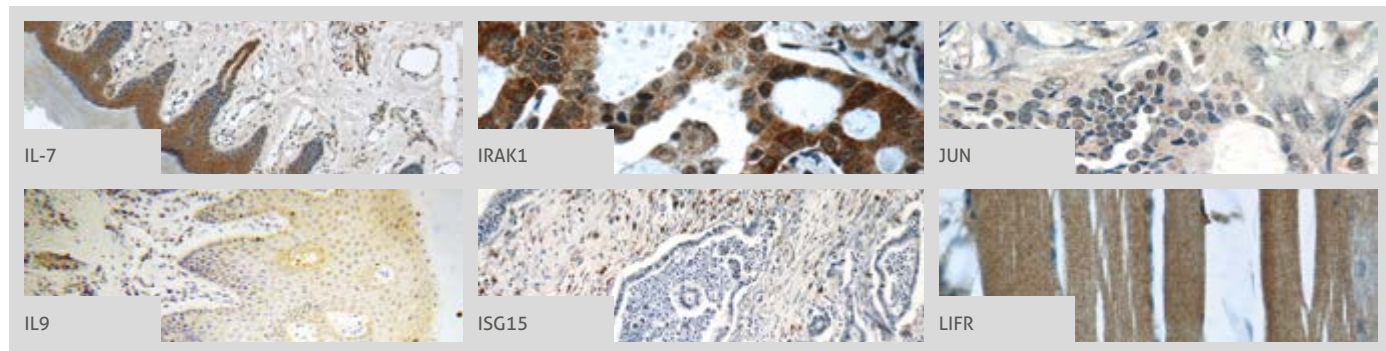
More validation images available on our website. 



Antibody Name	Cat. No.	Type	Applications
IL-10	2 20850-1-AP	Rabbit Poly	ELISA, IHC, WB
IL10RA	13356-1-AP	Rabbit Poly	ELISA, FC, WB
IL10RB	15102-1-AP	Rabbit Poly	ELISA, WB
IL10RB	19387-1-AP	Rabbit Poly	ELISA, WB
IL11	55169-1-AP	Rabbit Poly	ELISA, WB
IL11RA	1 10264-1-AP	Rabbit Poly	ELISA, FC, IF
IL12A	60324-1-Ig	Mouse Mono	ELISA, IHC, WB
IL-12B	17645-1-AP	Rabbit Poly	ELISA, WB
IL12B	66288-1-Ig	Mouse Mono	ELISA, WB
IL12RB1	1 13287-1-AP	Rabbit Poly	ELISA, IF, IHC, IP, WB
IL13RA2	2 11059-1-AP	Rabbit Poly	ELISA, IF, IHC, WB
IL-16	66145-1-Ig	Mouse Mono	ELISA, WB
IL-17	1 66148-1-Ig	Mouse Mono	ELISA, FC, WB
IL-17	 7 13082-1-AP	Rabbit Poly	ELISA, IF, IHC, IP, WB
IL-19	60278-1-Ig	Mouse Mono	ELISA, IHC, WB
IL-19	23705-1-AP	Rabbit Poly	ELISA, IHC
IL-19	24402-1-AP	Rabbit Poly	ELISA, IHC, WB
IL-1F6/IL-36 α	24173-1-AP	Rabbit Poly	ELISA, IHC, WB
IL1F8	60290-1-Ig	Mouse Mono	ELISA, IHC, WB
IL1R2	60262-1-Ig	Mouse Mono	ELISA, IF, WB
IL1R2	13591-1-AP	Rabbit Poly	ELISA, WB
IL1RAPL1	 21609-1-AP	Rabbit Poly	ELISA, FC, IF, IHC, IP, WB
IL2	1 60306-1-Ig	Mouse Mono	ELISA, WB
IL20	18104-1-AP	Rabbit Poly	ELISA, WB
IL20RB	60221-1-Ig	Mouse Mono	ELISA, WB
IL20RB	20521-1-AP	Rabbit Poly	ELISA, FC, IF, WB
IL21	1 17625-1-AP	Rabbit Poly	ELISA, WB
IL21R	66319-1-Ig	Mouse Mono	ELISA, IHC, WB
IL21R	10533-1-AP	Rabbit Poly	ELISA, FC, IHC, IP, WB
IL22RA1	13462-1-AP	Rabbit Poly	ELISA, FC, IF, WB
IL22RA2	66190-1-Ig	Mouse Mono	ELISA, IHC, WB

Antibody Name	Cat. No.	Type	Applications
IL22RA2	22861-1-AP	Rabbit Poly	ELISA, FC, WB
IL23A	1 66196-1-Ig	Mouse Mono	ELISA, IHC, WB
IL24	26772-1-AP	Rabbit Poly	ELISA, IHC, WB
IL-27	66164-1-Ig	Mouse Mono	ELISA, IHC, WB
IL-27	24165-1-AP	Rabbit Poly	ELISA, IHC, WB
IL-28A	60270-1-Ig	Mouse Mono	ELISA, IHC, WB
IL-28A	22646-1-AP	Rabbit Poly	ELISA, WB
IL28B/IFNL3	24199-1-AP	Rabbit Poly	ELISA, WB
IL-29	66163-1-Ig	Mouse Mono	ELISA, WB
IL-29	17995-1-AP	Rabbit Poly	ELISA, WB
IL2RB	13602-1-AP	Rabbit Poly	ELISA, WB
IL2RG	11409-1-AP	Rabbit Poly	ELISA, FC, WB
IL3	17835-1-AP	Rabbit Poly	ELISA, IHC, WB
IL31	1 22859-1-AP	Rabbit Poly	ELISA, IHC, WB
IL32	 11079-1-AP	Rabbit Poly	ELISA, IHC, WB
IL33	66235-1-Ig	Mouse Mono	ELISA, IF, IHC, WB
IL33	3 12372-1-AP	Rabbit Poly	ELISA, IF, IHC, WB
IL36 gamma	24723-1-AP	Rabbit Poly	ELISA, WB
IL36B	18043-1-AP	Rabbit Poly	ELISA, WB
IL-36 γ /IL-1F9	1 21255-1-AP	Rabbit Poly	ELISA, IHC, WB
IL37	1 60296-1-Ig	Mouse Mono	ELISA, IHC, WB
IL37	11863-1-AP	Rabbit Poly	ELISA, WB
IL3RA	13655-1-AP	Rabbit Poly	ELISA, WB
IL-4	1 66142-1-Ig	Mouse Mono	ELISA, IHC, WB
IL-4	16545-1-AP	Rabbit Poly	ELISA, WB
IL5	 26677-1-AP	Rabbit Poly	ELISA, IHC, WB
IL5RA	12655-1-AP	Rabbit Poly	ELISA, IF, IHC, WB
IL-6	1 66146-1-Ig	Mouse Mono	ELISA, IHC, WB
IL-6	19831-1-AP	Rabbit Poly	ELISA, WB
IL-6	24 21865-1-AP	Rabbit Poly	ELISA, IHC, WB
IL6R	1 23457-1-AP	Rabbit Poly	ELISA, IP, WB

More validation images available on our website.



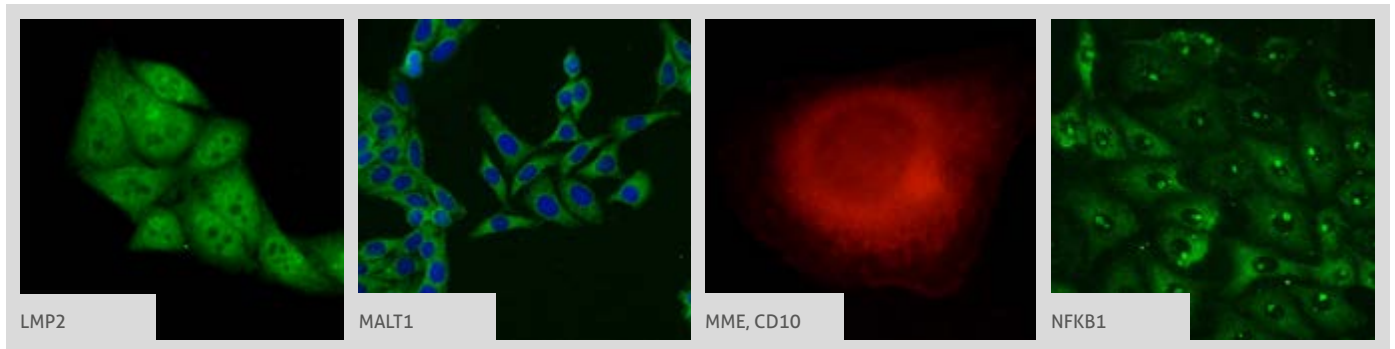
Antibody Name	Cat. No.	Type	Applications
IL-7	60206-1-Ig	Mouse Mono	ELISA, FC, IF, IHC, WB
IL9	66144-1-Ig	Mouse Mono	ELISA, IHC, WB
IL9	17689-1-AP	Rabbit Poly	ELISA, IHC, WB
Integrin alpha-1	22146-1-AP	Rabbit Poly	ELISA, FC, IHC, WB
Integrin alpha-3	66070-1-Ig	Mouse Mono	ELISA, FC, IF, WB
Integrin alpha-3	21992-1-AP	Rabbit Poly	ELISA, FC, IF, IP, WB
Integrin alpha-4	19676-1-AP	Rabbit Poly	ELISA, IHC, WB
Integrin alpha-5	10569-1-AP	Rabbit Poly	ELISA, IF, WB
Integrin alpha-6	27189-1-AP	Rabbit Poly	ELISA, IHC, WB
Integrin alpha-9	14593-1-AP	Rabbit Poly	ELISA, IF, WB
Integrin beta-1	66315-1-Ig	Mouse Mono	ELISA, WB
Integrin beta-1	12594-1-AP	Rabbit Poly	ELISA, IHC, WB
Integrin beta-1	26918-1-AP	Rabbit Poly	ELISA, IHC, WB
Integrin beta-3	18309-1-AP	Rabbit Poly	ELISA, IHC, WB
Integrin beta-4	21738-1-AP	Rabbit Poly	ELISA, FC, IF, IHC, IP, WB
Integrin beta-5	10925-1-AP	Rabbit Poly	NULL
Integrin beta-6	21703-1-AP	Rabbit Poly	ELISA, IHC
Integrin beta-6-Specific	19695-1-AP	Rabbit Poly	ELISA, IF, IHC, WB
Integrin beta-7	11328-1-AP	Rabbit Poly	ELISA, IF, IHC, WB
Interferon alpha	66162-1-Ig	Mouse Mono	ELISA, WB
Interferon alpha	18013-1-AP	Rabbit Poly	ELISA, WB
Interferon gamma	15365-1-AP	Rabbit Poly	ELISA, IF, IHC, WB
IRAK1	10478-2-AP	Rabbit Poly	ELISA, FC, IF, IHC, IP, WB
IRAK4	18221-1-AP	Rabbit Poly	ELISA, IP, WB
IRF1	11335-1-AP	Rabbit Poly	ELISA, IF, IHC, WB
IRF3	11312-1-AP	Rabbit Poly	ELISA, FC, IF, IHC, IP, WB

Antibody Name	Cat. No.	Type	Applications
IRF7	22392-1-AP	Rabbit Poly	ELISA, IHC, IP, WB
ISG15	15981-1-AP	Rabbit Poly	ELISA, IF, IHC, IP, WB
ITGA6X1A	20231-1-AP	Rabbit Poly	ELISA, WB
ITGA6X1B	20232-1-AP	Rabbit Poly	ELISA, IF, WB
ITGB4	25277-1-AP	Rabbit Poly	ELISA, IHC, WB
ITLN1	11770-1-AP	Rabbit Poly	ELISA, IHC, IP, WB
JAM2	12972-1-AP	Rabbit Poly	ELISA, WB
JAML	21302-1-AP	Rabbit Poly	ELISA, FC, IF, IHC, WB
JNK	66210-1-Ig	Mouse Mono	ELISA, IF, IHC, WB
JNK	10023-1-AP	Rabbit Poly	ELISA, IF, IHC, IP, WB
JNK	24164-1-AP	Rabbit Poly	ELISA, IF, IHC, IP, WB
JNK	51151-1-AP	Rabbit Poly	ELISA, IF, IP, WB
JNK2	17337-1-AP	Rabbit Poly	ELISA, IF, WB
JUN	66313-1-Ig	Mouse Mono	ELISA, WB
JUN	24909-1-AP	Rabbit Poly	ELISA, IF, IHC, IP, WB
KIRREL2	10890-1-AP	Rabbit Poly	ELISA, WB
KLRF1	21510-1-AP	Rabbit Poly	ELISA, IHC, WB
KLRG1	10974-1-AP	Rabbit Poly	ELISA, IHC, WB
Lactoferrin	10933-1-AP	Rabbit Poly	ELISA, IHC, IP, WB
LAMP1	21997-1-AP	Rabbit Poly	ELISA, IF, IHC, IP, WB
LAMP1	55273-1-AP	Rabbit Poly	ELISA, IF, WB
Langerin	11841-1-AP	Rabbit Poly	ELISA, WB
LBP	66181-1-Ig	Mouse Mono	ELISA, IHC, WB
LBP	11836-1-AP	Rabbit Poly	ELISA, FC, IF, IHC, IP, WB
LBP	23559-1-AP	Rabbit Poly	ELISA, WB
LEPR	20966-1-AP	Rabbit Poly	ELISA, FC, IF, IHC, IP, WB
LGP2	11355-1-AP	Rabbit Poly	ELISA, IHC, IP, WB
LIF	26757-1-AP	Rabbit Poly	ELISA, IHC, WB
LIFR	22779-1-AP	Rabbit Poly	ELISA, FC, IHC, IP, WB
LIMPII	27102-1-AP	Rabbit Poly	ELISA, IHC, WB

00 This number shows the amount of times our antibody has been cited in a publication.

LMP2
→ NFKB2

More validation images available on our website. 

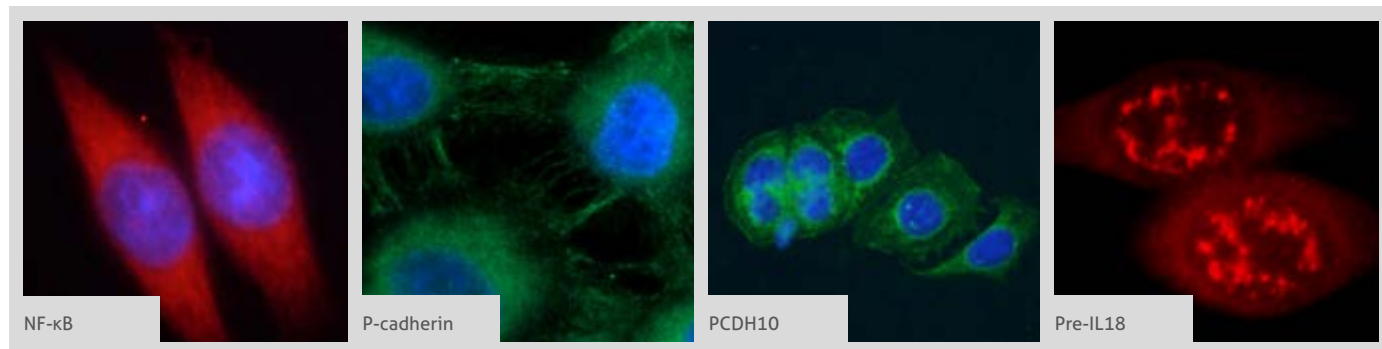


Antibody Name	Cat. No.	Type	Applications
LMP2  2	14544-1-AP	Rabbit Poly	ELISA, IF, IHC, IP, WB
LMP7	14859-1-AP	Rabbit Poly	ELISA, FC, IF, IHC, IP, WB
LPO	10376-1-AP	Rabbit Poly	ELISA, IHC, WB
LSAMP	13600-1-AP	Rabbit Poly	ELISA, WB
LSM14A	18336-1-AP	Rabbit Poly	ELISA, IF, IHC, WB
LTBR 1	20331-1-AP	Rabbit Poly	ELISA, FC, IHC, WB
L-VEGFA 1	22341-1-AP	Rabbit Poly	ELISA, WB
Lysozyme	66456-1-Ig	Mouse Mono	ELISA, WB
Lysozyme	15013-1-AP	Rabbit Poly	ELISA, IHC, WB
MAdCAM1	21917-1-AP	Rabbit Poly	ELISA, IHC
MAG	14386-1-AP	Rabbit Poly	ELISA, IHC, WB
MALT1	66225-1-Ig	Mouse Mono	ELISA, IF, IHC, WB
MALT1 	11660-1-AP	Rabbit Poly	ELISA, FC, IF, IHC, WB
MAPK10 1	17572-1-AP	Rabbit Poly	ELISA, IF, WB
MAPK11 1	17376-1-AP	Rabbit Poly	ELISA, IHC, WB
MAPK12 1	20184-1-AP	Rabbit Poly	ELISA, IHC, IP, WB
MAPK13	60252-1-Ig	Mouse Mono	ELISA, WB
MAVS; VISA 3	14341-1-AP	Rabbit Poly	ELISA, IF, IHC, IP, WB
MBL2	24207-1-AP	Rabbit Poly	ELISA, IHC, WB
MCP1 1	25542-1-AP	Rabbit Poly	ELISA, FC, IF, WB
MCSF 1	14779-1-AP	Rabbit Poly	ELISA, IP, WB
MEK3 1	13898-1-AP	Rabbit Poly	ELISA, IP, WB
MEK4 2	17340-1-AP	Rabbit Poly	ELISA, IHC, WB
MEK4	51142-1-AP	Rabbit Poly	ELISA, IHC, WB
MEK6	12745-1-AP	Rabbit Poly	ELISA, FC, IHC, WB
MEK6	51094-1-AP	Rabbit Poly	ELISA, WB
MICA	66384-1-Ig	Mouse Mono	ELISA, IHC, WB
MICA	12619-1-AP	Rabbit Poly	ELISA, WB
MICB	14325-1-AP	Rabbit Poly	ELISA, IHC, WB
MIG	22355-1-AP	Rabbit Poly	ELISA, IHC, WB
MIP-3-beta 2	13397-1-AP	Rabbit Poly	ELISA, IF, IHC, WB

Antibody Name	Cat. No.	Type	Applications
MIP-3α	26527-1-AP	Rabbit Poly	ELISA, IHC
MKK7 1	55030-1-AP	Rabbit Poly	ELISA, IF, IHC, WB
MME, CD10	60034-3-Ig	Mouse Mono	ELISA, IHC, WB
MME, CD10 1	10302-1-AP	Rabbit Poly	ELISA, FC, IHC, WB
MME, CD10 2	18008-1-AP	Rabbit Poly	ELISA, FC, IHC, IP, WB
MME, CD10 	23898-1-AP	Rabbit Poly	ELISA, FC, IF, WB
MOG 3	12690-1-AP	Rabbit Poly	ELISA, WB
MPZ, P0 5	10572-1-AP	Rabbit Poly	ELISA, IF, IHC, WB
MPZL1	13158-1-AP	Rabbit Poly	ELISA, WB
MPZL2 4	11787-1-AP	Rabbit Poly	ELISA, FC, IHC, WB
MPZL3	25513-1-AP	Rabbit Poly	ELISA, WB
MYBPC1	22900-1-AP	Rabbit Poly	ELISA, IHC, WB
MYBPC3 1	19977-1-AP	Rabbit Poly	ELISA, WB
MYD88 4	23230-1-AP	Rabbit Poly	ELISA, IF, IHC, WB
NAIP	55153-1-AP	Rabbit Poly	ELISA, WB
NALP1	24792-1-AP	Rabbit Poly	ELISA, IHC
NALP3 11	19771-1-AP	Rabbit Poly	ELISA, IF, IHC, WB
N-cadherin 1	66219-1-Ig	Mouse Mono	ELISA, IF, IHC, WB
N-cadherin 33	13769-1-AP	Rabbit Poly	ELISA, IF, IHC, WB
N-cadherin 1	22018-1-AP	Rabbit Poly	ELISA, FC, IHC, IP, WB
NCAM1/CD56	60238-1-Ig	Mouse Mono	ELISA, IHC, WB
NCAM1/CD56 5	14255-1-AP	Rabbit Poly	ELISA, FC, IF, IHC, WB
NCAM2	13850-1-AP	Rabbit Poly	ELISA, IHC, IP, WB
Nectin 2 1	10100-2-AP	Rabbit Poly	ELISA, FC, IF, WB
Neogenin-Specific 1	20246-1-AP	Rabbit Poly	ELISA, WB
Neurofascin	26351-1-AP	Rabbit Poly	ELISA, IHC, WB
NFKB1 	23576-1-AP	Rabbit Poly	ELISA, IF, IHC, WB
NFKB1, p105, p50-Specific	15506-1-AP	Rabbit Poly	ELISA, WB
NFKB2 2	10409-2-AP	Rabbit Poly	ELISA, IF, IHC, IP, WB
NFKB2	51085-1-AP	Rabbit Poly	ELISA, WB

00 This number shows the amount of times our antibody has been cited in a publication.

More validation images available on our website.



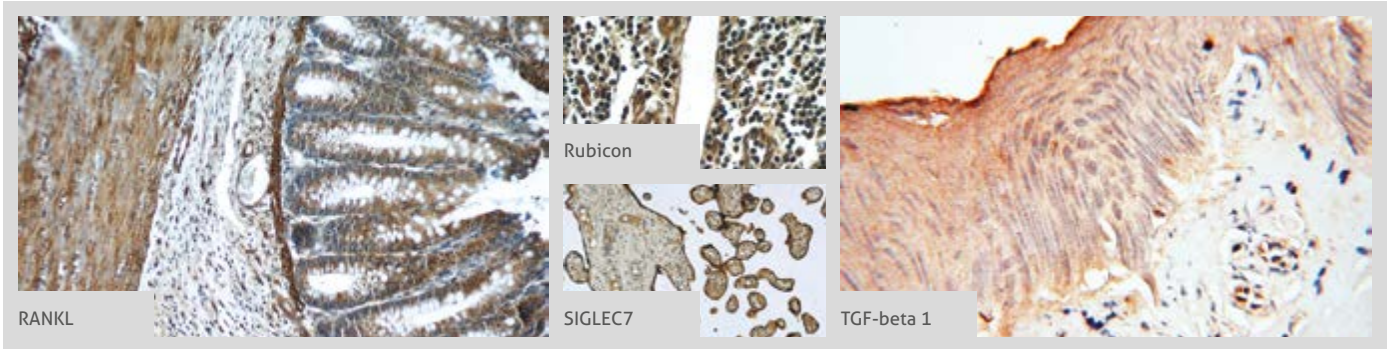
Antibody Name	Cat. No.	Type	Applications
NFKB2, p52, p100-Specific	15503-1-AP	Rabbit Poly	ELISA, IHC, WB
NFKBIE	11273-1-AP	Rabbit Poly	ELISA, WB
NF-κB	18 14220-1-AP	Rabbit Poly	ELISA, IF, IP, WB
NLRP1	1 12256-1-AP	Rabbit Poly	ELISA, IHC, WB
NLRP2	15182-1-AP	Rabbit Poly	ELISA, IHC, WB
NLRX1	4 17215-1-AP	Rabbit Poly	ELISA, IF, IHC, IP, WB
NOD2	6 20980-1-AP	Rabbit Poly	ELISA, IHC, WB
NPTX1	20656-1-AP	Rabbit Poly	ELISA, IF, WB
NPTX2	2 10889-1-AP	Rabbit Poly	ELISA, ICC, IHC, IP, WB
NRCAM	1 21608-1-AP	Rabbit Poly	ELISA, IF, IHC, WB
NRG1	10527-1-AP	Rabbit Poly	ELISA, IF, IHC, IP, WB
NTM	14373-1-AP	Rabbit Poly	ELISA, WB
OLR1	1 11837-1-AP	Rabbit Poly	ELISA, FC, IHC, IP, WB
OPTN	60293-1-Ig	Mouse Mono	ELISA, IHC, WB
OPTN	Biotin -60293	Mouse Mono	NULL
OPTN	11 10837-1-AP	Rabbit Poly	ELISA, FC, IF, IHC, IP, WB
OSM	20345-1-AP	Rabbit Poly	ELISA, IF, WB
OSMR	2 10982-1-AP	Rabbit Poly	ELISA, IHC, WB
OTUD5	21002-1-AP	Rabbit Poly	ELISA, IF, WB
p38 MAPK	66234-1-Ig	Mouse Mono	ELISA, IHC, WB
p38	16 14064-1-AP	Rabbit Poly	ELISA, IF, IHC, WB
p65; RELA	100 10745-1-AP	Rabbit Poly	ELISA, FC, IF, IHC, IP, WB
p75NTR	3 55014-1-AP	Rabbit Poly	ELISA, FC, IF, IHC, IP, WB
Palladin	42 10853-1-AP	Rabbit Poly	ELISA, FC, IF, IHC, IP, WB
Palladin-Specific	16179-1-AP	Rabbit Poly	ELISA, IP, WB
P-cadherin	66295-1-Ig	Mouse Mono	ELISA, IHC, WB
P-cadherin	13773-1-AP	Rabbit Poly	ELISA, FC, IF, IHC, IP, WB
PCBP2	1 15070-1-AP	Rabbit Poly	ELISA, IF, IHC, WB
PCDH1	13645-1-AP	Rabbit Poly	ELISA, WB



Antibody Name	Cat. No.	Type	Applications
PCDH10	21859-1-AP	Rabbit Poly	ELISA, IF, WB
PCDH11X	20070-1-AP	Rabbit Poly	ELISA, IF, IHC, WB
PCDH11Y	20069-1-AP	Rabbit Poly	ELISA, WB
PCDH9	25090-1-AP	Rabbit Poly	ELISA, IHC, IP, WB
PCDHA2	10127-2-AP	Rabbit Poly	ELISA, IP, WB
PCDHA3	18803-1-AP	Rabbit Poly	ELISA, IHC, WB
PCDHA5	15270-1-AP	Rabbit Poly	ELISA, IHC, WB
PCDHA6	12853-1-AP	Rabbit Poly	ELISA, WB
PCDHA9	18075-1-AP	Rabbit Poly	ELISA, IHC, IP, WB
PCDHB12	14020-1-AP	Rabbit Poly	ELISA, WB
PCDHB5	15245-1-AP	Rabbit Poly	ELISA, WB
PCDHB5	19609-1-AP	Rabbit Poly	ELISA, WB
PCDHGB3	21204-1-AP	Rabbit Poly	ELISA, IF, WB
PCDHGC3	10857-1-AP	Rabbit Poly	ELISA, IHC
PDGFC	55076-1-AP	Rabbit Poly	ELISA, WB
PDGFD	2 14075-1-AP	Rabbit Poly	ELISA, IHC
PDGFRB	1 13449-1-AP	Rabbit Poly	ELISA, FC, WB
Pentraxin 3	1 13797-1-AP	Rabbit Poly	ELISA, IF, WB
Perforin	1 14580-1-AP	Rabbit Poly	ELISA, WB
PGLYRP3	18082-1-AP	Rabbit Poly	ELISA, WB
PGLYRP4	21134-1-AP	Rabbit Poly	ELISA, IHC
PIGF	1 10642-1-AP	Rabbit Poly	ELISA, IF, IHC, IP, WB
PIN1	3 10495-1-AP	Rabbit Poly	ELISA, IF, IHC, IP, WB
PLA2G12A	2 16009-1-AP	Rabbit Poly	ELISA, IF, IHC, WB
PLA2G1B	15843-1-AP	Rabbit Poly	ELISA, WB
PLUNC	10413-1-AP	Rabbit Poly	ELISA, IHC, IP, WB
PPBP, NAP2	13313-1-AP	Rabbit Poly	ELISA, IHC, WB
Pre-IL18	60070-1-Ig	Mouse Mono	ELISA, IF, WB
Pre-IL18	3 10663-1-AP	Rabbit Poly	ELISA, IF, IHC, IP, WB
PRG2	1 10766-1-AP	Rabbit Poly	ELISA, IHC, WB
P-selectin	1 60322-1-Ig	Mouse Mono	ELISA, IHC, IP, WB


00 This number shows the amount of times our antibody has been cited in a publication.

P-selectin
→ Tie2

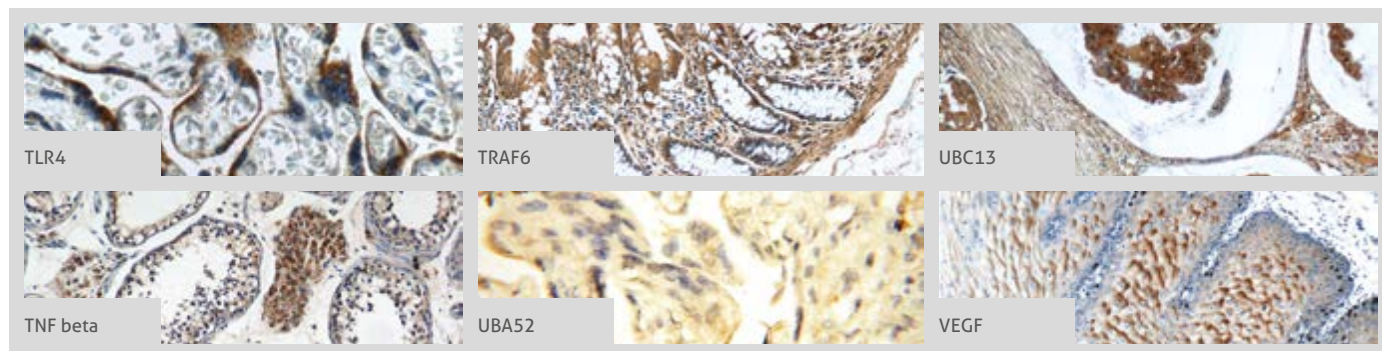
More validation images available on our website. 



Antibody Name	Cat. No.	Type	Applications
P-selectin	13304-1-AP	Rabbit Poly	ELISA, IHC
PTK7	17799-1-AP	Rabbit Poly	ELISA, IHC, IP, WB
PTPRS	2 13008-1-AP	Rabbit Poly	ELISA, FC, IHC, IP, WB
PUM1	26256-1-AP	Rabbit Poly	ELISA, IF, IP
PUM2	11586-1-AP	Rabbit Poly	ELISA, WB
PVRL1	24713-1-AP	Rabbit Poly	ELISA, IF, IHC, WB
PVRL3, Nectin 3	1 11213-1-AP	Rabbit Poly	ELISA, IF, IHC, IP, WB
PVRL4	1 21903-1-AP	Rabbit Poly	ELISA, FC, IF, WB
RANKL	 2 23408-1-AP	Rabbit Poly	ELISA, IHC, IP, WB
R-cadherin	19795-1-AP	Rabbit Poly	ELISA, WB
RELB	1 25027-1-AP	Rabbit Poly	ELISA, IF, IHC, IP, WB
RELT	14532-1-AP	Rabbit Poly	ELISA, WB
RIPK1-Specific	7 17519-1-AP	Rabbit Poly	ELISA, IF, IHC, IP, WB
RIPK2	15366-1-AP	Rabbit Poly	ELISA, WB
RNASE3	55338-1-AP	Rabbit Poly	ELISA, IF, IHC, WB
RNF125	13290-1-AP	Rabbit Poly	ELISA, IHC, WB
RNF135	25061-1-AP	Rabbit Poly	ELISA, IF, IHC, WB
ROBO1	25181-1-AP	Rabbit Poly	ELISA, IHC, WB
ROBO1-Specific	2 20219-1-AP	Rabbit Poly	ELISA, IP, WB
ROMO1	24200-1-AP	Rabbit Poly	ELISA, IHC
RPS27A	1 14946-1-AP	Rabbit Poly	ELISA, IHC, WB
Rubicon	 21444-1-AP	Rabbit Poly	ELISA, IHC, WB
Rubicon	55157-1-AP	Rabbit Poly	ELISA, WB
S100A12	16630-1-AP	Rabbit Poly	ELISA, IHC
S100A8	1 15792-1-AP	Rabbit Poly	ELISA, IHC, WB
S100A9	14226-1-AP	Rabbit Poly	ELISA, IHC, WB
S100A9	26992-1-AP	Rabbit Poly	ELISA, IF, IHC, WB
SAPK4	1 10217-1-AP	Rabbit Poly	ELISA, IHC, WB
SCARA5	55390-1-AP	Rabbit Poly	ELISA, WB
SCGF	55019-1-AP	Rabbit Poly	ELISA, WB
SEMA7A	18070-1-AP	Rabbit Poly	ELISA, WB

Antibody Name	Cat. No.	Type	Applications
SERPING1/ C1 Inactivator	2 12259-1-AP	Rabbit Poly	ELISA, IF, IHC, WB
Serum amyloid P component	66084-1-Ig	Mouse Mono	ELISA, IHC, WB
Serum amyloid P component	20773-1-AP	Rabbit Poly	ELISA, IHC, WB
SFTPA1	11850-1-AP	Rabbit Poly	ELISA, IHC
SIGLEC5	13230-1-AP	Rabbit Poly	ELISA, WB
SIGLEC6	13454-1-AP	Rabbit Poly	ELISA, IHC, WB
SIGLEC7	 13939-1-AP	Rabbit Poly	ELISA, FC, IHC, WB
SIGLEC9	13377-1-AP	Rabbit Poly	ELISA, IHC, WB
SIRP alpha	14482-1-AP	Rabbit Poly	ELISA, WB
SIRP gamma	11857-1-AP	Rabbit Poly	ELISA, WB
SLAMF7	12905-1-AP	Rabbit Poly	ELISA, WB
SOCS1	25852-1-AP	Rabbit Poly	ELISA, IF, IHC, WB
SR-BI	3 21277-1-AP	Rabbit Poly	ELISA, IF, WB
SRC	9 11097-1-AP	Rabbit Poly	ELISA, FC, IF, IHC, IP, WB
STATH	1 19724-1-AP	Rabbit Poly	ELISA, WB
Surfactant protein D	11839-1-AP	Rabbit Poly	ELISA, IHC, IP
TAB1	1 14819-1-AP	Rabbit Poly	ELISA, IP, WB
TAB2	14410-1-AP	Rabbit Poly	ELISA, FC, IF, IHC, IP, WB
TAK1	2 12330-2-AP	Rabbit Poly	ELISA, IHC, WB
TAP1	5 11114-1-AP	Rabbit Poly	ELISA, IF, IHC, IP, WB
TAX1BP1	1 14424-1-AP	Rabbit Poly	ELISA, WB
TGF-alpha	1 22308-1-AP	Rabbit Poly	ELISA, IF, IHC, WB
TGF-beta 1	 36 18978-1-AP	Rabbit Poly	ELISA, IF, IHC, WB
TGF-beta 2-Specific	3 19999-1-AP	Rabbit Poly	ELISA, IF, IHC, WB
TGF-beta 3	3 18942-1-AP	Rabbit Poly	ELISA, IHC, WB
TIA1	5 12133-2-AP	Rabbit Poly	ELISA, IF, IHC, IP, WB
TICAM1	23288-1-AP	Rabbit Poly	ELISA, IHC, WB
TICAM2	19524-1-AP	Rabbit Poly	ELISA, FC, IHC, WB
Tie2	19157-1-AP	Rabbit Poly	ELISA, IP, WB

More validation images available on our website.



Antibody Name	Cat. No.	Type	Applications
TLR1	19816-1-AP	Rabbit Poly	ELISA, IHC
TLR3	17766-1-AP	Rabbit Poly	ELISA, FC, IHC
TLR4	1 66350-1-Ig	Mouse Mono	ELISA, IHC, WB
TLR4	17 19811-1-AP	Rabbit Poly	ELISA, IHC, WB
TLR5	2 19810-1-AP	Rabbit Poly	ELISA, IHC, IP, WB
TLR6	1 22240-1-AP	Rabbit Poly	ELISA, WB
TLR7	1 17232-1-AP	Rabbit Poly	ELISA, IHC, WB
TMEM173/ STING	6 19851-1-AP	Rabbit Poly	ELISA, FC, IF, IHC, IP, WB
TMS1	18 10500-1-AP	Rabbit Poly	ELISA, IHC, IP, WB
TNF alpha	16 60291-1-Ig	Mouse Mono	ELISA, IHC, WB
TNF beta	13111-1-AP	Rabbit Poly	ELISA, IHC, WB
TNFAIP3	3 23456-1-AP	Rabbit Poly	ELISA, WB
TNF-alpha	13 17590-1-AP	Rabbit Poly	ELISA, IHC, WB
TNFR1	60192-1-Ig	Mouse Mono	ELISA, FC, IHC, WB
TNFR1	6 21574-1-AP	Rabbit Poly	ELISA, FC, IF, IHC, WB
TNFR2	4 19272-1-AP	Rabbit Poly	ELISA, FC, IF, IHC, IP, WB
TNFRSF13B	21520-1-AP	Rabbit Poly	ELISA, WB
TNFRSF13C	22582-1-AP	Rabbit Poly	ELISA, FC, IHC
TNFRSF6B	24999-1-AP	Rabbit Poly	ELISA, IP
TNFSF12	12537-1-AP	Rabbit Poly	NULL
TNFSF13	2 10680-1-AP	Rabbit Poly	ELISA, IF, IHC, WB
TNFSF13B	11862-1-AP	Rabbit Poly	ELISA, WB
TNFSF14	14194-1-AP	Rabbit Poly	NULL
TNFSF8	17852-1-AP	Rabbit Poly	ELISA, IHC, WB
TNFSF9	66450-1-Ig	Mouse Mono	ELISA, WB
TRAF3	66310-1-Ig	Mouse Mono	ELISA, IF, WB
TRAF3	1 18099-1-AP	Rabbit Poly	ELISA, FC, IP, WB
TRAF6	5 12809-1-AP	Rabbit Poly	ELISA, IF, IHC, WB
TRAIL	4 17235-1-AP	Rabbit Poly	ELISA, IF, IHC, IP, WB
TRAIIP	10332-1-AP	Rabbit Poly	ELISA, IF, IHC, WB

Antibody Name	Cat. No.	Type	Applications
Transferrin receptor/CD71	7 10084-2-AP	Rabbit Poly	ELISA, IF, IHC, IP, WB
TRIM15	2 13623-1-AP	Rabbit Poly	ELISA, IF, WB
TRIM25	3 12573-1-AP	Rabbit Poly	ELISA, IF, IP, WB
UBA52	1 18039-1-AP	Rabbit Poly	ELISA, IHC, WB
UBC	2 10457-1-AP	Rabbit Poly	ELISA, WB
UBC13	10243-1-AP	Rabbit Poly	ELISA, IHC, IP, WB
UBE1L	15818-1-AP	Rabbit Poly	ELISA, IHC, WB
UBE2D1-Specific	11373-1-AP	Rabbit Poly	ELISA, IHC, WB
UBE2D3	3 11677-1-AP	Rabbit Poly	ELISA, IHC, WB
UBE2K	11834-3-AP	Rabbit Poly	ELISA, IHC, WB
UBE2L6	17278-1-AP	Rabbit Poly	ELISA, IF, IP, WB
UBE2V1	10207-2-AP	Rabbit Poly	ELISA, WB
ubiquitin	17 10201-2-AP	Rabbit Poly	ELISA, IF, IHC, IP, WB
VCAM-1	66294-1-Ig	Mouse Mono	ELISA, IHC, WB
VCAM-1	11 11444-1-AP	Rabbit Poly	ELISA, FC, IF, IHC, WB
VEGF	62 19003-1-AP	Rabbit Poly	ELISA, IF, IHC, IP, WB
VEGF Receptor 2	1 26415-1-AP	Rabbit Poly	ELISA, FC, IHC, WB
VEGFC	1 22601-1-AP	Rabbit Poly	ELISA, IF, IHC, WB
VEGFD	26915-1-AP	Rabbit Poly	ELISA, IHC, WB
VEGFR-1/FLT-1	3 13687-1-AP	Rabbit Poly	ELISA, FC, IF, IP, WB
VEGFR3	2 20712-1-AP	Rabbit Poly	ELISA, WB
Vitronectin	2 15833-1-AP	Rabbit Poly	ELISA, IF, IHC, WB
VTN	66398-1-Ig	Mouse Mono	ELISA, IHC, WB
WFDC12	25101-1-AP	Rabbit Poly	ELISA, WB
ZC3HAV1	66413-1-Ig	Mouse Mono	ELISA, IF, IHC, WB
ZC3HAV1	4 16820-1-AP	Rabbit Poly	ELISA, IF, IHC, IP, WB

00 This number shows the amount of times our antibody has been cited in a publication.

CONTACT US

Proteintech Group *US Head Office*

PHONE 1 (888) 4PTGLAB
(1-888-478-4522)
(toll free in USA),
or 1(312) 455-8498
(outside USA)

FAX 1 (312) 455-8408

ADDRESS Proteintech Group, Inc.
5400 Pearl Street, Suite 300,
Rosemont, IL 60018, USA

EMAIL proteintech@ptglab.com

Proteintech Europe *United Kingdom*

PHONE +44 (161) 8393007

FAX +44 (161) 2413103

ADDRESS Proteintech Europe, Ltd.
4th Floor,
196 Deansgate,
Manchester, M3 3WF

EMAIL europe@ptglab.com

Proteintech Europe *Germany*

EMAIL germany@ptglab.com
Sales and technical support only.

Proteintech *China Office*

PHONE 027-87531629
or 4006-900-926

FAX 027-87531627

ADDRESS Wuhan Sanying Biotechnologies
D3-3, No.666 Gaoxin Avenue,
Wuhan East Lake Hi-tech Development Zone
Wuhan, Hubei, P.R.C

EMAIL Proteintech-CN@ptglab.com

Support

Available 24 hours via Live Chat and 9-5 (CDT) via phone.

Email support also available.

LIVE CHAT
www.ptglab.com

TWITTER
[@proteintech](https://twitter.com/proteintech)

BLOG
www.ptglab.com/news/blog

YOUTUBE
www.youtube.com/Proteintech



We are ISO 9001 and
ISO 13485 accredited.

