



Uni-rAb™

重组兔单克隆抗体



www.ptgcn.com

Uni-rAb™ 重组单克隆抗体

Uni-rAb™ 重组单抗源自 Proteintech Uni-rAb™ 单个 B 细胞抗体发现技术平台。该系列抗体继承了兔来源抗体的高特异性和高灵敏度，同时也避免了传统杂交瘤细胞系表达退化的风险，具有高批次稳定性和高重复性。

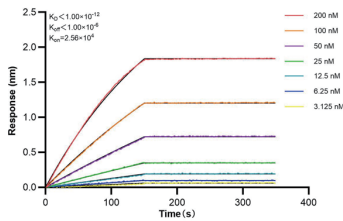
- 好抗体来自好抗原** 20+ 年抗原设计经验结合创新工艺
- 高亲和力** Uni-rAb™ 重组单抗解离常数 $K_D=10^{-12} \sim 10^{-10}$
- 高特异性** 通过多维度内源性免疫学实验及 siRNA/CRISPR 验证
- 超低背景** “1+1” 精纯工艺，清除杂质干扰，确保抗体高纯度
- 高批间一致性** 重组技术突破批间差限制，实现长期稳定供应
- 上新速度快** 高通量平台，持续每天上新



亲和力参数-标配测定

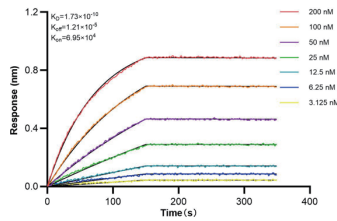
MMP13 Recombinant antibody

货号: 83188-2-RR
 $K_D < 1.0 \times 10^{-12}$



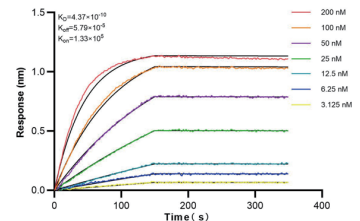
NEDD9 Recombinant antibody

货号: 83362-2-RR
 $K_D=1.73 \times 10^{-10}$



PFDN1 Recombinant antibody

货号: 83433-1-RR
 $K_D=4.37 \times 10^{-10}$

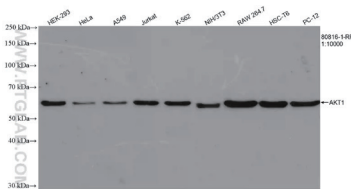


内源性免疫学实验验证

免疫印迹 (多样本)

AKT1 Recombinant antibody

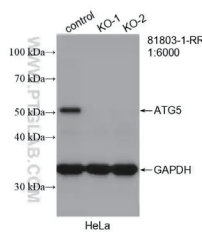
货号: 80816-1-RR
 WB 稀释比: 1:10000



免疫印迹 (KO 验证)

ATG5 Recombinant antibody

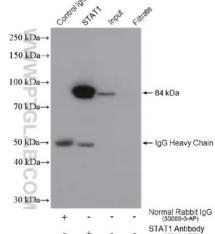
货号: 81803-1-RR
 WB 稀释比: 1:6000



免疫沉淀

STAT1 Recombinant antibody

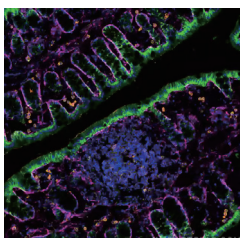
货号: 82016-1-RR
 IP: 4ug; Detection: 1:10000



免疫荧光

CD45 Recombinant antibody

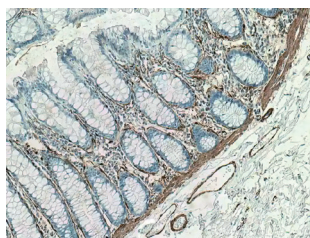
货号: 80297-1-RR (橙色)



免疫组化

a SMA specific Recombinant antibody

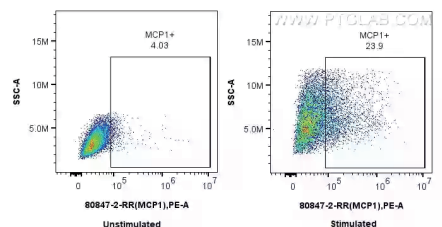
货号: 80008-1-RR
 IHC 稀释比: 1: 3000



流式细胞实验

MCP-1 Recombinant antibody

货号: 80847-2-RR



Uni-rAb™ 单个 B 细胞抗体发现技术平台

Proteintech 采用单个 B 细胞克隆技术和重组抗体生产工艺，建立了高效的重组抗体发现和和生产平台—Uni-rAb™ 单个 B 细胞抗体发现技术平台。该平台利用创新型抗原设计、动物免疫、流式分选、单细胞 RT-PCR、高通量抗体表达以及生物信息学分析，可直接从抗原特异性 B 细胞或浆细胞中获得天然配对的 VH&VL 基因工程单克隆抗体。

丰富的抗原设计经验及优化策略

"1+1" 精纯工艺*2，清除杂质干扰，超低背景

抗原双标结合生物膜干涉技术筛选高亲和力

综合性抗体开发平台，多元化抗体类型*3

三重筛选*1，内源性实验验证

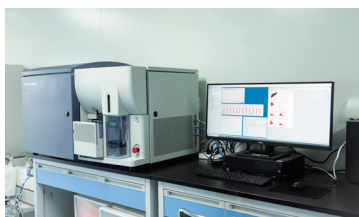
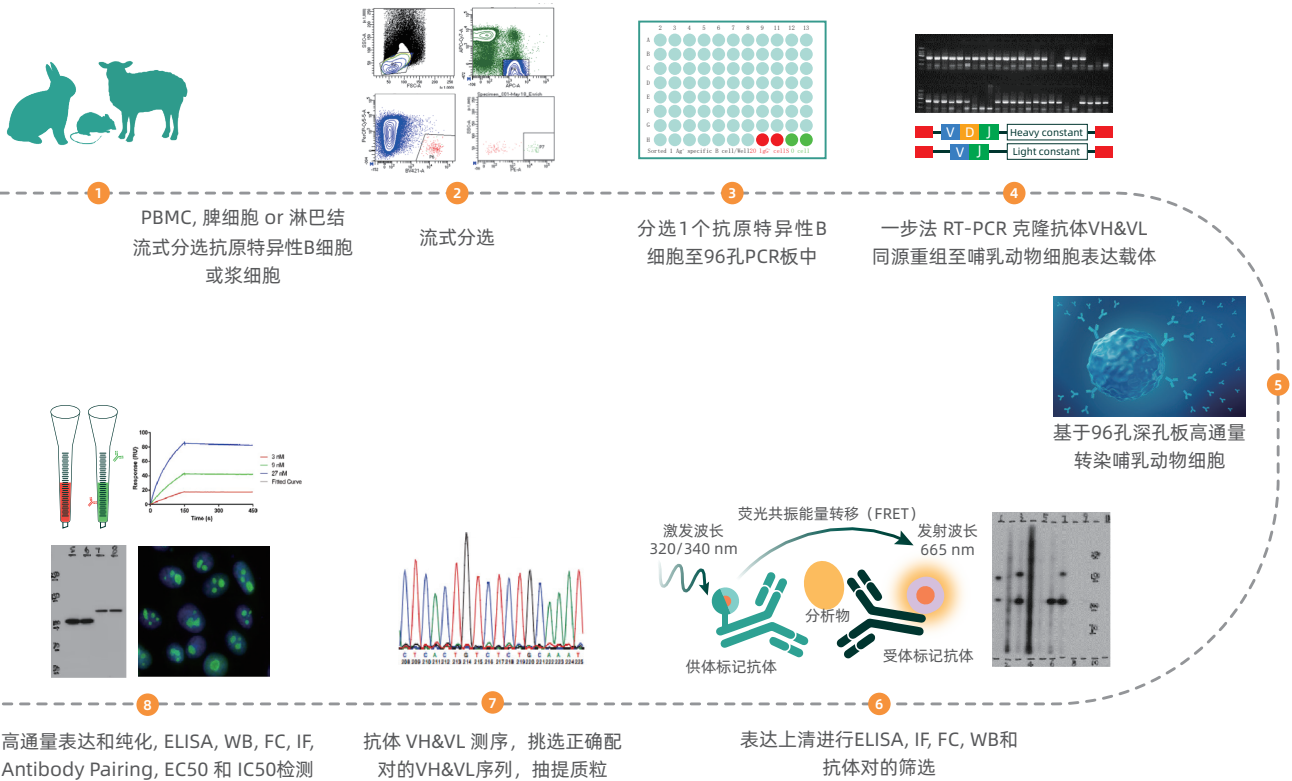
高通量速度，抗体上新更快

Uni-rAb™ 技术平台优势

*1. 高通量表达上清初筛、高通量纯化抗体二次筛查、抗体上线前检测。

*2. Protein A 和混合模式阳或阴离子交换介质两步精纯工艺，确保抗体高纯度。

*3. 可开发全长抗体、融合抗体、嵌合抗体和双特异性抗体，Fab、scFv、sdAb 等抗体片段。



流式细胞分选仪进行单细胞分选



非标记生物分子分析仪
进行抗体亲和力测定及筛选



层析系统进行抗体精纯

精选 Uni-rAb™ 重组兔单抗产品

靶点名称	货号	应用	适用物种
癌症 (Cancer)			
ACTA1-Specific	82714-5-RR	WB, ELISA	Mouse, Rat, Pig, Chicken
BCL2	80313-1-RR	WB, IHC, ELISA	Human
Phospho-BCL2 (Ser70)	80771-2-RR	WB, ELISA	Human
c-Met (Cytoplasmic)	82904-1-RR	WB, ELISA	Human, Mouse, Rat
iNOS	80517-1-RR	WB, IHC, ELISA	Human, Mouse, Rat
MMP1	83114-2-RR	WB, IF, FC, ELISA	Human
MMP13	83188-2-RR	IF, ELISA	Human
MMP13	83188-4-RR	WB, ELISA	Human
MMP2	81515-2-RR	IF, FC, ELISA	Human
P53	80077-1-RR	WB, IF, FC, ELISA	Human, Mouse, Rat, Zebrafish
Phospho-P53 (Ser15)	80195-1-RR	WB, IF, FC, ELISA	Human
Phospho-STK11/LKB1 (Thr189)	80127-1-RR	WB, IF, FC, ELISA	Human, Mouse
Smooth muscle actin specific	80008-1-RR	WB, IF, FC, IHC, ELISA	Human, Mouse, Rat, Chicken, Pig, Zebrafish
TGFB1	81746-2-RR	WB, ELISA	Human, Mouse
VEGFA	81323-2-RR	WB, ELISA	Human, Mouse
WT1	82525-1-RR	WB, IHC, ELISA	Human
ZO-1	82870-1-RR	WB, IP, IF, ELISA	Human
免疫学 (Immunology)			
CCR5	82942-1-RR	WB, ELISA	Human, Mouse
CD14	83055-6-RR	WB, ELISA	Mouse
CD22	83303-1-RR	WB, ELISA	Human
CD28	83383-6-RR	IF, ELISA	Human
CD9	82105-1-RR	WB, IF, IHC, ELISA	Human
Phospho-Hamartin/TSC1 (Ser511)	80340-1-RR	WB, FC, ELISA	Human, Mouse
ICAM-1	83069-6-RR	WB, IF, ELISA	Human
IL-1 Beta	82696-6-RR	WB, ELISA	Human
IL-6	81077-1-RR	WB, ELISA	Human
IL-18	82907-1-RR	WB, IF, ELISA	Human
IRF3	80519-1-RR	WB, IF, IHC, ELISA	Human, Mouse, Zebrafish
LBP	83427-1-RR	WB, ELISA	Human
MCP-1	80847-2-RR	FC, ELISA	Mouse
MPO	81610-1-RR	WB, IF, IHC, ELISA	Human
NF-κB p65	80979-1-RR	WB, IF, FC, ELISA	Human, Mouse, Rat
Phospho-NF-κB p65 (Ser468)	82335-1-RR	WB, ELISA	Human, Mouse
NGAL	82841-1-RR	WB, ELISA	Human
TLR3	83136-3-RR	WB, ELISA	Human
TMEM173/STING	80165-1-RR	WB, IP, IF, IHC, ELISA	Human, Mouse, Rat
uPAR, PLAUR	82953-2-RR	WB, ELISA	Human
uPAR, PLAUR	82953-1-RR	FC, IHC, ELISA	Human, Mouse
心血管 (Cardiovascular)			
CTGF	82976-1-RR	WB, ELISA	Human
FASN	81079-1-RR	WB, IF, ELISA	Human, Mouse, Rat
HIF-1 alpha	80933-1-RR	WB, IF, IHC, ELISA	Human
LDLR	82724-1-RR	WB, IHC, ELISA	Human, Mouse, Rat
MMP3	82984-4-RR	WB, ELISA	Human
PDGFB	83214-5-RR	WB, ELISA	Human, Mouse, Rat
PGF	83170-4-RR	FC, ELISA	Human
SFTPB	82866-16-RR	WB, ELISA	Human, Mouse
SFTPB	82866-5-RR	FC, ELISA	Human
神经生物学 (Neuroscience)			
CLOCK	82829-1-RR	WB, IHC, ELISA	Human, Mouse, Rat
FTO	81471-1-RR	WB, IF, IHC, ELISA	Human
GDNF	83087-2-RR	WB, ELISA	Human, Mouse
GDNF	83087-1-RR	FC, ELISA	Human
GFAP	81063-1-RR	WB, IF, IHC, ELISA	Human, Mouse, Rat, Pig
GSK3B	82061-1-RR	WB, IP, IHC, ELISA	Human, Mouse, Rat
IBA1	81728-1-RR	WB, IF, FC, IHC, ELISA	Human, Mouse, Rat
NRG1, isoform Alpha	83251-2-RR	IF, FC, ELISA	Human
Phospho-TAU (Ser202/Thr205)	82568-1-RR	WB, ELISA	Human, Mouse
Phospho-TAU (Ser404)	81383-1-RR	WB, ELISA	Human, Mouse
TDP43	80002-1-RR	FC, IF/ICC, IP, IHC, WB, ELISA	Human, Mouse, Rat
Phospho-TDP43 (Ser409/410)	80007-1-RR	FC, IHC, IF, WB, ELISA	Human, Mouse

靶点名称	货号	应用	适用物种
细胞生物学 (Cell Biology)			
ACE2	80063-1-RR	IF, IHC, ELISA	Human
AURKA	82906-2-RR	WB, IF, ELISA	Human
CHOP; GADD153	81462-1-RR	WB, ELISA	Human
Cyclin D1	82681-1-RR	WB, IHC, ELISA	Human, Mouse, Rat
GRP78,BIP	80849-1-RR	WB, IHC, ELISA	Human
HO-1	81281-1-RR	WB, IP, ELISA	Human, Rat
MTCO2	83132-7-RR	WB, IP, IF, FC, ELISA	Human
NCL	83380-1-RR	WB, IF, FC, ELISA	Human
Phospho-TSC2 (Ser939)	81654-1-RR	WB, ELISA	Human
Phospho-TSC2 (Thr1462)	80698-1-RR	WB, ELISA	Human
PLK1	83260-5-RR	WB, IF, ELISA	Human
细胞死亡 (Cell Death)			
ACSL4/FACLA	81196-1-RR	WB, IP, IHC, ELISA	Human, Mouse, Rat
AIFM2/ FSP1	82974-1-RR	WB, ELISA	Human
ATG5	81803-1-RR	WB, IP, IHC, ELISA	Human, Mouse , Rat
Bcl-XL	83330-1-RR	WB, IF, FC, ELISA	Human, Mouse, Rat
Caspase 3	82202-1-RR	WB, IF, FC, IHC, ELISA	Human, Mouse
Cleaved Caspase 3	82707-13-RR	WB, IF, ELISA	Human
Phospho-Caspase 9 (Ser196)	80346-1-RR	WB, ELISA	Human, Mouse
cGAS	82869-1-RR	WB, ELISA	Human
Cytochrome c	83276-1-RR	WB, FC, ELISA	Human, Mouse
GCSH	83012-5-RR	WB, ELISA	Human
GPX4	82949-1-RR	IF, FC, ELISA	Human
GPX4 (Human Specific)	82822-2-RR	WB, ELISA	Human
LC3	81004-1-RR	WB, IF, IHC, ELISA	Human, Mouse, Rat, Pig
NRF2, NFE2L2	80593-1-RR	WB, IP, IF, FC, IHC, ELISA	Human, Mouse
P62,SQSTM1	80294-1-RR	WB, IP, IF, FC, IHC, ELISA	Human
PARP1	80174-1-RR	WB, IF, IHC, ELISA	Human, Mouse, Rat
Transferrin	81676-1-RR	WB, IHC, ELISA	Human, Mouse , Rat
信号通路 (Signal Transduction)			
AKT1	80816-1-RR	WB, IP, FC, IHC, ELISA	Human, Mouse, Rat
Phospho-AKT1 (Ser473)	80462-1-RR	WB, FC, ELISA	Human, Mouse
CAMP	82940-1-RR	WB, ELISA	Human, Mouse
Phospho-CREB1 (Ser133)	81871-1-RR	WB, IHC, ELISA	Human
EMD	82888-3-RR	WB, FC, ELISA	Human
EMD	82888-2-RR	IF, FC, IHC, ELISA	Human
Phospho-ERK1/2 (Thr202/Tyr204)	80031-1-RR	WB, ELISA	Human
GH1	82813-2-RR	WB, IHC, ELISA	Human
Phospho-HSP27 (Ser15)	83332-3-RR	WB, IF, ELISA	Human
mTOR	81670-1-RR	WB, IP, IF, FC, IHC, ELISA	Human, Mouse, Rat
Phospho-mTOR (Ser2448)	80596-1-RR	WB, IF, ELISA	Human, Rat
MYB/c-Myb	82804-2-RR	WB, ELISA	Human
p38 MAPK	80821-2-RR	WB, IF, FC, ELISA	Human, Mouse, Rat
PHGDH	81986-1-RR	WB, IP, IHC, ELISA	Human, Mouse, Rat
Phospho-PDH E1 Alpha (Ser232)	81491-1-RR	WB, ELISA	Human, Mouse, Rat
Phospho-PDH E1 Alpha (Ser300)	80572-1-RR	WB, IF, ELISA	Human, Mouse, Rat
RAN	82978-1-RR	WB, IF, FC, ELISA	Human, Mouse, Rat
SHBG	83096-1-RR	WB, FC, ELISA	Human
Phospho-SMAD1 (Ser195)	80257-1-RR	WB, ELISA	Human
Phospho-SMAD1 (Ser214)	81433-1-RR	WB, ELISA	Human, Mouse
SMAD4	83169-5-RR	WB, IF, FC, ELISA	Human, Mouse
STAR	80751-1-RR	WB, IF, IHC, ELISA	Human, Rat, Pig, Mouse
STAT1	82016-1-RR	WB, IP, IF, IHC, ELISA	Human, Mouse, Rat
Phospho-STAT1 (Tyr701)	82674-10-RR	WB, ELISA	Human
STAT3	80149-1-RR	WB, ELISA	Human, Mouse
STAT6	82630-1-RR	WB, IHC, ELISA	Human, Mouse, Rat
Thioredoxin	82765-1-RR	WB, ELISA	Human
Phospho-ULK1 (Ser556)	80218-1-RR	WB, FC, ELISA	Human, Mouse
YAP1	81090-1-RR	WB, IF, IHC, ELISA	Human, Mouse, Rat
表观遗传学 (Epigenetics)			
AHR	83369-5-RR	WB, ELISA	Human
ATF4	81798-2-RR	IF, ELISA	Human
ATF4	81798-1-RR	WB, IP, IHC, ELISA	Human
c-MYC	80845-1-RR	WB, ELISA	Human
Phospho-CHEK2 (Thr68)	81740-1-RR	WB, ELISA	Human
Phospho-Histone H2A.X (Ser139)	83307-2-RR	WB, ELISA	Human
HMGB1	82973-1-RR	WB, IF, IHC, ELISA	Human, Mouse, Rat
KEAP1	80744-1-RR	WB, IF, IHC, ELISA	Human, Mouse , Rat
MAX	82958-1-RR	WB, ELISA	Human
MSH2	82775-1-RR	WB, ELISA	Human
Phospho-JUN (Ser73)	80086-1-RR	WB, ELISA	Human, Mouse
PPAR Gamma	81490-5-RR	WB, FC, IHC, ELISA	Human, Rat
RUNX2	82636-2-RR	WB, IP, ELISA	Human, Mouse



扫码查看更多 Uni-rAb™ 重组兔单抗产品

Proteintech 一站式免疫学及细胞实验解决方案

Proteintech 于 2001 年成立于美国芝加哥，致力于【抗体组计划】，已研发生产近 2 万种抗体，400 余种双抗夹心法 ELISA 试剂盒，Humankine® 系列人源细胞表达的活性蛋白、Chromotek® 系列纳米抗体创新试剂等，产品覆盖生命科学各个领域，积极助力科学发展及医药开发。



抗体 · Antibodies

- 兔多抗 / 鼠单抗
- **重组兔单抗** / 羊驼纳米抗体
- 流式抗体 / 直标抗体 / 抗体对
- 重组二抗 / 抗体组合套装
- 免疫磁珠细胞分选系列产品
- 单细胞空间组学分析抗体



ELISA 试剂盒 · ELISA kits

- AuthentiKine® 精品系列
- Human/Mouse/Rat 系列
- 抗体对套装



蛋白 · Proteins

- Humankine® 天然活性蛋白
- 哺乳动物表达真核重组蛋白
- 原核表达重组蛋白
- 表观遗传药物开发重组蛋白



实验室常用试剂 · Reagents

- 全套免疫学实验相关试剂
- 细胞培养 / 检测 / 冻存试剂
- 小分子化合物 / 化合物库

Proteintech——抗体应用专家

超过**25万次**SCI文献引用

1000余次顶尖期刊封面文章引用



2022 年 Proteintech 荣获
“研究者之选”奖



2019 年 Proteintech 荣获
“免疫学 - 明日之星”奖



2016 年 Proteintech 荣获
“最佳抗体验证开拓”奖



2014 年 Proteintech 荣获
ISO9001 及 ISO13485 认证

Proteintech 旗下品牌



抗体 · ELISA 试剂盒 · 蛋白质



人源细胞表达高活性蛋白



纳米抗体相关产品



单细胞和空间多组学分析检测



表观遗传学专家(独家代理)

