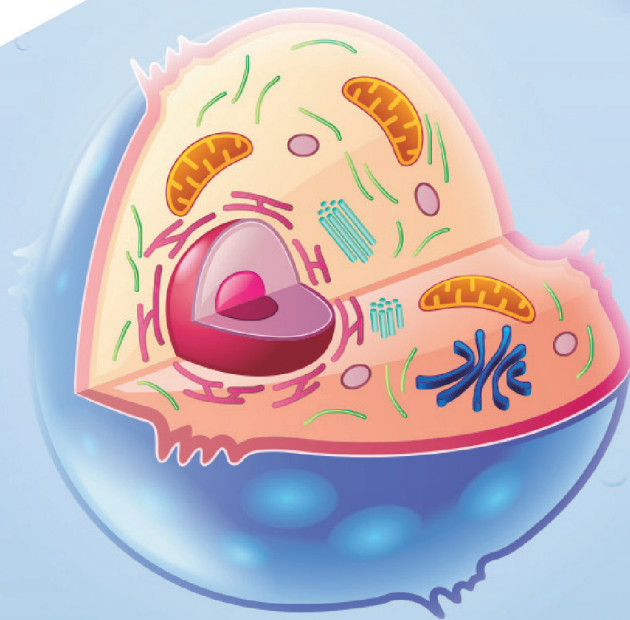


细胞器和亚细胞 标志物抗体



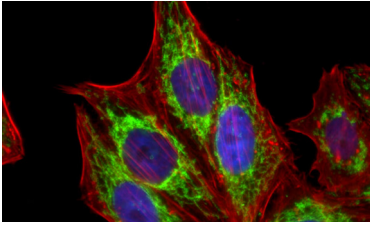
Proteintech 提供齐全的细胞器和亚细胞标志物抗体

细胞器和亚细胞标志物抗体是细胞生物学中常用的研究工具。通过免疫荧光检测可观察细胞器的形态结构，确定蛋白定位并探究其功能。此外，有些细胞器和亚细胞标志物在细胞器分离的 western blot 研究中也常常用作阳性对照。

Proteintech 还可提供 HRP、Biotin 以及 CoraLite® 系列等荧光染料标记的细胞器和亚细胞标志物抗体，满足多种实验需求。

线粒体

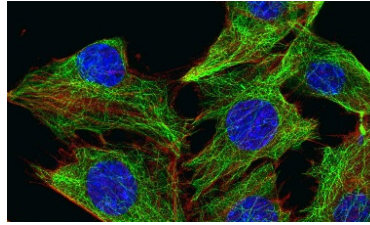
TOM20重组兔单抗 (绿色)
货号: 80501-1-RR



样本: HepG2 cells

细胞骨架

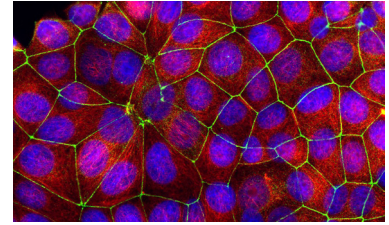
Alpha Tubulin重组兔单抗 (绿色)
货号: 80762-1-RR



样本: C2C12 cells

细胞连接

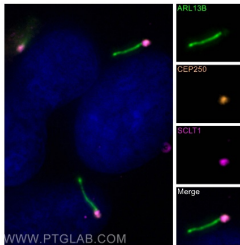
ZO-1小鼠单抗 (绿色)
货号: 66452-1-Ig



样本: MCF-7 cells

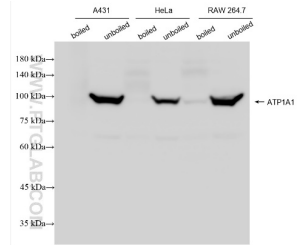
纤毛

ARL13B荧光直标兔多抗 (绿色)
货号: CL488-17711



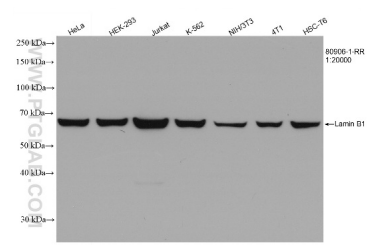
细胞膜

ATP1A1重组兔单抗
货号: 83191-6-RR 稀释比1:10000



细胞核膜

Lamin B1重组兔单抗
货号: 80906-1-RR 稀释比1:20000



PTG·深耕25年 专注抗体·免疫

Proteintech 以【抗体组计划】为愿景,完成覆盖生命科学领域的抗体。目前可提供 30000 余种现货高品质抗体,所有抗体产品均经过内源性实验验证特异性,有效确保实验的高效及数据的准确。

抗体类型齐全

- 重组兔单抗 / 重组流式抗体 / 抗体对
- 兔多抗 / 小鼠单抗 / 羊驼纳米抗体
- 直标抗体 / 中和抗体 / 抗体组合
- 重组二抗 / 病理诊断抗体 / 单细胞组学抗体

抗体存储液形式多样

- 含 PBS 及叠氮化钠系列
- 仅含 PBS 系列

抗体验证手段完善

- WB/IHC/IF/FC/IP/ELISA 等验证
- siRNA 验证 / CRISPR-Cas9 验证
- 改变靶蛋白修饰形式验证
- 多样本 / 阴性或阳性样本验证

旗下品牌



独家代理

| 细胞膜 | | | | | |
|-----------------|------------|-------|--|---|--------|
| 抗体靶点 | 货号 | 抗体类型 | 适用应用 | 适用物种 | SCI 文献 |
| ATP1A1 | 83191-6-RR | 重组兔单抗 | WB, IF/ICC, FC (Intra), ELISA | human,mouse | 1 |
| | 68735-2-Ig | 小鼠单抗 | WB, IHC, ELISA | human | - |
| | 14418-1-AP | 兔多抗 | WB, IHC, IF/ICC, FC (Intra), IP, CoIP, ELISA | human,mouse,pig,rat,chicken | 251 |
| ATP1A1-Specific | 55187-1-AP | 兔多抗 | WB, IHC, IF/ICC, FC (Intra), ELISA | human,mouse,rat | 21 |
| | 84387-6-RR | 重组兔单抗 | WB, IF/ICC, ELISA | human | - |
| CD98/SLC3A2 | 66883-1-Ig | 小鼠单抗 | WB, IHC, IF/ICC, ELISA | human | 8 |
| | 15193-1-AP | 兔多抗 | WB, IHC, IF/ICC, IP, ELISA | human,mouse,rat,bovine,sheep | 58 |
| | 83991-4-RR | 重组兔单抗 | WB, IHC, IF/ICC, ELISA | human | - |
| E-cadherin | 60335-1-Ig | 小鼠单抗 | WB, IHC, IF/ICC, IF-P, IF-Fro, ELISA | human,monkey,mouse,pig,rat | 220 |
| | 20874-1-AP | 兔多抗 | WB, IHC, IF/ICC, IF-P, IF-Fro, IP, CoIP, ELISA | human,mouse,pig,rat,bovine,canine,zebrafish | 2368 |
| | 86776-1-RR | 重组兔单抗 | WB, ELISA | human,mouse | - |
| P-cadherin | 66295-1-Ig | 小鼠单抗 | WB, IHC, ELISA | human,mouse | 1 |
| | 13773-1-AP | 兔多抗 | WB, IHC, IF/ICC, IP, ELISA | human,mouse,rat | 15 |
| | 31313-1-AP | 兔多抗 | WB, IHC, IF/ICC, ELISA | human,mouse,rat | 1 |

| 细胞连接 | | | | | |
|-----------------------|------------|-------|---|---|--------|
| 抗体靶点 | 货号 | 抗体类型 | 适用应用 | 适用物种 | SCI 文献 |
| Beta Catenin | 80488-1-RR | 重组兔单抗 | WB, IHC, IF/ICC, CoIP, ELISA | human,mouse,pig,rat,zebrafish | 2 |
| | 66379-1-Ig | 小鼠单抗 | WB, IHC, IF/ICC, IF-P, FC (Intra), IP, CoIP, ELISA | human,mouse,pig,rat,sheep | 111 |
| | 51067-2-AP | 兔多抗 | WB, IHC, IF/ICC, IF-P, FC (Intra), IP, CoIP, ChIP, ELISA | human,mouse,pig,rat,sheep,canine,chicken,goat,hamster,zebrafish | 950 |
| Connexin 43 | 80543-1-RR | 重组兔单抗 | WB, IHC, IF/ICC, IF-P, ELISA | human,mouse,pig,rat | - |
| | 26980-1-AP | 兔多抗 | WB, IHC, IF-P, IP, CoIP, ELISA | human,mouse,pig,rat | 77 |
| | 83991-4-RR | 重组兔单抗 | WB, IHC, IF/ICC, ELISA | human | - |
| E-cadherin | 60335-1-Ig | 小鼠单抗 | WB, IHC, IF/ICC, IF-P, IF-Fro, ELISA | human,monkey,mouse,pig,rat | 220 |
| | 20874-1-AP | 兔多抗 | WB, IHC, IF/ICC, IF-P, IF-Fro, IP, CoIP, ELISA | human,mouse,pig,rat,bovine,canine,zebrafish | 2368 |
| | 82968-1-RR | 重组兔单抗 | WB, IHC, IF/ICC, ELISA | human | - |
| N-cadherin | 66219-1-Ig | 小鼠单抗 | WB, IHC, IF-P, ELISA | human,monkey,mouse,pig,rabbit,rat | 207 |
| | 22018-1-AP | 兔多抗 | WB, IHC, IF/ICC, IF-P, IF-Fro, IP, CoIP, ELISA | human,mouse,rat,bovine,canine,gecko,hamster,horse | 1410 |
| | 80545-1-RR | 重组兔单抗 | WB, IF/ICC, IP, ELISA | human,mouse,pig | - |
| Occludin | 66378-1-Ig | 小鼠单抗 | WB, IHC, ELISA | human,mouse,pig,rat,bovine,sheep | 138 |
| | 27260-1-AP | 兔多抗 | WB, IHC, IF/ICC, IF-Fro, IP, ELISA | human,mouse,pig,rabbit,rat,bovine,canine,chicken,duck,goat | 685 |
| | 86776-1-RR | 重组兔单抗 | WB, ELISA | human,mouse | - |
| P-cadherin | 66295-1-Ig | 小鼠单抗 | WB, IHC, ELISA | human,mouse | 1 |
| | 13773-1-AP | 兔多抗 | WB, IHC, IF/ICC, IP, ELISA | human,mouse,rat | 15 |
| | 83766-6-RR | 重组兔单抗 | WB, IF/ICC, IF-P, ELISA | human | 1 |
| VE-cadherin/ CD144 | 66804-1-Ig | 小鼠单抗 | WB, IHC, IF-P, ELISA | human | 41 |
| | 27956-1-AP | 兔多抗 | WB, IHC, IF/ICC, FC, ELISA | human | 28 |
| | RMX00002 | 重组兔多抗 | WB, IHC, IF/ICC, IP, ELISA | human,mouse,rat | - |
| ZO-1 | 82870-7-RR | 重组兔单抗 | WB, IHC, IF/ICC, IF-P, FC (Intra), IP, ELISA | human,mouse,canine | - |
| | 66452-1-Ig | 小鼠单抗 | WB, IHC, IF/ICC, IF-P, ELISA | human,pig,canine | 83 |
| | 21773-1-AP | 兔多抗 | WB, IHC, IF/ICC, IF-Fro, FC (Intra), IP, CoIP, RIP, ELISA | human,mouse,pig,rabbit,rat,bovine,canine,chicken,goat,hamster | 1535 |

| 细胞骨架 | | | | | |
|----------------|------------|-------|---|---|--------|
| 抗体靶点 | 货号 | 抗体类型 | 适用应用 | 适用物种 | SCI 文献 |
| Alpha Tubulin | 80762-1-RR | 重组兔单抗 | WB, IHC, IF/ICC, IF-P, IF-Fro, ELISA | human,mouse,rat | 10 |
| | 66031-1-Ig | 小鼠单抗 | WB, IHC, IF/ICC, FC (Intra), IP, CoIP, ELISA | human,monkey,mouse,rabbit,rat,sheep,canine,chicken,goat,tick,zebrafish | 1272 |
| | 11224-1-AP | 兔多抗 | WB, IHC, IF/ICC, IF-Fro, FC (Intra), IP, CoIP, ELISA | human,monkey,mouse,rabbit,rat,chicken,goat,hamster,p. lividus,zebrafish | 1746 |
| Beta Actin | 81115-1-RR | 重组兔单抗 | WB, IHC, IF/ICC, IP, ELISA | human,monkey,mouse,pig,rat,bovine,chicken,goat | 778 |
| | 66009-1-Ig | 小鼠单抗 | WB, IHC, IF/ICC, IF-P, FC (Intra), IP, CoIP, ChIP, ELISA, Cell Culture | human,mouse,rat,pig,rabbit,canine,monkey,chicken,zebrafish,hamster,bovine,dog,drosophila,cyprinus carpio,cat,a.fumigatus strains,aedes albopictus,arabidopsis | 7840 |
| | 20536-1-AP | 兔多抗 | WB, IHC, IF/ICC, IP, CoIP, ELISA | human,monkey,mouse,ochotona curzoniae,rat,sheep,camelus bactrianus,canine,carp,chicken,goat,yeast | 4549 |
| Beta Tubulin | 80713-1-RR | 重组兔单抗 | WB, IHC, IF/ICC, IF-P, FC (Intra), IP, ELISA | human,mouse,rat,zebrafish | 11 |
| | 66240-1-Ig | 小鼠单抗 | WB, IHC, IF/ICC, IF-P, IF-Fro, IP, ELISA | human,monkey,mouse,nematode,pig,rabbit,rat,sheep,canine,chicken,zebrafish | 474 |
| | 10094-1-AP | 兔多抗 | WB, IHC, IF/ICC, IF-P, FC (Intra), IP, CoIP, ELISA | human,mouse,rabbit,rat,chicken,fish,goat,hamster,sheep,zebrafish | 1366 |
| Cytokeratin 18 | 82817-5-RR | 重组兔单抗 | WB, IHC, IF/ICC, ELISA | human,mouse,rat | - |
| | 66187-1-Ig | 小鼠单抗 | WB, IHC, IF/ICC, IF-P, FC (Intra), ELISA | human,mouse,pig,rat | 21 |
| | 10830-1-AP | 兔多抗 | WB, IHC, IF/ICC, FC (Intra), IP, ELISA | human,monkey,mouse,pig,rat,bovine,duck,goat,sheep | 124 |
| Cytokeratin 19 | 86250-1-RR | 重组兔单抗 | WB, ELISA | human | - |
| | 60187-1-Ig | 小鼠单抗 | WB, IHC, IF-P, IF-Fro, FC (Intra), ELISA | human,mouse,pig,rat | 14 |
| | 10712-1-AP | 兔多抗 | WB, IHC, IF/ICC, IF-P, FC (Intra), ELISA | human,mouse,pig,rat,canine,dog,goat | 155 |
| Desmin | 82748-1-RR | 重组兔单抗 | WB, IHC, IF-P, ELISA | human,mouse,pig,rat | - |
| | 67793-1-Ig | 小鼠单抗 | WB, IHC, IF-P, ELISA | human,mouse,pig,rat | 9 |
| | 16520-1-AP | 兔多抗 | WB, IHC, IF/ICC, IF-P, IP, ELISA | human,monkey,mouse,rat,sheep,chicken | 86 |
| Pan-Keratin | 26411-1-AP | 兔多抗 | WB, IHC, IF/ICC, IF-P, ELISA | human,mouse,rat,sheep | 46 |
| | 80232-1-RR | 重组兔单抗 | WB, IHC, IF/ICC, IF-Fro, ELISA | human,mouse,rat | 3 |
| | 60330-1-Ig | 小鼠单抗 | WB, IHC, IF/ICC, IP, CoIP, ELISA | human,mouse,pig,rabbit,rat,zebrafish | 315 |
| Vimentin | 10366-1-AP | 兔多抗 | WB, IHC, IF/ICC, IF-P, IF-Fro, FC (Intra), IP, CoIP, RIP, ELISA, Cell treatment | human,mouse,pig,rat,sheep,bovine,deer,goat,hamster | 1897 |

| 细胞核 | | | | | |
|----------------|------------|-------|---|---|--------|
| 抗体靶点 | 货号 | 抗体类型 | 适用应用 | 适用物种 | SCI 文献 |
| HDAC2 | 67165-1-Ig | 小鼠单抗 | WB, IHC, IF/ICC, FC (Intra), IP, CoIP, ELISA | human,mouse,rat | 3 |
| | 12922-3-AP | 兔多抗 | WB, IHC, IF/ICC, FC (Intra), IP, CoIP, ChIP, ELISA | human,mouse,rat | 92 |
| HDAC2-specific | 16152-1-AP | 兔多抗 | WB, IHC, IF/ICC, IP, ELISA | human | 4 |
| | 83307-3-RR | 重组兔单抗 | WB, IHC, ELISA | human,mouse,rat | - |
| Histone H2A.X | 68888-1-Ig | 小鼠单抗 | WB, IHC, IF/ICC, FC (Intra), ELISA | human,mouse,rat | 2 |
| | 10856-1-AP | 兔多抗 | WB, IHC, IF/ICC, CoIP, ChIP, ELISA | human,mouse,pig,rat | 145 |
| | 81984-2-RR | 重组兔单抗 | WB, IHC, IF/ICC, FC (Intra), ELISA | human,mouse,rat | - |
| Histone H3 | 68345-1-Ig | 小鼠单抗 | WB, IHC, IF/ICC, FC (Intra), IP, ELISA | human,mouse,rat,pig,rabbit,canine,chicken,zebrafish,hamster,dog,wheat | 61 |
| | 17168-1-AP | 兔多抗 | WB, IHC, IF/ICC, FC (Intra), IP, CoIP, ChIP, ELISA | human,monkey,mouse,pig,rat,arabidopsis,chicken,fish,goat,yellow catfish | 1039 |
| Histone H4 | 16047-1-AP | 兔多抗 | WB, IHC, IF/ICC, FC (Intra), IP, CoIP, ChIP, RIP, ELISA | human,mouse,pig,rat,bovine,yeast | 70 |
| | 81302-6-RR | 重组兔单抗 | WB, IHC, IF-P, FC (Intra), ELISA | human,mouse,rat | - |
| PCNA | 60097-1-Ig | 小鼠单抗 | WB, IHC, IF/ICC, IP, CoIP, ELISA | human,mouse,pig,rabbit,rat,zebrafish | 171 |
| | 10205-2-AP | 兔多抗 | WB, IHC, IF/ICC, IF-P, IP, CoIP, ELISA, Cell treatment | human,medaka embryos,mouse,rabbit,rat,chicken,ducks,fish,goat,sheep | 1067 |

| 核孔 | | | | | |
|-------------|------------|-------|----------------------------|---------------------|--------|
| 抗体靶点 | 货号 | 抗体类型 | 适用应用 | 适用物种 | SCI 文献 |
| NUP50 | 67001-1-Ig | 小鼠单抗 | WB, IHC, ELISA | human,mouse | - |
| | 20798-1-AP | 兔多抗 | WB, IHC, ELISA | human,mouse,rat | 3 |
| NUP85 | 83288-1-RR | 重组兔单抗 | IF/ICC, FC (Intra), ELISA | human | - |
| | 15027-1-AP | 兔多抗 | WB, IHC, IF/ICC, ELISA | human,mouse,rat | 2 |
| NUP98-NUP96 | 12329-1-AP | 兔多抗 | WB, IHC, IF/ICC, IP, ELISA | human,mouse,pig | 5 |
| NUP153 | 86622-1-RR | 重组兔单抗 | WB, IF/ICC, ELISA | human, mouse | - |
| | 14189-1-AP | 兔多抗 | WB, IP, ELISA | human,mouse,pig,rat | 3 |

| 核膜 | | | | | |
|-----------|------------|-------|--|---|--------|
| 抗体靶点 | 货号 | 抗体类型 | 适用应用 | 适用物种 | SCI 文献 |
| Lamin A/C | 81042-1-RR | 重组兔单抗 | WB, IHC, IF/ICC, ELISA | human,mouse,rat | 2 |
| | 10298-1-AP | 兔多抗 | WB, IHC, IF/ICC, FC (Intra), IP, CoIP, ELISA | human,mouse,rat,monkey,duck | 266 |
| Lamin B1 | 80906-1-RR | 重组兔单抗 | WB, IHC, IF/ICC, ELISA | human,mouse,rat | 1 |
| | 66095-1-Ig | 小鼠单抗 | WB, IHC, IF/ICC, IF-P, FC (Intra), IP, CoIP, ELISA | human,mouse,rat,rabbit,bovine,canine,chicken,hamster,zebrafish | 432 |
| | 12987-1-AP | 兔多抗 | WB, IHC, IF/ICC, IF-P, FC (Intra), IP, CoIP, CHIP, ELISA | human,mouse,rat,monkey,pig,bombyx ori,canine,chicken,escherichia coli,hamster | 1293 |

| 核仁 | | | | | |
|---------------|------------|-------|---|---------------------|--------|
| 抗体靶点 | 货号 | 抗体类型 | 适用应用 | 适用物种 | SCI 文献 |
| B23/NPM1 | 82030-1-RR | 重组兔单抗 | WB, IHC, IF/ICC, IP, ELISA | human | - |
| | 60096-1-Ig | 小鼠单抗 | WB, IHC, IF/ICC, IP, CHIP, ELISA | human,mouse,rat | 44 |
| | 10306-1-AP | 兔多抗 | WB, IHC, IF/ICC, IP, CoIP, chip, ELISA | human,mouse,pig,rat | 41 |
| FBL | 66985-1-Ig | 小鼠单抗 | WB, IHC, IF/ICC, FC (Intra), IP, RIP, ELISA | human,mouse,rat | 7 |
| | 16021-1-AP | 兔多抗 | WB, IF/ICC, FC (Intra), IP, RIP, ELISA | human,mouse,rat | 33 |
| Nucleolin/C23 | 83380-1-RR | 重组兔单抗 | WB, IHC, IF/ICC, FC (Intra), IP, ELISA | human | - |
| | 10556-1-AP | 兔多抗 | WB, IHC, IF/ICC, IP, CoIP, RIP, ELISA | human,mouse,pig,rat | 52 |

| 线粒体 | | | | | |
|--------------|------------|-------|---|--|--------|
| 抗体靶点 | 货号 | 抗体类型 | 适用应用 | 适用物种 | SCI 文献 |
| AIF | 86156-3-RR | 重组兔单抗 | WB, ELISA | human,mouse,rat | - |
| | 67791-1-Ig | 小鼠单抗 | WB, IHC, IF/ICC, IF-P, ELISA | human,mouse,Pig,rat,canine | 6 |
| | 17984-1-AP | 兔多抗 | WB, IHC, IF/ICC, IP, ELISA | human,mouse,pig,rat,canine,sheep | 85 |
| ATP5A1 | RMX00023 | 重组兔多抗 | WB, IHC, IF/ICC, ELISA | human,mouse,rat | - |
| | 82288-1-RR | 重组兔单抗 | WB, IHC, IF/ICC, FC (Intra), ELISA | human,mouse,rat | - |
| | 66037-1-Ig | 小鼠单抗 | WB, IHC, IF/ICC, IP, ELISA | human,monkey,mouse,rat,hamster | 26 |
| | 14676-1-AP | 兔多抗 | WB, IHC, IF/ICC, IP, CoIP, ELISA | human,monkey,mouse,rat,hamster,zebrafish | 158 |
| COXIV | 82916-2-RR | 重组兔单抗 | IF/ICC, ELISA | human | - |
| | 66110-1-Ig | 小鼠单抗 | WB, IHC, IF, IP, ELISA | human,mouse,rat | 53 |
| | 11242-1-AP | 兔多抗 | WB, IHC, IF/ICC, IP, chip, ELISA | human,mouse,pig,rat,bovine,canine,goat | 482 |
| Cytochrome c | 83276-1-RR | 重组兔单抗 | WB, IF/ICC, FC (Intra), ELISA | human,mouse | - |
| | 66264-1-Ig | 小鼠单抗 | WB, IHC, IF/ICC, FC (Intra), ELISA | human,mouse,rat,canine | 128 |
| | 10993-1-AP | 兔多抗 | WB, IHC, IF-P, FC (Intra), ELISA | human,monkey,mouse,pig,rat,chicken,goat,hamster,hippospongia,sheep | 609 |
| HSP60 | 86275-1-RR | 重组兔单抗 | WB, IF/ICC, ELISA | human | - |
| | 66041-1-Ig | 小鼠单抗 | WB, IHC, IF/ICC, IP, ELISA | human,mouse,pig,rat,chicken,yeast | 60 |
| | 15282-1-AP | 兔多抗 | WB, IHC, IF/ICC, FC (Intra), IP, CoIP, ELISA | human,mouse,pig,rat,chicken,duck,fish,goat,yeast,zebrafish | 161 |
| IMMT | 68226-1-Ig | 小鼠单抗 | WB, IHC, IF/ICC, FC (Intra), ELISA | human,mouse,rat | 1 |
| | 10179-1-AP | 兔多抗 | WB, IHC, IF/ICC, FC (Intra), IP, CoIP, ELISA | human,mouse,rat,hamster | 109 |
| TFAM | 68557-5-Ig | 小鼠单抗 | WB, IHC, IF/ICC, ELISA | human | - |
| | 22586-1-AP | 兔多抗 | WB, IHC, IF/ICC, IP, chip, ELISA | human,chicken,goat,zebrafish | 169 |
| TOM20 | 80501-1-RR | 重组兔单抗 | WB, IHC, IF/ICC, ELISA | human,mouse,pig,rat,chicken,zebrafish | 1 |
| | 66777-1-Ig | 小鼠单抗 | WB, IHC, IF/ICC, FC (Intra), ELISA | human,bovine,chicken,monkey | 64 |
| | 11802-1-AP | 兔多抗 | WB, IHC, IF/ICC, IP, CoIP, ELISA | human,monkey,mouse,pig,rabbit,rat,cattle,chicken,hamster,zebrafish | 700 |
| VDAC1/2 | 10866-1-AP | 兔多抗 | WB, IHC, IF-P, IF-Fro, FC (Intra), CoIP, ELISA | human,monkey,mouse,peris rapae,pig,rabbit,rat,zebrafish | 188 |
| VDAC1/Porin | 81538-1-RR | 重组兔单抗 | WB, IHC, IF-P, FC (Intra), IP, ELISA | human,mouse,rat | 4 |
| | 66345-1-Ig | 小鼠单抗 | WB, IHC, IF-P, FC (Intra), IP, CoIP, ELISA | human,mouse,pig,rat | 37 |
| | 55259-1-AP | 兔多抗 | WB, IHC, IF-P, IF-Fro, FC (Intra), CoIP, ELISA, PLA | human,monkey,mouse,pig,rat,bovine,canine,chicken,duck,hamster | 197 |

| 高尔基体 | | | | | |
|-----------------|------------|-------|--|---------------------------------------|--------|
| 抗体靶点 | 货号 | 抗体类型 | 适用应用 | 适用物种 | SCI 文献 |
| GOLGA2/GM130 | 82705-8-RR | 重组兔单抗 | WB, IHC, IF/ICC, ELISA | human,rat | - |
| | 66662-1-Ig | 小鼠单抗 | WB, IF/ICC, ELISA | human,mouse,rat | 17 |
| | 11308-1-AP | 兔多抗 | WB, IHC, IF/ICC, FC (Intra), IP, ELISA | human,monkey,canine,hamster,zebrafish | 150 |
| golgin 97 | 83009-4-RR | 重组兔单抗 | WB, IHC, IF/ICC, FC (Intra), ELISA | human | - |
| | 12640-1-AP | 兔多抗 | WB, IHC, IF/ICC, FC (Intra), IP, ELISA | human,monkey,mouse | 31 |
| GP73/GOLPH2 | 81893-1-RR | 重组兔单抗 | WB, IHC, IF/ICC, ELISA | human | - |
| | 66331-1-Ig | 小鼠单抗 | WB, IHC, IF/ICC, ELISA | human,mouse | 5 |
| | 15126-1-AP | 兔多抗 | WB, IHC, IF/ICC, IP, ELISA | human,mouse | 16 |
| GRASP65,GORASP1 | 66651-1-Ig | 小鼠单抗 | WB, IHC, IF/ICC, ELISA | human,mouse,rat | 4 |
| | 10747-2-AP | 兔多抗 | WB, IF/ICC, ELISA | human,mouse,rat | 10 |
| Syntaxin 6 | 84627-5-RR | 重组兔单抗 | WB, IHC, IF/ICC, IP, ELISA | human,mouse,rat | - |
| | 60059-1-Ig | 小鼠单抗 | WB, IHC, IF/ICC, ELISA | human,mouse,rat | 2 |
| | 10841-1-AP | 兔多抗 | WB, IHC, IF/ICC, IP, ELISA | human,mouse,rat | 20 |
| TGN46 | 83099-2-RR | 重组兔单抗 | WB, IHC, IF/ICC, FC (Intra), IP, ELISA | human | - |
| | 66477-1-Ig | 小鼠单抗 | WB, IHC, ELISA | human,mouse,Pig,rat | 11 |
| | 13573-1-AP | 兔多抗 | WB, IHC, IF/ICC, IF-P, IP, ELISA | human,monkey,mouse,hamster,pig | 39 |

| 内质网 | | | | | |
|--------------|------------|-------|--|---|--------|
| 抗体靶点 | 货号 | 抗体类型 | 适用应用 | 适用物种 | SCI 文献 |
| Calnexin | 81938-1-RR | 重组兔单抗 | WB, IHC, IF/ICC, ELISA | human,mouse,rat | 5 |
| | 66903-1-Ig | 小鼠单抗 | WB, IHC, IF/ICC, ELISA | human,mouse,pig,rabbit,rat | 78 |
| | 10427-2-AP | 兔多抗 | WB, IHC, IF/ICC, FC (Intra), IP, CoIP, ELISA | human,monkey,mouse,pig,rat,goat,hamster | 494 |
| CHOP/GADD153 | 81462-1-RR | 重组兔单抗 | WB, ELISA | human | - |
| | 66741-1-Ig | 小鼠单抗 | WB, IHC, IF, ELISA | human,mouse,pig,rabbit,rat,shrew | 49 |
| | 15204-1-AP | 兔多抗 | WB, IHC, IF/ICC, FC (Intra), IP, CoIP, ChIP, ELISA | human,mouse,pig,rabbit,rat,bovine,canine,chicken,hamster,zebrafish | 641 |
| ERp72 | 86239-1-RR | 重组兔单抗 | WB, IF/ICC, ELISA | human,mouse | - |
| | 66365-1-Ig | 小鼠单抗 | WB, IHC, IF, ELISA | human,mouse,rat | 6 |
| | 14712-1-AP | 兔多抗 | WB, IHC, IF/ICC, FC (Intra), IP, CoIP, ELISA | human,monkey,mouse,pig,rat | 45 |
| GRP78/BIP | 80849-1-RR | 重组兔单抗 | WB, IHC, IF, IP, ELISA | human,mouse,Pig,rat | 1 |
| | 66574-1-Ig | 小鼠单抗 | WB, IHC, IF/ICC, IP, CoIP, ELISA | human,mouse,pig,rat,chicken,zebrafish | 94 |
| | 11587-1-AP | 兔多抗 | WB, IHC, IF/ICC, FC (Intra), IP, CoIP, ELISA | human,monkey,mouse,rabbit,rat,carp,chicken,deer,goat,medaka embryos | 717 |
| GRP94 | 83147-5-RR | 重组兔单抗 | WB, IHC, IF/ICC, FC (Intra), IP, ELISA | human,pig | - |
| | 60012-2-Ig | 小鼠单抗 | WB, IHC, IF/ICC, FC (Intra), ELISA | human,mouse | 9 |
| | 14700-1-AP | 兔多抗 | WB, IHC, IF, FC (Intra), IP, CoIP, ELISA | human,mouse,rat | 51 |
| PDI | 80170-1-RR | 重组兔单抗 | WB, IHC, ELISA | human,mouse,rat | 1 |
| | 66422-1-Ig | 小鼠单抗 | WB, IHC, IF/ICC, ELISA | human,mouse,pig,rat,bovine | 19 |
| | 11245-1-AP | 兔多抗 | WB, IHC, IF/ICC, FC (Intra), IP, ELISA | human,monkey,mouse,pig,rat,zebrafish | 63 |

| 核糖体 | | | | | |
|----------------------|------------|-------|---|---|--------|
| 抗体靶点 | 货号 | 抗体类型 | 适用应用 | 适用物种 | SCI 文献 |
| RPL26 | 85775-1-RR | 重组兔单抗 | WB, IF/ICC, ELISA | human,Monkey,mouse,rat | - |
| | 17619-1-AP | 兔多抗 | WB, IHC, IF/ICC, CoIP, ELISA | human,monkey,mouse | 9 |
| RPL7A | 86270-4-RR | 重组兔单抗 | WB, IF/ICC, ELISA | human,mouse,rat | - |
| | 15340-1-AP | 兔多抗 | WB, IHC, IF/ICC, IP, ELISA | human,mouse,rat | 10 |
| RPS3 | 84947-4-RR | 重组兔单抗 | WB, IF/ICC, ELISA | human,mouse,rat | - |
| | 66046-1-Ig | 小鼠单抗 | WB, IHC, IF/ICC, IP, ChIP, ELISA | human,mouse,rat | 16 |
| | 11990-1-AP | 兔多抗 | WB, IHC, IF/ICC, IP, ELISA | human,mouse,pig,rat | 22 |
| S6 Ribosomal protein | 80208-1-RR | 重组兔单抗 | WB, IF/ICC, ELISA | human,mouse,rat,zebrafish | 5 |
| | 66886-1-Ig | 小鼠单抗 | WB, IHC, IF/ICC, FC (Intra), ELISA | human,mouse,rat | 15 |
| Histone H4 | 16047-1-AP | 兔多抗 | WB, IHC, IF/ICC, FC (Intra), IP, CoIP, ChIP, RIP, ELISA | human,mouse,pig,rat,bovine,yeast | 70 |
| | 81302-6-RR | 重组兔单抗 | WB, IHC, IF-P, FC (Intra), ELISA | human,mouse,rat | - |
| PCNA | 60097-1-Ig | 小鼠单抗 | WB, IHC, IF/ICC, IP, CoIP, ELISA | human,mouse,pig,rabbit,rat,zebrafish | 171 |
| | 10205-2-AP | 兔多抗 | WB, IHC, IF/ICC, IF-P, IP, CoIP, ELISA, Cell treatment | human,medaka embryos,mouse,rabbit,rat,chicken,ducks,fish,goat,sheep | 1067 |

| 外泌体 | | | | | |
|-------------|------------|-------|--|---|--------|
| 抗体靶点 | 货号 | 抗体类型 | 适用应用 | 适用物种 | SCI 文献 |
| Alix | 67715-1-Ig | 小鼠单抗 | WB, IHC, IF/ICC, ELISA | human,mouse,rat,monkey | 16 |
| | 12422-1-AP | 兔多抗 | WB, IHC, IF/ICC, IP, ELISA | human,mouse,rat,hamster,monkey,pig,rabbit | 256 |
| CD9 | RMX00018 | 重组兔多抗 | WB, IHC, IF/ICC, ELISA | human | - |
| | 84142-1-RR | 重组兔单抗 | WB, IHC, IF/ICC, ELISA | human | - |
| | 60232-1-Ig | 小鼠单抗 | WB, IHC, IF/ICC, IF-P, ELISA, PLA | human,rabbit | 118 |
| CD63 | 20597-1-AP | 兔多抗 | WB, IHC, IF/ICC, IP, ELISA | human,mouse,rat,rabbit,bovine,chicken,goat,monkey,pig,zebrafish | 328 |
| | 84507-4-RR | 重组兔单抗 | WB, IHC, IF/ICC, ELISA | human | - |
| | 67605-1-Ig | 小鼠单抗 | WB, IHC, IF-P, ELISA | human, rat, goat | 87 |
| CD81 | 25682-1-AP | 兔多抗 | WB, IHC, IF/ICC, IF-P, IP, ChIP, ELISA | human, chicken, goat, hamster, monkey, pig, rabbit, zebrafish | 447 |
| | 84644-1-RR | 重组兔单抗 | WB, ELISA | human | - |
| | 66866-1-Ig | 小鼠单抗 | WB, IHC, IF-P, ELISA | human, monkey, pig, rabbit | 180 |
| Flotillin 1 | 27855-1-AP | 兔多抗 | WB, IHC, IF, ELISA | human,mouse,rat,canine,zebrafish | 88 |
| | 83598-4-RR | 重组兔单抗 | WB, IHC, IF/ICC, IP, ELISA | human,mouse,rat | - |
| | 67968-1-Ig | 小鼠单抗 | WB, FC (Intra), ELISA | human,mouse,rat,pig,rabbit | - |
| HSP70 | 15571-1-AP | 兔多抗 | WB, IHC, IF, IP, CoIP, ELISA | human,mouse,rat | 52 |
| | 80735-1-RR | 重组兔单抗 | WB, IHC, IF/ICC, ELISA | human,mouse,rat,yeast | 2 |
| | 66183-1-Ig | 小鼠单抗 | WB, IHC, IF/ICC, FC (Intra), CoIP, ELISA | human,mouse,rat,yeast | 41 |
| HSP90 | 10995-1-AP | 兔多抗 | WB, IHC, IF/ICC, FC (Intra), IP, ELISA | human,mouse,rat,rabbit,chicken,zebrafish,sheep,goat,ostrich | 327 |
| | 83950-5-RR | 重组兔单抗 | WB, IHC, IF/ICC, FC (Intra), ELISA | human,mouse,rat | - |
| | 60318-1-Ig | 小鼠单抗 | WB, IHC, IF/ICC, IP, CoIP, RIP, ELISA | human,mouse,rat,pig,monkey,chicken | 102 |
| TSG101 | 13171-1-AP | 兔多抗 | WB, IHC, IF/ICC, FC (Intra), IP, ELISA | human,mouse,rat,pig,rabbit,chicken,bovine,sheep,fish,carp | 394 |
| | RMX00026 | 重组兔多抗 | WB, IHC, IF/ICC, IP, ELISA | human,mouse,rat | - |
| | 84334-4-RR | 重组兔单抗 | WB, IHC, IF/ICC, ELISA | human,mouse,rat | - |
| | 67381-1-Ig | 小鼠单抗 | WB, IHC, IF/ICC, IF-P, ELISA | human,mouse,rat,Rabbit,Monkey | 55 |
| | 28283-1-AP | 兔多抗 | WB, IHC, IF/ICC, IP, CoIP, ELISA | human,mouse,rat,rabbit,chicken,goat,hamster,monkey | 321 |

| 纤毛 | | | | | |
|------------------------|------------|-------|----------------------------------|---|--------|
| 抗体靶点 | 货号 | 抗体类型 | 适用应用 | 适用物种 | SCI 文献 |
| Acetyl-Tubulin (Lys40) | 66200-1-Ig | 小鼠单抗 | WB, IHC, IF/ICC, IF-P, ELISA | bovine,canine,drosophila,human,mouse,pig,rabbit,rat,zebrafish | 104 |
| | 19492-1-AP | 兔多抗 | WB, IHC, IF/ICC, IF-P, IP, ELISA | canine,human,mouse,rat | 17 |
| ARL13B | 82834-2-RR | 重组兔单抗 | IF/ICC, ELISA | human | - |
| | 66739-1-Ig | 小鼠单抗 | WB, IHC, IF/ICC, IF-Fro, ELISA | canine,human,mouse,pig,rat | 23 |
| IFT20 | 17711-1-AP | 兔多抗 | WB, IHC, IF/ICC, IP, ELISA | canine,chicken,human,monkey,mouse,pig,rat,sheep,xenopus,zebrafish | 851 |
| | 13615-1-AP | 兔多抗 | WB, IHC, IF/ICC, IP, CoIP, ELISA | canine,human,mouse,rat,zebrafish | 79 |
| IFT88 | 82886-2-RR | 重组兔单抗 | WB, IF/ICC, ELISA | human | - |
| | 82886-1-RR | 重组兔单抗 | WB, IHC, ELISA | human,mouse,rat | - |
| | 60227-1-Ig | 小鼠单抗 | WB, IHC, IF, IP, ELISA | human,mouse,rat | 7 |
| | 13967-1-AP | 兔多抗 | WB, IHC, IF/ICC, IP, CoIP, ELISA | canine,chicken,human,mouse,pig,rat,zebrafish | 384 |

| 溶酶体 | | | | | |
|----------------|------------|-------|--------------------------------|--|--------|
| 抗体靶点 | 货号 | 抗体类型 | 适用应用 | 适用物种 | SCI 文献 |
| CD107a / LAMP1 | RMX00025 | 重组兔多抗 | WB, IF/ICC, ELISA | human | - |
| | 84658-5-RR | 重组兔单抗 | WB, IHC, IF/ICC, ELISA | human | - |
| | 86337-2-RR | 重组兔单抗 | WB, IF/ICC, IF-P, ELISA | mouse | - |
| | 67300-1-Ig | 小鼠单抗 | WB, IHC, IF-P, ELISA | bovine,human | 28 |
| | 21997-1-AP | 兔多抗 | WB, IHC, IF-P, IP, CoIP, ELISA | bovine,human,monkey,pig,turtle,zebrafish | 150 |
| CD107b / LAMP2 | 86269-3-RR | 重组兔单抗 | WB, IF/ICC, ELISA | human | - |
| | 84474-5-RR | 重组兔单抗 | WB, IHC, IF/ICC, ELISA | mouse | - |
| | 66301-1-Ig | 小鼠单抗 | WB, IHC, IP, CoIP, ELISA | bovine,chicken,human,mouse,pig | 131 |
| LIMP2 | 27823-1-AP | 兔多抗 | WB, IHC, IF, ELISA | human,pig | 66 |
| | 84193-4-RR | 重组兔单抗 | WB, ELISA | human | - |
| | 27102-1-AP | 兔多抗 | WB, IHC, ELISA | human,mouse | 6 |

| 过氧化物酶体 | | | | | |
|-----------------------|------------|-------|--|--|--------|
| 抗体靶点 | 货号 | 抗体类型 | 适用应用 | 适用物种 | SCI 文献 |
| ABCD3 | 87047-1-RR | 重组兔单抗 | WB, ELISA | human,mouse,rat | - |
| | 66697-1-Ig | 小鼠单抗 | WB,IF,ELISA | human,mouse | 6 |
| ACOX1 | RMX00007 | 重组兔多抗 | WB, IHC, IF/ICC, IP, ELISA | human,mouse,rat | - |
| | 83731-2-RR | 重组兔单抗 | WB, IHC, FC (Intra), ELISA | human,mouse,rat | - |
| | 68017-1-Ig | 小鼠单抗 | WB, IHC, IF, FC (Intra), ELISA | human,mouse,pig,rat | 8 |
| | 10957-1-AP | 兔多抗 | WB, IHC, IF/ICC, ELISA | bovine,chicken,human,mouse,rat | 111 |
| Catalase | 66765-1-Ig | 小鼠单抗 | WB, IHC, IF/ICC, ELISA | goat,human,mouse,pig,rat | 30 |
| | 21260-1-AP | 兔多抗 | WB, IHC, IF, IP, ELISA | bat,bovine,chicken,goat,human,meretrixmeretrix,mouse,pig,rat,sheep | 174 |
| Catalase-Specific | 19792-1-AP | 兔多抗 | WB, IHC, IF/ICC, ELISA | human,mouse | 7 |
| PEX5 | 66309-1-Ig | 小鼠单抗 | WB, IHC, ELISA | human,pig,rat | 1 |
| | 12545-1-AP | 兔多抗 | WB, IHC, IF/ICC, FC (Intra), IP, CoIP, ELISA | human,mouse,rat | 18 |
| PEX14 | 80234-1-RR | 重组兔单抗 | WB, IHC, IF/ICC, ELISA | human,rat | - |
| | 10594-1-AP | 兔多抗 | WB, IHC, IF/ICC, FC (Intra), IP, ELISA | chicken,human,monkey,mouse,rat,yeast | 68 |
| PEX14(human specific) | 80196-1-RR | 重组兔单抗 | WB, IHC, IF/ICC, FC (Intra), ELISA | human | - |

| 自噬体 | | | | | |
|---------------|------------|-------|--|--|--------|
| 抗体靶点 | 货号 | 抗体类型 | 适用应用 | 适用物种 | SCI 文献 |
| LC3 | 14600-1-AP | 兔多抗 | WB, IHC, IF/ICC, FC (Intra), IP, CoIP, ELISA | chicken,goat,hamster,human,monkey,mouse,rabbit,rat,sheep,zebrafish | 1590 |
| LC3B-Specific | 81004-1-RR | 重组兔单抗 | WB, IHC, IF/ICC, ELISA | bovine,Human,mouse,pig,rat,sheep | 28 |
| | 18725-1-AP | 兔多抗 | WB, IHC, IF/ICC, FC (Intra), IP, ELISA | bovine,human,mouse,pig,rat,zebrafish | 366 |
| LC3A-Specific | 18722-1-AP | 兔多抗 | WB, IHC, IF, ELISA | human,mouse,rat,zebrafish | 13 |
| P62/SQSTM1 | 84826-1-RR | 重组兔单抗 | WB, IHC, IF/ICC, FC (Intra), IP, ELISA | human,mouse,rat | 1 |
| | 66184-1-Ig | 小鼠单抗 | WB, IHC, IF/ICC, IP, CoIP, ELISA | bovine,hamster,human,monkey,pig | 178 |
| | 18420-1-AP | 兔多抗 | WB, IHC, IF/ICC, FC (Intra), IP, CoIP, ELISA | chicken,goat,goslings,human,monkey,rabbit,sheep,zebrafish | 1834 |

| 内体 | | | | | |
|----------|------------|-------|--|---|--------|
| 抗体靶点 | 货号 | 抗体类型 | 适用应用 | 适用物种 | SCI 文献 |
| CD63 | 84507-4-RR | 重组兔单抗 | WB, IHC, IF/ICC, ELISA | human | - |
| | 67605-1-Ig | 小鼠单抗 | WB, IHC, IF-P, ELISA | human, rat, goat | 87 |
| | 25682-1-AP | 兔多抗 | WB, IHC, IF/ICC, IF-P, IP, ChIP, ELISA | human, chicken, goat, hamster, monkey, pig, rabbit, zebrafish | 447 |
| EEA1 | 81245-1-RR | 重组兔单抗 | WB, ELISA | human,mouse,rat | - |
| | 68065-1-Ig | 小鼠单抗 | WB, IHC, IF/ICC, ELISA | human,monkey,mouse,rat | 15 |
| | 28347-1-AP | 兔多抗 | WB, IHC, IF/ICC, ELISA | human,monkey,mouse,rat | 11 |
| RAB5A | 83949-4-RR | 重组兔单抗 | WB, ELISA | human,mouse,rat | - |
| | 66339-1-Ig | 小鼠单抗 | WB, IHC, IF/ICC, ELISA | human,monkey,mouse,pig | 7 |
| | 11947-1-AP | 兔多抗 | WB, IHC, IF, IP, ELISA | human,mouse,pig,rat | 41 |
| RAB7A | 84741-1-RR | 重组兔单抗 | WB, IHC, IF/ICC, FC (Intra), ELISA | human,mouse,rat | - |
| | 55469-1-AP | 兔多抗 | WB, IHC, IF/ICC, FC (Intra), IP, ELISA | human,monkey,mouse,pig,rat,zebrafish | 70 |
| RAB11A | 67902-1-Ig | 小鼠单抗 | WB, IHC, IF/ICC, FC (Intra), ELISA | human,mouse,pig,rabbit,rat | 3 |
| | 20229-1-AP | 兔多抗 | WB, IHC, IF/ICC, IP, ELISA | canine,human,mouse,rat | 23 |
| RAB11A/B | 15903-1-AP | 兔多抗 | WB, IHC, IF/ICC, IP, CoIP, ELISA | bovine,canine,human,monkey,mouse,pig | 40 |

| 中心体 | | | | | |
|---------------|------------|-------|--|---|--------|
| 抗体靶点 | 货号 | 抗体类型 | 适用应用 | 适用物种 | SCI 文献 |
| CENPJ | 11517-1-AP | 兔多抗 | WB, IHC, IF/ICC, ELISA | human,mouse,rat,zebrafish | 52 |
| Centrin 1 | 68433-1-Ig | 小鼠单抗 | IF/ICC, ELISA | human | - |
| | 12794-1-AP | 兔多抗 | WB, IF/ICC, ELISA | human,mouse,zebrafish | 44 |
| CEP250/CNAP1 | 66814-1-Ig | 小鼠单抗 | WB, IHC, IF/ICC, ELISA | human,mouse | 2 |
| | 14498-1-AP | 兔多抗 | WB, IHC, IF/ICC, IP, ELISA | human,mouse | 35 |
| CP110 | 80965-5-RR | 重组兔单抗 | WB, IHC, IF/ICC, ELISA | human | - |
| | 66448-1-Ig | 小鼠单抗 | WB, IF, IHC, ELISA | human,mouse | 2 |
| | 12780-1-AP | 兔多抗 | WB, IHC, IF/ICC, FC (Intra), IP, ELISA | canine,drosophila,human,mouse,rat,xenopus,zebrafish | 159 |
| Gamma Tubulin | 66320-1-Ig | 小鼠单抗 | WB, IHC, IF/ICC, FC (Intra), ELISA | canine,human,mouse,rat | 30 |
| | 15176-1-AP | 兔多抗 | WB, IHC, IF, FC (Intra), IP, ELISA | human, mouse, rat, canine | - |
| Ninein | 84937-1-RR | 重组兔单抗 | WB, ELISA | human | 23 |
| | 67132-1-Ig | 小鼠单抗 | WB, IHC, IF/ICC, ELISA | canine,human,mouse | 3 |
| | 13007-1-AP | 兔多抗 | WB, IHC, IF/ICC, ELISA | human,mouse | 3 |
| Pericentrin | 60919-1-Ig | 小鼠单抗 | IF/ICC, ELISA | human | - |
| | 22271-1-AP | 兔多抗 | IHC, IF/ICC, ELISA | canine,human,mouse | 4 |

| 细胞连接相关流式抗体 | | | |
|-------------------|------------|----------|-------------|
| 靶点名称 | 裸抗货号 | 克隆号 | 抗体类型 |
| Anti-Human | | | |
| E-cadherin | 98123-1-RR | 241098F7 | 重组流抗 |
| | 98030-1-RR | 240159G8 | 重组流抗 |
| | FcA98123 | 241098F7 | FcZero-rAb* |
| N-cadherin | 98006-1-RR | 230259D7 | 重组流抗 |
| | FcA98006 | 230259D7 | FcZero-rAb* |
| VE-cadherin/CD144 | 98071-1-RR | 240755B2 | 重组流抗 |
| | FcA98071 | 240755B2 | FcZero-rAb* |
| Anti-Mouse | | | |
| E-cadherin | 98140-1-RR | 241282C1 | 重组流抗 |
| | FcA98140 | 241282C1 | FcZero-rAb* |
| VE-cadherin/CD144 | 98251-1-RR | 241953D4 | 重组流抗 |
| | FcA98251 | 241953D4 | FcZero-rAb* |

| 外泌体相关流式抗体 | | | |
|------------|------------|----------|-------------|
| 靶点名称 | 裸抗货号 | 克隆号 | 抗体类型 |
| Anti-Human | | | |
| CD9 | 98095-1-RR | 240830E6 | 重组流抗 |
| | FcA98095 | 240830E6 | FcZero-rAb* |
| CD63 | 98318-1-RR | 241964E1 | 重组流抗 |
| CD81 | 98202-1-RR | 241722G4 | 重组流抗 |
| | 65644-1-RR | 5A6 | 重组流抗 |
| CD82 | 98278-1-RR | 241765F7 | 重组流抗 |
| Anti-Mouse | | | |
| CD9 | 98270-1-RR | 242432C7 | 重组流抗 |

| 溶酶体相关流式抗体 | | | |
|----------------|------------|----------|-------|
| 靶点名称 | 裸抗货号 | 克隆号 | 抗体类型 |
| Anti-Human | | | |
| CD107a / LAMP1 | 98266-2-RR | 242116E8 | 重组流抗 |
| | 65596-1-MR | H4A3 | 重组流抗 |
| CD107b / LAMP2 | 65051-1-Ig | H4A3 | 杂交瘤流抗 |
| | 65566-1-MR | H4B4 | 重组流抗 |
| Anti-Mouse | | | |
| CD107a / LAMP1 | 98537-2-RR | 250972H5 | 重组流抗 |
| | 65050-1-Ig | 1D4B | 杂交瘤流抗 |
| CD107b / LAMP2 | 65052-1-Ig | ABL-93 | 杂交瘤流抗 |

FcZero-rAb*: Fc 沉默重组流式抗体, 采用 Fc 沉默及定点定量标记专利技术, 完全消除 Fc 效应, 无需使用 Fc 受体封闭剂, 同时可保证各批次荧光强度的高度均一和重复。

更多产品登录官网查看 ptgcn.com

扫码查看细胞器标志物通路海报

