

PRODUCT FOCUS: ANTIBODIES FOR EXOSOME MARKERS

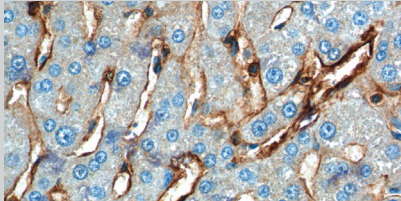
Notable Proteintech[®] antibodies for exosome markers.

Please Note: All products featured in this product focus are for research use only.

Antibody Name	Cat. No.	Type	Applications
14-3-3 epsilon	1 11648-2-AP	Rabbit Poly	ELISA, FC, IF, IHC, IP, WB
Albumin	12 16475-1-AP	Rabbit Poly	ELISA, IHC, IP, WB
Albumin	3 66051-1-Ig	Mouse Mono	ELISA, IF, IHC, IP, WB
ALDOA	7 11217-1-AP	Rabbit Poly	ELISA, FC, IF, IHC, IP, WB

Antibody Name	Cat. No.	Type	Applications
CD9	K 60232-1-Ig	Mouse Mono	ELISA, IHC, WB
Cofilin	K 8 10960-1-AP	Rabbit Poly	ELISA, IF, IHC, WB
Cofilin	1 66057-1-Ig	Mouse Mono	ELISA, IF, IHC, WB
EEF1A1	5 11402-1-AP	Rabbit Poly	ELISA, IF, IHC, WB
EEF2	2 20107-1-AP	Rabbit Poly	ELISA, IF, IHC, IP, WB

Antibody Name
Annexin A2
Catalog Number
11256-1-AP
Type
Rabbit Polyclonal
Applications
ELISA, IF, IHC, IP, WB

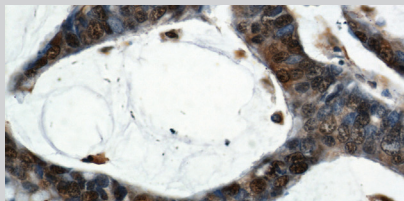


15 Publications

KD/KO Validated

Immunohistochemistry of paraffin-embedded human liver tissue slide using Annexin A2 antibody (11256-1-AP) at a dilution of 1:200 (40x objective).

Antibody Name
ENO1
Catalog Number
11204-1-AP
Type
Rabbit Polyclonal
Applications
ELISA, FC, IF, IHC, IP, WB



18 Publications

Immunohistochemistry of paraffin-embedded human colon cancer using ENO1 antibody (11204-1-AP) at a dilution of 1:50 (40x objective).

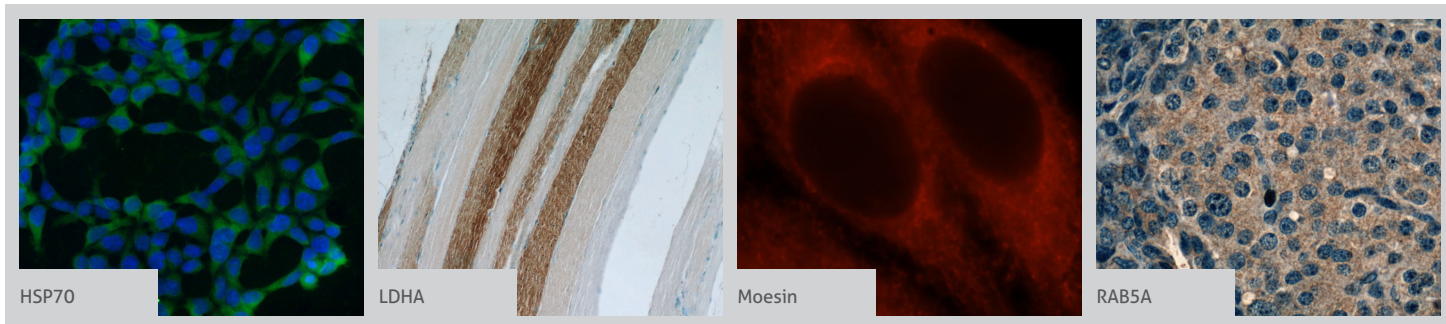
Annexin A2	1 60051-1-Ig	Mouse Mono	ELISA, FC, IF, IHC, IP, WB
Annexin A2	2 66035-1-Ig	Mouse Mono	ELISA, FC, IF, IHC, WB
Annexin V	11060-1-AP	Rabbit Poly	ELISA, FC, IF, IHC, IP, WB
Annexin V	66245-1-Ig	Mouse Mono	ELISA, FC, IF, IHC, WB
beta Actin	K 101 20536-1-AP	Rabbit Poly	ELISA, IF, IHC, WB
beta Actin	627 60008-1-Ig	Mouse Mono	ELISA, FC, IF, IHC, WB
beta Actin	K 128 66009-1-Ig	Mouse Mono	ELISA, FC, IF, IHC, IP, WB
beta Actin	1 HRP-60008	Mouse Mono	ELISA, WB
CD63	3 25682-1-AP	Rabbit Poly	ELISA, IF, IHC, WB
CD81	2 18250-1-AP	Rabbit Poly	ELISA, IHC
CD82	10248-1-AP	Rabbit Poly	ELISA, IHC, WB
CD9	1 20597-1-AP	Rabbit Poly	ELISA, FC, IHC, WB

ENO1	55237-1-AP	Rabbit Poly	ELISA, IF, IHC, IP, WB
EPCAM	8 21050-1-AP	Rabbit Poly	ELISA, IF, IHC, WB
EPCAM	66316-1-Ig	Mouse Mono	ELISA, IF, IHC, WB
Flotillin 1	4 15571-1-AP	Rabbit Poly	ELISA, FC, IF, IP, WB
gamma Actin	11227-1-AP	Rabbit Poly	ELISA, WB
GAPDH	500 10494-1-AP	Rabbit Poly	ELISA, FC, IF, IHC, IP
GAPDH	503 60004-1-Ig	Mouse Mono	ELISA, FC, IF, IHC, IP, WB
GAPDH	22 HRP-60004	Mouse Mono	ELISA, WB
Hsc70	K 9 10654-1-AP	Rabbit Poly	ELISA, IF, IHC, IP, WB
Hsc70	66442-1-Ig	Mouse Mono	ELISA, IHC, WB
HSP70	8 10995-1-AP	Rabbit Poly	ELISA, FC, IF, IHC, IP, WB

00 This number shows the amount of times our antibody has been cited in a publication.

K This icon shows that the antibody has been validated using siRNA knockdown/knockout experiment.

More validation images available on our website.



Antibody Name	Cat. No.	Type	Applications
HSP70	1 66183-1-Ig	Mouse Mono	ELISA, IF, IHC, WB
HSP70	1 25405-1-AP	Rabbit Poly	ELISA, IP, WB
HSP90	16 13171-1-AP	Rabbit Poly	ELISA, FC, IF, IHC, IP, WB
HSP90	1 60318-1-Ig	Mouse Mono	ELISA, FC, IHC, WB
HSP90AB1	3 11405-1-AP	Rabbit Poly	ELISA, FC, IF, IHC, IP, WB
LDHA	4 21799-1-AP	Rabbit Poly	ELISA, IF, IHC, IP, WB
LDHA	66287-1-Ig	Mouse Mono	ELISA, IF, IHC, WB

Antibody Name	Cat. No.	Type	Applications
Moesin	1 16495-1-AP	Rabbit Poly	ELISA, FC, IF, IHC, WB
MSN	26053-1-AP	Rabbit Poly	ELISA, IF, WB
PDCD6IP	7 12422-1-AP	Rabbit Poly	ELISA, IF, IP, WB
PGK1	5 17811-1-AP	Rabbit Poly	ELISA, IHC, WB
PKM	K 2 10078-2-AP	Rabbit Poly	ELISA, IF, IHC, WB
PKM	K 25659-1-AP	Rabbit Poly	ELISA, IF, IHC, WB
PKM1-specific	K 20 15821-1-AP	Rabbit Poly	ELISA, IF, IHC, IP, WB
PKM2-specific	K 14 15822-1-AP	Rabbit Poly	ELISA, IF, IHC, IP, WB
PKM2-specific	K 1 60268-1-Ig	Mouse Mono	ELISA, FC, IF, IHC, IP, WB
RAB5A	K 4 11947-1-AP	Rabbit Poly	ELISA, IF, IHC, IP, WB
RAB5A	66339-1-Ig	Mouse Mono	ELISA, IF, IHC, WB
RAB5B	K 1 17605-1-AP	Rabbit Poly	ELISA, WB
Syntenin-1	2 22399-1-AP	Rabbit Poly	ELISA, FC, IF, IHC, IP, WB
TSG101	K 14 14497-1-AP	Rabbit Poly	ELISA, FC, IF, IHC, IP, WB
YWHAZ	K 2 14881-1-AP	Rabbit Poly	ELISA, WB

Antibody Name
LDHA-Specific

Catalog Number
19987-1-AP

Type
Rabbit Polyclonal

Applications
ELISA, FC, IF, IHC, IP, WB

19 Publications

KD/KO Validated

A431 cells were subjected to SDS PAGE followed by western blot with LDHA-Specific antibody (19987-1-AP) at a dilution of 1:2000.

00 This number shows the amount of times our antibody has been cited in a publication.

K This icon shows that the antibody has been validated using siRNA knockdown/knockout experiment.

FROM OUR BENCH TO YOUR BENCH™

Proteintech® makes every antibody in its 12,000-strong catalog.

