

常用不随意，内参选精品！

全系列内参 / 标签抗体



1 文献明星抗体

2 抗体类型丰富

3 提供多种偶联物

4 种属覆盖广泛

5 实验应用齐全

6 多技术验证特异性

内参抗体

CreAb NO.1 **GAPDH Monoclonal Antibody**
(货号: 60004-1-Ig)

10530 publications

Selected Citations:

1. Nature. 2024 Jun;630(8016):437-446.
2. Cell. 2024 Apr 25;187(9):2209-2223.e16.
3. Cell. 2024 Feb 1;187(3):624-641.e23.
4. Cell. 2024 Jan 18;187(2):294-311.e21.
5. Cancer Cell. 2024 May 13;42(5):885-903.e4.

标签抗体

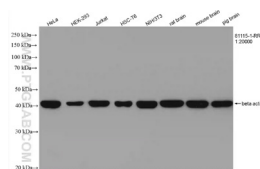
CreAb NO.1 **6*His, His-Tag Monoclonal Antibody**
(货号: 66005-1-Ig)

846 publications

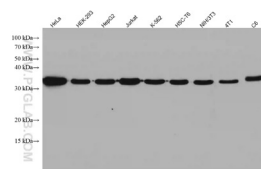
Selected Citations:

1. Nature. 2024 May;629(8013):893-900.
2. Cell. 2024 Mar 14;187(6):1440-1459.e24.
3. Signal Transduct Target Ther. 2024 Mar 25;9(1):74.
4. Nat Nanotechnol. 2024 Mar;19(3):345-353.
5. Protein Cell. 2024 Apr 1;15(4):261-284.

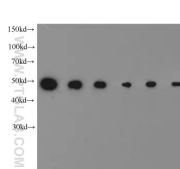
免疫印迹



Beta Actin 重组兔单抗 (货号: 81115-1-RR)
WB: 1: 20000



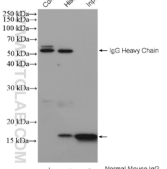
GAPDH 小鼠单抗 (货号: 60004-1-Ig)
WB: 1: 200000



6*His, His-Tag 小鼠单抗
(货号: 66005-1-Ig)

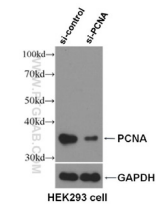
His-tagged fusion protein(20ng/lane) was subjected to SDS-PAGE followed by Western Blot with 66005-1-Ig at dilution of
Lane 1: 1:5000 Lane 4: 1:40000
Lane 2: 1:10000 Lane 5: 1:80000
Lane 3: 1:20000 Lane 6: 1:160000

免疫沉淀



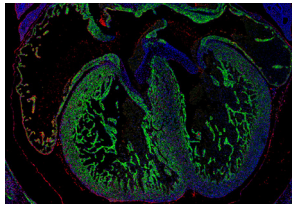
Histone H3 小鼠单抗
(货号: 68345-1-Ig)

抗体特异性验证



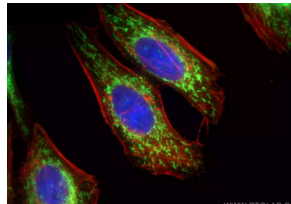
PCNA 兔多抗
(货号: 10205-2-AP)

免疫荧光



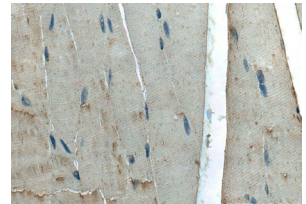
PCNA 兔多抗
(货号: 10205-2-AP)

免疫荧光



COXIV 兔多抗
(货号: 11242-1-AP)

免疫组化



VDAC1/Porin 小鼠单抗
(货号: 66345-1-Ig)



| 内参抗体 | | | | | | | |
|--------------|-------------|-------------|------------|--|---|------------------|--------|
| 适用范围 | 靶点名称 | 分子量 | 抗体类型 | 货号 | 应用 | WB 推荐稀释比 | SCI 文献 |
| 胞浆或全细胞 | GAPDH | 36 kDa | 重组兔单抗 | 81640-5-RR | WB, IF/ICC, ELISA | 1:5000-1:50000 | — |
| | | | 小鼠单抗 | 60004-1-Ig | WB, IP, IF/ICC, ELISA, IHC, CoIP | 1:50000-1:500000 | 10529 |
| | | | 兔多抗 | 10494-1-AP | WB, IP, IF/ICC, IHC, ELISA, RIP, CoIP, ChIP | 1:5000-1:40000 | 6335 |
| | β-Actin | 42 kDa | 重组兔单抗 | 81115-1-RR | WB, IF/ICC, IHC, ELISA | 1:5000-1:50000 | 367 |
| | | | 小鼠单抗 | 66009-1-Ig | WB, IP, IF/ICC, IHC, ELISA, CoIP, ChIP | 1:20000-1:100000 | 5831 |
| | | | 兔多抗 | 60008-1-Ig | WB, IHC, ELISA, IP, IF, CoIP | 1:5000-1:50000 | 3021 |
| | | | 小鼠单抗 | 20536-1-AP | WB, IF/ICC, IHC, ELISA, IP, CoIP | 1:4000-1:10000 | 3613 |
| | | | 兔多抗 | 80762-1-RR | WB, IF/ICC, IHC, ELISA | 1:5000-1:50000 | 4 |
| | | | 小鼠单抗 | 66031-1-Ig | WB, IP, IF/ICC, IHC, ELISA, CoIP | 1:20000-1:100000 | 940 |
| | α-Tubulin | 50-55 kDa | 重组兔单抗 | 11224-1-AP | WB, IP, IF/ICC, IHC, ELISA, CoIP | 1:3000-1:12000 | 1346 |
| | | | 兔多抗 | 80713-1-RR | WB, IP, IF/ICC, IHC, ELISA | 1:5000-1:50000 | 1 |
| | | | 小鼠单抗 | 66240-1-Ig | WB, IF/ICC, IHC, IP, ELISA | 1:20000-1:100000 | 347 |
| | | | 兔多抗 | 10068-1-AP | WB, IP, IF/ICC, IHC, ELISA | 1:5000-1:50000 | 360 |
| | | | 小鼠单抗 | 26520-1-AP | WB, IF/ICC, IHC, ELISA | 1:5000-1:50000 | 70 |
| | | | 兔多抗 | 66305-1-Ig | WB, IF, IHC, ELISA, CoIP | 1:5000-1:50000 | 137 |
| | β-Tubulin | 50-55 kDa | 重组兔单抗 | 81042-1-RR | WB, IF, IHC, ELISA | 1:20000-1:100000 | — |
| | | | 兔多抗 | 10298-1-AP | WB, IP, IF/ICC, IHC, ELISA | 1:5000-1:50000 | 205 |
| | | | 小鼠单抗 | 80906-1-RR | WB, IHC, IF/ICC, ELISA | 1:5000-1:50000 | 1 |
| 兔多抗 | | | 66095-1-Ig | WB, IP, IF/ICC, IF-P, IHC, ELISA, CoIP | 1:20000-1:100000 | 335 | |
| 小鼠单抗 | | | 12987-1-AP | WB, IP, IF/ICC, IF-P, IHC, ELISA, ChIP | 1:5000-1:50000 | 1041 | |
| 兔多抗 | | | 66166-1-Ig | WB, IP, IF/ICC, IHC, ELISA | 1:20000-1:100000 | 22 | |
| 细胞核 | TBP | 33-43 kDa * | 重组兔单抗 | 22006-1-AP | WB, IP, IF, IHC, ELISA | 1:500-1:3000 | 68 |
| | | | 兔多抗 | 81302-6-RR | WB, IF-P, FC (Intra), ELISA | 1:5000-1:50000 | — |
| | | | 小鼠单抗 | 60097-1-Ig | WB, IP, IF/ICC, IHC, ELISA | 1:5000-1:50000 | 127 |
| | PCNA | 36 kDa | 兔多抗 | 10205-2-AP | WB, IF/ICC, IF-P, IP, IHC, FC, CoIP, ELISA | 1:5000-1:50000 | 872 |
| | | | 重组兔单抗 | 82807-2-RR | WB, ELISA | 1:2000-1:10000 | — |
| | | | 兔多抗 | 17168-1-AP | WB, IP, IF/ICC, IHC, ELISA, CoIP, ChIP | 1:2000-1:16000 | 846 |
| | Histone-H3 | 15-17 kDa | 小鼠单抗 | 68345-1-Ig | WB, IP, IF/ICC, IHC, ELISA | 1:5000-1:50000 | 18 |
| | | | 兔多抗 | 82712-3-RR | WB, ELISA, IF/ICC | 1:1000-1:8000 | — |
| | | | 小鼠单抗 | 66281-1-Ig | WB, IP, IF/ICC, ELISA, RIP, IHC, CoIP, ChIP | 1:5000-1:50000 | 43 |
| | | | 兔多抗 | 22156-1-AP | WB, IP, IF/ICC, ELISA, IHC, CoIP, ChIP | 1:500-1:2000 | 33 |
| | | | 重组兔单抗 | 83191-6-RR | WB, IF, ELISA, FC (Intra) | 1:5000-1:50000 | — |
| | | | 兔多抗 | 14418-1-AP | WB, IP, IF/ICC, IHC, ELISA, CoIP | 1:5000-1:20000 | 180 |
| 膜蛋白 | ATP1A1 | 97-110 kDa | 兔多抗 | 55187-1-AP | WB, IF/ICC, IHC, ELISA | 1:1000-1:8000 | 13 |
| | | | 兔多抗 | 10866-1-AP | WB, IF/ICC, IF-P, ELISA, IHC, CoIP | 1:500-1:3000 | 154 |
| | | | 重组兔单抗 | 81538-1-RR | WB, IHC, IF-P, FC (Intra), ELISA | 1:2000-1:10000 | 1 |
| | VDAC1/2 | 31-37 kDa | 小鼠单抗 | 66345-1-Ig | WB, IF-P, IHC, ELISA, IP, CoIP | 1:5000-1:50000 | 26 |
| | | | 兔多抗 | 55259-1-AP | WB, IF-P, IHC, ELISA, PLA, CoIP | 1:1000-1:6000 | 138 |
| | | | 重组兔单抗 | 82916-1-RR | WB, IF/ICC, FC (Intra), ELISA | 1:5000-1:50000 | — |
| COX4I1 | 17-20 kDa | 小鼠单抗 | 66110-1-Ig | WB, IF/ICC, IHC, ELISA | 1:5000-1:50000 | 25 | |
| | | 兔多抗 | 11242-1-AP | WB, IP, IF/ICC, IHC, ELISA, ChIP | 1:5000-1:20000 | 399 | |
| | | 重组兔单抗 | 81676-1-RR | WB, IHC, ELISA | 1:5000-1:50000 | — | |
| 全血 / 血浆 / 血清 | Transferrin | 77 kDa | 小鼠单抗 | 66171-1-Ig | WB, IF-P, IHC, ELISA | 1:5000-1:50000 | 4 |
| | | | 兔多抗 | 17435-1-AP | WB, IP, IF/ICC, IHC, ELISA | 1:1000-1:5000 | 56 |
| | | | 重组兔单抗 | 82783-6-RR | WB, IF/ICC, IF-P, ELISA | 1:20000-1:100000 | — |
| | Albumin | 66 kDa | 小鼠单抗 | 66051-1-Ig | WB, IP, IF/ICC, IHC, ELISA | 1:5000-1:50000 | 34 |
| | | | 兔多抗 | 16475-1-AP | WB, IP, IF/ICC, IF-P, IHC, ELISA, CoIP | 1:5000-1:50000 | 131 |
| | | | 兔多抗 | 81676-1-RR | WB, IHC, ELISA | 1:5000-1:50000 | — |

*TBP 在人类是 37-43 kDa, 在小鼠和大鼠中是 33-36 kDa

| 标签抗体 | | | | | | |
|--|-------|------------|--|------------------|--------|--|
| 靶点名称 | 类型 | 货号 | 应用 | WB 推荐稀释比 | SCI 文献 | |
| 6*His, His-Tag | 小鼠单抗 | 66005-1-Ig | WB, IP, IF, IHC, CoIP, ChIP, ELISA | 1:5000-1:50000 | 846 | |
| | 兔多抗 | 10001-0-AP | WB, IP, IF, IHC, ChIP, ELISA | 1:500-1:2000 | 70 | |
| DYKDDDDK Tag (Binds to FLAG® tag epitope) | 重组兔单抗 | 80801-2-RR | WB, IF/ICC, IP, ELISA | 1:5000-1:50000 | — | |
| | 小鼠单抗 | 66008-4-Ig | WB, IP, IF/ICC, ELISA, RIP, IHC, CoIP, ChIP | 1:5000-1:50000 | 230 | |
| | 兔多抗 | 20543-1-AP | WB, IP, IF, RIP, IHC, CoIP, ChIP, ELISA | 1:20000-1:100000 | 915 | |
| GFP Tag | 小鼠单抗 | 66002-1-Ig | WB, IP, IF/ICC, RIP, IHC, CoIP, ChIP, ELISA | 1:20000-1:100000 | 446 | |
| | 兔多抗 | 50430-2-AP | WB, IP, IF/ICC, ELISA, RIP, IHC, CoIP, ChIP, IP-MS | 1:1000-1:4000 | 628 | |
| GST Tag | 重组兔单抗 | 80006-1-RR | WB, ELISA, CoIP | 1:5000-1:50000 | 1 | |
| | 小鼠单抗 | 66001-2-Ig | WB, IP, IF, CoIP, ELISA | 1:5000-1:50000 | 110 | |
| | 兔多抗 | 10000-0-AP | WB, IP, IF, CoIP, ChIP, ELISA | 1:1000-1:4000 | 206 | |
| HA Tag | 重组兔单抗 | 81290-1-RR | WB, IP, IF/ICC, ELISA, CoIP | 1:5000-1:50000 | 16 | |
| | 小鼠单抗 | 66006-2-Ig | WB, IP, IF/ICC, PLA, CoIP, ChIP, ELISA | 1:10000-1:100000 | 206 | |
| | 兔多抗 | 51064-2-AP | WB, IP, IF, IHC, CoIP, ChIP, ELISA | 1:5000-1:10000 | 738 | |
| MYC Tag | 小鼠单抗 | 60003-2-Ig | WB, IP, IF, CoIP, ChIP, ELISA | 1:2000-1:10000 | 219 | |
| | 兔多抗 | 16286-1-AP | WB, IP, IF, IHC, CoIP, ELISA | 1:1000-1:8000 | 337 | |
| MBP Tag | 小鼠单抗 | 66003-1-Ig | WB, IP, IF, IHC, CoIP, ELISA | 1:1000-1:8000 | 46 | |
| | 兔多抗 | 15089-1-AP | WB, IP, IF, IHC, CoIP, ELISA | 1:1000-1:6000 | 27 | |
| mCherry | 小鼠单抗 | 68088-1-Ig | WB, IF/ICC, ELISA, IP | 1:2000-1:10000 | 1 | |
| mNeonGreen | 兔多抗 | 26765-1-AP | WB, IHC, IP, CoIP, IF, ELISA | 1:1000-1:4000 | 68 | |
| | 小鼠单抗 | 32f6 * | IF, ELISA | — | 102 | |
| RFP | 小鼠单抗 | 67378-1-Ig | WB, IF, ELISA | 1:5000-1:100000 | 6 | |
| | 兔多抗 | 6g6 * | WB | 1:2000 | 170 | |
| S1 Tag | 小鼠单抗 | 66165-1-Ig | WB, ELISA | 1:5000-1:50000 | — | |
| V5 Tag | 兔多抗 | 14440-1-AP | WB, IP, IF, RIP, ChIP, ELISA | 1:2000-1:20000 | 46 | |
| Halo | 小鼠单抗 | 28a8 * | WB | 1:500 | 3 | |
| TurboGFP | 纳米抗体 | tbfrb * | IF | — | — | |
| | 纳米抗体 | tbfrms * | IF | — | — | |
| Spot | 小鼠单抗 | 28a5 * | WB, ELISA | 1:1000-1:5000 | 3 | |
| SNAP/CLIP | 小鼠单抗 | 6f9 * | WB | 1:1000 | 1 | |

* 标记是子品牌 Chromotek 系列产品

高品质抗体与新型染料强强联合

Proteintech 还可提供 HRP、Biotin 标记以及 CoraLite® 系列等荧光染料标记的内参标签抗体, 适用各种实验类型。

其中 CoraLite® 及 CoraLite® Plus 系列是 Proteintech 公司引入的新型荧光染料。这两种染料具有相同的激发 / 发射波长, 在光谱上与 Alexa Fluor® 染料相似, 但相比传统染料更稳定。