

# ELAC2 Polyclonal antibody

Catalog Number: 10071-1-AP

Featured Product

9 Publications

## Basic Information

## Catalog Number:

10071-1-AP

## Size:

280 µg/ml

## Source:

Rabbit

## Isotype:

IgG

## Immunogen Catalog Number:

AG0105

## GenBank Accession Number:

BC004158

## GeneID (NCBI):

60528

## UNIPROT ID:

Q9BQ52

## Full Name:

elaC homolog 2 (E. coli)

## Calculated MW:

92 kDa

## Observed MW:

92 kDa

## Purification Method:

Antigen affinity purification

## Recommended Dilutions:

WB 1:200-1:1000

IHC 1:50-1:500

## Applications

## Tested Applications:

IHC, WB, ELISA

## Cited Applications:

IF, WB

## Species Specificity:

human, mouse, rat

## Cited Species:

human, mouse

**Note-IHC: suggested antigen retrieval with TE buffer pH 9.0; (\*) Alternatively, antigen retrieval may be performed with citrate buffer pH 6.0**

## Positive Controls:

WB : DU 145 cells, HeLa cells, HepG2 cells

IHC : mouse testis tissue,

## Background Information

Putative prostate cancer susceptibility protein (ELAC2) is encoded by HPC2/ELAC2 gene. HPC2 is a potential prostate cancer predisposition gene playing a role in genetic susceptibility to prostate cancer. It is a zinc phosphodiesterase, which displays some tRNA 3'-processing endonuclease activity and probably involved in tRNA maturation, by removing a 3'-trailer from precursor tRNA. Defects in ELAC2 may be a cause of susceptibility to prostate cancer (PC).

## Notable Publications

Author	Pubmed ID	Journal	Application
Mineri Rossana R	19492094	PLoS One	WB
Zbigniew Pietras	29967381	Nat Commun	WB
Brzezniak Lien K LK	21593607	RNA Biol	WB, IF

## Storage

## Storage:

Store at -20°C. Stable for one year after shipment.

## Storage Buffer:

PBS with 0.02% sodium azide and 50% glycerol pH 7.3.

Aliquoting is unnecessary for -20°C storage

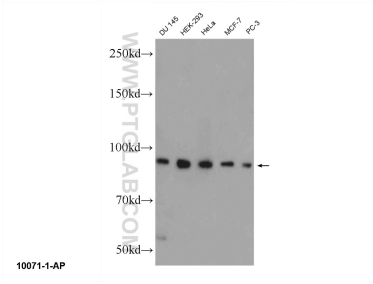
For technical support and original validation data for this product please contact:

T: 4006900926

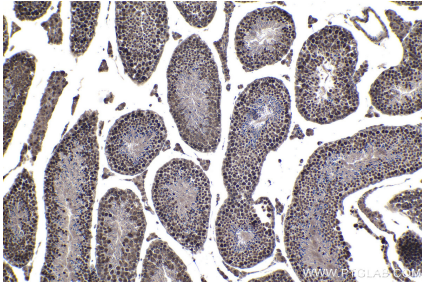
E: [Proteintech-CN@ptglab.com](mailto:Proteintech-CN@ptglab.com)W: [ptgcn.com](http://ptgcn.com)

This product is exclusively available under Proteintech Group brand and is not available to purchase from any other manufacturer.

# Selected Validation Data



DU 145 cells were subjected to SDS PAGE followed by western blot with 10071-1-AP (ELAC2 Antibody) at dilution of 1:300 incubated at room temperature for 1.5 hours.



Immunohistochemical analysis of paraffin-embedded mouse testis tissue slide using 10071-1-AP (ELAC2 antibody) at dilution of 1:200 (under 10x lens). Heat mediated antigen retrieval with Tris-EDTA buffer (pH 9.0).