

# CPNE1 Polyclonal antibody

Catalog Number: 10126-2-AP

Featured Product

5 Publications

## Basic Information

**Catalog Number:**

10126-2-AP

**Size:**

400 µg/ml

**Source:**

Rabbit

**Isotype:**

IgG

**Immunogen Catalog Number:**

AG0139

**GenBank Accession Number:**

BC001142

**GeneID (NCBI):**

8904

**UNIPROT ID:**

Q99829

**Full Name:**

copine I

**Calculated MW:**

59 kDa

**Observed MW:**

59 kDa

**Purification Method:**

Antigen affinity purification

**Recommended Dilutions:**

WB 1:500-1:2000

IHC 1:50-1:500

## Applications

**Tested Applications:**

WB, ELISA

**Cited Applications:**

WB, IHC

**Species Specificity:**

human

**Cited Species:**

human

**Note-IHC: suggested antigen retrieval with TE buffer pH 9.0; (\*) Alternatively, antigen retrieval may be performed with citrate buffer pH 6.0**

**Positive Controls:**

WB : A431 cells, HEK-293T cells

IHC : human breast cancer tissue,

## Background Information

Copines are a family of evolutionarily conserved calcium-dependent phospholipid-binding proteins (PMID: 9430674). They contain two Ca(2+)- and phospholipid-binding domains known as C2 domains. Copines are potentially involved in regulating membrane trafficking and in protein-protein interactions.

## Notable Publications

Author	Pubmed ID	Journal	Application
Yang Wang	34977878	MedComm (2020)	WB
C Heinrich	20010870	Oncogene	WB
Yelin Song	38062811	Front Biosci (Landmark Ed)	WB

## Storage

**Storage:**

Store at -20°C. Stable for one year after shipment.

**Storage Buffer:**

PBS with 0.02% sodium azide and 50% glycerol pH 7.3.

Aliquoting is unnecessary for -20°C storage

For technical support and original validation data for this product please contact:

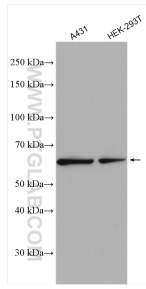
T: 4006900926

E: Proteintech-CN@ptglab.com

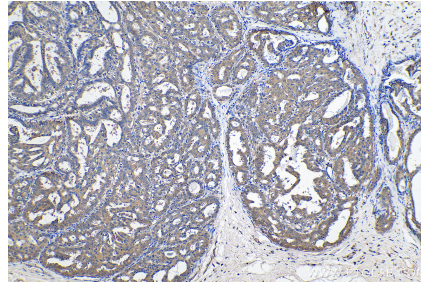
W: ptgcn.com

**This product is exclusively available under Proteintech Group brand and is not available to purchase from any other manufacturer.**

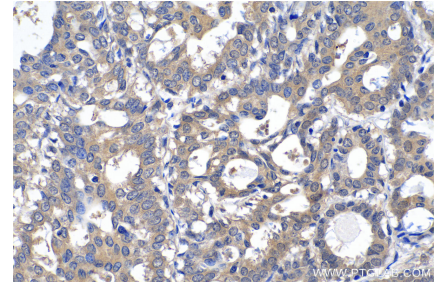
## Selected Validation Data



Various lysates were subjected to SDS PAGE followed by western blot with 10126-2-AP (CPNE1 antibody) at dilution of 1:1000 incubated at room temperature for 1.5 hours.



Immunohistochemical analysis of paraffin-embedded human breast cancer tissue slide using 10126-2-AP (CPNE1 antibody) at dilution of 1:200 (under 10x lens).



Immunohistochemical analysis of paraffin-embedded human breast cancer tissue slide using 10126-2-AP (CPNE1 antibody) at dilution of 1:200 (under 40x lens).