

For Research Use Only

PEF1 Polyclonal antibody

Catalog Number: 10151-1-AP **1 Publications**



Basic Information

Catalog Number:

10151-1-AP

Size:

500 µg/ml

Source:

Rabbit

Isotype:

IgG

Immunogen Catalog Number:

AG0198

GenBank Accession Number:

BC002773

GeneID (NCBI):

553115

UNIPROT ID:

Q9UBV8

Full Name:

penta-EF-hand domain containing 1

Calculated MW:

30 kDa

Observed MW:

30 kDa

Purification Method:

Antigen affinity purification

Recommended Dilutions:

WB 1:1000-1:6000

IP 0.5-4.0 µg for 1.0-3.0 mg of total protein lysate

Applications

Tested Applications:

IP, WB, ELISA

Cited Applications:

WB, IF

Species Specificity:

human

Cited Species:

human

Positive Controls:

WB : HEK-293 cells, Jurkat cells, HeLa cells

IP : HEK-293 cells,

Background Information

Notable Publications

Author	Pubmed ID	Journal	Application
Yang Xiaoli X	20000738	J Proteome Res	WB,IF

Storage

Storage:

Store at -20°C. Stable for one year after shipment.

Storage Buffer:

PBS with 0.02% sodium azide and 50% glycerol pH 7.3.

Aliquoting is unnecessary for -20°C storage

For technical support and original validation data for this product please contact:

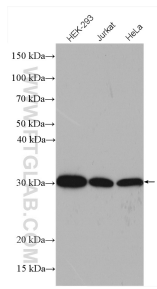
T: 4006900926

E: Proteintech-CN@ptglab.com

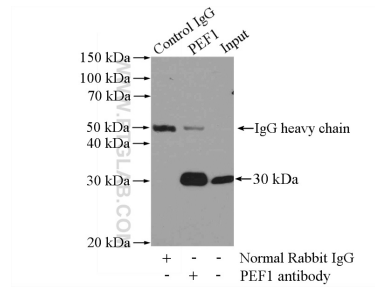
W: ptgcn.com

This product is exclusively available under Proteintech Group brand and is not available to purchase from any other manufacturer.

Selected Validation Data



Various lysates were subjected to SDS PAGE followed by western blot with 10151-1-AP (PEF1 antibody) at dilution of 1:3000 incubated at room temperature for 1.5 hours.



IP result of anti-PEF1 (IP:10151-1-AP, 4ug; Detection:10151-1-AP 1:500) with HEK-293 cells lysate 3200ug.