

For Research Use Only

MCHR1 Polyclonal antibody

Catalog Number: 10163-1-AP **1 Publications**



Basic Information

Catalog Number: 10163-1-AP	GenBank Accession Number: BC001736	Purification Method: Antigen affinity purification
Size: 600 µg/ml	GeneID (NCBI): 2847	Recommended Dilutions: WB 1:500-1:2000 IHC 1:20-1:200
Source: Rabbit	UNIPROT ID: Q99705	
Isotype: IgG	Full Name: melanin-concentrating hormone receptor 1	
Immunogen Catalog Number: AG0177	Calculated MW: 46-50 kDa	
	Observed MW: 46 kDa, 35 kDa	

Applications

Tested Applications: IHC, WB, ELISA	Positive Controls:
Cited Applications: WB	WB : Human anterior cingulate, IHC : human heart tissue,
Species Specificity: human	
Cited Species: human	
Note-IHC: suggested antigen retrieval with TE buffer pH 9.0; (*) Alternatively, antigen retrieval may be performed with citrate buffer pH 6.0	

Background Information

Notable Publications

Author	Pubmed ID	Journal	Application
Jun Tian	34745423	Oxid Med Cell Longev	WB

Storage

Storage:
Store at -20°C. Stable for one year after shipment.
Storage Buffer:
PBS with 0.02% sodium azide and 50% glycerol pH 7.3.
Aliquoting is unnecessary for -20°C storage

For technical support and original validation data for this product please contact:

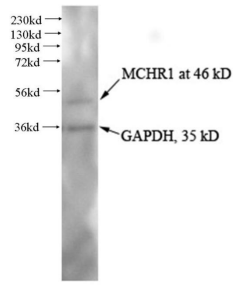
T: 4006900926

E: Proteintech-CN@ptglab.com

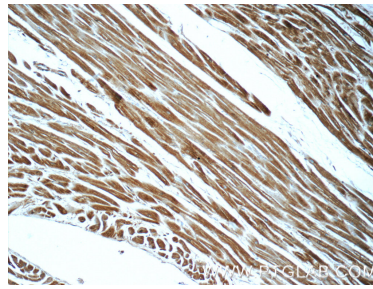
W: ptgcn.com

This product is exclusively available under Proteintech Group brand and is not available to purchase from any other manufacturer.

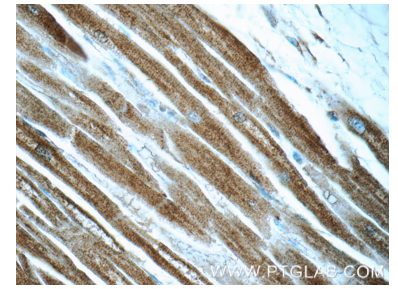
Selected Validation Data



Human anterior cingulate tissue were subjected to SDS PAGE followed by western blot with 10163-1-AP (MCHR1 antibody) at dilution of 1:1000.



Immunohistochemical analysis of paraffin-embedded human heart tissue slide using 10163-1-AP (MCHR1 Antibody) at dilution of 1:50 (under 10x lens).



Immunohistochemical analysis of paraffin-embedded human heart tissue slide using 10163-1-AP (MCHR1 Antibody) at dilution of 1:50 (under 40x lens).