

For Research Use Only

WTAP Polyclonal antibody, PBS Only

Catalog Number: 10200-1-PBS

Featured Product



Basic Information

Catalog Number:

10200-1-PBS

Size:

1 mg/ml

Source:

Rabbit

Isotype:

IgG

Immunogen Catalog Number:

AG0259

GenBank Accession Number:

BC000383

GeneID (NCBI):

9589

UNIPROT ID:

Q15007

Full Name:

Wilms tumor 1 associated protein

Calculated MW:

45 kDa

Observed MW:

50-55 kDa

Purification Method:

Antigen affinity purification

Applications

Tested Applications:

WB, IHC, IP, Indirect ELISA

Species Specificity:

human, mouse, rat

Background Information

WTAP, also named as KIAA0105 and hFL(2)D, is previously identified as a protein associated with Wilms' tumor-1 (WT-1) protein that is essential for the development of the genitourinary system. It is a Pre-mRNA-splicing regulator protein. It is a regulatory subunit of the WMM N6-methyltransferase complex which plays a role in the efficiency of mRNA splicing and processing and mRNA stability. It is required for accumulation of METTL3 and METTL14 to nuclear speckle. MW of WTAP is 50-55 kDa due to phosphorylation.

Storage

Storage:

Store at -80°C.

The product is shipped with ice packs. Upon receipt, store it immediately at -80°C

Storage Buffer:

PBS Only

For technical support and original validation data for this product please contact:

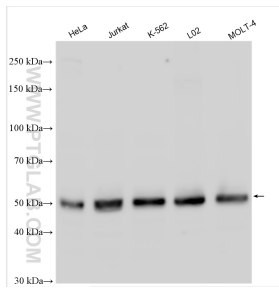
T: 4006900926

E: Proteintech-CN@ptglab.com

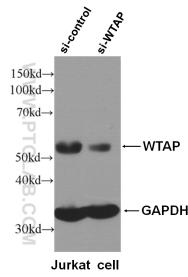
W: ptgcn.com

This product is exclusively available under Proteintech Group brand and is not available to purchase from any other manufacturer.

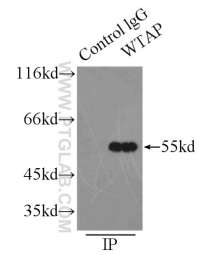
Selected Validation Data



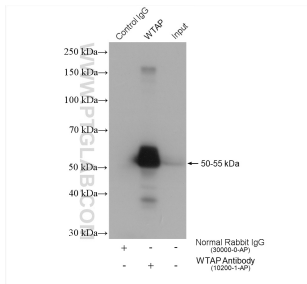
HeLa cells were subjected to SDS PAGE followed by western blot with 10200-1-AP (WTAP antibody) at dilution of 1:8000 incubated at room temperature for 1.5 hours. This data was developed using the same antibody clone with 10200-1-PBS in a different storage buffer formulation.



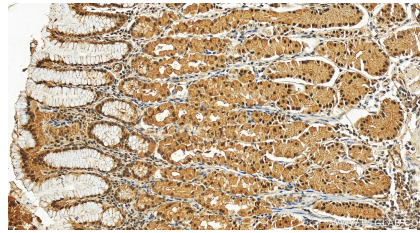
WB result of WTAP specific antibody (10200-1-AP, 1:6000) with si-control and si-WTAP transfected Jurkat cells. This data was developed using the same antibody clone with 10200-1-PBS in a different storage buffer formulation.



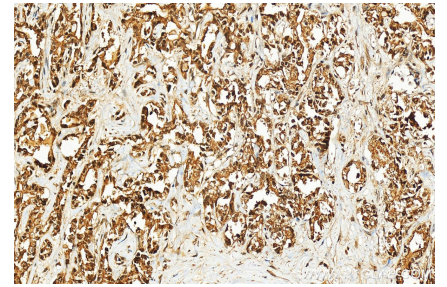
IP result of anti-WTAP (IP:10200-1-AP, 3ug; Detection:10200-1-AP 1:500) with HEK-293 cells lysate 2500ug. This data was developed using the same antibody clone with 10200-1-PBS in a different storage buffer formulation.



IP result of anti-WTAP (IP:10200-1-AP, 4ug; Detection:10200-1-AP 1:8000) with Jurkat cells lysate 2280 ug. This data was developed using the same antibody clone with 10200-1-PBS in a different storage buffer formulation.



Immunohistochemical analysis of paraffin-embedded human stomach tissue slide using 10200-1-AP (WTAP antibody) at dilution of 1:800 (under 20x lens). Heat mediated antigen retrieval with Tris-EDTA buffer (pH 9.0). This data was developed using the same antibody clone with 10200-1-PBS in a different storage buffer formulation.



Immunohistochemical analysis of paraffin-embedded human intrahepatic cholangiocarcinoma tissue slide using 10200-1-AP (WTAP antibody) at dilution of 1:1000 (under 20x lens). Heat mediated antigen retrieval with Tris-EDTA buffer (pH 9.0). This data was developed using the same antibody clone with 10200-1-PBS in a different storage buffer formulation.