

For Research Use Only

MTCP1NB Polyclonal antibody

Catalog Number: 10235-1-AP



Basic Information

Catalog Number:

10235-1-AP

Size:

500 µg/ml

Source:

Rabbit

Isotype:

IgG

Immunogen Catalog Number:

AG0338

GenBank Accession Number:

BC002600

GeneID (NCBI):

100272147

UNIPROT ID:

P56277

Full Name:

mature T-cell proliferation 1 neighbor

Calculated MW:

13 kDa, 8 kDa

Observed MW:

8 kDa

Purification Method:

Antigen affinity purification

Recommended Dilutions:

IP 0.5-4.0 µg for 1.0-3.0 mg of total protein lysate

IF/ICC 1:200-1:800

Applications

Tested Applications:

IF/ICC, IP, ELISA

Species Specificity:

human, mouse

Positive Controls:

IP: HEK-293T cells,

IF/ICC: U2OS cells,

Background Information

MTCP1NB, also named as C6.1B, MTCP1, MTCP1B, is a member of the CMC4 protein family. MTCP1NB is 8 kDa protein that localizes to mitochondria. MTCP1NB was identified by involvement in some t(χ;14) translocations associated with mature T-cell proliferations(NCBI).

Storage

Storage:

Store at -20°C. Stable for one year after shipment.

Storage Buffer:

PBS with 0.02% sodium azide and 50% glycerol pH 7.3.

Aliquoting is unnecessary for -20°C storage

For technical support and original validation data for this product please contact:

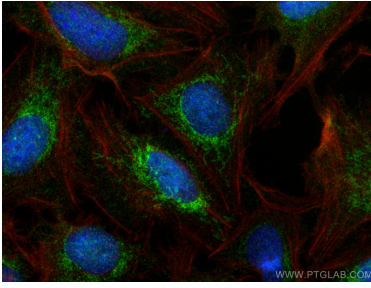
T: 4006900926

E: Proteintech-CN@ptglab.com

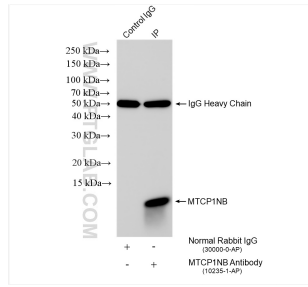
W: ptgcn.com

This product is exclusively available under Proteintech Group brand and is not available to purchase from any other manufacturer.

Selected Validation Data



Immunofluorescent analysis of (4% PFA) fixed U2OS cells using MTCP1NB antibody (10235-1-AP) at dilution of 1:400 and CoraLite®488-Conjugated AffiniPure Goat Anti-Rabbit IgG(H+L) (SA00013-2), CL594-Phalloidin (red).



IP result of anti-MTCP1NB (IP:10235-1-AP, 4ug; Detection:10235-1-AP 1:300) with HEK-293T cells lysate 1320 ug.