

For Research Use Only

# MAPRE2 Polyclonal antibody

Catalog Number: 10364-1-AP

Featured Product

2 Publications



## Basic Information

**Catalog Number:**

10364-1-AP

**Size:**

300 µg/ml

**Source:**

Rabbit

**Isotype:**

IgG

**Immunogen Catalog Number:**

AG0416

**GenBank Accession Number:**

BC007318

**GeneID (NCBI):**

10982

**UNIPROT ID:**

Q15555

**Full Name:**

microtubule-associated protein,  
RP/EB family, member 2

**Calculated MW:**

37 kDa

**Observed MW:**

39-42 kDa

**Purification Method:**

Antigen affinity purification

**Recommended Dilutions:**

WB 1:500-1:2000

IF 1:50-1:500

## Applications

**Tested Applications:**

IF, WB, ELISA

**Cited Applications:**

WB

**Species Specificity:**

human, mouse

**Cited Species:**

mouse

**Positive Controls:**

WB : K-562 cells, Jurkat cells

IF : mouse cells,

## Background Information

RP1 protein shares significant homology to the adenomatous polyposis coli (APC) protein-binding EB1 gene family and binds specifically to the C-terminal region of the APC protein. RP1 also binds directly to tubulin, both in vitro and in vivo. The function of RP1 is currently unknown; however, its homology suggests involvement in tumorigenesis of colorectal cancers and proliferative control of normal cells. It may belong to the intermediate/early gene family, involved in the signal transduction cascade downstream of the TCR.

## Notable Publications

Author	Pubmed ID	Journal	Application
Odetta Antico	34767452	Sci Adv	WB
Yuan-Yuan Li	35398309	Exp Cell Res	WB

## Storage

**Storage:**

Store at -20°C. Stable for one year after shipment.

**Storage Buffer:**

PBS with 0.02% sodium azide and 50% glycerol pH 7.3.

Aliquoting is unnecessary for -20°C storage

For technical support and original validation data for this product please contact:

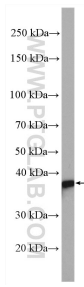
T: 4006900926

E: Proteintech-CN@ptglab.com

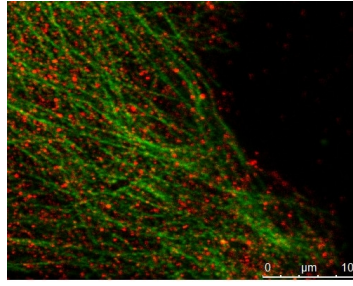
W: ptgcn.com

This product is exclusively available under Proteintech Group brand and is not available to purchase from any other manufacturer.

## Selected Validation Data



K-562 cells were subjected to SDS PAGE followed by western blot with 10364-1-AP (MAPRE2 antibody) at dilution of 1:1000 incubated at room temperature for 1.5 hours.



Mouse keratinocyte showing MAPRE2 ( #10364-1-AP, 1:100 dilution, with Alexa 594 labelled 2nd Ab) in red and alpha-tubulin ( #66031-1-Ig, 1:100 dilution, with Alexa 488 labelled 2nd Ab ) in green.