

For Research Use Only

# UGP2 Polyclonal antibody

Catalog Number: 10391-1-AP

Featured Product

4 Publications



## Basic Information

**Catalog Number:**

10391-1-AP

**Size:**

300 µg/ml

**Source:**

Rabbit

**Isotype:**

IgG

**Immunogen Catalog Number:**

AG0590

**GenBank Accession Number:**

BC002954

**GeneID (NCBI):**

7360

**UNIPROT ID:**

Q16851

**Full Name:**

UDP-glucose pyrophosphorylase 2

**Calculated MW:**

56 kDa

**Observed MW:**

50-56 kDa

**Purification Method:**

Antigen affinity purification

**Recommended Dilutions:**

WB 1:500-1:1000

IHC 1:20-1:200

## Applications

**Tested Applications:**

IHC, WB, ELISA

**Cited Applications:**

WB, IHC

**Species Specificity:**

human, mouse, rat

**Cited Species:**

human, rat

**Note-IHC: suggested antigen retrieval with TE buffer pH 9.0; (\*) Alternatively, antigen retrieval may be performed with citrate buffer pH 6.0**

**Positive Controls:**

**WB:** HepG2 cells, mouse liver tissue, HeLa cells, HEK-293 cells, rat liver tissue

**IHC:** human ovary tumor tissue, human liver cancer tissue

## Background Information

UDP-glucose pyrophosphorylase 2 (UGP2, synonyms: UDPG, UGPP2, UDPGP2, Phc379) is an important intermediary in mammalian carbohydrate interconversions. It transfers a glucose moiety from glucose-1-phosphate to MgUTP and forms UDP-glucose and MgPPi. In liver and muscle tissue, UDP-glucose is a direct precursor of glycogen; in lactating mammary gland it is converted to UDP-galactose which is then converted to lactose. So far two isoforms are encoded by two transcript variants have been found.

## Notable Publications

Author	Pubmed ID	Journal	Application
Qiyue Hu	32733617	Dis Markers	IHC
Chun Zeng	30816613	J Cell Biochem	WB
Dong-Xue Ding	35281731	iScience	WB

## Storage

**Storage:**

Store at -20°C. Stable for one year after shipment.

**Storage Buffer:**

PBS with 0.02% sodium azide and 50% glycerol pH 7.3.

Aliquoting is unnecessary for -20°C storage

For technical support and original validation data for this product please contact:

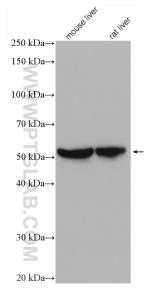
T: 4006900926

E: Proteintech-CN@ptglab.com

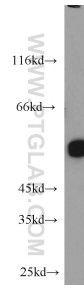
W: ptgcn.com

**This product is exclusively available under Proteintech Group brand and is not available to purchase from any other manufacturer.**

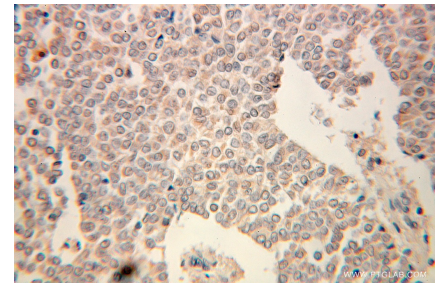
## Selected Validation Data



Various lysates were subjected to SDS PAGE followed by western blot with 10391-1-AP (UGP2 antibody) at dilution of 1:2000 incubated at room temperature for 1.5 hours.



HepG2 cells were subjected to SDS PAGE followed by western blot with 10391-1-AP (UGP2 antibody) at dilution of 1:500 incubated at room temperature for 1.5 hours.



Immunohistochemical analysis of paraffin-embedded human ovary tumor using 10391-1-AP (UGP2 antibody) at dilution of 1:100 (under 25x lens).