

For Research Use Only

# SLC43A1 Polyclonal antibody

Catalog Number: 10444-1-AP

1 Publications



## Basic Information

<b>Catalog Number:</b> 10444-1-AP	<b>GenBank Accession Number:</b> BC001639	<b>Purification Method:</b> Antigen affinity purification
<b>Size:</b> 750 µg/ml	<b>GeneID (NCBI):</b> 8501	<b>Recommended Dilutions:</b> WB 1:500-1:1000 IHC 1:50-1:500
<b>Source:</b> Rabbit	<b>UNIPROT ID:</b> O75387	
<b>Isotype:</b> IgG	<b>Full Name:</b> solute carrier family 43, member 1	
<b>Immunogen Catalog Number:</b> AG0305	<b>Calculated MW:</b> 61 kDa	
	<b>Observed MW:</b> 55-61 kDa	

## Applications

<b>Tested Applications:</b> IHC, WB, ELISA	<b>Positive Controls:</b> WB : PC-3 cells, Daudi cells IHC : human kidney tissue,
<b>Cited Applications:</b> WB	
<b>Species Specificity:</b> human	
<b>Cited Species:</b> human	

**Note-IHC: suggested antigen retrieval with TE buffer pH 9.0; (\*) Alternatively, antigen retrieval may be performed with citrate buffer pH 6.0**

## Background Information

SLC43A1, also named as LAT3, PB39 and POV1, belongs to the system L family of plasma membrane carrier proteins that transports large neutral amino acids. It plays a role in the development of human prostate cancer, from prostatic intraepithelial neoplasia to invasive prostate cancer.

## Notable Publications

Author	Pubmed ID	Journal	Application
Riho Kimura	39067558	Arch Biochem Biophys	WB

## Storage

**Storage:**  
Store at -20°C. Stable for one year after shipment.  
**Storage Buffer:**  
PBS with 0.02% sodium azide and 50% glycerol pH 7.3.  
Aliquoting is unnecessary for -20°C storage

For technical support and original validation data for this product please contact:

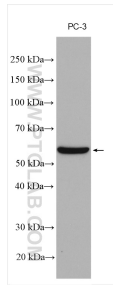
T: 4006900926

E: [Proteintech-CN@ptglab.com](mailto:Proteintech-CN@ptglab.com)

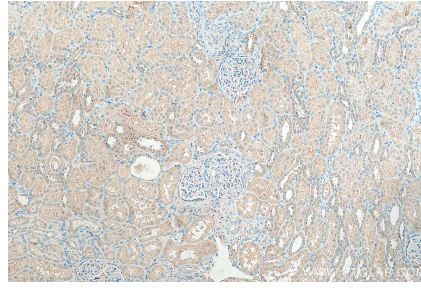
W: [ptgcn.com](http://ptgcn.com)

**This product is exclusively available under Proteintech Group brand and is not available to purchase from any other manufacturer.**

## Selected Validation Data



PC-3 cells were subjected to SDS PAGE followed by western blot with 10444-1-AP (SLC43A1 antibody) at dilution of 1:500 incubated at room temperature for 1.5 hours.



Immunohistochemical analysis of paraffin-embedded human kidney tissue slide using 10444-1-AP (SLC43A1 antibody) at dilution of 1:100 (under 10x lens). Heat mediated antigen retrieval with Tris-EDTA buffer (pH 9.0).

Various lysates were subjected to SDS PAGE followed by western blot with 10444-1-AP (SLC43A1 antibody) at dilution of 1:400 incubated at room temperature for 1.5 hours.