

For Research Use Only

# PPP1R2 Polyclonal antibody, PBS Only

Catalog Number:10516-1-PBS



## Basic Information

<b>Catalog Number:</b> 10516-1-PBS	<b>GenBank Accession Number:</b> BC007655	<b>Purification Method:</b> Antigen affinity purification
<b>Size:</b> 1 mg/ml	<b>GeneID (NCBI):</b> 5504	
<b>Source:</b> Rabbit	<b>UNIPROT ID:</b> P41236	
<b>Isotype:</b> IgG	<b>Full Name:</b> protein phosphatase 1, regulatory (inhibitor) subunit 2	
<b>Immunogen Catalog Number:</b> AG0805	<b>Calculated MW:</b> 23 kDa	
	<b>Observed MW:</b> 23-30 kDa	

## Applications

**Tested Applications:**  
WB, Indirect ELISA

**Species Specificity:**  
human, mouse, rat

## Background Information

PPP1R2 (PHOSPHATASE INHIBITOR 2) forms heterodimer with phosphatase type-1 (PP1). Activity of the complex can be regulated by a series of phosphorylations/ phosphorilations events on PPP1R2, functioning in some important process in vivo.

## Storage

**Storage:**  
Store at -80°C.  
**The product is shipped with ice packs. Upon receipt, store it immediately at -80°C**

**Storage Buffer:**  
PBS Only

For technical support and original validation data for this product please contact:

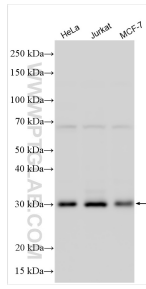
T: 4006900926

E: [Proteintech-CN@ptglab.com](mailto:Proteintech-CN@ptglab.com)

W: [ptgcn.com](http://ptgcn.com)

**This product is exclusively available under Proteintech Group brand and is not available to purchase from any other manufacturer.**

## Selected Validation Data



HeLa cells were subjected to SDS PAGE followed by western blot with 10516-1-AP (PPP1R2 antibody) at dilution of 1:2000 incubated at room temperature for 1.5 hours. This data was developed using the same antibody clone with 10516-1-PBS in a different storage buffer formulation.