

For Research Use Only

# PACSIN2 Polyclonal antibody

Catalog Number: 10518-2-AP

Featured Product

8 Publications



## Basic Information

**Catalog Number:**

10518-2-AP

**Size:**

400 ug/ml

**Source:**

Rabbit

**Isotype:**

IgG

**Immunogen Catalog Number:**

AG0809

**GenBank Accession Number:**

BC008037

**GeneID (NCBI):**

11252

**UNIPROT ID:**

Q9UNF0

**Full Name:**

protein kinase C and casein kinase substrate in neurons 2

**Calculated MW:**

56 kDa

**Observed MW:**

60-65 kDa

**Purification Method:**

Antigen affinity purification

**Recommended Dilutions:**

WB 1:500-1:2000

IP 0.5-4.0 ug for 1.0-3.0 mg of total protein lysate

IHC 1:200-1:800

IF/ICC 1:50-1:500

## Applications

**Tested Applications:**

WB, IHC, IF/ICC, IP, ELISA

**Cited Applications:**

WB, IF

**Species Specificity:**

human, mouse

**Cited Species:**

human, mouse, zebrafish

**Positive Controls:**

**WB:** HEK-293 cells, mouse heart tissue, mouse lung tissue, NIH/3T3 cells, HepG2 cells

**IP:** NIH/3T3 cells,

**IHC:** human breast cancer tissue, human skin tissue

**IF/ICC:** NIH/3T3 cells,

**Note-IHC: suggested antigen retrieval with TE buffer pH 9.0; (\*) Alternatively, antigen retrieval may be performed with citrate buffer pH 6.0**

## Background Information

Peripheral membrane proteins of the Bin/amphiphysin/Rvs (BAR) and Fer-CIP4 homology-BAR (F-BAR) family participate in cellular membrane trafficking (PMID: 19549836). PACSIN2 (also known as syndapin-2) is a member of the protein kinase C and casein kinase substrate in neurons (PACSIN) family, which are membrane-binding proteins characterized by an amino-terminal F-BAR domain. PACSIN2 plays a role in intracellular vesicle-mediated transport. It is involved in the endocytosis of cell-surface receptors like the EGF receptor, contributing to its internalization (PMID: 23129763). PACSIN2 also has a role in caveolae membrane sculpting (PMID: 21610094).

## Notable Publications

Author	Pubmed ID	Journal	Application
Simone Laura C LC	24040268	PLoS One	WB
X Liu	36267015	J Dent Res	WB
Claudia Matthaeus	36433988	Nat Commun	WB,IF

## Storage

**Storage:**

Store at -20°C. Stable for one year after shipment.

**Storage Buffer:**

PBS with 0.02% sodium azide and 50% glycerol pH 7.3.

Aliquoting is unnecessary for -20°C storage

For technical support and original validation data for this product please contact:

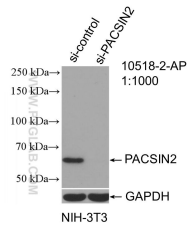
T: 4006900926

E: Proteintech-CN@ptglab.com

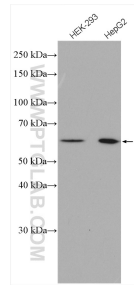
W: ptgcn.com

**This product is exclusively available under Proteintech Group brand and is not available to purchase from any other manufacturer.**

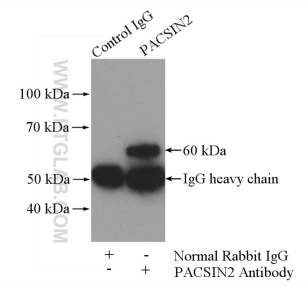
## Selected Validation Data



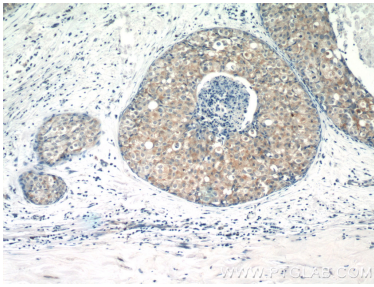
WB result of PACSIN2 antibody (10518-2-AP; 1:1000; incubated at room temperature for 1.5 hours) with sh-Control and sh-PACSIN2 transfected NIH/3T3 cells.



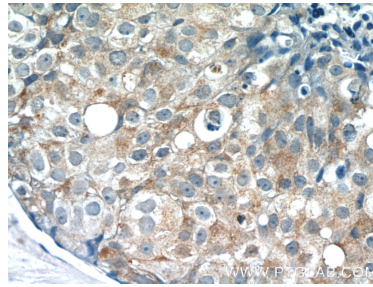
Various lysates were subjected to SDS PAGE followed by western blot with 10518-2-AP (PACSIN2 antibody) at dilution of 1:1000 incubated at room temperature for 1.5 hours.



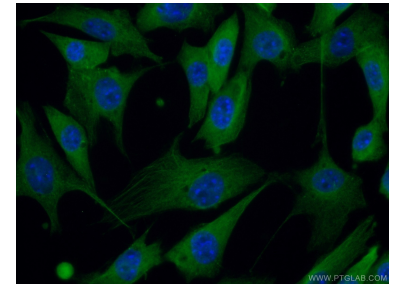
IP result of anti-PACSIN2 (IP:10518-2-AP, 4ug; Detection:10518-2-AP 1:500) with NIH/3T3 cells lysate 1200ug.



Immunohistochemical analysis of paraffin-embedded human breast cancer tissue slide using 10518-2-AP (PACSIN2 Antibody) at dilution of 1:400 (under 10x lens).



Immunohistochemical analysis of paraffin-embedded human breast cancer tissue slide using 10518-2-AP (PACSIN2 Antibody) at dilution of 1:400 (under 40x lens).



Immunofluorescent analysis of (10% Formaldehyde) fixed NIH/3T3 cells using 10518-2-AP (PACSIN2 antibody) at dilution of 1:50 and Alexa Fluor 488-conjugated AffiniPure Goat Anti-Rabbit IgG(H+L).