

Chromogranin A Polyclonal antibody

Catalog Number: 10529-1-AP

11 Publications

Basic Information

Catalog Number:

10529-1-AP

Size:

400 µg/ml

Source:

Rabbit

Isotype:

IgG

Immunogen Catalog Number:

AG0807

GenBank Accession Number:

BC006459

GeneID (NCBI):

1113

UNIPROT ID:

P10645

Full Name:

chromogranin A (parathyroid secretory protein 1)

Calculated MW:

51 kDa

Observed MW:

70 kDa

Purification Method:

Antigen affinity purification

Recommended Dilutions:

WB 1:500-1:2000

IHC 1:400-1:1600

IF 1:200-1:800

Applications

Tested Applications:

IF-P, IHC, WB, ELISA

Cited Applications:

IF, IHC, WB

Species Specificity:

human, mouse, rat

Cited Species:

human, rat, mouse

Note-IHC: suggested antigen retrieval with TE buffer pH 9.0; (*) Alternatively, antigen retrieval may be performed with citrate buffer pH 6.0

Positive Controls:

WB: PC-12 cells,

IHC: human pancreas tissue, human colon tissue, human lung cancer tissue

IF: mouse pancreas tissue,

Background Information

Chromogranin A is a member of the granin family of neuroendocrine secretory proteins. It is located in secretory vesicles of neurons and endocrine cells. Chromogranin A is the precursor to several functional peptides including vasostatin, pancreastatin, catestatin and parastatin. These peptides negatively modulate the neuroendocrine function of the releasing cell (autocrine) or nearby cells (paracrine). CgA is one of the most used tumor markers in NET's (neuroendocrine tumors), and elevated CgA concentrations have been demonstrated in serum or plasma of patients with different types of these tumors.

Notable Publications

Author	Pubmed ID	Journal	Application
Qiong Wang	36088396	Cell Biosci	WB
Azita Monazzam	32884006	Sci Rep	WB
Jinzhao Bai	36058152	Biomed Pharmacother	IF

Storage

Storage:

Store at -20°C. Stable for one year after shipment.

Storage Buffer:

PBS with 0.02% sodium azide and 50% glycerol pH 7.3.

Aliquoting is unnecessary for -20°C storage

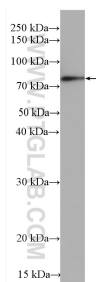
For technical support and original validation data for this product please contact:

T: 4006900926

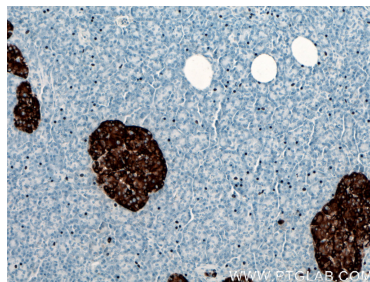
E: Proteintech-CN@ptglab.comW: ptgcn.com

This product is exclusively available under Proteintech Group brand and is not available to purchase from any other manufacturer.

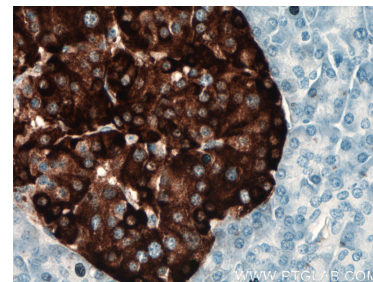
Selected Validation Data



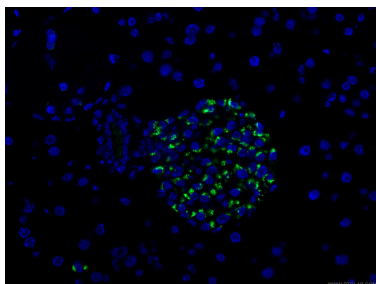
PC-12 cells were subjected to SDS PAGE followed by western blot with 10529-1-AP (Chromogranin A antibody) at dilution of 1:1000 incubated at room temperature for 1.5 hours.



Immunohistochemical analysis of paraffin-embedded human pancreas tissue slide using 10529-1-AP (Chromogranin A antibody) at dilution of 1:1600 (under 10x lens).



Immunohistochemical analysis of paraffin-embedded human pancreas tissue slide using 10529-1-AP (Chromogranin A antibody) at dilution of 1:1600 (under 40x lens).



Immunofluorescent analysis of (4% PFA) fixed mouse pancreas tissue using 10529-1-AP (Chromogranin A antibody), at dilution of 1:400 and CoraLite®488-Conjugated AffiniPure Goat Anti-Rabbit IgG(H+L).