

## EMILIN1 Polyclonal antibody

Catalog Number: 10643-1-AP

1 Publications

## Basic Information

<b>Catalog Number:</b> 10643-1-AP	<b>GenBank Accession Number:</b> BC007530	<b>Purification Method:</b> Antigen affinity purification
<b>Size:</b> 240 µg/ml	<b>GeneID (NCBI):</b> 11117	<b>Recommended Dilutions:</b> WB 1:500-1:2000 IHC 1:20-1:200 IF/ICC 1:50-1:500
<b>Source:</b> Rabbit	<b>UNIPROT ID:</b> Q9Y6C2	
<b>Isotype:</b> IgG	<b>Full Name:</b> elastin microfibril interfacier 1	
<b>Immunogen Catalog Number:</b> AG1016	<b>Calculated MW:</b> 107 kDa	
	<b>Observed MW:</b> 120 kDa	

## Applications

**Tested Applications:**  
WB, IHC, IF/ICC, ELISA

**Cited Applications:**  
WB

**Species Specificity:**  
human

**Cited Species:**  
human

**Note-IHC: suggested antigen retrieval with TE buffer pH 9.0; (\*) Alternatively, antigen retrieval may be performed with citrate buffer pH 6.0**

**Positive Controls:**

**WB :** human kidney tissue, human brain tissue, human placenta tissue

**IHC :** human ovary tumor tissue, human heart tissue, human kidney tissue, human ovary tissue, human placenta tissue, human skin tissue, human spleen tissue, human testis tissue

**IF/ICC :** HeLa cells,

## Background Information

EMILIN1, also named EMILIN, EMILIN-1, gp115 and EMI, may be responsible for anchoring smooth muscle cells to elastic fibers, and may be involved not only in the formation of the elastic fiber, but also in the processes that regulate vessel assembly. It has cell adhesive capacity. EMILIN1 is a negative regulator of the transforming growth factor-beta (TGF-beta) signaling, which is involved in blood pressure (BP) homeostasis (PMID:20186130). EMILIN1 may play a key role in hypertensive vascular remodeling. TGF β proteins are the main regulators of blood vessel development and maintenance, and EMILIN1 inhibits TGF β signaling by binding specifically to the proTGF β precursor and preventing its maturation by furin convertases in the extracellular space (PMID:19922630).

## Notable Publications

Author	Pubmed ID	Journal	Application
Genee Y Lee	24755469	Cancer Res	WB

## Storage

**Storage:**  
Store at -20°C. Stable for one year after shipment.

**Storage Buffer:**  
PBS with 0.02% sodium azide and 50% glycerol pH 7.3.

Aliquoting is unnecessary for -20°C storage

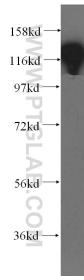
For technical support and original validation data for this product please contact:

T: 4006900926

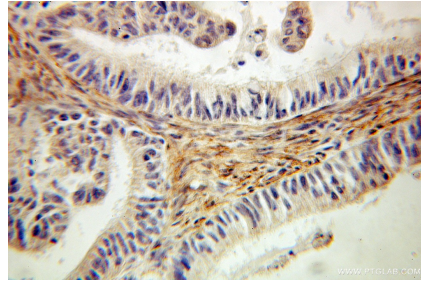
E: [Proteintech-CN@ptglab.com](mailto:Proteintech-CN@ptglab.com)W: [ptgcn.com](http://ptgcn.com)

**This product is exclusively available under Proteintech Group brand and is not available to purchase from any other manufacturer.**

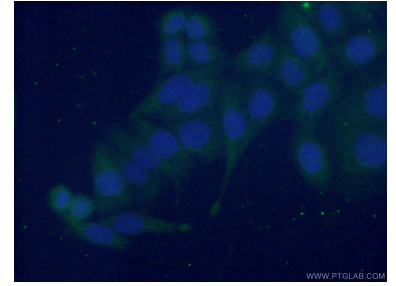
## Selected Validation Data



human kidney tissue were subjected to SDS PAGE followed by western blot with 10643-1-AP (EMILIN1 antibody) at dilution of 1:300 incubated at room temperature for 1.5 hours.



Immunohistochemical analysis of paraffin-embedded human ovary tumor using 10643-1-AP (EMILIN1 antibody) at dilution of 1:100 (under 10x lens).



Immunofluorescent analysis of (-20°C Ethanol) fixed HeLa cells using 10643-1-AP (EMILIN1 antibody) at dilution of 1:50 and Alexa Fluor 488-conjugated AffiniPure Goat Anti-Rabbit IgG(H+L).