

For Research Use Only

# LAMR1/RPSA Polyclonal antibody

Catalog Number: 10668-1-AP

1 Publications



## Basic Information

Catalog Number: 10668-1-AP	GenBank Accession Number: BC008867	Purification Method: Antigen affinity purification
Concentration: 400 ug/ml	GeneID (NCBI): 3921	Recommended Dilutions: IHC 1:50-1:500
Source: Rabbit	UNIPROT ID: P08865	
Isotype: IgG	Full Name: ribosomal protein SA	
Immunogen Catalog Number: AG1055	Calculated MW: 33 kDa	

## Applications

Tested Applications: IHC, ELISA	Positive Controls: IHC : human lung cancer tissue,
Cited Applications: IHC	
Species Specificity: human, mouse, rat	
Cited Species: mouse	

**Note-IHC: suggested antigen retrieval with TE buffer pH 9.0; (\*) Alternatively, antigen retrieval may be performed with citrate buffer pH 6.0**

## Background Information

The ribosomal protein SA (RPSA), previously named 67 kD laminin receptor(67LR), 37 kD laminin receptor precursor (37LRP) and p40 ribosome-associated protein, is a multifunctional protein, that plays a role in a number of pathological processes, such as cancer and prion diseases. It is overexpressed in various cancer cell lines, and the level of the laminin receptor transcript is higher in colon carcinoma tissue and lung cancer cell line than their normal counterparts. This antibody is a rabbit polyclonal antibody raised against a fusion protein of full length human RPSA. This antibody is specific to RPSA (LAMR1).

## Notable Publications

Author	Pubmed ID	Journal	Application
Mengmeng Liu	33217534	Microb Pathog	IHC

## Storage

**Storage:**  
Store at -20°C. Stable for one year after shipment.  
**Storage Buffer:**  
PBS with 0.02% sodium azide and 50% glycerol pH 7.3.  
Aliquoting is unnecessary for -20°C storage

For technical support and original validation data for this product please contact:

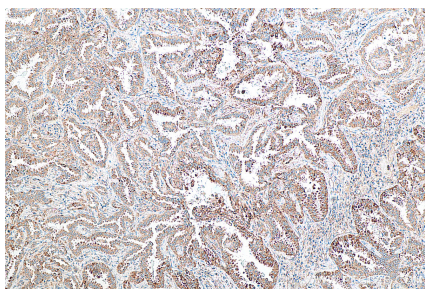
T: 4006900926

E: [Proteintech-CN@ptglab.com](mailto:Proteintech-CN@ptglab.com)

W: [ptgcn.com](http://ptgcn.com)

This product is exclusively available under Proteintech Group brand and is not available to purchase from any other manufacturer.

## Selected Validation Data



Immunohistochemical analysis of paraffin-embedded human lung cancer tissue slide using 10668-1-AP (LAMR1/RPSA antibody) at dilution of 1:200 (under 10 $\times$  lens). Heat mediated antigen retrieval with Tris-EDTA buffer (pH 9.0).