

For Research Use Only

# GMF Beta Polyclonal antibody

Catalog Number:10690-1-AP

Featured Product

11 Publications



## Basic Information

<b>Catalog Number:</b> 10690-1-AP	<b>GenBank Accession Number:</b> BC005359	<b>Purification Method:</b> Antigen affinity purification
<b>Size:</b> 500 µg/ml	<b>GeneID (NCBI):</b> 2764	<b>Recommended Dilutions:</b> WB 1:2000-1:10000 IHC 1:50-1:500 IF-P 1:50-1:500
<b>Source:</b> Rabbit	<b>UNIPROT ID:</b> P60983	
<b>Isotype:</b> IgG	<b>Full Name:</b> glia maturation factor, beta	
<b>Immunogen Catalog Number:</b> AG1104	<b>Calculated MW:</b> 17 kDa	
	<b>Observed MW:</b> 17 kDa	

## Applications

<b>Tested Applications:</b> WB, IHC, IF-P, FC (Intra), ELISA	<b>Positive Controls:</b> WB : mouse brain tissue, human heart tissue, human brain tissue, PC-12 cells, mouse heart tissue, rat brain tissue, SH-SY5Y cells, U-87 MG cells
<b>Cited Applications:</b> WB, IHC, IF	<b>IHC :</b> mouse brain tissue,
<b>Species Specificity:</b> human, mouse, rat	<b>IF-P:</b> mouse brain tissue,
<b>Cited Species:</b> human, mouse, zebrafish	
<b>Note-IHC: suggested antigen retrieval with TE buffer pH 9.0; (*) Alternatively, antigen retrieval may be performed with citrate buffer pH 6.0</b>	

## Background Information

GMFB, Glia maturation factor beta, is a nerve growth factor implicated in nervous system development. It was reported that GMF-beta promotes the phenotypic expression of glia and neurons and inhibits the proliferation of their respective tumors in culture cells. GMF-beta protein is specific to the brain where it is expressed in glial cells (mainly astrocytes) and insome neurons. Higher levels of GMFB were found in the central nervous system, except for the spinal cord, and in thymus and colon. GMFB was positive in the cytoplasm and nuclei of all cells in whole brain.

## Notable Publications

Author	Pubmed ID	Journal	Application
Miao Zhang	36175800	Int J Legal Med	WB
Wan Sun	34796110	Front Oncol	WB
Tong Zhu	35860559	Front Oncol	WB,IF

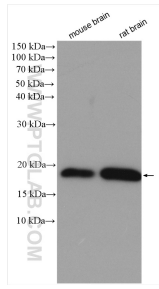
## Storage

**Storage:**  
Store at -20°C. Stable for one year after shipment.  
**Storage Buffer:**  
PBS with 0.02% sodium azide and 50% glycerol pH 7.3.  
Aliquoting is unnecessary for -20°C storage

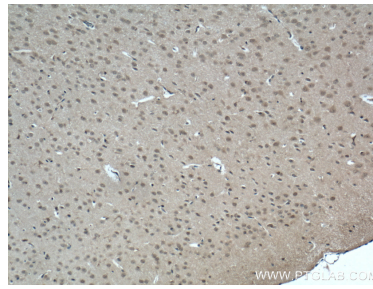
For technical support and original validation data for this product please contact:  
T: 4006900926 E: Proteintech-CN@ptglab.com W: ptgcn.com

This product is exclusively available under Proteintech Group brand and is not available to purchase from any other manufacturer.

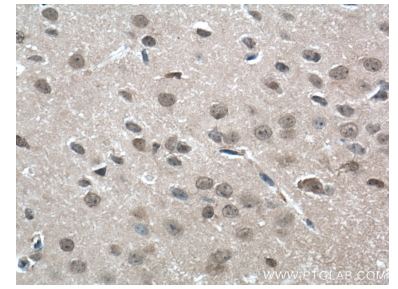
## Selected Validation Data



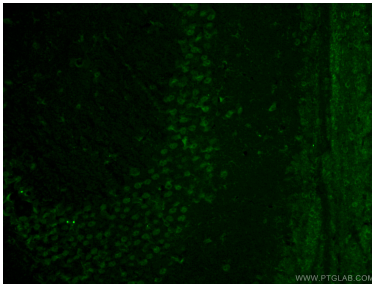
Various lysates were subjected to SDS PAGE followed by western blot with 10690-1-AP (GMF Beta antibody) at dilution of 1:8000 incubated at room temperature for 1.5 hours.



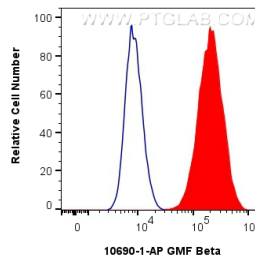
Immunohistochemical analysis of paraffin-embedded mouse brain tissue slide using 10690-1-AP (GMF-beta antibody) at dilution of 1:200 (under 10x lens. Heat mediated antigen retrieval with Tris-EDTA buffer (pH 9.0).



Immunohistochemical analysis of paraffin-embedded mouse brain tissue slide using 10690-1-AP (GMF-beta antibody) at dilution of 1:200 (under 40x lens. Heat mediated antigen retrieval with Tris-EDTA buffer (pH 9.0).



Immunofluorescent analysis of (4% PFA) fixed mouse brain tissue using 10690-1-AP (GMF-beta antibody) at dilution of 1:50 and Alexa Fluor 488-Conjugated AffiniPure Goat Anti-Rabbit IgG(H+L).



$1 \times 10^6$  U-87 MG cells were intracellularly stained with 0.8 ug Anti-Human GMF Beta (10690-1-AP) and CoraLite®488-Conjugated AffiniPure Goat Anti-Rabbit IgG(H+L) at dilution 1:1000 (red), or 0.8 ug Rabbit IgG control Rabbit PolyAb (30000-O-AP, Clone: ) (blue). Cells were fixed with 4% PFA and permeabilized with Flow Cytometry Perm Buffer (PF00011-C).