

For Research Use Only

# MPHOSPH6 Polyclonal antibody

Catalog Number: 10695-1-AP **1 Publications**



## Basic Information

**Catalog Number:**

10695-1-AP

**Size:**

550 µg/ml

**Source:**

Rabbit

**Isotype:**

IgG

**Immunogen Catalog Number:**

AG1080

**GenBank Accession Number:**

BC005242

**GeneID (NCBI):**

10200

**UNIPROT ID:**

Q99547

**Full Name:**

M-phase phosphoprotein 6

**Calculated MW:**

19 kDa

**Observed MW:**

19 kDa

**Purification Method:**

Antigen affinity purification

**Recommended Dilutions:**

WB 1:200-1:1000

IP 0.5-4.0 µg for 1.0-3.0 mg of total protein lysate

IHC 1:20-1:200

## Applications

**Tested Applications:**

IHC, IP, WB, ELISA

**Species Specificity:**

human

**Note-IHC: suggested antigen retrieval with TE buffer pH 9.0; (\*) Alternatively, antigen retrieval may be performed with citrate buffer pH 6.0**

**Positive Controls:**

WB : MCF7 cells, HeLa cells, MCF-7 cells, MDA-MB-453s cells

IP : HeLa cells,

IHC : human breast cancer tissue,

## Background Information

### Notable Publications

Author	Pubmed ID	Journal	Application
Rui-Rui Peng	32003502	Cell Prolif	

## Storage

**Storage:**

Store at -20°C. Stable for one year after shipment.

**Storage Buffer:**

PBS with 0.02% sodium azide and 50% glycerol pH 7.3.

Aliquoting is unnecessary for -20°C storage

For technical support and original validation data for this product please contact:

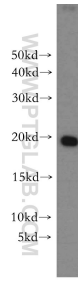
T: 4006900926

E: Proteintech-CN@ptglab.com

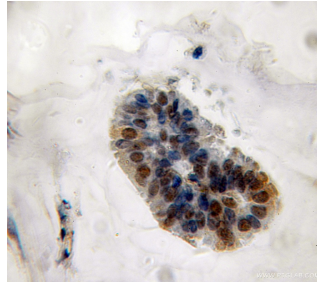
W: ptgcn.com

**This product is exclusively available under Proteintech Group brand and is not available to purchase from any other manufacturer.**

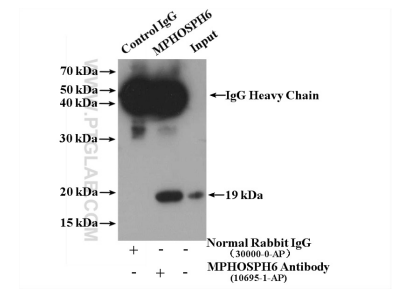
## Selected Validation Data



MCF-7 cells were subjected to SDS PAGE followed by western blot with 10695-1-AP (MPHOSPH6 antibody) at dilution of 1:300 incubated at room temperature for 1.5 hours.



Immunohistochemical analysis of paraffin-embedded human breast cancer using 10695-1-AP (MPHOSPH6 antibody) at dilution of 1:50 (under 10x lens).



IP result of anti-MPHOSPH6 (IP:10695-1-AP, 4ug; Detection:10695-1-AP 1:500) with HeLa cells lysate 3000 ug.