

For Research Use Only

C1D Polyclonal antibody

Catalog Number: 10711-1-AP **1 Publications**



Basic Information

Catalog Number: 10711-1-AP	GenBank Accession Number: BC005235	Purification Method: Antigen affinity purification
Size: 750 µg/ml	GeneID (NCBI): 10438	Recommended Dilutions: WB 1:200-1:1000
Source: Rabbit	UNIPROT ID: Q13901	IP 0.5-4.0 ug for 1.0-3.0 mg of total protein lysate
Isotype: IgG	Full Name: C1D nuclear receptor co-repressor	IHC 1:50-1:500
Immunogen Catalog Number: AG1121	Calculated MW: 16 kDa	

Applications

Tested Applications: IHC, IP, WB, ELISA	Positive Controls: WB : DU 145 cells, IP : DU 145 cells, IHC : human prostate cancer tissue,
Cited Applications: WB	
Species Specificity: human	
Cited Species: mouse	
Note-IHC: suggested antigen retrieval with TE buffer pH 9.0; (*) Alternatively, antigen retrieval may be performed with citrate buffer pH 6.0	

Background Information

Notable Publications

Author	Pubmed ID	Journal	Application
Di Lu	36417796	Redox Biol	WB

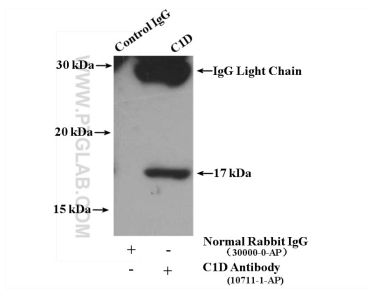
Storage

Storage:
Store at -20°C. Stable for one year after shipment.
Storage Buffer:
PBS with 0.02% sodium azide and 50% glycerol pH 7.3.
Aliquoting is unnecessary for -20°C storage

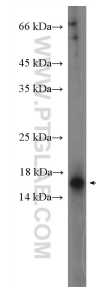
For technical support and original validation data for this product please contact:
T: 4006900926 E: Proteintech-CN@ptglab.com W: ptgcn.com

This product is exclusively available under Proteintech Group brand and is not available to purchase from any other manufacturer.

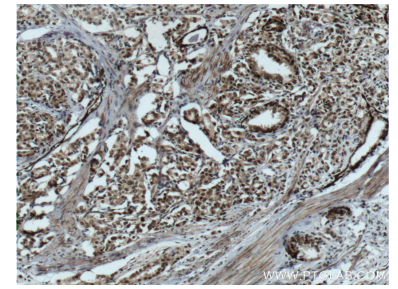
Selected Validation Data



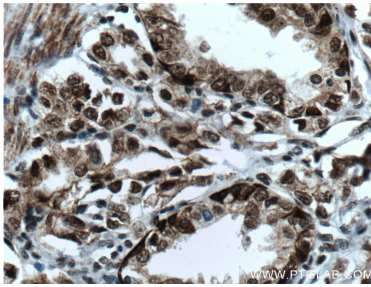
IP result of anti-C1D (IP:10711-1-AP, 4ug; Detection:10711-1-AP 1:300) with DU 145 cells lysate 1800 ug.



DU 145 cells were subjected to SDS PAGE followed by western blot with 10711-1-AP (C1D Antibody) at dilution of 1:300 incubated at room temperature for 1.5 hours.



Immunohistochemical analysis of paraffin-embedded human prostate cancer tissue slide using 10711-1-AP (C1D Antibody) at dilution of 1:200 (under 10x lens). Heat mediated antigen retrieval with Tris-EDTA buffer (pH 9.0).



Immunohistochemical analysis of paraffin-embedded human prostate cancer tissue slide using 10711-1-AP (C1D Antibody) at dilution of 1:200 (under 40x lens). Heat mediated antigen retrieval with Tris-EDTA buffer (pH 9.0).