

For Research Use Only

Cyclophilin A Polyclonal antibody, PBS Only

Catalog Number: 10720-1-PBS

Featured Product



Basic Information

Catalog Number:

10720-1-PBS

Size:

1 mg/ml

Source:

Rabbit

Isotype:

IgG

Immunogen Catalog Number:

AG1120

GenBank Accession Number:

BC005320

GeneID (NCBI):

5478

UNIPROT ID:

P62937

Full Name:

peptidylprolyl isomerase A
(cyclophilin A)

Calculated MW:

18 kDa

Observed MW:

18 kDa

Purification Method:

Antigen affinity purification

Applications

Tested Applications:

WB, IHC, IF/ICC, FC (Intra), ELISA

Species Specificity:

human, mouse, rat

Background Information

Cyclophilin A, also named as PPIA and Rotamase A, belongs to the cyclophilin-type PPIase family and PPIase A subfamily. PPIases accelerate the folding of proteins. It catalyzes the cis-trans isomerization of proline imidic peptide bonds in oligopeptides. PPIA forms a trimolecular complex with cyclophilin and calcineurins to inhibit calcineurin phosphatase activity. PPIA is incorporated into the virion of the type 1 human immunodeficiency virus (HIV-1) via a direct interaction with the capsid domain of the viral Gag polyprotein and is crucial for efficient viral replication.

Storage

Storage:

Store at -80°C.

The product is shipped with ice packs. Upon receipt, store it immediately at -80°C

Storage Buffer:

PBS Only

For technical support and original validation data for this product please contact:

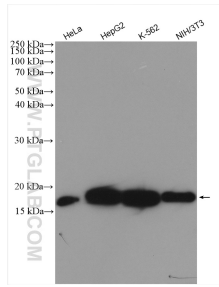
T: 4006900926

E: Proteintech-CN@ptglab.com

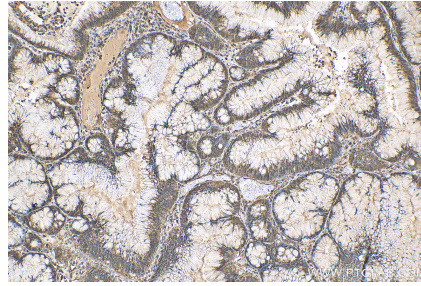
W: ptgcn.com

This product is exclusively available under Proteintech Group brand and is not available to purchase from any other manufacturer.

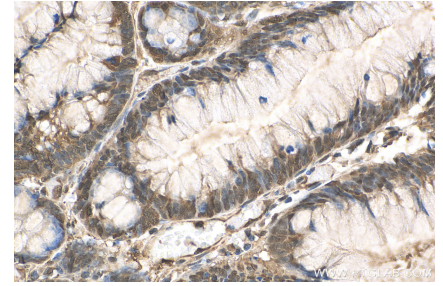
Selected Validation Data



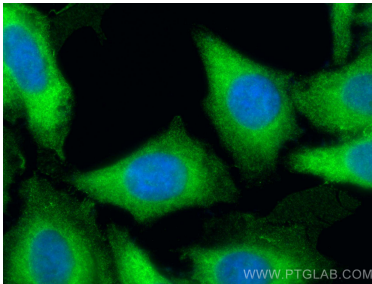
Various lysates were subjected to SDS PAGE followed by western blot with 10720-1-AP (Cyclophilin A antibody) at dilution of 1:6000 incubated at room temperature for 1.5 hours. This data was developed using the same antibody clone with 10720-1-PBS in a different storage buffer formulation.



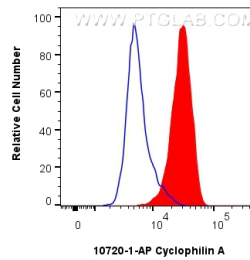
Immunohistochemical analysis of paraffin-embedded human colon cancer tissue slide using 10720-1-AP (Cyclophilin A antibody) at dilution of 1:200 (under 10x lens). Heat mediated antigen retrieval with Tris-EDTA buffer (pH 9.0). This data was developed using the same antibody clone with 10720-1-PBS in a different storage buffer formulation.



Immunohistochemical analysis of paraffin-embedded human colon cancer tissue slide using 10720-1-AP (Cyclophilin A antibody) at dilution of 1:200 (under 40x lens). Heat mediated antigen retrieval with Tris-EDTA buffer (pH 9.0). This data was developed using the same antibody clone with 10720-1-PBS in a different storage buffer formulation.



Immunofluorescent analysis of (-20°C Methanol) fixed HepG2 cells using Cyclophilin A antibody (10720-1-AP) at dilution of 1:200 and CoraLite®488-Conjugated AffiniPure Goat Anti-Rabbit IgG(H+L). This data was developed using the same antibody clone with 10720-1-PBS in a different storage buffer formulation.



1×10^6 HeLa cells were intracellularly stained with 0.25 ug Cyclophilin A Polyclonal antibody (10720-1-AP) and CoraLite®488-Conjugated Goat Anti-Rabbit IgG(H+L) (SA00013-2)(red), or 0.25 ug Rabbit IgG control Rabbit PolyAb (30000-0-AP) (blue). Cells were fixed with 4% PFA and permeabilized with Flow Cytometry Perm Buffer (PF00011-C). This data was developed using the same antibody clone with 10720-1-PBS in a different storage buffer formulation.