

For Research Use Only

# Cytokeratin 18 Polyclonal antibody, PBS Only

Catalog Number: 10830-1-PBS



## Basic Information

<b>Catalog Number:</b> 10830-1-PBS	<b>GenBank Accession Number:</b> BC000180	<b>Purification Method:</b> Antigen affinity purification
<b>Size:</b> 1 mg/ml	<b>GeneID (NCBI):</b> 3875	
<b>Source:</b> Rabbit	<b>UNIPROT ID:</b> P05783	
<b>Isotype:</b> IgG	<b>Full Name:</b> keratin 18	
<b>Immunogen Catalog Number:</b> AG1260	<b>Calculated MW:</b> 48 kDa	
	<b>Observed MW:</b> 48 kDa	

## Applications

**Tested Applications:**  
WB, IHC, IF/ICC, FC (Intra), IP, ELISA

**Species Specificity:**  
human, mouse

## Background Information

Keratins are a large family of proteins that form the intermediate filament cytoskeleton of epithelial cells, which are classified into two major sequence types. Type I keratins are a group of acidic intermediate filament proteins, including K9-K23, and the hair keratins Ha1-Ha8. Type II keratins are the basic or neutral counterparts to the acidic type I keratins, including K1-K8, and the hair keratins, Hb1-Hb6. KRT18, also named as CYK18, PIG46 and K18, is the most commonly found members of the intermediate filament gene family. KRT18 is a type I keratin which is found primarily in non squamous epithelia and is present in a majority of adenocarcinomas and ductal carcinomas but not in squamous cell carcinomas.

## Storage

**Storage:**  
Store at -80°C.  
**The product is shipped with ice packs. Upon receipt, store it immediately at -80°C**

**Storage Buffer:**  
PBS Only

For technical support and original validation data for this product please contact:

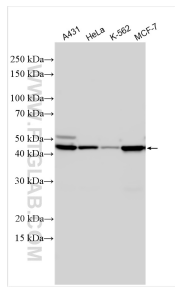
T: 4006900926

E: [Proteintech-CN@ptglab.com](mailto:Proteintech-CN@ptglab.com)

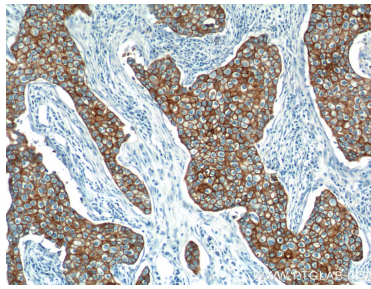
W: [ptgcn.com](http://ptgcn.com)

**This product is exclusively available under Proteintech Group brand and is not available to purchase from any other manufacturer.**

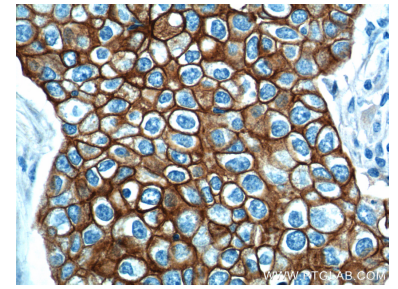
## Selected Validation Data



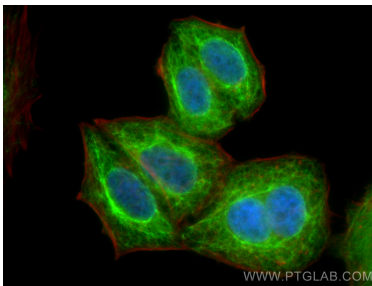
Various lysates were subjected to SDS PAGE followed by western blot with 10830-1-AP (Cytokeratin 18 antibody) at dilution of 1:60000 incubated at room temperature for 1.5 hours. This data was developed using the same antibody clone with 10830-1-PBS in a different storage buffer formulation.



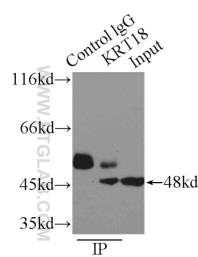
Immunohistochemical analysis of paraffin-embedded human breast cancer tissue slide using 10830-1-AP (Cytokeratin 18 antibody at dilution of 1:1000 (under 10x lens). This data was developed using the same antibody clone with 10830-1-PBS in a different storage buffer formulation.



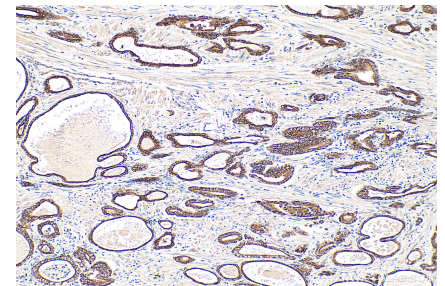
Immunohistochemical analysis of paraffin-embedded human breast cancer tissue slide using 10830-1-AP (Cytokeratin 18 antibody at dilution of 1:1000 (under 40x lens). This data was developed using the same antibody clone with 10830-1-PBS in a different storage buffer formulation.



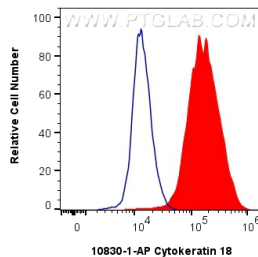
Immunofluorescent analysis of (4% PFA) fixed HepG2 cells using Cytokeratin 18 antibody (10830-1-AP) at dilution of 1:200 and CoraLite@488-Conjugated AffiniPure Goat Anti-Rabbit IgG(H+L), CL594-Phalloidin (red). This data was developed using the same antibody clone with 10830-1-PBS in a different storage buffer formulation.



IP result of anti-Cytokeratin 18 (IP:10830-1-AP, 3ug; Detection:10830-1-AP 1:2000) with A431 cells lysate 3300ug. This data was developed using the same antibody clone with 10830-1-PBS in a different storage buffer formulation.



Immunohistochemical analysis of paraffin-embedded human prostate hyperplasia tissue slide using 10830-1-AP (Cytokeratin 18 antibody) at dilution of 1:2000 (under 10x lens). Heat mediated antigen retrieval with Tris-EDTA buffer (pH 9.0). This data was developed using the same antibody clone with 10830-1-PBS in a different storage buffer formulation.



1x10<sup>6</sup> HeLa cells were intracellularly stained with 0.8 ug Cytokeratin 18 Polyclonal antibody (10830-1-AP) and CoraLite@488-Conjugated AffiniPure Goat Anti-Rabbit IgG(H+L) (SA00013-2)(red), or 0.8 ug Rabbit IgG control Rabbit PolyAb (30000-0-AP) (blue). Cells were fixed with 4% PFA and permeabilized with Flow Cytometry Perm Buffer (PF00011-C). This data was developed using the same antibody clone with 10830-1-PBS in a different storage buffer formulation.