

For Research Use Only

# JP45/JSRP1 Polyclonal antibody

Catalog Number: 10854-1-AP



## Basic Information

<b>Catalog Number:</b> 10854-1-AP	<b>GenBank Accession Number:</b> BC021201	<b>Purification Method:</b> Antigen affinity purification
<b>Size:</b> 600 µg/ml	<b>GeneID (NCBI):</b> 126306	<b>Recommended Dilutions:</b> WB 1:500-1:1000 IHC 1:50-1:500 IF/ICC 1:50-1:500
<b>Source:</b> Rabbit	<b>UNIPROT ID:</b> Q96MG2	
<b>Isotype:</b> IgG	<b>Full Name:</b> junctional sarcoplasmic reticulum protein 1	
<b>Immunogen Catalog Number:</b> AG1300	<b>Calculated MW:</b> 36 kDa, 45 kDa	
	<b>Observed MW:</b> 30 kDa	

## Applications

<b>Tested Applications:</b> WB, IHC, IF/ICC, ELISA	<b>Positive Controls:</b> WB : human skeletal muscle tissue, IHC : human pancreas cancer tissue, IF/ICC : HepG2 cells,
<b>Species Specificity:</b> human	
<b>Note-IHC: suggested antigen retrieval with TE buffer pH 9.0; (*) Alternatively, antigen retrieval may be performed with citrate buffer pH 6.0</b>	

## Background Information

JSRP1 (Junctional sarcoplasmic reticulum protein 1), also known as JP-45, is an integral protein of the junctional face membrane of the skeletal muscle sarcoplasmic reticulum (SR), and interacts with calsequestrin and the skeletal-muscle dihydropyridine receptor Cav1. JP-45 is an important protein for functional expression of voltage-dependent calcium channels. Involvement of JP-45 in the molecular mechanism underlying skeletal muscle excitation-contraction coupling has been reported. Although the predicated molecular weight of JP-45 is 36 kDa, it appears a 45-kDa band in western blotting in most cases.

## Storage

**Storage:**  
Store at -20°C. Stable for one year after shipment.  
**Storage Buffer:**  
PBS with 0.02% sodium azide and 50% glycerol pH 7.3.  
Aliquoting is unnecessary for -20°C storage

For technical support and original validation data for this product please contact:

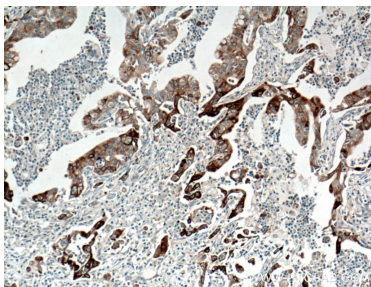
T: 4006900926

E: [Proteintech-CN@ptglab.com](mailto:Proteintech-CN@ptglab.com)

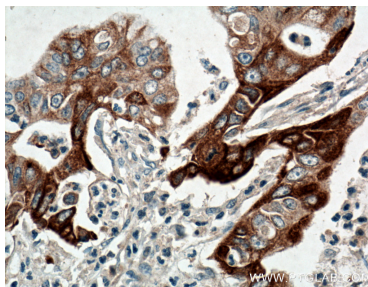
W: [ptgcn.com](http://ptgcn.com)

**This product is exclusively available under Proteintech Group brand and is not available to purchase from any other manufacturer.**

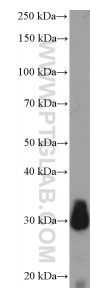
## Selected Validation Data



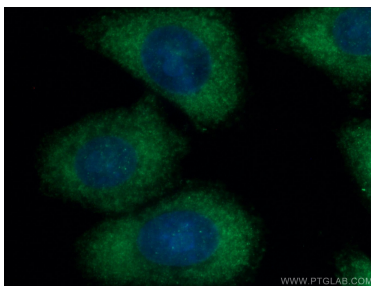
Immunohistochemical analysis of paraffin-embedded human pancreas cancer tissue slide using 10854-1-AP (JP45/JSRP1 antibody) at dilution of 1:200 (under 10x lens). Heat mediated antigen retrieval with Tris-EDTA buffer (pH 9.0).



Immunohistochemical analysis of paraffin-embedded human pancreas cancer tissue slide using 10854-1-AP (JP45/JSRP1 antibody) at dilution of 1:200 (under 40x lens). Heat mediated antigen retrieval with Tris-EDTA buffer (pH 9.0).



human skeletal muscle tissue were subjected to SDS PAGE followed by western blot with 10854-1-AP (JP45/JSRP1 antibody) at dilution of 1:600 incubated at room temperature for 1.5 hours.



Immunofluorescent analysis of (-20°C Ethanol) fixed HepG2 cells using 10854-1-AP (JP45/JSRP1 antibody) at dilution of 1:100 and Alexa Fluor 488-conjugated AffiniPure Goat Anti-Rabbit IgG(H+L).