

For Research Use Only

# KIRREL2 Polyclonal antibody

Catalog Number: 10890-1-AP **1 Publications**



## Basic Information

|                                            |                                                      |                                                              |
|--------------------------------------------|------------------------------------------------------|--------------------------------------------------------------|
| <b>Catalog Number:</b><br>10890-1-AP       | <b>GenBank Accession Number:</b><br>BC007312         | <b>Purification Method:</b><br>Antigen affinity purification |
| <b>Size:</b><br>500 µg/ml                  | <b>GeneID (NCBI):</b><br>84063                       | <b>Recommended Dilutions:</b><br>WB 1:200-1:1000             |
| <b>Source:</b><br>Rabbit                   | <b>UNIPROT ID:</b><br>Q6UWL6                         |                                                              |
| <b>Isotype:</b><br>IgG                     | <b>Full Name:</b><br>kin of IRRE like 2 (Drosophila) |                                                              |
| <b>Immunogen Catalog Number:</b><br>AG1036 | <b>Calculated MW:</b><br>75 kDa                      |                                                              |
|                                            | <b>Observed MW:</b><br>67 kDa, 90 kDa                |                                                              |

## Applications

|                                                  |                                                       |
|--------------------------------------------------|-------------------------------------------------------|
| <b>Tested Applications:</b><br>WB, ELISA         | <b>Positive Controls:</b><br>WB : mouse liver tissue, |
| <b>Cited Applications:</b><br>IF                 |                                                       |
| <b>Species Specificity:</b><br>human, mouse, rat |                                                       |
| <b>Cited Species:</b><br>human                   |                                                       |

## Background Information

### Notable Publications

| Author            | Pubmed ID | Journal        | Application |
|-------------------|-----------|----------------|-------------|
| Alexander Atamian | 38181749  | Cell Stem Cell | IF          |

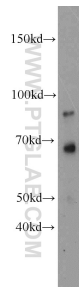
## Storage

**Storage:**  
Store at -20°C. Stable for one year after shipment.  
**Storage Buffer:**  
PBS with 0.02% sodium azide and 50% glycerol pH 7.3.  
Aliquoting is unnecessary for -20°C storage

For technical support and original validation data for this product please contact:  
T: 4006900926 E: Proteintech-CN@ptglab.com W: ptgcn.com

This product is exclusively available under Proteintech Group brand and is not available to purchase from any other manufacturer.

## Selected Validation Data



mouse liver tissue were subjected to SDS PAGE followed by western blot with 10890-1-AP (KIRREL2 antibody) at dilution of 1:300 incubated at room temperature for 1.5 hours.