

For Research Use Only

CSRP2 Polyclonal antibody

Catalog Number: 10892-2-AP

Featured Product

5 Publications



Basic Information

Catalog Number:

10892-2-AP

Size:

800 µg/ml

Source:

Rabbit

Isotype:

IgG

Immunogen Catalog Number:

AG1338

GenBank Accession Number:

BC000992

GeneID (NCBI):

1466

UNIPROT ID:

Q16527

Full Name:

cysteine and glycine-rich protein 2

Calculated MW:

21 kDa

Observed MW:

21 kDa

Purification Method:

Antigen affinity purification

Recommended Dilutions:

WB 1:500-1:2000

IP 0.5-4.0 µg for 1.0-3.0 mg of total protein lysate

Applications

Tested Applications:

IP, WB, ELISA

Cited Applications:

WB, IF, IHC

Species Specificity:

human, mouse, rat

Cited Species:

human, rat, mouse

Positive Controls:

WB : HepG2 cells, mouse kidney tissue, rat kidney tissue

IP : mouse liver tissue,

Background Information

Notable Publications

Author	Pubmed ID	Journal	Application
Xinghe Chen	36414118	Toxicol Appl Pharmacol	WB,IF
Esther Impertini	29142197	Sci Rep	WB
Lingtong Liu	38744347	Toxicol Appl Pharmacol	WB,IHC

Storage

Storage:

Store at -20°C. Stable for one year after shipment.

Storage Buffer:

PBS with 0.02% sodium azide and 50% glycerol pH 7.3.

Aliquoting is unnecessary for -20°C storage

For technical support and original validation data for this product please contact:

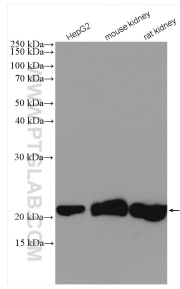
T: 4006900926

E: Proteintech-CN@ptglab.com

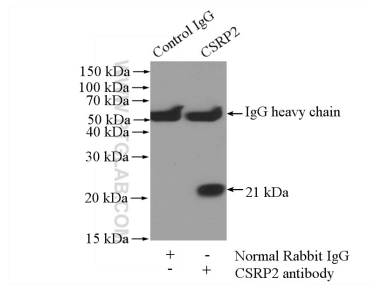
W: ptgcn.com

This product is exclusively available under Proteintech Group brand and is not available to purchase from any other manufacturer.

Selected Validation Data



Various lysates were subjected to SDS PAGE followed by western blot with 10892-2-AP (CSRP2 antibody) at dilution of 1:1000 incubated at room temperature for 1.5 hours.



IP result of anti-CSRP2 (IP:10892-2-AP, 4ug; Detection:10892-2-AP 1:1000) with mouse liver tissue lysate 4000ug.