

For Research Use Only

# MESDC2 Polyclonal antibody

Catalog Number: 10958-1-AP



## Basic Information

**Catalog Number:**

10958-1-AP

**Size:**

600 µg/ml

**Source:**

Rabbit

**Isotype:**

IgG

**Immunogen Catalog Number:**

AG1403

**GenBank Accession Number:**

BC009210

**GeneID (NCBI):**

23184

**UNIPROT ID:**

Q14696

**Full Name:**

mesoderm development candidate 2

**Calculated MW:**

26 kDa

**Observed MW:**

26-28 kDa

**Purification Method:**

Antigen affinity purification

**Recommended Dilutions:**

WB 1:500-1:1000

IHC 1:500-1:2000

## Applications

**Tested Applications:**

IHC, WB, ELISA

**Species Specificity:**

human, mouse

**Note-IHC: suggested antigen retrieval with TE buffer pH 9.0; (\*) Alternatively, antigen retrieval may be performed with citrate buffer pH 6.0**

**Positive Controls:**

WB : HEK-293 cells, HeLa cells, NIH/3T3 cells

IHC : human placenta tissue, human stomach tissue

## Background Information

### Storage

**Storage:**

Store at -20°C. Stable for one year after shipment.

**Storage Buffer:**

PBS with 0.02% sodium azide and 50% glycerol pH 7.3.

Aliquoting is unnecessary for -20°C storage

For technical support and original validation data for this product please contact:

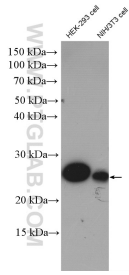
T: 4006900926

E: [Proteintech-CN@ptglab.com](mailto:Proteintech-CN@ptglab.com)

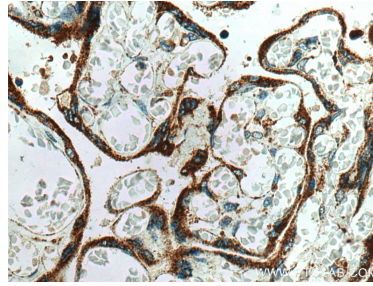
W: [ptgcn.com](http://ptgcn.com)

**This product is exclusively available under Proteintech Group brand and is not available to purchase from any other manufacturer.**

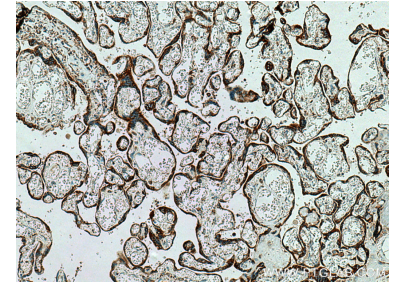
## Selected Validation Data



Various lysates were subjected to SDS PAGE followed by western blot with 10958-1-AP (MESDC2 antibody) at dilution of 1:800 incubated at 4 degree celsius over night.



Immunohistochemical analysis of paraffin-embedded human placenta tissue slide using 10958-1-AP (MESDC2 antibody) at dilution of 1:1000 (under 40x lens). Heat mediated antigen retrieval with Tris-EDTA buffer (pH 9.0).



Immunohistochemical analysis of paraffin-embedded human placenta tissue slide using 10958-1-AP (MESDC2 antibody) at dilution of 1:1000 (under 10x lens). Heat mediated antigen retrieval with Tris-EDTA buffer (pH 9.0).