

For Research Use Only

MAB21L2 Polyclonal antibody

Catalog Number: 10971-1-AP **1 Publications**



Basic Information

Catalog Number: 10971-1-AP	GenBank Accession Number: BC009983	Purification Method: Antigen affinity purification
Size: 247 ug/ml	GeneID (NCBI): 10586	Recommended Dilutions: WB 1:200-1:1000 IHC 1:50-1:500
Source: Rabbit	UNIPROT ID: Q9Y586	
Isotype: IgG	Full Name: mab-21-like 2 (C. elegans)	
Immunogen Catalog Number: AG1423	Calculated MW: 41 kDa	
	Observed MW: 41 kDa	

Applications

Tested Applications: WB, IHC, ELISA	Positive Controls: WB : mouse brain tissue, IHC : Human Colon cancer tissue,
Cited Applications: WB	
Species Specificity: human, mouse, rat	
Cited Species: human	
Note-IHC: suggested antigen retrieval with TE buffer pH 9.0; (*) Alternatively, antigen retrieval may be performed with citrate buffer pH 6.0	

Background Information

Mab-21 gene has been identified as a critical component required for sensory organ identity establishment in *Caenorhabditis elegans*. Mab21l1 and Mab21l2 paralogs have widespread and dynamic expression patterns during vertebrate development. Depletion of Mab21l1 and Mab21l2 messages in mouse embryo arrests axial turning, and impairs notochord and neural tube differentiation. Human MAB21L2 gene encodes mab-21-like 2 protein belonging to the mab-21 family. The Mab21l2-deficient mice have defects in eye and body wall formation, indicating that Mab21l2 plays crucial roles in retina and in ventral body wall formation. MAB21L2 plays a crucial role in both heart and liver development during mouse embryogenesis. This antibody is supposed to recognize both MAB21L2 and its homolog MAB21L1.

Notable Publications

Author	Pubmed ID	Journal	Application
Nicklas Pihlstrøm	33808059	Cancers (Basel)	WB

Storage

Storage:
Store at -20°C. Stable for one year after shipment.
Storage Buffer:
PBS with 0.02% sodium azide and 50% glycerol pH 7.3.
Aliquoting is unnecessary for -20°C storage

For technical support and original validation data for this product please contact:

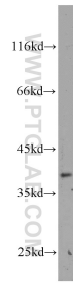
T: 4006900926

E: Proteintech-CN@ptglab.com

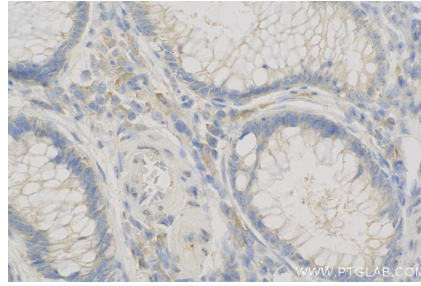
W: ptgcn.com

This product is exclusively available under Proteintech Group brand and is not available to purchase from any other manufacturer.

Selected Validation Data



mouse brain tissue were subjected to SDS PAGE followed by western blot with 10971-1-AP (MAB21L2 antibody) at dilution of 1:200 incubated at room temperature for 1.5 hours.



Immunohistochemical analysis of paraffin-embedded Human Colon cancer tissue slide using 10971-1-AP (MAB21L2 antibody) at dilution of 1:100 (under 40x lens). Heat mediated antigen retrieval with Tris-EDTA buffer (pH 9.0).