

For Research Use Only

# MIPEP Polyclonal antibody

Catalog Number: 11002-1-AP **2 Publications**



## Basic Information

<b>Catalog Number:</b> 11002-1-AP	<b>GenBank Accession Number:</b> BC009934	<b>Purification Method:</b> Antigen affinity purification
<b>Size:</b> 750 µg/ml	<b>GeneID (NCBI):</b> 4285	<b>Recommended Dilutions:</b> WB 1:500-1:2000 IHC 1:20-1:200
<b>Source:</b> Rabbit	<b>UNIPROT ID:</b> Q99797	
<b>Isotype:</b> IgG	<b>Full Name:</b> mitochondrial intermediate peptidase	
<b>Immunogen Catalog Number:</b> AG1451	<b>Calculated MW:</b> 81 kDa	
	<b>Observed MW:</b> 70-80 kDa	

## Applications

<b>Tested Applications:</b> WB, IHC, ELISA	<b>Positive Controls:</b> WB : HepG2 cells, MCF-7 cells
<b>Cited Applications:</b> WB, IHC	<b>IHC :</b> human prostate cancer tissue,
<b>Species Specificity:</b> human	
<b>Cited Species:</b> human	

**Note-IHC: suggested antigen retrieval with TE buffer pH 9.0; (\*) Alternatively, antigen retrieval may be performed with citrate buffer pH 6.0**

## Background Information

MIPEP(Mitochondrial intermediate peptidase) is also named as MIP and belongs to the peptidase M3 family. It performs the final step in processing a specific class of nuclear-encoded proteins targeted to the mitochondrial matrix or inner membrane. The enzyme is a monomer of 75 kDa with a transit peptide and about 20% of the final MIP preparation consists of equimolar amounts of two peptides of 47 kDa and 28 kDa, which are apparently the products of a single cleavage of the 75 kDa protein. MIP is an independent endopeptidase acting on mitochondrial intermediate proteins as substrates.(PMID:1322290).

## Notable Publications

Author	Pubmed ID	Journal	Application
Qing Yu	39004717	Clin Proteomics	WB,IHC
Marcondes Marcelo F MF	19900404	Biochem Biophys Res Commun	WB

## Storage

**Storage:**  
Store at -20°C. Stable for one year after shipment.  
**Storage Buffer:**  
PBS with 0.02% sodium azide and 50% glycerol pH 7.3.  
Aliquoting is unnecessary for -20°C storage

For technical support and original validation data for this product please contact:

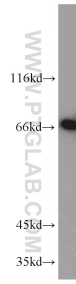
T: 4006900926

E: Proteintech-CN@ptglab.com

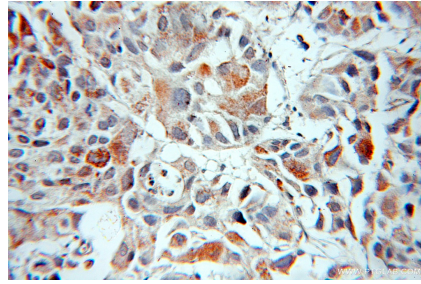
W: ptgcn.com

**This product is exclusively available under Proteintech Group brand and is not available to purchase from any other manufacturer.**

## Selected Validation Data



HepG2 cells were subjected to SDS PAGE followed by western blot with 11002-1-AP (MIPEP antibody) at dilution of 1:1000 incubated at room temperature for 1.5 hours.



Immunohistochemical analysis of paraffin-embedded human prostate cancer using 11002-1-AP (MIPEP antibody) at dilution of 1:50 (under 10x lens).