

For Research Use Only

# GABARAPL1 Polyclonal antibody

Catalog Number: 11010-1-AP

Featured Product

58 Publications



## Basic Information

### Catalog Number:

11010-1-AP

### Size:

500 µg/ml

### Source:

Rabbit

### Isotype:

IgG

### Immunogen Catalog Number:

AG1473

### GenBank Accession Number:

BC009309

### GeneID (NCBI):

23710

### UNIPROT ID:

Q9HOR8

### Full Name:

GABA(A) receptor-associated protein like 1

### Calculated MW:

14 kDa

### Observed MW:

16 kDa

### Purification Method:

Antigen affinity purification

### Recommended Dilutions:

WB 1:500-1:2000

IP 0.5-4.0 µg for 1.0-3.0 mg of total protein lysate

IHC 1:50-1:500

IF 1:50-1:500

## Applications

### Tested Applications:

FC, IF/ICC, IHC, IP, WB, ELISA

### Cited Applications:

IF, IHC, IP, WB

### Species Specificity:

human, mouse, rat

### Cited Species:

human, rat, mouse, monkey, prawn

**Note-IHC: suggested antigen retrieval with TE buffer pH 9.0; (\*) Alternatively, antigen retrieval may be performed with citrate buffer pH 6.0**

### Positive Controls:

**WB** : mouse brain tissue, HepG2 cells, human heart tissue, mouse liver tissue, rat brain tissue

**IP** : mouse liver tissue,

**IHC** : mouse brain tissue, human ovary tumor tissue, human liver tissue

**IF** : Chloroquine treated HeLa cells, Chloroquine treated HepG2 cells

## Background Information

GABARAPL1 (GABARAP-like protein 1), also named ATG8, GEC1, APG8L, ATG8L, and APG8-LIKE, is a member of the GABARP (GABAA receptor-associated protein) family. GABARAPL1 was initially identified as an estrogen-regulated gene and the protein acts in receptor and vesicle transport. It's also involved in the process of autophagy like GABARAP and GABARAPL2 and may be considered as an autophagic marker. It is expressed at very high levels in the brain, heart, peripheral blood leukocytes, liver, kidney, placenta, and skeletal muscle and at very low levels in the thymus and small intestine. The antibody is specific to GABARAPL1, and it doesn't recognize the recombinant GABARAP and GABARAPL2.

## Notable Publications

Author	Pubmed ID	Journal	Application
Marine Jacquet	34681055	Biology (Basel)	WB,IHC
Noam D Rudnick	28904095	Proc Natl Acad Sci U S A	IHC,IF
Leïla Fonderflick	36139357	Cells	WB

## Storage

### Storage:

Store at -20°C. Stable for one year after shipment.

### Storage Buffer:

PBS with 0.02% sodium azide and 50% glycerol pH 7.3.

Aliquoting is unnecessary for -20°C storage

For technical support and original validation data for this product please contact:

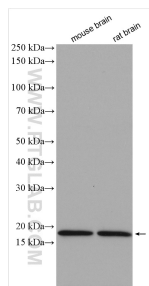
T: 4006900926

E: [Proteintech-CN@ptglab.com](mailto:Proteintech-CN@ptglab.com)

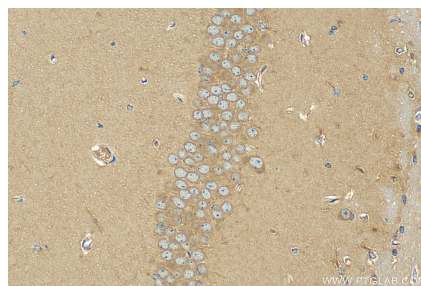
W: [ptgcn.com](http://ptgcn.com)

**This product is exclusively available under Proteintech Group brand and is not available to purchase from any other manufacturer.**

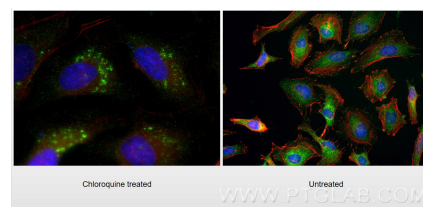
## Selected Validation Data



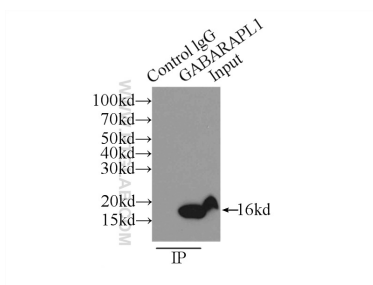
Various lysates were subjected to SDS PAGE followed by western blot with 11010-1-AP (GABARAPL1-Specific antibody) at dilution of 1:1000 incubated at room temperature for 1.5 hours.



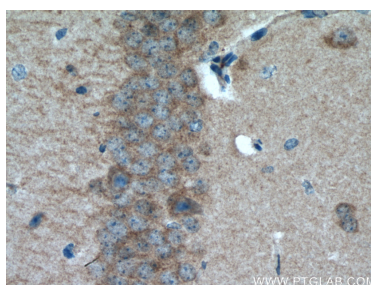
Immunohistochemical analysis of paraffin-embedded mouse brain tissue slide using 11010-1-AP (GABARAPL1 antibody) at dilution of 1:200 (under 40x lens). Heat mediated antigen retrieval with Tris-EDTA buffer (pH 9.0).



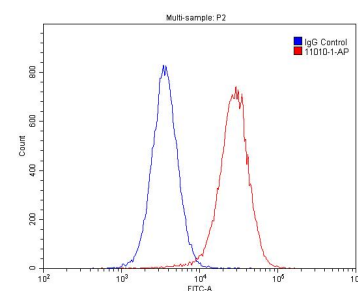
Immunofluorescent analysis of (-20°C Ethanol) fixed Chloroquine treated HeLa cells using GABARAPL1-Specific antibody (11010-1-AP) at dilution of 1:200 and CoraLite®488-Conjugated AffiniPure Goat Anti-Rabbit IgG(H+L), CL594-Phalloidin (red).



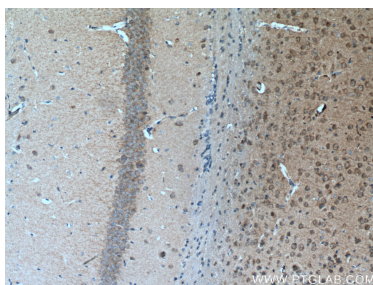
IP result of anti-GABARAPL1 (IP:11010-1-AP, 3ug; Detection:11010-1-AP 1:500) with mouse liver tissue lysate 5000ug.



Immunohistochemical analysis of paraffin-embedded mouse brain tissue slide using 11010-1-AP (GABARAPL1-Specific antibody) at dilution of 1:200 (under 40x lens). Heat mediated antigen retrieval with Tris-EDTA buffer (pH 9.0).



1X10<sup>6</sup> HepG2 cells were stained with 0.2ug GABARAPL1-Specific antibody (11010-1-AP, red) and control antibody (blue). Cells were fixed with 4% PFA and permeabilized with 0.1% Triton X-100. Alexa Fluor 488-conjugated AffiniPure Goat Anti-Rabbit IgG(H+L) with dilution 1:1500.



Immunohistochemical analysis of paraffin-embedded mouse brain tissue slide using 11010-1-AP (GABARAPL1-Specific antibody) at dilution of 1:200 (under 10x lens). Heat mediated antigen retrieval with Tris-EDTA buffer (pH 9.0).