

For Research Use Only

human IgM Polyclonal antibody, PBS Only

Catalog Number: 11016-1-PBS



Basic Information

Catalog Number: 11016-1-PBS	GenBank Accession Number: BC009851	Purification Method: Antigen affinity purification
Size: 1 mg/ml	GeneID (NCBI): 3507	
Source: Rabbit	Full Name: immunoglobulin heavy constant mu	
Isotype: IgG	Calculated MW: 69 kDa	
Immunogen Catalog Number: AG1459	Observed MW: 75 kDa	

Applications

Tested Applications:
WB, IHC, Indirect ELISA

Species Specificity:
human

Background Information

This antibody detects the heavy chain of human IgM (~75 kDa).

Storage

Storage:
Store at -80°C.
The product is shipped with ice packs. Upon receipt, store it immediately at -80°C

Storage Buffer:
PBS Only

For technical support and original validation data for this product please contact:

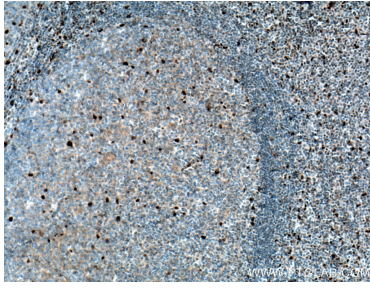
T: 4006900926

E: Proteintech-CN@ptglab.com

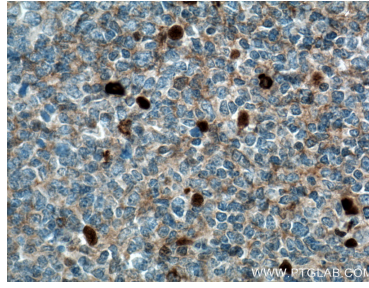
W: ptgcn.com

This product is exclusively available under Proteintech Group brand and is not available to purchase from any other manufacturer.

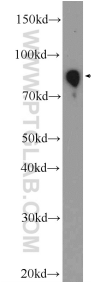
Selected Validation Data



Immunohistochemical analysis of paraffin-embedded human tonsillitis tissue slide using 11016-1-AP (IGHM antibody) at dilution of 1:200 (under 10x lens. Heat mediated antigen retrieval with Tris-EDTA buffer (pH 9.0). This data was developed using the same antibody clone with 11016-1-PBS in a different storage buffer formulation.



Immunohistochemical analysis of paraffin-embedded human tonsillitis tissue slide using 11016-1-AP (IGHM antibody) at dilution of 1:200 (under 40x lens. Heat mediated antigen retrieval with Tris-EDTA buffer (pH 9.0). This data was developed using the same antibody clone with 11016-1-PBS in a different storage buffer formulation.



human plasma were subjected to SDS PAGE followed by western blot with 11016-1-AP (IGHM Antibody) at dilution of 1:1000 incubated at room temperature for 1.5 hours. This data was developed using the same antibody clone with 11016-1-PBS in a different storage buffer formulation.