

For Research Use Only

# TIMM17B Polyclonal antibody

Catalog Number: 11062-1-AP **8 Publications**



## Basic Information

**Catalog Number:**

11062-1-AP

**Size:**

700 µg/ml

**Source:**

Rabbit

**Isotype:**

IgG

**Immunogen Catalog Number:**

AG1504

**GenBank Accession Number:**

BC010142

**GeneID (NCBI):**

10245

**UNIPROT ID:**

O60830

**Full Name:**

translocase of inner mitochondrial membrane 17 homolog B (yeast)

**Calculated MW:**

18 kDa

**Observed MW:**

17-20 kDa

**Purification Method:**

Antigen affinity purification

**Recommended Dilutions:**

WB 1:500-1:1000

IP 0.5-4.0 µg for 1.0-3.0 mg of total protein lysate

IHC 1:20-1:200

## Applications

**Tested Applications:**

IHC, IP, WB, ELISA

**Cited Applications:**

WB

**Species Specificity:**

human, mouse, rat

**Cited Species:**

human, mouse

**Note-IHC: suggested antigen retrieval with TE buffer pH 9.0; (\*) Alternatively, antigen retrieval may be performed with citrate buffer pH 6.0**

**Positive Controls:**

WB: mouse heart tissue, mouse liver tissue

IP: mouse heart tissue,

IHC: human colon cancer tissue,

## Background Information

### Notable Publications

Author	Pubmed ID	Journal	Application
Zhilin Hu	31204281	Cell Metab	WB
Lidia Wrobel	27265872	Sci Rep	
Yilin Kang	28712726	Mol Cell	WB

## Storage

**Storage:**

Store at -20°C. Stable for one year after shipment.

**Storage Buffer:**

PBS with 0.02% sodium azide and 50% glycerol pH 7.3.

Aliquoting is unnecessary for -20°C storage

For technical support and original validation data for this product please contact:

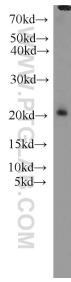
T: 4006900926

E: Proteintech-CN@ptglab.com

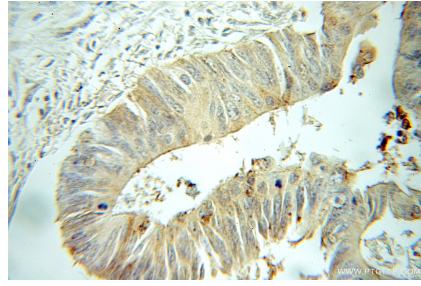
W: ptgcn.com

**This product is exclusively available under Proteintech Group brand and is not available to purchase from any other manufacturer.**

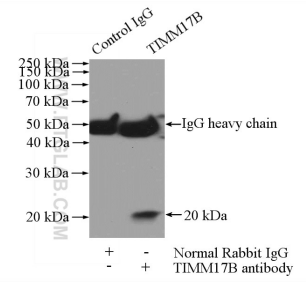
## Selected Validation Data



mouse heart tissue were subjected to SDS PAGE followed by western blot with 11062-1-AP (TIMM17B antibody) at dilution of 1:600 incubated at room temperature for 1.5 hours.



Immunohistochemical analysis of paraffin-embedded human colon cancer using 11062-1-AP (TIMM17B antibody) at dilution of 1:50 (under 10x lens).



IP result of anti-TIMM17B (IP:11062-1-AP, 3ug; Detection:11062-1-AP 1:500) with mouse heart tissue lysate 4000ug.