

HOMER2 Polyclonal antibody

Catalog Number: 11143-1-AP

1 Publications

Basic Information

Catalog Number:

11143-1-AP

Size:

1300 µg/ml

Source:

Rabbit

Isotype:

IgG

Immunogen Catalog Number:

AG1606

GenBank Accession Number:

BC012109

GeneID (NCBI):

9455

UNIPROT ID:

Q9NSB8

Full Name:

homer homolog 2 (Drosophila)

Calculated MW:

41 kDa

Observed MW:

41 kDa

Purification Method:

Antigen affinity purification

Recommended Dilutions:

WB 1:2000-1:12000

IHC 1:50-1:500

IF 1:200-1:800

Applications

Tested Applications:

IF, IHC, WB, ELISA

Cited Applications:

WB

Species Specificity:

human, mouse, rat

Cited Species:

mouse

Note-IHC: suggested antigen retrieval with TE buffer pH 9.0; (*) Alternatively, antigen retrieval may be performed with citrate buffer pH 6.0

Positive Controls:

WB: HEK-293 cells, HEK-293T cells, MCF-7 cells, rat kidney tissue, LnCaP cells

IHC: mouse cerebellum tissue,

IF: U2OS cells,

Background Information

HOMER2 (Homer Scaffold Protein 2), a postsynaptic density scaffolding protein, is essential for normal hearing in humans and mice (PMID: 25816005). HOMER2 negatively regulates T cell activation by inhibiting the calcineurin-NFAT pathway (Uniprot). HOMER2 belongs to the homer family of dendritic proteins which are immediate early gene products who bind to group 1 metabotropic glutamate receptors (mGluRs), proteins associated to triggering intracellular calcium release. Additionally, HOMER2 connects mGluRs to the inositol triphosphate receptors (IP3R).

Notable Publications

Author	Pubmed ID	Journal	Application
Yue Qin	35388181	Mol Psychiatry	WB

Storage

Storage:

Store at -20°C. Stable for one year after shipment.

Storage Buffer:

PBS with 0.02% sodium azide and 50% glycerol pH 7.3.

Aliquoting is unnecessary for -20°C storage

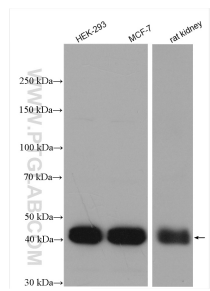
For technical support and original validation data for this product please contact:

T: 4006900926

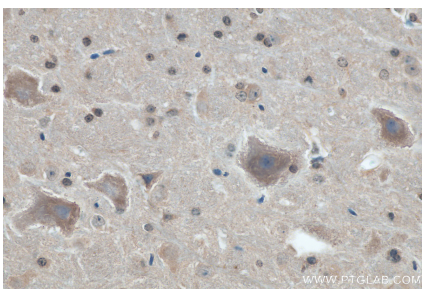
E: Proteintech-CN@ptglab.comW: ptgcn.com

This product is exclusively available under Proteintech Group brand and is not available to purchase from any other manufacturer.

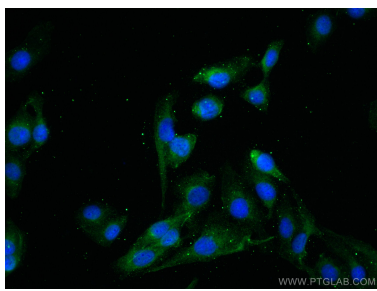
Selected Validation Data



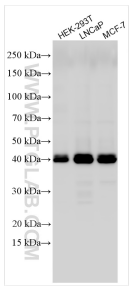
Various lysates were subjected to SDS PAGE followed by western blot with 11143-1-AP (HOMER2 antibody) at dilution of 1:6000 incubated at room temperature for 1.5 hours.



Immunohistochemical analysis of paraffin-embedded mouse cerebellum tissue slide using 11143-1-AP (HOMER2 antibody) at dilution of 1:200 (under 40x lens). Heat mediated antigen retrieval with Tris-EDTA buffer (pH 9.0).



Immunofluorescent analysis of (-20°C Methanol) fixed U2OS cells using HOMER2 antibody (11143-1-AP) at dilution of 1:400 and CoraLite®488-Conjugated AffiniPure Goat Anti-Rabbit IgG(H+L).



Various lysates were subjected to SDS PAGE followed by western blot with 11143-1-AP (HOMER2 antibody) at dilution of 1:10000 incubated at room temperature for 1.5 hours.