

For Research Use Only

Hephaestin Polyclonal antibody

Catalog Number: 11148-1-AP **2 Publications**



Basic Information

Catalog Number: 11148-1-AP	GenBank Accession Number: BC011561	Purification Method: Antigen affinity purification
Size: 300 µg/ml	GeneID (NCBI): 9843	Recommended Dilutions: IHC 1:20-1:200
Source: Rabbit	UNIPROT ID: Q9BQS7	
Isotype: IgG	Full Name: hephaestin	
Immunogen Catalog Number: AG1604	Calculated MW: 130 kDa	

Applications

Tested Applications: IHC, ELISA	Positive Controls: IHC : human pancreas cancer tissue,
Cited Applications: WB	
Species Specificity: human	
Cited Species: human, rat	
Note-IHC: suggested antigen retrieval with TE buffer pH 9.0; (*) Alternatively, antigen retrieval may be performed with citrate buffer pH 6.0	

Background Information

Hephaestin, also named as KIAA0698, belongs to the multicopper oxidase family. It is provided as ferroxidase of cellular iron export. HEPH is implicated in iron homeostasis and may mediate iron efflux associated to ferroportin 1. HEPE is active in placenta but may not play a key role in placental iron transport.

Notable Publications

Author	Pubmed ID	Journal	Application
Xin Li	36117765	Chin Herb Med	WB
Li Yan-Qin YQ	22170436	Cell Biochem Funct	WB

Storage

Storage:
Store at -20°C. Stable for one year after shipment.
Storage Buffer:
PBS with 0.02% sodium azide and 50% glycerol pH 7.3.
Aliquoting is unnecessary for -20°C storage

For technical support and original validation data for this product please contact:

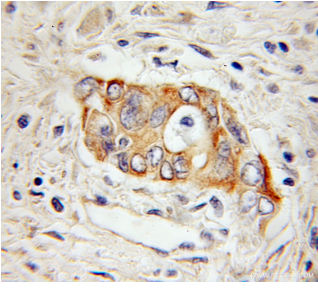
T: 4006900926

E: Proteintech-CN@ptglab.com

W: ptgcn.com

This product is exclusively available under Proteintech Group brand and is not available to purchase from any other manufacturer.

Selected Validation Data



Immunohistochemical analysis of paraffin-embedded human pancreas cancer using 11148-1-AP (Hephaestin antibody) at dilution of 1:50 (under 10x lens).