

For Research Use Only

NTHL1 Polyclonal antibody

Catalog Number: 11154-1-AP **4 Publications**



Basic Information

Catalog Number: 11154-1-AP	GenBank Accession Number: BC003014	Purification Method: Antigen affinity purification
Size: 800 µg/ml	GeneID (NCBI): 4913	Recommended Dilutions: WB 1:1000-1:4000
Source: Rabbit	UNIPROT ID: P78549	
Isotype: IgG	Full Name: nth endonuclease III-like 1 (E. coli)	
Immunogen Catalog Number: AG1631	Calculated MW: 34 aa, 3 kDa	
	Observed MW: 34 kDa	

Applications

Tested Applications: WB, ELISA	Positive Controls: WB : HEK-293 cells, human brain tissue, HeLa cells, K-562 cells, rat brain tissue
Cited Applications: WB, IP	
Species Specificity: human, mouse, rat	
Cited Species: human, rat	

Background Information

NTHL1, also named as Endonuclease III-like protein 1 or OCTS3, is a 312 amino acid protein, which belongs to the Nth/MutY family. NTHL1 localizes in the nucleus and is widely expressed with highest levels in heart and lowest levels in lung and liver. NTHL1 has both an apurinic and/or apyrimidinic endonuclease activity and a DNA N-glycosylase activity and incises damaged DNA at cytosines, thymines and guanines. NTHL1 acts on a damaged strand, 5' from the damaged site and is required for the repair of both oxidative DNA damage and spontaneous mutagenic lesions.

Notable Publications

Author	Pubmed ID	Journal	Application
Elise Vickridge	36186110	NAR Cancer	WB,IP
Kremer Ted MTM	15450125	Respir Res	WB
Catherine E Aiken	30888848	FASEB J	WB

Storage

Storage:
Store at -20°C. Stable for one year after shipment.
Storage Buffer:
PBS with 0.02% sodium azide and 50% glycerol pH 7.3.
Aliquoting is unnecessary for -20°C storage

For technical support and original validation data for this product please contact:

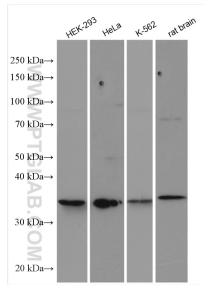
T: 4006900926

E: Proteintech-CN@ptglab.com

W: ptgcn.com

This product is exclusively available under Proteintech Group brand and is not available to purchase from any other manufacturer.

Selected Validation Data



Various lysates were subjected to SDS PAGE followed by western blot with 11154-1-AP (NTHL1 antibody) at dilution of 1:2000 incubated at room temperature for 1.5 hours.