

For Research Use Only

BIN3 Polyclonal antibody

Catalog Number: 11215-1-AP **1 Publications**



Basic Information

Catalog Number:

11215-1-AP

Size:

133 µg/ml

Source:

Rabbit

Isotype:

IgG

Immunogen Catalog Number:

AG1713

GenBank Accession Number:

BC009824

GeneID (NCBI):

55909

UNIPROT ID:

Q9NQY0

Full Name:

bridging integrator 3

Calculated MW:

30 kDa

Observed MW:

30 kDa

Purification Method:

Antigen affinity purification

Recommended Dilutions:

WB 1:500-1:1000

IP 0.5-4.0 µg for 1.0-3.0 mg of total protein lysate

IHC 1:20-1:200

Applications

Tested Applications:

IHC, IP, WB, ELISA

Cited Applications:

WB

Species Specificity:

human, mouse, rat

Cited Species:

mouse

Note-IHC: suggested antigen retrieval with TE buffer pH 9.0; (*) Alternatively, antigen retrieval may be performed with citrate buffer pH 6.0

Positive Controls:

WB : K-562 cells, HeLa cells

IP : K-562 cells,

IHC : human prostate cancer tissue,

Background Information

Bridging integrator 3 (BIN3) is a conserved BAR (Bin/amphiphysin/ Rvs) domain adaptor protein (PMID: 11274158). BAR domain proteins, sharing an N-terminal BAR domain, have been implicated in diverse cellular processes, including endocytosis, vesicle fusion, cell polarity, actin organization, signal transduction, transcription repression, and tumor suppression (PMID: 16524918). BIN3 is involved in cytokinesis and septation where it has a role in the localization of F-actin (PMID: 11274158).

Notable Publications

Author	Pubmed ID	Journal	Application
Hoffmann Andrea A	22270329	Mol Med	WB

Storage

Storage:

Store at -20°C. Stable for one year after shipment.

Storage Buffer:

PBS with 0.02% sodium azide and 50% glycerol pH 7.3.

Aliquoting is unnecessary for -20°C storage

For technical support and original validation data for this product please contact:

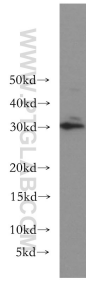
T: 4006900926

E: Proteintech-CN@ptglab.com

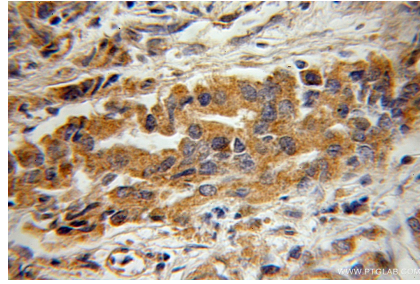
W: ptgcn.com

This product is exclusively available under Proteintech Group brand and is not available to purchase from any other manufacturer.

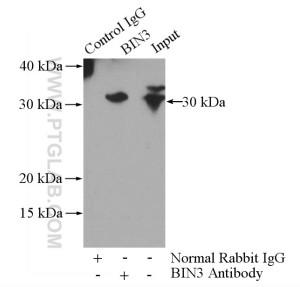
Selected Validation Data



K-562 cells were subjected to SDS PAGE followed by western blot with 11215-1-AP (BIN3 antibody) at dilution of 1:300 incubated at room temperature for 1.5 hours.



Immunohistochemical analysis of paraffin-embedded human prostate cancer using 11215-1-AP (BIN3 antibody) at dilution of 1:50 (under 10x lens).



IP result of anti-BIN3 (IP:11215-1-AP, 4ug; Detection:11215-1-AP 1:300) with K-562 cells lysate 3200ug.